

KANSAS CORPORATION COMMISSION
OIL & GAS CONSERVATION DIVISION

Form must be Typed
Form must be signed

TEMPORARY ABANDONMENT WELL APPLICATION

All blanks must be complete

OPERATOR: License#
Name:
Address 1:
Address 2:
City: State: Zip:
Contact Person:
Phone:
Contact Person Email:
Field Contact Person:
Field Contact Person Phone:

API No. 15-
Spot Description:
Sec. Twp. S. R.
feet from N / S Line of Section
feet from E / W Line of Section
GPS Location: Lat: , Long:
Datum: NAD27 NAD83 WGS84
County: Elevation: GL KB
Lease Name: Well #:
Well Type: (check one) Oil Gas OG WSW Other:
SWD Permit #: ENHR Permit #:
Gas Storage Permit #:
Spud Date: Date Shut-In:

Table with 7 columns: Conductor, Surface, Production, Intermediate, Liner, Tubing. Rows include Size, Setting Depth, Amount of Cement, Top of Cement, Bottom of Cement.

Casing Fluid Level from Surface: How Determined? Date:
Casing Squeeze(s): to w / sacks of cement, to w / sacks of cement. Date:
Do you have a valid Oil & Gas Lease? Yes No
Depth and Type: Junk in Hole at Tools in Hole at Casing Leaks: Yes No Depth of casing leak(s):
Type Completion: ALT. I ALT. II Depth of: DV Tool: w / sacks of cement Port Collar: w / sack of cement
Packer Type: Size: Inch Set at: Feet
Total Depth: Plug Back Depth: Plug Back Method:

Geological Date:

Table with 4 columns: Formation Name, Formation Top, Formation Base, Completion Information. Rows 1 and 2.

UNDER PENALTY OF PERJURY I HEREBY ATTEST THAT THE INFORMATION CONTAINED HEREIN IS TRUE AND CORRECT TO THE BEST OF MY KNOWLEDGE

Submitted Electronically

Do NOT Write in This Space - KCC USE ONLY
Date Tested: Results: Date Plugged: Date Repaired: Date Put Back in Service:
Review Completed by: Comments:
TA Approved: Yes Denied Date:

Mail to the Appropriate KCC Conservation Office:

Table with 2 columns: Office Address, Phone. Rows for KCC District Office #1, #2, #3, #4.

ECHOMETER COMPAN

ECHOMETER MODEL M V3.1.3
 SERIAL NO: 7596
 ECHOMETER COMPANY
 5001 DITTO LANE
 WICHITA FALLS, TEXAS 76302
 PHONE 940 - 767 - 4334
 FAX 940 - 723 - 7507
 E-MAIL INFO@ECHOMETER.COM

POWER ON
 SELF TEST
 PASS
 REF 1.250 V
 BATTERY
 12.0 VOLTS

TURNO
 ON
 CHART
 DRIVE
 TO
 TEST
 WELL

NY PHONE-940-767-4334

GLM

WELL *Harbath #1*
 CASING PRESSURE
 ΔP
 ΔT
 PRODUCTION RATE

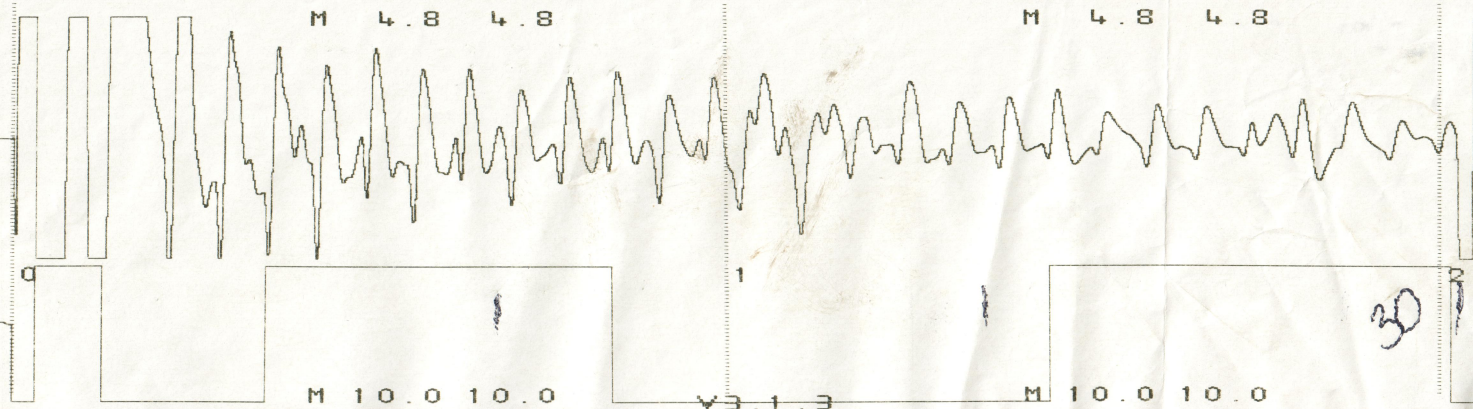
JOINTS TO LIQUID *30*
 DISTANCE TO LIQUID
 PBHP
 SBHP
 PROD RATE EFF, %
 MAX PRODUCTION

02/28/2018 12:09:24
 QUIET WELL
 LOWER COLLARS M: 4.8
 P-P 0.022 mV
 LIQUID LEVEL M: 10.0
 P-P 0.005 mV

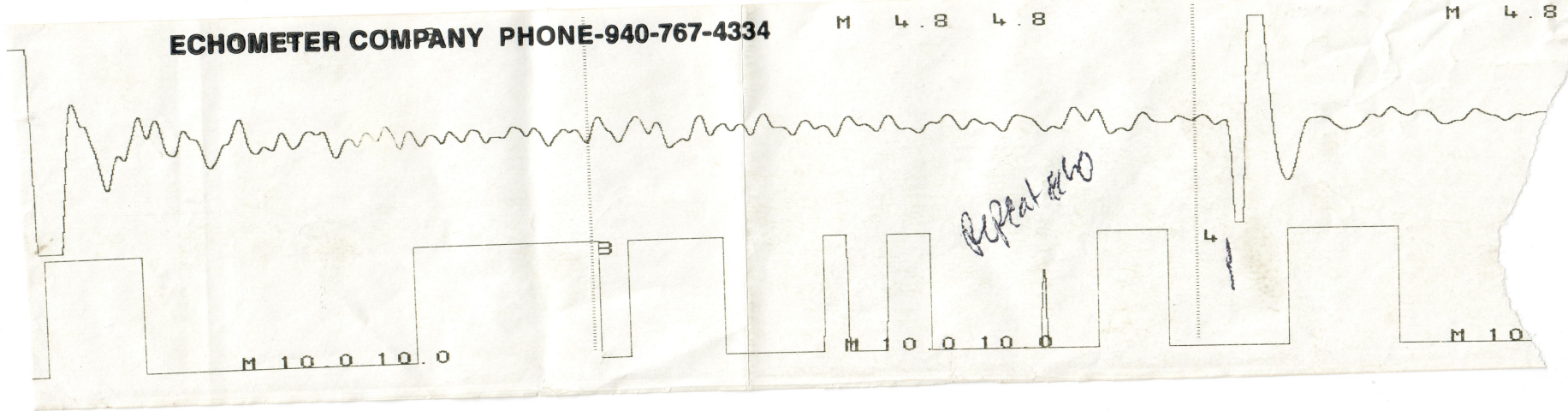
COMPANY PHONE-940-767-4334

LC

E



ECHOMETER COMPANY PHONE-940-767-4334



STATE OF KANSAS

CORPORATION COMMISSION
CONSERVATION DIVISION
DISTRICT OFFICE No. 2
3450 N. ROCK ROAD
BUILDING 600, SUITE 601
WICHITA, KS 67226



PHONE: 316-337-7400
FAX: 316-630-4005
<http://kcc.ks.gov/>

GOVERNOR JEFF COLYER, M.D.

SHARI FEIST ALBRECHT, CHAIR | JAY SCOTT EMLER, COMMISSIONER | PAT APPLE, COMMISSIONER

March 19, 2018

Caitlynn Loman
GLM Energy, Inc.
5732 N.W. 132ND ST
OKLAHOMA CITY, OK 73142

Re: Temporary Abandonment
API 15-191-20272-00-00
HARBAUGH E H 1-V
SW/4 Sec.10-34S-01E
Sumner County, Kansas

Dear Caitlynn Loman:

"Your temporary abandonment (TA) application for the well listed above has been approved. In accordance with K.A.R. 82-3-111 the TA status of this well will expire 03/19/2019.

- * If you return this well to service or plug it, please notify the District Office.
- * If you sell this well you are required to file a Transfer of Operator form, T-1.
- * If the well will remain temporarily abandoned, you must submit a new TA application, CP-111, before 03/19/2019.

You may contact me at the number above if you have questions.

Very truly yours,

Steve VanGieson"