

KANSAS CORPORATION COMMISSION
OIL & GAS CONSERVATION DIVISION

TEMPORARY ABANDONMENT WELL APPLICATION

OPERATOR: License# _____
 Name: _____
 Address 1: _____
 Address 2: _____
 City: _____ State: _____ Zip: _____ + _____
 Contact Person: _____
 Phone:(_____) _____
 Contact Person Email: _____
 Field Contact Person: _____
 Field Contact Person Phone: (_____) _____

API No. 15- _____
 Spot Description: _____
 _____ - _____ - _____ - _____ Sec. _____ Twp. _____ S. R. _____ E W
 _____ feet from N / S Line of Section
 _____ feet from E / W Line of Section
 GPS Location: Lat: _____, Long: _____
(e.g. xx.xxxxx) (e.g. -xxx.xxxxx)
 Datum: NAD27 NAD83 WGS84
 County: _____ Elevation: _____ GL KB
 Lease Name: _____ Well #: _____
 Well Type: (check one) Oil Gas OG WSW Other: _____
 SWD Permit #: _____ ENHR Permit #: _____
 Gas Storage Permit #: _____
 Spud Date: _____ Date Shut-In: _____

	Conductor	Surface	Production	Intermediate	Liner	Tubing
Size						
Setting Depth						
Amount of Cement						
Top of Cement						
Bottom of Cement						

Casing Fluid Level from Surface: _____ How Determined? _____ Date: _____
 Casing Squeeze(s): _____ to _____ w / _____ sacks of cement, _____ to _____ w / _____ sacks of cement. Date: _____
(top) (bottom) (top) (bottom)
 Do you have a valid Oil & Gas Lease? Yes No
 Depth and Type: Junk in Hole at _____ Tools in Hole at _____ Casing Leaks: Yes No Depth of casing leak(s): _____
(depth) (depth)
 Type Completion: ALT. I ALT. II Depth of: DV Tool: _____ w / _____ sacks of cement Port Collar: _____ w / _____ sack of cement
(depth) (depth)
 Packer Type: _____ Size: _____ Inch Set at: _____ Feet
 Total Depth: _____ Plug Back Depth: _____ Plug Back Method: _____

Geological Data:

Formation Name	Formation Top	Formation Base	Completion Information
1. _____	At: _____	to _____ Feet	Perforation Interval _____ to _____ Feet or Open Hole Interval _____ to _____ Feet
2. _____	At: _____	to _____ Feet	Perforation Interval _____ to _____ Feet or Open Hole Interval _____ to _____ Feet

UNDER PENALTY OF PERJURY I HEREBY ATTEST THAT THE INFORMATION CONTAINED HEREIN IS TRUE AND CORRECT TO THE BEST OF MY KNOWLEDGE

Submitted Electronically

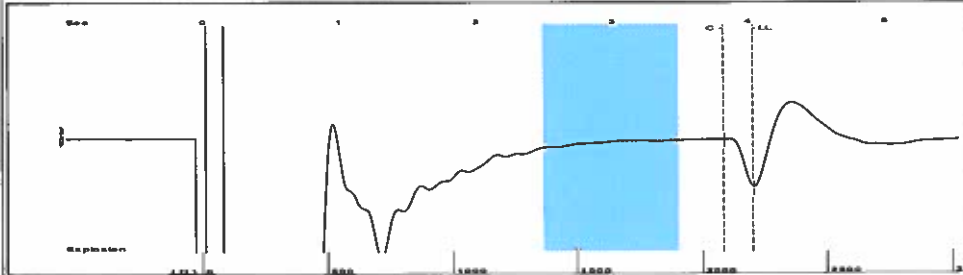
Do NOT Write in This Space - KCC USE ONLY	Date Tested: _____	Results: _____	Date Plugged: _____	Date Repaired: _____	Date Put Back in Service: _____
	Review Completed by: _____ Comments: _____				
TA Approved: <input type="checkbox"/> Yes <input type="checkbox"/> Denied Date: _____					

Mail to the Appropriate KCC Conservation Office:

	KCC District Office #1 - 210 E. Frontview, Suite A, Dodge City, KS 67801	Phone 620.682.7933
	KCC District Office #2 - 3450 N. Rock Road, Building 600, Suite 601, Wichita, KS 67226	Phone 316.337.7400
	KCC District Office #3 - 137 E. 21st St., Chanute, KS 66720	Phone 620.902.6450
	KCC District Office #4 - 2301 E. 13th Street, Hays, KS 67601-2651	Phone 785.261.6250

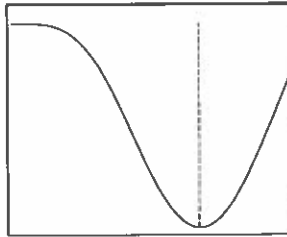
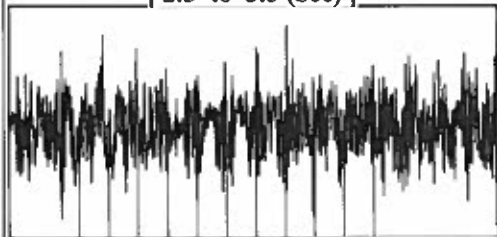
SHOT @ 300PSI

Group: TA'D WELLS Well: FERGUSON 1-17 (acquired on: 03/26/18 12:14:32)



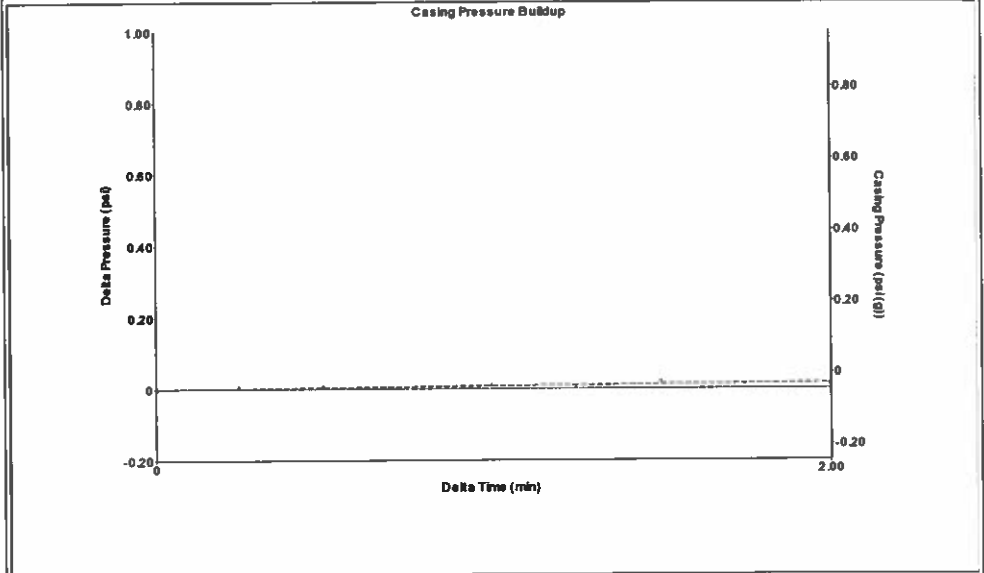
Filter Type High Pass Automatic Collar Count Yes Time 4.041 sec
 Manual Acoustic Velocity 1047.93 ft/s Manual JTS/sec 16.5289 Joints 69.5052 Jts
 Depth 2203.31 ft

[2.5 to 3.5 (Sec)]



Analysis Method: Automatic

Group: TA'D WELLS Well: FERGUSON 1-17 (acquired on: 03/26/18 12:14:32)



Change in Pressure 0.02 psi PT9424
 Change in Time 2.00 min Range 0 - ? psi

Group: TA'D WELLS Well: FERGUSON 1-17 (acquired on: 03/26/18 12:14:32)

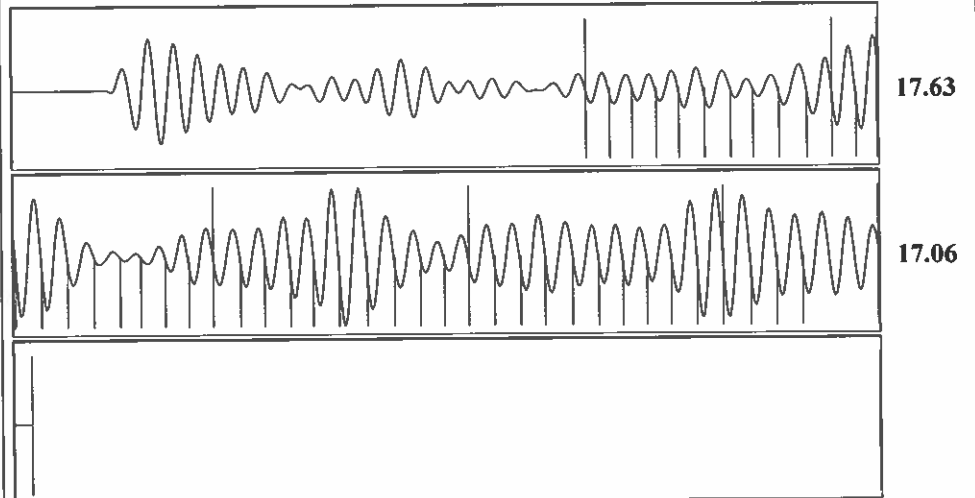
Production		Potential	Casing Pressure
Oil	-*-	-*- BBL/D	-0.0 psi (g)
Water	-*-	-*- BBL/D	Casing Pressure Buildup
Gas	-*-	-*- Mscf/D	0.0 psi
			2.00 min
IPR Method	Vogel	Gas/Liquid Interface Pressure	
PBHP/SBHP	-*-	1.0 psi (g)	
Production Efficiency	0.0		
Oil	40 deg API	Liquid Level Depth	
Water	1.05 Sp.Gr.H2O	2203.31 ft	
Gas	0.89 Sp.Gr.AIR	Pump Intake Depth	
		3445.00 ft	
Acoustic Velocity	1090.48 ft/s	Formation Depth	
		3445.00 ft	



Producing	
Annular Gas Flow	0 Mscf/D
% Liquid	100 %
Pump Intake	420.6 psi (g)
Producing BHP	420.6 psi (g)
Static BHP	-*- psi (g)

Formation Submergence
 Total Gaseous Liquid Column HT (TVD) 1242 ft
 Equivalent Gas Free Liquid HT (TVD) 1242 ft
 Acoustic Test

Group: TA'D WELLS Well: FERGUSON 1-17 (acquired on: 03/26/18 12:14:32)



Acoustic Velocity	1090.48 ft/s	Joints counted	43
Joints Per Second	17.2 jts/sec	Joints to liquid level	69.5052
Depth to liquid level	2203.31 ft	Filter Width	14.5289
Automatic Collar Count	Yes	Time to 1st Collar	1.324
			18.5289
			3.824

STATE OF KANSAS

CORPORATION COMMISSION
CONSERVATION DIVISION
DISTRICT OFFICE No. 1
210 E. FRONTVIEW, SUITE A
DODGE CITY, KS 67801



PHONE: 620-682-7933
<http://kcc.ks.gov/>

GOVERNOR JEFF COLYER, M.D.

SHARI FEIST ALBRECHT, CHAIR | JAY SCOTT EMLER, COMMISSIONER | PAT APPLE, COMMISSIONER

March 27, 2018

Katherine McClurkan
Merit Energy Company, LLC
13727 Noel Road, Suite 1200
Dallas, TX 75240

Re: Temporary Abandonment
API 15-129-20788-00-03
Ferguson 1-17
SE/4 Sec.17-32S-43W
Morton County, Kansas

Dear Katherine McClurkan:

"Your temporary abandonment (TA) application for the well listed above has been approved. In accordance with K.A.R. 82-3-111 the TA status of this well will expire 03/27/2019.

- * If you return this well to service or plug it, please notify the District Office.
- * If you sell this well you are required to file a Transfer of Operator form, T-1.
- * If the well will remain temporarily abandoned, you must submit a new TA application, CP-111, before 03/27/2019.

You may contact me at the number above if you have questions.

Very truly yours,

Michael Maier"