

KANSAS CORPORATION COMMISSION
OIL & GAS CONSERVATION DIVISION

TEMPORARY ABANDONMENT WELL APPLICATION

OPERATOR: License#
Name:
Address 1:
Address 2:
City: State: Zip:
Contact Person:
Phone:
Contact Person Email:
Field Contact Person:
Field Contact Person Phone:

API No. 15-
Spot Description:
Sec. Twp. S. R.
GPS Location: Lat: Long:
Datum: NAD27 NAD83 WGS84
County: Elevation:
Lease Name: Well #:
Well Type: Oil Gas OG WSW Other:
SWD Permit #: ENHR Permit #:
Gas Storage Permit #:
Spud Date: Date Shut-In:

Table with 7 columns: Conductor, Surface, Production, Intermediate, Liner, Tubing. Rows include Size, Setting Depth, Amount of Cement, Top of Cement, Bottom of Cement.

Casing Fluid Level from Surface: How Determined? Date:
Casing Squeeze(s): to w / sacks of cement, to w / sacks of cement. Date:
Do you have a valid Oil & Gas Lease? Yes No
Depth and Type: Junk in Hole at Tools in Hole at Casing Leaks: Yes No Depth of casing leak(s):
Type Completion: ALT. I ALT. II Depth of: DV Tool: w / sacks of cement Port Collar: w / sack of cement
Packer Type: Size: Inch Set at: Feet
Total Depth: Plug Back Depth: Plug Back Method:

Geological Data:

Table with 4 columns: Formation Name, Formation Top, Formation Base, Completion Information. Rows 1 and 2.

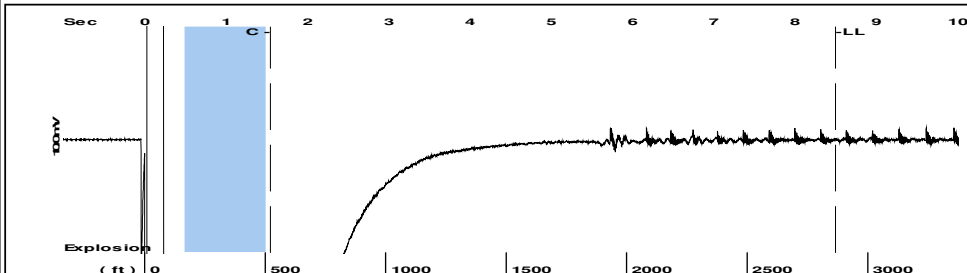
UNDER PENALTY OF PERJURY I HEREBY ATTEST THAT THE INFORMATION CONTAINED HEREIN IS TRUE AND CORRECT TO THE BEST OF MY KNOWLEDGE

Submitted Electronically

Do NOT Write in This Space - KCC USE ONLY
Date Tested: Results: Date Plugged: Date Repaired: Date Put Back in Service:
Review Completed by: Comments:
TA Approved: Yes Denied Date:

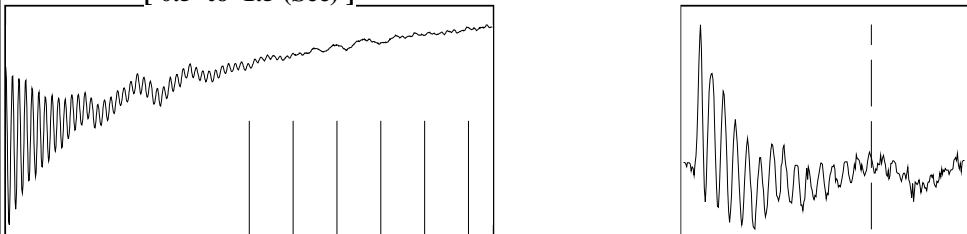
Mail to the Appropriate KCC Conservation Office:

Table with 2 columns: Office Address, Phone. Rows for District Office #1, #2, #3, #4.

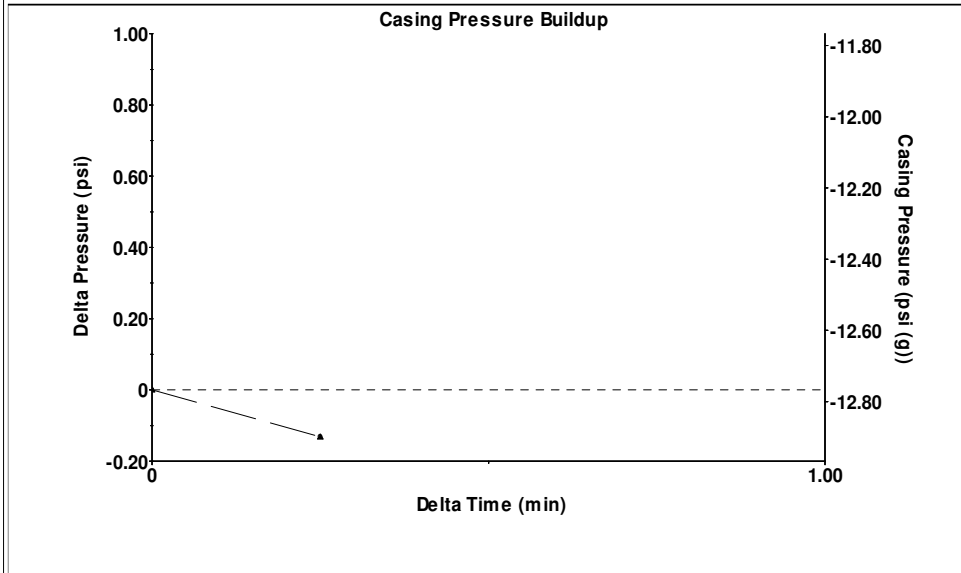


Filter Type High Pass Automatic Collar Count Yes Time 8.5 sec
 Manual Acoustic Veloc 703.663 ft/s Manual JTS/sec 11.0988 Joints 90.4255 Jts
 Depth 2866.49 ft

[0.5 to 1.5 (Sec)]

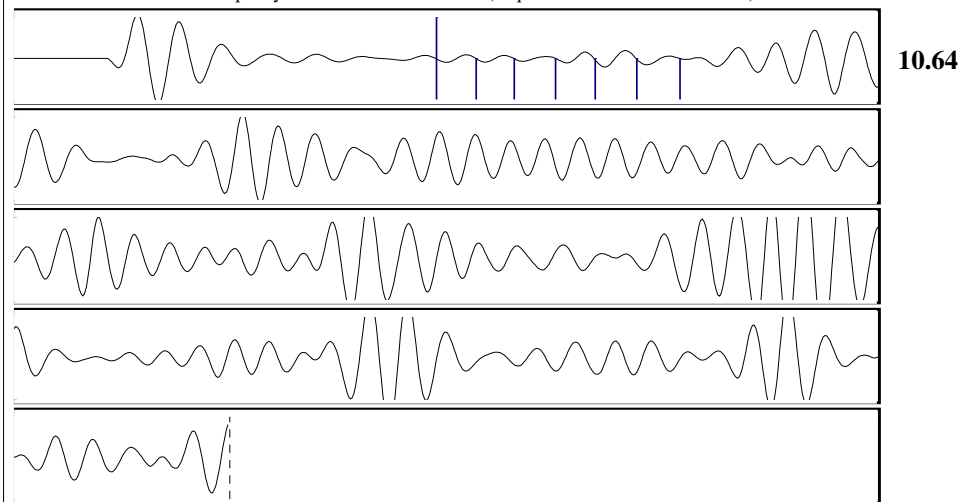


Analysis Method: Automatic



Change in Pressure -0.13 psi PT12363
 Change in Time 0.25 min Range 0 - ? psi

Production Current	Potential	Casing Pressure	Producing
Oil - * -	- * - BBL/D	-12.8 psi (g)	
Water - * -	- * - BBL/D	Casing Pressure Buildup	Annular Gas Flow
Gas - * -	- * - Mscf/D	-0.1 psi	- * - Mscf/D
		0.25 min	% Liquid
IPR Method	Vogel	Gas/Liquid Interface Pressure	100 %
PBHP/SBHP	- * -	- * - psi (g)	
Production Efficiency	0.0		
Oil 40 deg.API		Liquid Level Depth	
Water 1.05 Sp.Gr.H2O		2866.49 ft	
Gas 1.29 Sp.Gr.AIR		Pump Intake Depth	
		4379.00 ft	
Acoustic Velocity	674.468 ft/s	Formation Depth	
		4349.00 ft	
Formation Submergence			Pump Intake
Total Gaseous Liquid Column HT (TVD)	- * - ft		- * - psi (g)
Equivalent Gas Free Liquid HT (TVD)	- * - ft		Producing BHP
			- * - psi (g)
Acoustic Test			Static BHP
			- * - psi (g)



Acoustic Velocity 674.468 ft/s Joints counted 6
 Joints Per Second 10.6383 jts/sec Joints to liquid level 90.4255
 Depth to liquid level 2866.49 ft Filter Width 9.09878 13.0988
 Automatic Collar Count Yes Time to 1st Collar 0.98 1.544

STATE OF KANSAS

CORPORATION COMMISSION
CONSERVATION DIVISION
DISTRICT OFFICE No. 1
210 E. FRONTVIEW, SUITE A
DODGE CITY, KS 67801



PHONE: 620-682-7933
<http://kcc.ks.gov/>

GOVERNOR JEFF COLYER, M.D.

SHARI FEIST ALBRECHT, CHAIR | JAY SCOTT EMLER, COMMISSIONER | PAT APPLE, COMMISSIONER

March 27, 2018

Casey Coats
Vess Oil Corporation
1700 WATERFRONT PKWY BLDG 500
WICHITA, KS 67206-6619

Re: Temporary Abandonment
API 15-135-30287-00-00
Lehner, R.V. #7 7
SW/4 Sec.24-20S-24W
Ness County, Kansas

Dear Casey Coats:

"Your temporary abandonment (TA) application for the well listed above has been approved. In accordance with K.A.R. 82-3-111 the TA status of this well will expire 03/27/2019.

- * If you return this well to service or plug it, please notify the District Office.
- * If you sell this well you are required to file a Transfer of Operator form, T-1.
- * If the well will remain temporarily abandoned, you must submit a new TA application, CP-111, before 03/27/2019.

You may contact me at the number above if you have questions.

Very truly yours,

Michael Maier"