

KANSAS CORPORATION COMMISSION
OIL & GAS CONSERVATION DIVISION

Form must be Typed
Form must be signed

TEMPORARY ABANDONMENT WELL APPLICATION

All blanks must be complete

OPERATOR: License#
Name:
Address 1:
Address 2:
City: State: Zip:
Contact Person:
Phone:
Contact Person Email:
Field Contact Person:
Field Contact Person Phone:

API No. 15-
Spot Description:
Sec. Twp. S. R.
GPS Location: Lat: Long:
Datum: NAD27 NAD83 WGS84
County: Elevation:
Lease Name: Well #:
Well Type: Oil Gas OG WSW Other:
SWD Permit #: ENHR Permit #:
Gas Storage Permit #:
Spud Date: Date Shut-In:

Table with 7 columns: Conductor, Surface, Production, Intermediate, Liner, Tubing. Rows include Size, Setting Depth, Amount of Cement, Top of Cement, Bottom of Cement.

Casing Fluid Level from Surface: How Determined? Date:
Casing Squeeze(s): to w / sacks of cement, to w / sacks of cement. Date:
Do you have a valid Oil & Gas Lease? Yes No
Depth and Type: Junk in Hole at Tools in Hole at Casing Leaks: Yes No Depth of casing leak(s):
Type Completion: ALT. I ALT. II Depth of: DV Tool: w / sacks of cement Port Collar: w / sack of cement
Packer Type: Size: Inch Set at: Feet
Total Depth: Plug Back Depth: Plug Back Method:

Geological Data:

Table with 4 columns: Formation Name, Formation Top, Formation Base, Completion Information. Rows 1 and 2.

UNDER PENALTY OF PERJURY I HEREBY ATTEST THAT THE INFORMATION CONTAINED HEREIN IS TRUE AND CORRECT TO THE BEST OF MY KNOWLEDGE

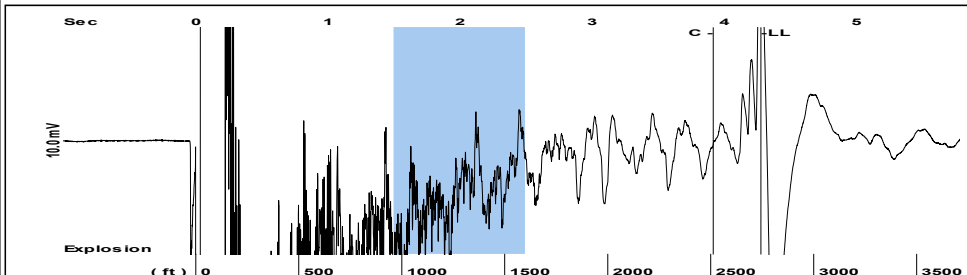
Submitted Electronically

Do NOT Write in This Space - KCC USE ONLY
Date Tested: Results: Date Plugged: Date Repaired: Date Put Back in Service:
Review Completed by: Comments:
TA Approved: Yes Denied Date:

Mail to the Appropriate KCC Conservation Office:

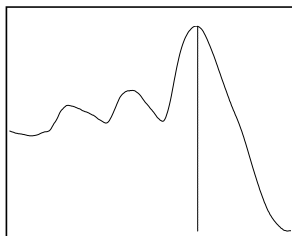
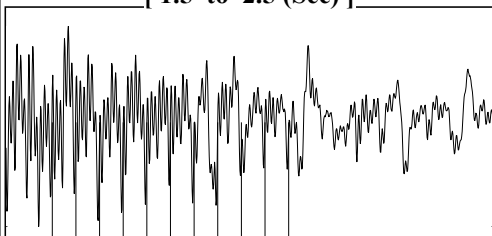
Table with 3 columns: Office Name, Address, Phone. Rows for District Office #1, #2, #3, #4.

Group: MyWells Well: Brecheisen # 2 (acquired on: 03/12/18 09:16:36)



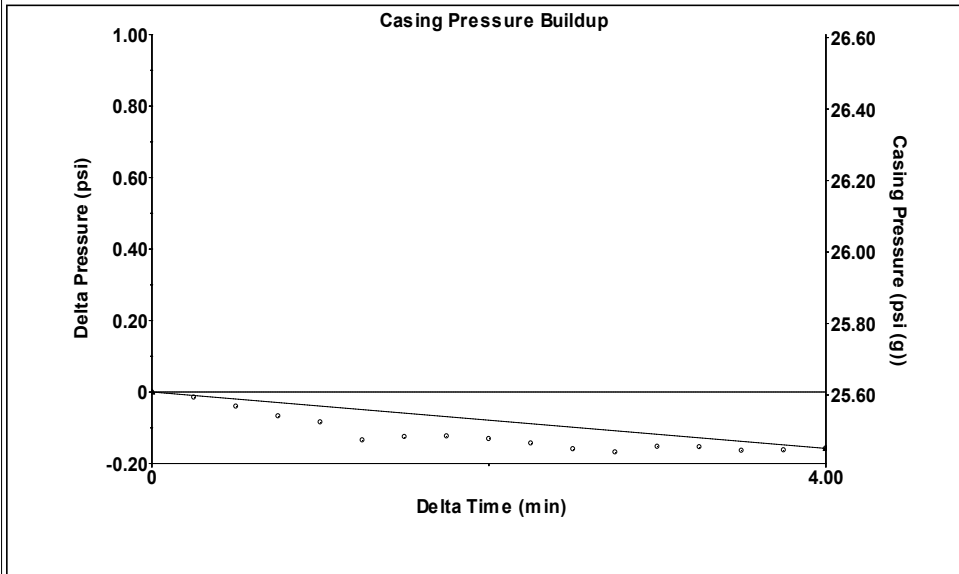
Filter Type High Pass Automatic Collar Count Yes Time 4.277 sec
 Manual Acoustic Velo 1290.72 ft/s Manual JTS/sec 20.6186 Joints 87.6434 Jts
 Depth 2743.24 ft

[1.5 to 2.5 (Sec)]



Analysis Method: Automatic

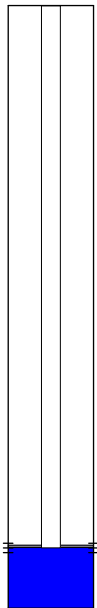
Group: MyWells Well: Brecheisen # 2 (acquired on: 03/12/18 09:16:36)



Change in Pressure -0.16 psi PT12865
 Change in Time 4.00 min Range 0 - ? psi

Group: MyWells Well: Brecheisen # 2 (acquired on: 03/12/18 09:16:36)

| | | | | | |
|---------------------------|----------------|--------------------------|--------|--------------------------------------|---------|
| Production | | Potential | | Casing Pressure | |
| Oil | - * - | - * - | BBL/D | 25.6 | psi (g) |
| Water | - * - | - * - | BBL/D | -0.2 | psi |
| Gas | - * - | - * - | Mscf/D | 4.00 | min |
| IPR Method | | Vogel | | Gas/Liquid Interface Pressure | |
| PBHP/SBHP | - * - | - * - | | 28.4 | psi (g) |
| Production Efficiency | 0.0 | | | | |
| Liquid Level Depth | | Pump Intake Depth | | Formation Depth | |
| Oil | 40 deg.API | 2743.24 | ft | 2759.00 | ft |
| Water | 1.05 Sp.Gr.H2O | | | | |
| Gas | 0.72 Sp.Gr.AIR | | | | |
| Acoustic Velocity | 1282.79 ft/s | | | | |



Producing

Annular Gas Flow 0 Mscf/D

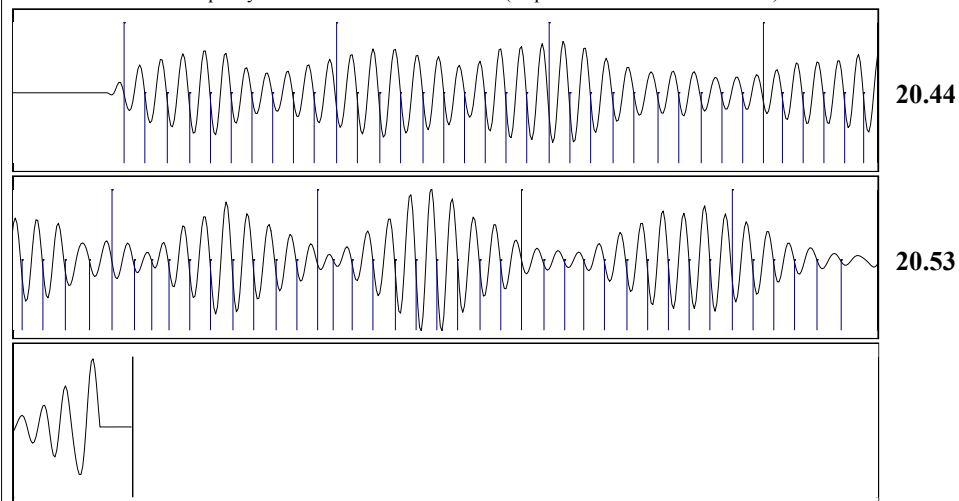
% Liquid 100 %

Pump Intake 33.7 psi (g)

Producing BHP 33.7 psi (g)

Static BHP - * - psi (g)

Group: MyWells Well: Brecheisen # 2 (acquired on: 03/12/18 09:16:36)



Acoustic Velocity 1282.79 ft/s Joints counted 75
 Joints Per Second 20.4918 jts/sec Joints to liquid level 87.6434
 Depth to liquid level 2743.24 ft Filter Width 18.6186 22.6186
 Automatic Collar Count Yes Time to 1st Collar 0.256 3.916

STATE OF KANSAS

CORPORATION COMMISSION
CONSERVATION DIVISION
DISTRICT OFFICE No. 1
210 E. FRONTVIEW, SUITE A
DODGE CITY, KS 67801



PHONE: 620-682-7933
<http://kcc.ks.gov/>

GOVERNOR JEFF COLYER, M.D.

SHARI FEIST ALBRECHT, CHAIR | JAY SCOTT EMLER, COMMISSIONER | PAT APPLE, COMMISSIONER

April 03, 2018

Melody C. Fletcher
Oil Producers, Inc. of Kansas
1710 WATERFRONT PKWY
WICHITA, KS 67206-6603

Re: Temporary Abandonment
API 15-189-22247-00-00
BRECHEISEN 2H-14
SW/4 Sec.14-35S-38W
Stevens County, Kansas

Dear Melody C. Fletcher :

"Your temporary abandonment (TA) application for the well listed above has been approved. In accordance with K.A.R. 82-3-111 the TA status of this well will expire 04/03/2019.

- * If you return this well to service or plug it, please notify the District Office.
- * If you sell this well you are required to file a Transfer of Operator form, T-1.
- * If the well will remain temporarily abandoned, you must submit a new TA application, CP-111, before 04/03/2019.

You may contact me at the number above if you have questions.

Very truly yours,

Michael Maier"