

KANSAS CORPORATION COMMISSION
OIL & GAS CONSERVATION DIVISION

TEMPORARY ABANDONMENT WELL APPLICATION

OPERATOR: License# _____
Name: _____
Address 1: _____
Address 2: _____
City: _____ State: _____ Zip: _____ + _____
Contact Person: _____
Phone:(_____) _____
Contact Person Email: _____
Field Contact Person: _____
Field Contact Person Phone: (_____) _____

API No. 15- _____
Spot Description: _____
- - - - - Sec. _____ Twp. _____ S. R. _____ E W
_____ feet from N / S Line of Section
_____ feet from E / W Line of Section
GPS Location: Lat: _____, Long: _____
Datum: NAD27 NAD83 WGS84
County: _____ Elevation: _____ GL KB
Lease Name: _____ Well #: _____
Well Type: (check one) Oil Gas OG WSW Other: _____
 SWD Permit #: _____ ENHR Permit #: _____
 Gas Storage Permit #: _____
Spud Date: _____ Date Shut-In: _____

Table with 7 columns: Conductor, Surface, Production, Intermediate, Liner, Tubing. Rows include Size, Setting Depth, Amount of Cement, Top of Cement, Bottom of Cement.

Casing Fluid Level from Surface: _____ How Determined? _____ Date: _____
Casing Squeeze(s): _____ to _____ w / _____ sacks of cement, _____ to _____ w / _____ sacks of cement. Date: _____
Do you have a valid Oil & Gas Lease? Yes No
Depth and Type: Junk in Hole at _____ Tools in Hole at _____ Casing Leaks: Yes No Depth of casing leak(s): _____
Type Completion: ALT. I ALT. II Depth of: DV Tool: _____ w / _____ sacks of cement Port Collar: _____ w / _____ sack of cement
Packer Type: _____ Size: _____ Inch Set at: _____ Feet
Total Depth: _____ Plug Back Depth: _____ Plug Back Method: _____

Geological Date:

Table with 4 columns: Formation Name, Formation Top, Formation Base, Completion Information. Rows 1 and 2.

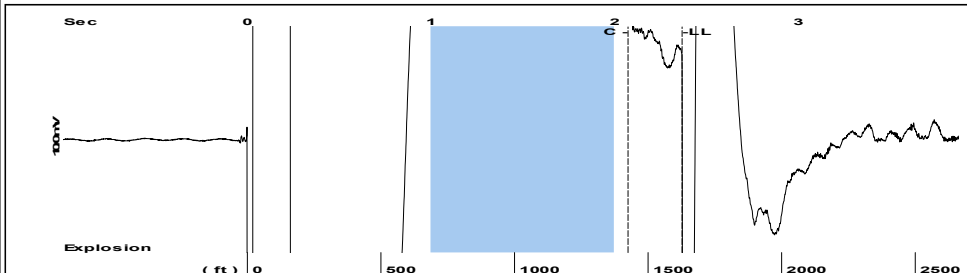
UNDER PENALTY OF PERJURY I HEREBY ATTEST THAT THE INFORMATION CONTAINED HEREIN IS TRUE AND CORRECT TO THE BEST OF MY KNOWLEDGE

Submitted Electronically

Do NOT Write in This Space - KCC USE ONLY
Date Tested: _____ Results: _____ Date Plugged: _____ Date Repaired: _____ Date Put Back in Service: _____
Review Completed by: _____ Comments: _____
TA Approved: Yes Denied Date: _____

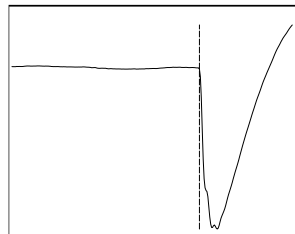
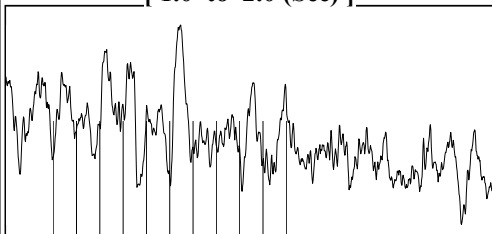
Mail to the Appropriate KCC Conservation Office:

Table with 3 columns: District Office, Address, Phone. Rows for District Office #1, #2, #3, #4.

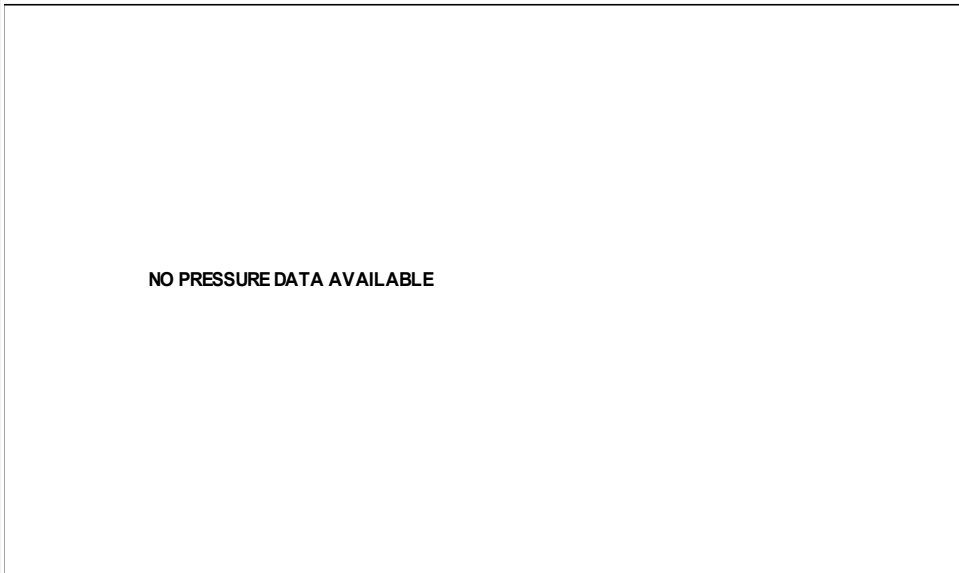


Filter Type High Pass Automatic Collar Count Yes Time 2.366 sec
 Manual Acoustic Veloc 1323.59 ft/s Manual JTS/sec 20.8768 Joints 51.3285 Jts
 Depth 1627.11 ft

[1.0 to 2.0 (Sec)]



Analysis Method: Automatic



Change in Pressure 0.00 psi PT6854
 Range 0 - ? psi
 Change in Time 0.00 min

Production Current Potential
 Oil 5 - * - BBL/D
 Water 302 - * - BBL/D
 Gas 0.0 - * - Mscf/D

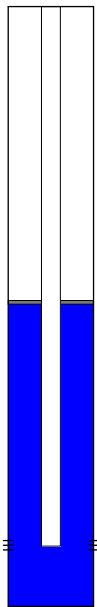
IPR Method Vogel
 PBHP/SBHP - * -
 Production Efficiency 0.0

Oil 28 deg.API
 Water 1.05 Sp.Gr.H2O
 Gas 0.63 Sp.Gr.AIR

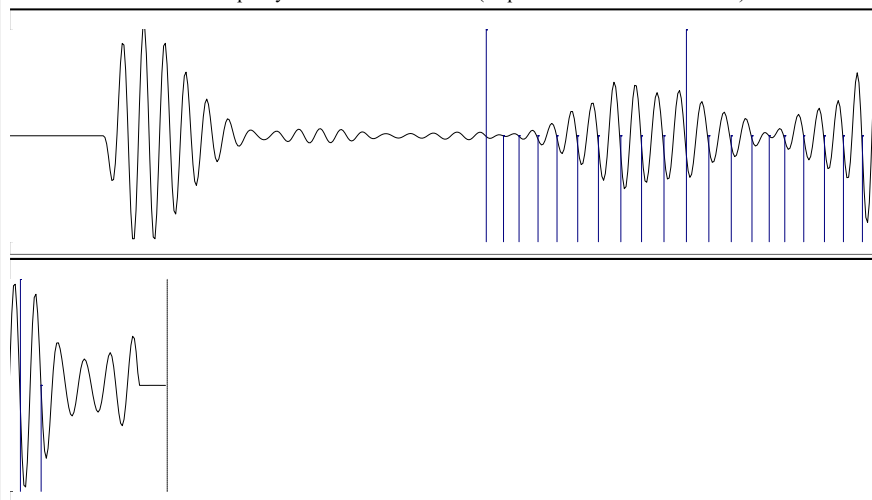
Acoustic Velocity 1375.41 ft/s

Casing Pressure 0.1 psi (g)
 Casing Pressure Buildup -0.049 psi
 0.75 min
 Gas/Liquid Interface Pressure 0.6 psi (g)

Liquid Level Depth 1627.11 ft
 Pump Intake Depth 3340.00 ft
 Formation Depth 3332.00 ft



Static
 Oil Column Height MD 28 ft
 Water Column Height MD 1672 ft
 Static BHP 770.9 psi (g)



Acoustic Velocity 1375.41 ft/s Joints counted 21
 Joints Per Second 21.6942 jts/sec Joints to liquid level 51.3285
 Depth to liquid level 1627.11 ft Filter Width 18.8768 22.8768
 Automatic Collar Count Yes Time to 1st Collar 1.104 2.072

STATE OF KANSAS

CORPORATION COMMISSION
CONSERVATION DIVISION
DISTRICT OFFICE No. 4
2301 E. 13TH STREET
HAYS, KS 67601-2651



PHONE: 785-261-6250
FAX: 785-625-0564
<http://kcc.ks.gov/>

GOVERNOR JEFF COLYER, M.D.

SHARI FEIST ALBRECHT, CHAIR | JAY SCOTT EMLER, COMMISSIONER | PAT APPLE, COMMISSIONER

April 02, 2018

Zach Patterson
American Oil LLC
1200 MAIN SUITE 410
HAYS, KS 67601

Re: Temporary Abandonment
API 15-051-22423-00-00
PEARL CRESS 5
SE/4 Sec.13-11S-17W
Ellis County, Kansas

Dear Zach Patterson:

"Your temporary abandonment (TA) application for the well listed above has been approved. In accordance with K.A.R. 82-3-111 the TA status of this well will expire 04/02/2019.

- * If you return this well to service or plug it, please notify the District Office.
- * If you sell this well you are required to file a Transfer of Operator form, T-1.
- * If the well will remain temporarily abandoned, you must submit a new TA application, CP-111, before 04/02/2019.

You may contact me at the number above if you have questions.

Very truly yours,

RICHARD WILLIAMS"