

KANSAS CORPORATION COMMISSION
OIL & GAS CONSERVATION DIVISION

TEMPORARY ABANDONMENT WELL APPLICATION

OPERATOR: License# _____
 Name: _____
 Address 1: _____
 Address 2: _____
 City: _____ State: _____ Zip: _____ + _____
 Contact Person: _____
 Phone: (_____) _____
 Contact Person Email: _____
 Field Contact Person: _____
 Field Contact Person Phone: (_____) _____

API No. 15- _____
 Spot Description: _____
 _____ - _____ - _____ - _____ Sec. _____ Twp. _____ S. R. _____ E W
 _____ feet from N / S Line of Section
 _____ feet from E / W Line of Section
 GPS Location: Lat: _____, Long: _____
(e.g. xx.xxxxx) (e.g. -xxx.xxxxx)
 Datum: NAD27 NAD83 WGS84
 County: _____ Elevation: _____ GL KB
 Lease Name: _____ Well #: _____
 Well Type: (check one) Oil Gas OG WSW Other: _____
 SWD Permit #: _____ ENHR Permit #: _____
 Gas Storage Permit #: _____
 Spud Date: _____ Date Shut-In: _____

	Conductor	Surface	Production	Intermediate	Liner	Tubing
Size						
Setting Depth						
Amount of Cement						
Top of Cement						
Bottom of Cement						

Casing Fluid Level from Surface: _____ How Determined? _____ Date: _____
 Casing Squeeze(s): _____ to _____ w / _____ sacks of cement, _____ to _____ w / _____ sacks of cement. Date: _____
(top) (bottom) (top) (bottom)
 Do you have a valid Oil & Gas Lease? Yes No
 Depth and Type: Junk in Hole at _____ Tools in Hole at _____ Casing Leaks: Yes No Depth of casing leak(s): _____
(depth) (depth)
 Type Completion: ALT. I ALT. II Depth of: DV Tool: _____ w / _____ sacks of cement Port Collar: _____ w / _____ sack of cement
(depth) (depth)
 Packer Type: _____ Size: _____ Inch Set at: _____ Feet
 Total Depth: _____ Plug Back Depth: _____ Plug Back Method: _____

Geological Data:

Formation Name	Formation Top	Formation Base	Completion Information
1. _____	At: _____	to _____ Feet	Perforation Interval _____ to _____ Feet or Open Hole Interval _____ to _____ Feet
2. _____	At: _____	to _____ Feet	Perforation Interval _____ to _____ Feet or Open Hole Interval _____ to _____ Feet

UNDER PENALTY OF PERJURY I HEREBY ATTEST THAT THE INFORMATION CONTAINED HEREIN IS TRUE AND CORRECT TO THE BEST OF MY KNOWLEDGE

Submitted Electronically

Do NOT Write in This Space - KCC USE ONLY	Date Tested: _____	Results: _____	Date Plugged: _____	Date Repaired: _____	Date Put Back in Service: _____
	Review Completed by: _____ Comments: _____				
TA Approved: <input type="checkbox"/> Yes <input type="checkbox"/> Denied Date: _____					

Mail to the Appropriate KCC Conservation Office:

	KCC District Office #1 - 210 E. Frontview, Suite A, Dodge City, KS 67801	Phone 620.682.7933
	KCC District Office #2 - 3450 N. Rock Road, Building 600, Suite 601, Wichita, KS 67226	Phone 316.337.7400
	KCC District Office #3 - 137 E. 21st St., Chanute, KS 66720	Phone 620.902.6450
	KCC District Office #4 - 2301 E. 13th Street, Hays, KS 67601-2651	Phone 785.261.6250

General

Well ID 126378
Well Lousch D 1
Company Sandridge
Operator - * -
Lease Name Lousch D 1
Elevation 0.00 ft
Production Method Other
Dataset Description

Comment

Surface Unit

Manufacturer - * -
Unit Class Conventional
Unit API Number - * -
Measured Stroke Length 100.000 in
Rotation CW
Counter Balance Effect (Weights Level) - * - Klb
Weight Of Counter Weights 2000 lb

Prime Mover

Motor Type Electric
Rated HP - * - HP
Run Time 24 hr/day
MFG/Comment - * -

Electric Motor Parameters

Rated Full Load AMPS - * -
Rated Full Load RPM - * -
Synchronous RPM 1200
Voltage - * -
Hertz 60
Phase 3
Power Consumption 5
Power Demand 8 \$/KW

Tubulars

Tubing OD 2.375 in
Casing OD 4.500 in
Average Joint Length 31.700 ft
Anchor Depth - * - ft
Kelly Bushing 0.00 ft

Pump

Plunger Diameter - * - in
Pump Intake Depth 5008.00 ft
**Total Rod Length < Pump Depth

Polished Rod

Polished Rod Diameter - * - in

Rod String

	Top Taper	Taper 2	Taper 3	Taper 4	Taper 5	Taper 6
Rod Type	- * -	- * -	- * -	- * -	- * -	- * -
Rod Length	- * -	- * -	- * -	- * -	- * -	- * - ft
Rod Diameter	- * -	- * -	- * -	- * -	- * -	- * - in
Rod Weight	0.0	0.0	0.0	0.0	0.0	0.0 lb

Total Rod Length 0
Total Rod Weight 0.00

Damp Up 0.05
Damp Down 0.05

Conditions

Pressure

Static BHP 665.9 psi (g)
Static BHP Method Acoustic
Static BHP Date 03/26/2018

Producing BHP - * - psi (g)
Producing BHP Method - * -
Producing BHP Date - * -
Formation Depth 5472.00 ft

Production

Oil Production - * - BBL/D
Water Production - * - BBL/D
Gas Production - * - Mscf/D
Production Date - * -

Temperatures

Surface Temperature 70 deg F
Bottomhole Temperature 150 deg F

Surface Producing Pressures

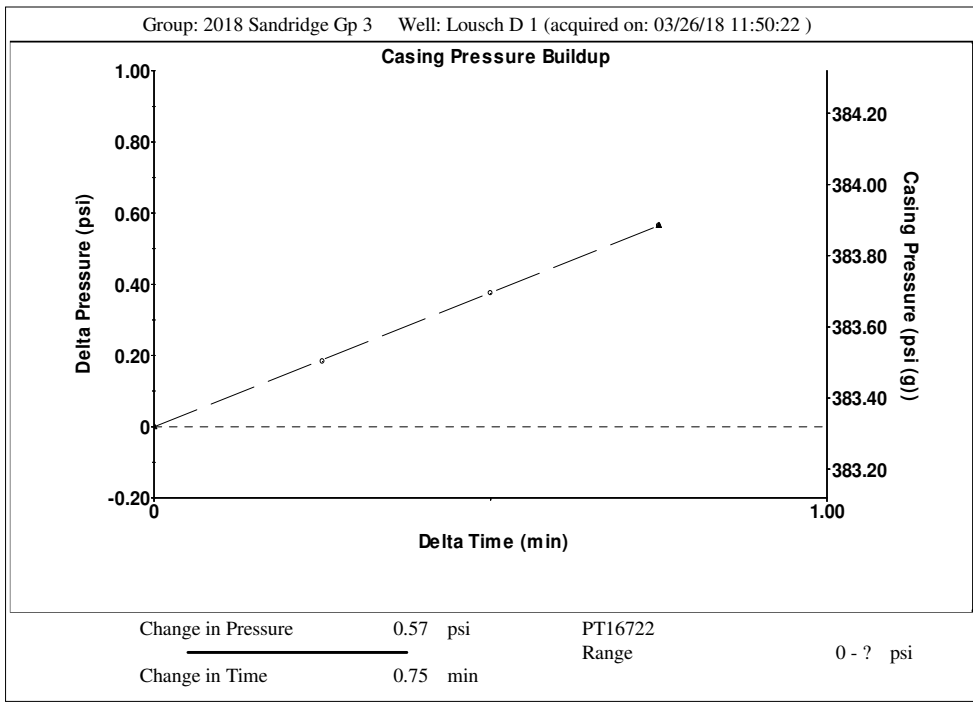
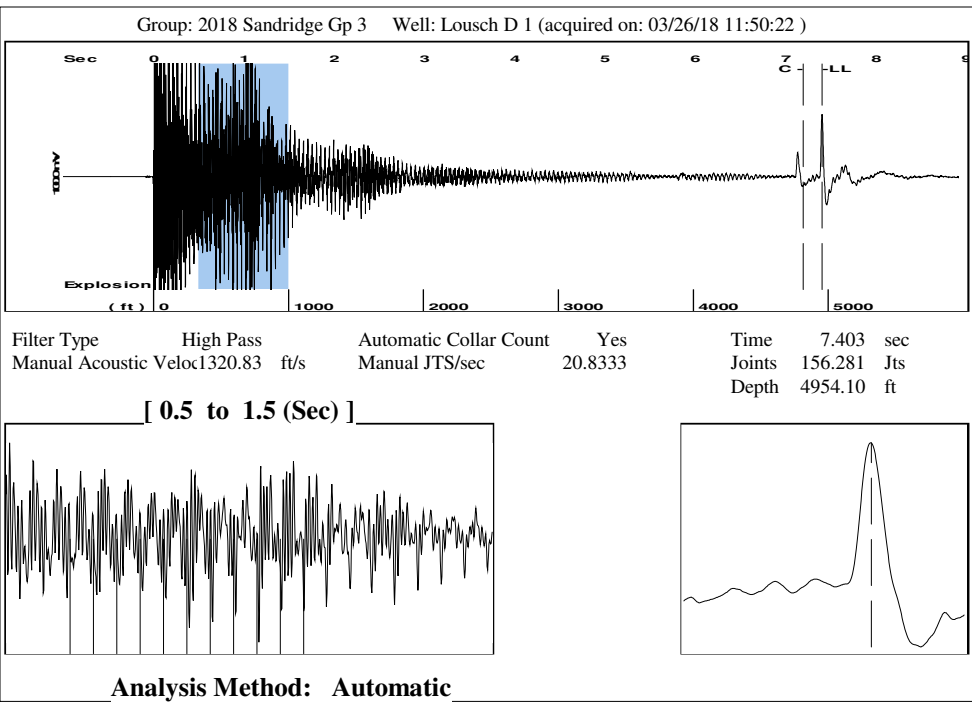
Tubing Pressure - * - psi (g)
Casing Pressure 383.3 psi (g)

Fluid Properties

Oil API 40 deg.API
Water Specific Gravity 1.05 Sp.Gr.H2O

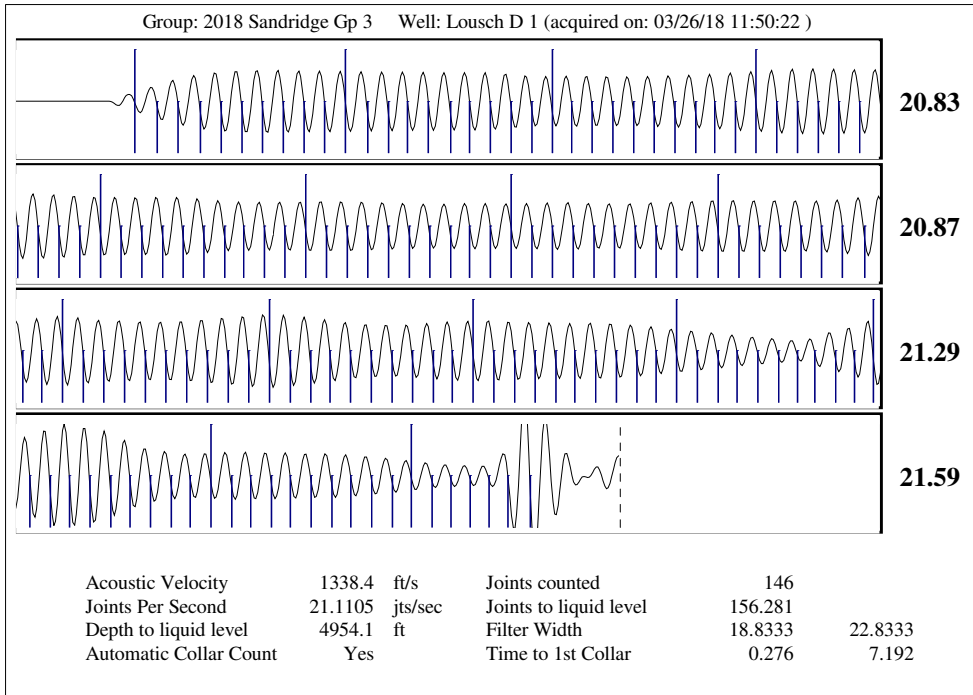
Casing Pressure Buildup

Change in Pressure 0.6 psi
Over Change in Time 0.75 min



Group: 2018 Sandridge Gp 3 Well: Lousch D 1 (acquired on: 03/26/18 11:50:22)

Production	Potential	Casing Pressure	
Current		383.3 psi (g)	
Oil - * -	- * - BBL/D	Casing Pressure Buildup	
Water - * -	- * - BBL/D	0.6 psi	
Gas - * -	- * - Mscf/D	0.75 min	Oil Column Height MD 0 ft
IPR Method	Vogel	Gas/Liquid Interface Pressure	Water Column Height MD 518 ft
PBHP/SBHP	- * -	430.4 psi (g)	Static BHP 665.9 psi (g)
Production Efficiency	0.0	Liquid Level Depth	
		4954.10 ft	
Oil 40 deg.API		Tubing Intake Depth	
Water 1.05 Sp.Gr.H2O		5008.00 ft	
Gas 0.64 Sp.Gr.AIR		Formation Depth	
		5472.00 ft	
Acoustic Velocity	1338.4 ft/s		
Lousch D 1			



STATE OF KANSAS

CORPORATION COMMISSION
CONSERVATION DIVISION
DISTRICT OFFICE No. 1
210 E. FRONTVIEW, SUITE A
DODGE CITY, KS 67801



PHONE: 620-682-7933
<http://kcc.ks.gov/>

GOVERNOR JEFF COLYER, M.D.
SHARI FEIST ALBRECHT, CHAIR | JAY SCOTT EMLER, COMMISSIONER | PAT APPLE, COMMISSIONER

April 03, 2018

Laci Bevans
SandRidge Exploration and Production LLC
123 ROBERT S. KERR AVE
OKLAHOMA CITY, OK 73102-6406

Re: Temporary Abandonment
API 15-033-21043-00-00
LOUSCH D 1
SW/4 Sec.31-32S-18W
Comanche County, Kansas

Dear Laci Bevans:

"Your temporary abandonment (TA) application for the well listed above has been approved. In accordance with K.A.R. 82-3-111 the TA status of this well will expire 04/03/2019.

- * If you return this well to service or plug it, please notify the District Office.
- * If you sell this well you are required to file a Transfer of Operator form, T-1.
- * If the well will remain temporarily abandoned, you must submit a new TA application, CP-111, before 04/03/2019.

You may contact me at the number above if you have questions.

Very truly yours,

Michael Maier"