

KANSAS CORPORATION COMMISSION
OIL & GAS CONSERVATION DIVISION

TEMPORARY ABANDONMENT WELL APPLICATION

OPERATOR: License#
Name:
Address 1:
Address 2:
City: State: Zip:
Contact Person:
Phone:
Contact Person Email:
Field Contact Person:
Field Contact Person Phone:

API No. 15-
Spot Description:
Sec. Twp. S. R.
GPS Location: Lat: Long:
Datum: NAD27 NAD83 WGS84
County: Elevation:
Lease Name: Well #:
Well Type: Oil Gas OG WSW Other:
SWD Permit #: ENHR Permit #:
Gas Storage Permit #:
Spud Date: Date Shut-In:

Table with 7 columns: Conductor, Surface, Production, Intermediate, Liner, Tubing. Rows include Size, Setting Depth, Amount of Cement, Top of Cement, Bottom of Cement.

Casing Fluid Level from Surface: How Determined? Date:
Casing Squeeze(s): to w / sacks of cement, to w / sacks of cement. Date:
Do you have a valid Oil & Gas Lease? Yes No
Depth and Type: Junk in Hole at Tools in Hole at Casing Leaks: Yes No Depth of casing leak(s):
Type Completion: ALT. I ALT. II Depth of: DV Tool: w / sacks of cement Port Collar: w / sack of cement
Packer Type: Size: Inch Set at: Feet
Total Depth: Plug Back Depth: Plug Back Method:

Geological Data:

Table with 4 columns: Formation Name, Formation Top, Formation Base, Completion Information. Rows 1 and 2.

UNDER PENALTY OF PERJURY I HEREBY ATTEST THAT THE INFORMATION CONTAINED HEREIN IS TRUE AND CORRECT TO THE BEST OF MY KNOWLEDGE

Submitted Electronically

Do NOT Write in This Space - KCC USE ONLY
Date Tested: Results: Date Plugged: Date Repaired: Date Put Back in Service:
Review Completed by: Comments:
TA Approved: Yes Denied Date:

Mail to the Appropriate KCC Conservation Office:

Table with 2 columns: Office Address, Phone. Rows for District Office #1, #2, #3, #4.

General

Well ID 125212
 Well Pepper 3419 4-4H
 Company Sandridge
 Operator - * -
 Lease Name Pepper 3419 4-4H
 Elevation 1996.00 ft
 Production Method Other
 Dataset Description

Comment

Surface Unit

Manufacturer - * -
 Unit Class Conventional
 Unit API Number - * -
 Measured Stroke Length - * - in
 Rotation CW
 Counter Balance Effect (Weights Level) - * - Klb
 Weight Of Counter Weights 2000 lb

Prime Mover

Motor Type Electric
 Rated HP - * - HP
 Run Time 24 hr/day
 MFG/Comment - * -

Electric Motor Parameters

Rated Full Load AMPS - * -
 Rated Full Load RPM - * -
 Synchronous RPM 1200
 Voltage - * -
 Hertz 60
 Phase 3
 Power Consumption 5
 Power Demand 8 \$/KW

Tubulars

Tubing OD 2.875 in
 Casing OD 7.000 in
 Average Joint Length 31.700 ft
 Anchor Depth - * - ft
 Kelly Bushing 20.00 ft

Pump

Plunger Diameter - * - in
 Pump Intake Depth 5403.00 ft
 **Total Rod Length < Pump Depth

Polished Rod

Polished Rod Diameter - * - in

Rod String

| | Top Taper | Taper 2 | Taper 3 | Taper 4 | Taper 5 | Taper 6 |
|--------------|-----------|---------|---------|---------|---------|----------|
| Rod Type | - * - | - * - | - * - | - * - | - * - | - * - |
| Rod Length | - * - | - * - | - * - | - * - | - * - | - * - ft |
| Rod Diameter | - * - | - * - | - * - | - * - | - * - | - * - in |
| Rod Weight | 0.0 | 0.0 | 0.0 | 0.0 | 0.0 | 0.0 lb |

Total Rod Length 0
 Total Rod Weight 0.00

Damp Up 0.052015
 Damp Down 0.052015

Conditions

Pressure

Static BHP 624.6 psi (g)
 Static BHP Method Acoustic
 Static BHP Date 03/26/2018
 Producing BHP - * - psi (g)
 Producing BHP Method - * -
 Producing BHP Date - * -
 Formation Depth 6057.00 ft

Surface Producing Pressures

Tubing Pressure - * - psi (g)
 Casing Pressure 236.0 psi (g)

Casing Pressure Buildup

Change in Pressure 1.3 psi
 Over Change in Time 1.50 min

Production

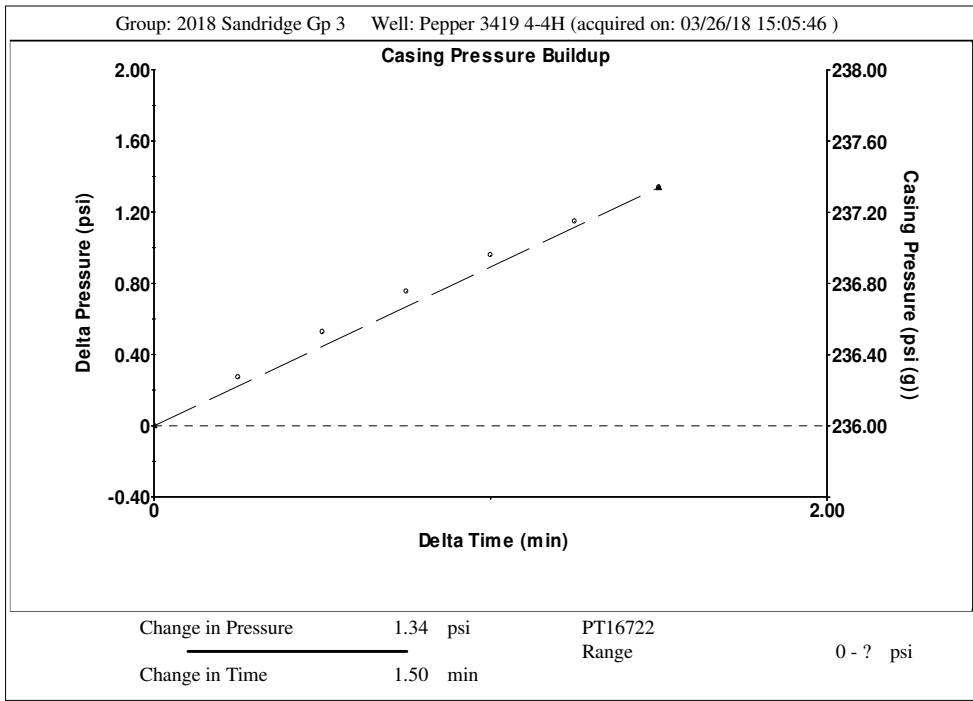
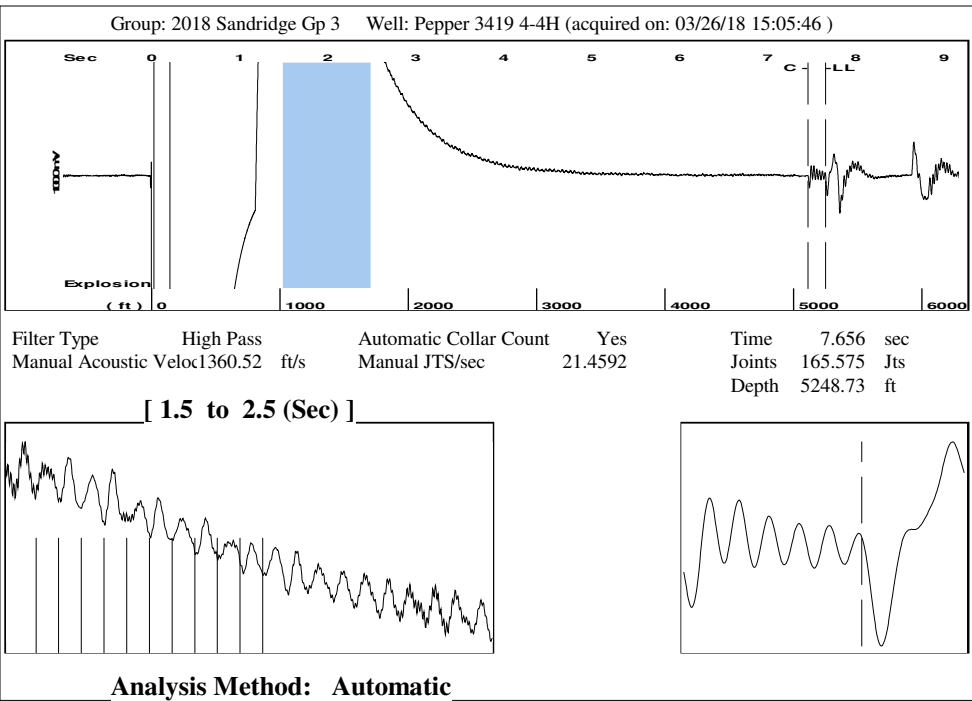
Oil Production 0 BBL/D
 Water Production 1 BBL/D
 Gas Production - * - Mscf/D
 Production Date 03/19/2018

Temperatures

Surface Temperature 70 deg F
 Bottomhole Temperature 150 deg F

Fluid Properties

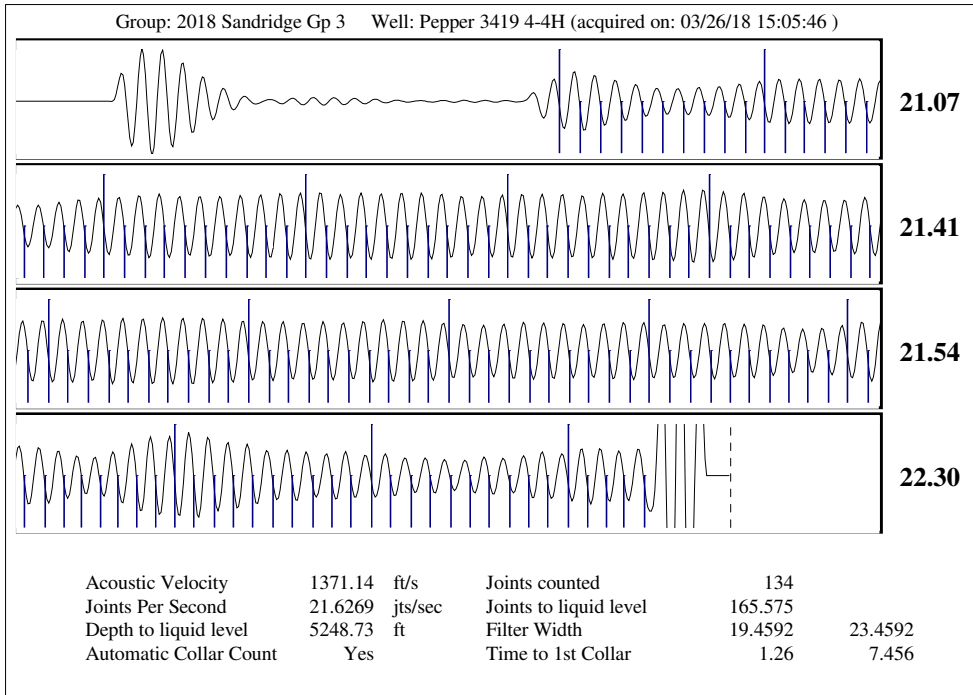
Oil API 40 deg.API
 Water Specific Gravity 1.05 Sp.Gr.H2O



Group: 2018 Sandridge Gp 3 Well: Pepper 3419 4-4H (acquired on: 03/26/18 15:05:46)

| | | | | |
|-----------------------|------------------|--------------------------------------|----------------------------|------------------------|
| Production | Potential | Casing Pressure | | Static |
| Current | - * - BBL/D | 236.0 psi (g) | | |
| Oil 0 | - * - BBL/D | Casing Pressure Buildup | | |
| Water 1 | - * - Mscf/D | 1.3 psi | | |
| Gas - * - | | 1.50 min | Oil Column Height | MD 0 ft |
| IPR Method | Vogel | Gas/Liquid Interface Pressure | Water Column Height | MD 788 ft |
| PBHP/SBHP | - * - | 266.2 psi (g) | Liquid Level Depth | 5248.73 ft |
| Production Efficiency | 0.0 | Tubing Intake Depth | 5403.00 ft | Formation Depth |
| Oil 40 deg.API | | 6057.00 ft | Static BHP | 624.6 psi (g) |
| Water 1.05 Sp.Gr.H2O | | | | |
| Gas 0.63 Sp.Gr.AIR | | | | |
| Acoustic Velocity | 1371.14 ft/s | | | |

Peppers 3419 4-4H



STATE OF KANSAS

CORPORATION COMMISSION
CONSERVATION DIVISION
DISTRICT OFFICE No. 1
210 E. FRONTVIEW, SUITE A
DODGE CITY, KS 67801



PHONE: 620-682-7933
<http://kcc.ks.gov/>

GOVERNOR JEFF COLYER, M.D.
SHARI FEIST ALBRECHT, CHAIR | JAY SCOTT EMLER, COMMISSIONER | PAT APPLE, COMMISSIONER

April 03, 2018

Laci Bevans
SandRidge Exploration and Production LLC
123 ROBERT S. KERR AVE
OKLAHOMA CITY, OK 73102-6406

Re: Temporary Abandonment
API 15-033-21711-01-00
PEPPER 3419 4-4H
SW/4 Sec.33-33S-19W
Comanche County, Kansas

Dear Laci Bevans:

"Your temporary abandonment (TA) application for the well listed above has been approved. In accordance with K.A.R. 82-3-111 the TA status of this well will expire 04/03/2019.

- * If you return this well to service or plug it, please notify the District Office.
- * If you sell this well you are required to file a Transfer of Operator form, T-1.
- * If the well will remain temporarily abandoned, you must submit a new TA application, CP-111, before 04/03/2019.

You may contact me at the number above if you have questions.

Very truly yours,

Michael Maier"