

2428 Toulon Ave
Hays, KS 67601
Phone: 785-625-4311
Cell Phone: 785-635-1660
janelst1969@gmail.com

GEOLOGIST'S WELL REPORT

COMPANY: Staab Oil Company #6037
WELL: Maddy / Echart
FIELD: wildcat
LOCATION (legal): SE, SE, SW, SW - 245' E, SL, 1240' FWL
Section: 10 TWP 8S RGE 18W
(Map) 9 1/2 miles north, west 1 mile, 1/2 mile S, 1/2 mile west
COUNTY: Rooks STATE: Kansas
ELEVATION: 1877' K.B., 1872' G.L.
Depths measured from Kelly Bushing
A. P. I. NUMBER: 15.163-24348
GEOLOGY BY: Janel Staab

PERTINENT WELL DATA

CONTRACTOR Shields Drilling Co. # 5184

RIG 1 HYDRAULICS Bethlehem 225 6x14x

DRILL PIPE 4 1/2" X-H COLLARS 6 1/4" 233'

CASING: SURFACE 8 5/8" @ 215" w/150 SX common

PRODUCTION 5 1/2 @ 3390 w/150 SX common

DRILLING FLUID: COMPANY Mud Co/Service Mud Inc.

TYPE: Chemical (Gary Schmidtberger)

REMARKS: Full Service

DRILLSTEM TESTS: COMPANY Trilobite Testing

NUMBER OF TESTS 3 Brannan Lonsdale

ELECTIC LOGS: COMPANY ELI

DETAIL (5") 2700' - RTD

TYPE D.I. Comp N-D. Micro

DRILLING TIME FROM 2750' TO RTD

SAMPLE TIME FROM 2750' TO RTD

SUPERVISION FROM 2750' TO RTD

VERTICAL DEVIATION 1° @ 3045'

PLUGGING REPORT _____

RESERVE PIT _____

DAILY REPORT

DATE:	7 a.m. Depth	RIG ACTIVITY
10-11-17	Spud	
10-12-17	217'	W.O.C.
10-13-17	588'	Blow out preventer not working waiting on replacement part
10-14-17	588'	
10-15-17	1275'	Drilling Anhydrite
10-16-17	2004'	Drilling sand + shale
10-17-17	2630'	Drilling shale + lime
10-18-17	3093'	Drilling LKC - B
10-19-17	3145'	Drilling LKC G
10-20-17	3268'	Drilling Below BKC
10-21-17	3390'	DST #3
10-22-17		Setting casing

DRILL STEM TESTS

NO	INTERVAL	IFP/TIME	ISIP/TIME	FFP/TIME	FSIP/TIME	IHP/FHP	RECOVER
1	LKC D.F 3091' 3045'	32# 61# 5"	1095# 60"	66# 187# 60"	1048# 90"	1578 1551	362' MW 60% 40% 2' CO
2	LKC #L 3182'- 3269'	32# 42# 5"	1140# 60"	48# 86# 60"	1119# 90"	1162 1169	93' WM w/oil sp 80% m
3	Arbuckle 3305- 3340	33# 38# 5"	1095# 60"	41# 76# 60"	979# 90"	1769 1694	60' OCM 20% 60' C60 75%
4							
5							
6							
7							

MUD RECORD

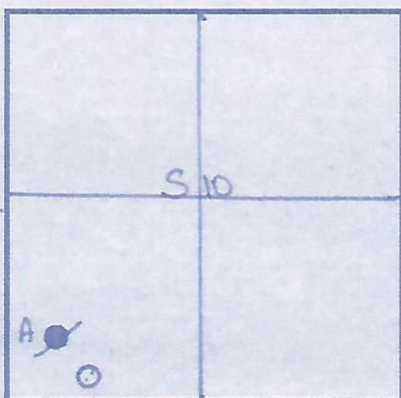
SHK	DEPTH	WT	VIS	FIL	CHL	YP	LOM
1	1275'	9.9	34	NC	1100	-	TF
2	2004'	10.4	35	NC	5200	-	TF
3	2630'	9.3	60+	7.2	1300	38	3
4	3093'	9.6	53	7.2	1400	25	1
5	3145'	9.2	43	7.2	2400	19	1
6	3285'	9.6	55	7.2	2700	28	1
7	3390'	-	-	-	-	-	-
8							
9							
10							
11							

BIT RECORD

NO	SIZE	MAKE	TYPE	DEPTHOUT	FEET	HOURS
1	12 1/4"	Reed	Multitooth	217'	217'	
2	7 7/8"	Reed	S-52	3390'	3173'	
3						
4						

FORMATION TOPS & STRUCTURAL GEO

REFERRED TO:



- A: _____
- B: Maddy #1
- C: _____
- D: _____
- E: _____

STRATIGRAPHIC MARKERS	SUBJECT WELL			STRUCTURAL POSITION		
	SAMPLE	E. LOG	DATUM	A	B	C
Anhydrite	1248	1243	+634	+628		
Base	1285	1281	+596	+589		
Topeka	2801	2797	-920	-925		
Heeb Sh.	3003	3003	-1126	-1133		
Toronto	3030	3027	-1150	-1154		
LKC	3051	3047	-1170	-1175		
BXC	3260	3265	-1388	-1391		
Arbuckle	3300	3300	-1423	-1429		
T.O	3390	3389	-1512	-1495		

Strap 1.32' short

LOGY

SUMMARY

The Maddy/Echart #1 was drilled using
Location was Sec 10, T8S, R18W in Rook
Starting on Oct 11 2017 and set pipe on

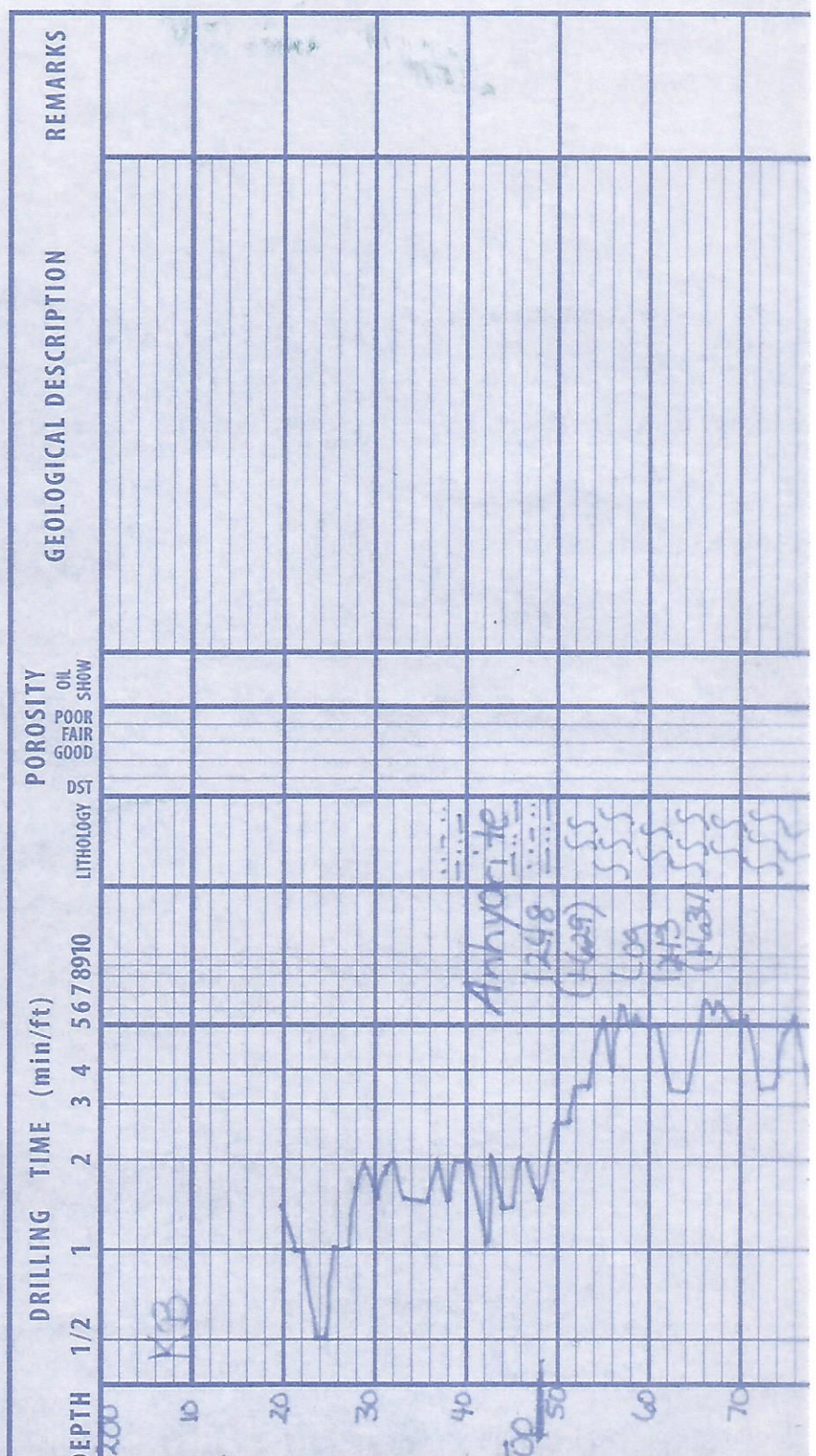
3-D seismic indicated that this location
Stratigraphically high compared to surround
locations

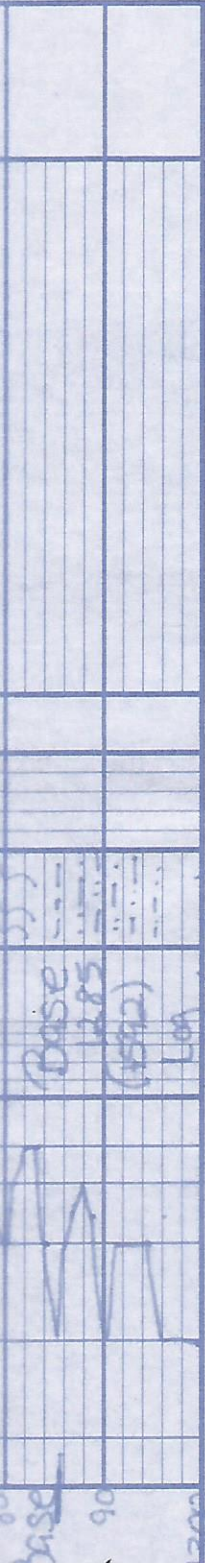
3. DST's were performed as well as log
DST#3 had a positive result and logs c
findings.

As A result production pipe were ran a
area will be in the Arbuckle.

Paul Seab

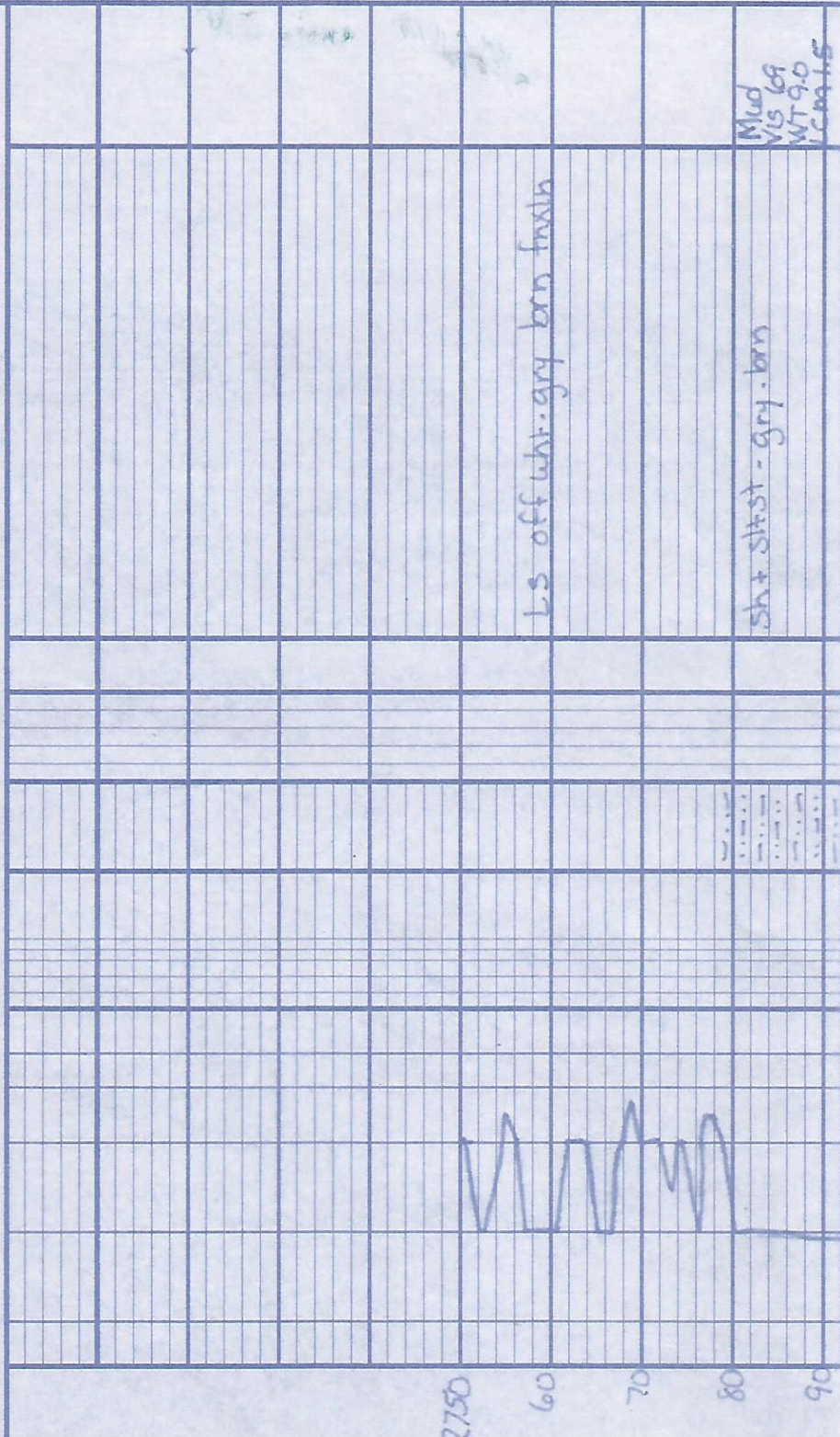
Wells Rig
 Co. Kansas
 Oct 22 17
 n was
 ing
 s ran.
 nirmed
 d focus





Base
1285
(15812)

Log
1281 (+596)



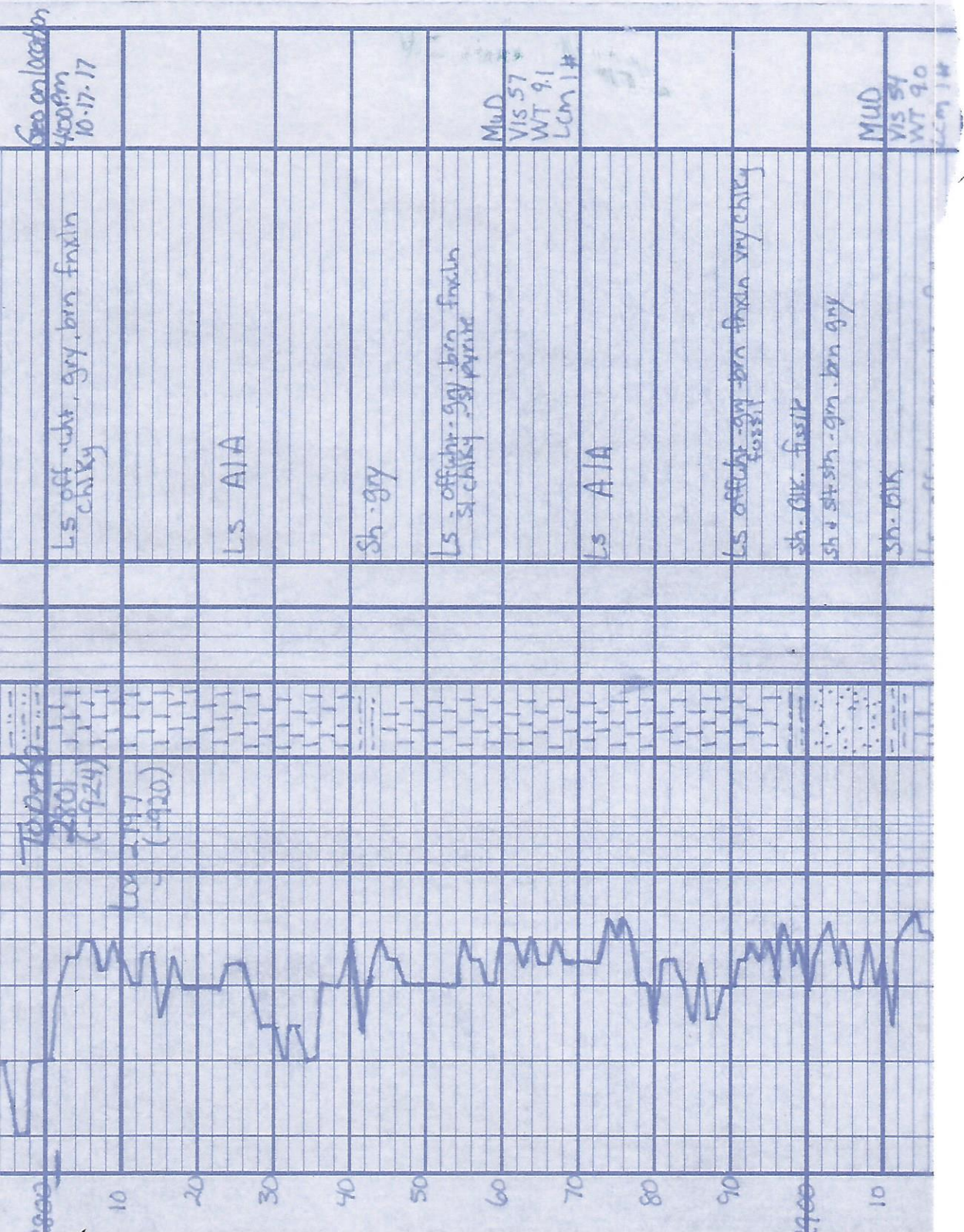
Ls off wht. gry brn finsh

sh + siltst - gry. brn

Mud
Vis 69
WT 90
LC 94.15

Base
90
96
200

2750
60
70
80
90



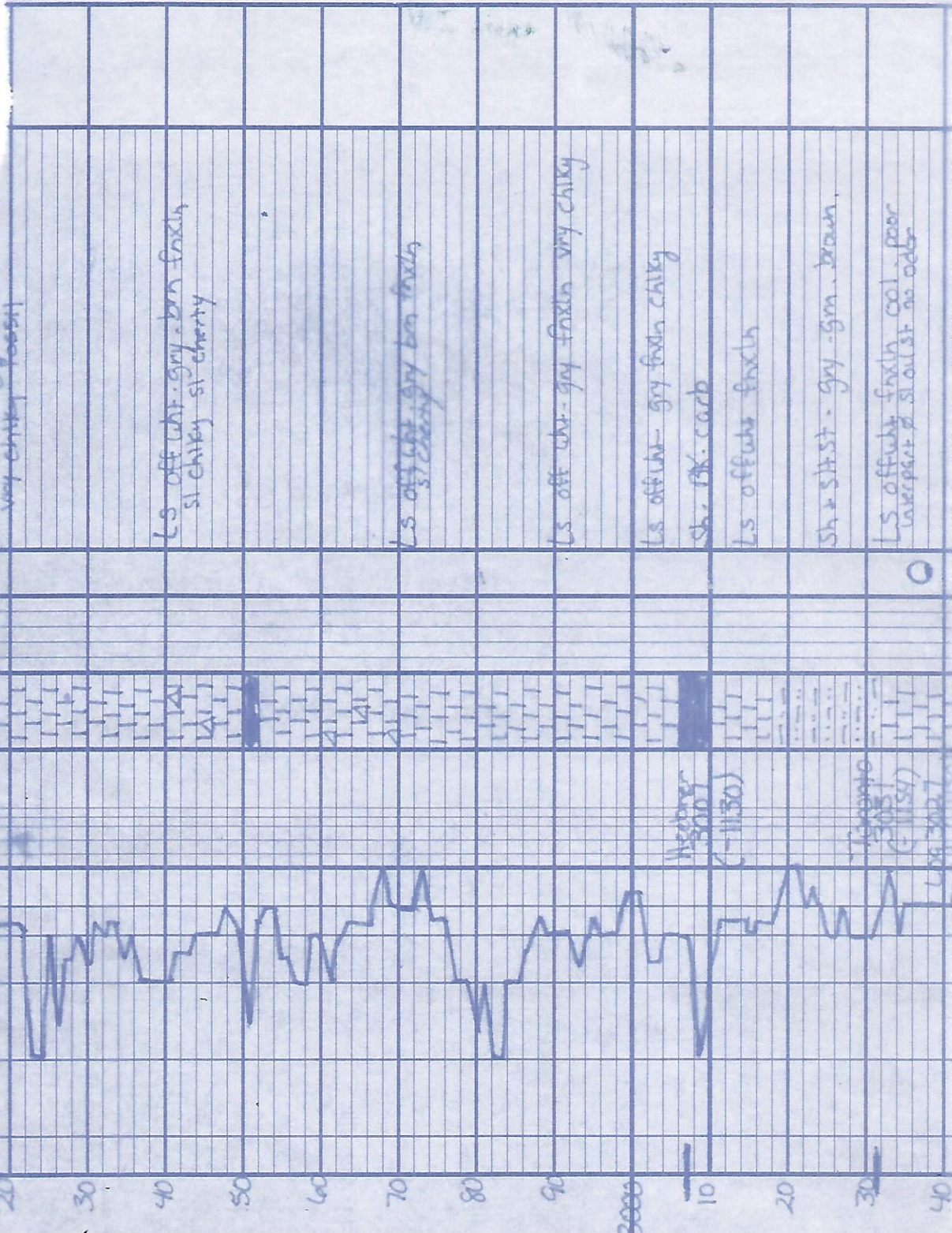
Geo. on location

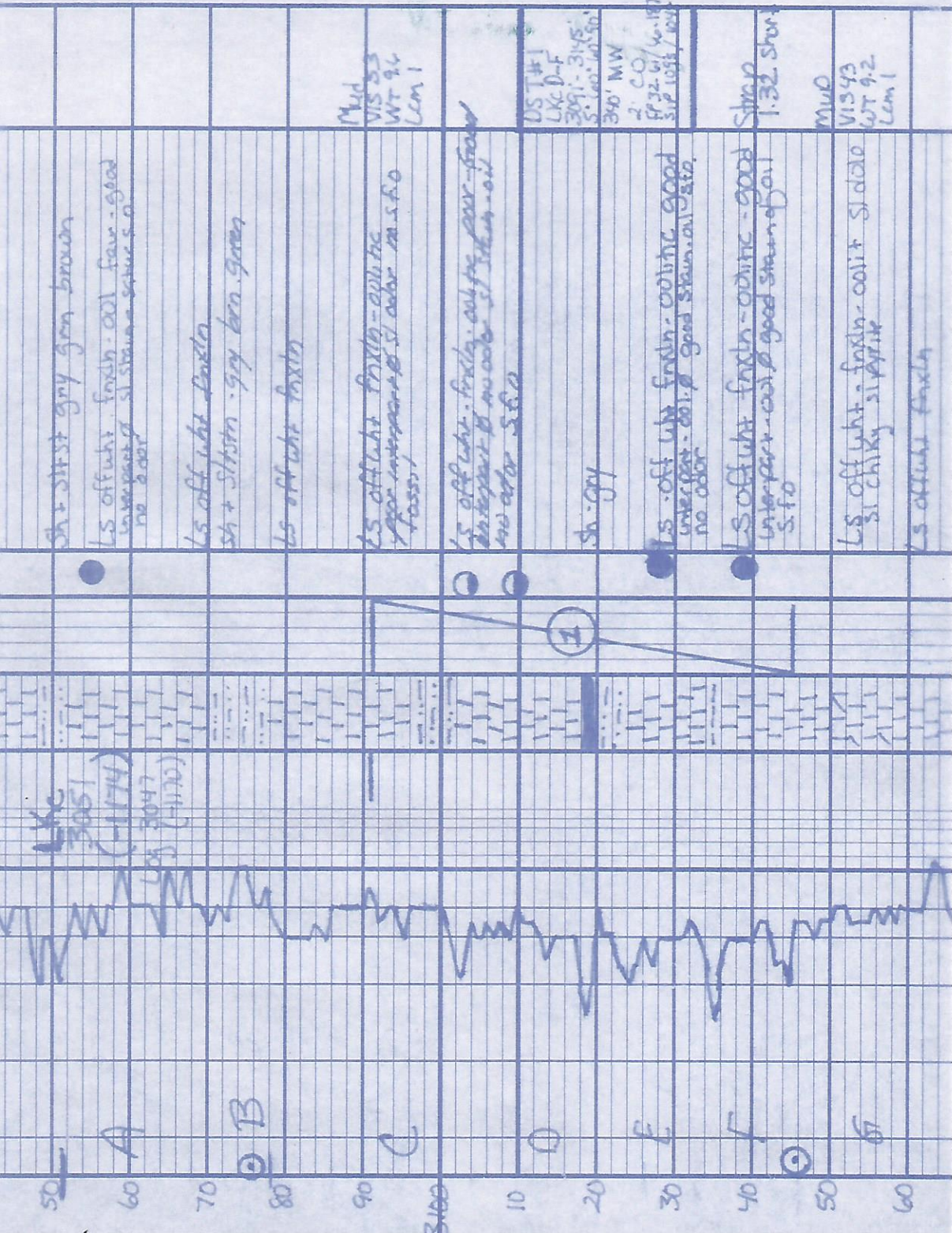
4:00 PM
10-17-17

MUD
VIS 57
WT 9.1
LCM 1#

MUD
VIS 54
WT 9.0
LCM 1#

10:00
9:20
(9:24)
9:17
(9:20)



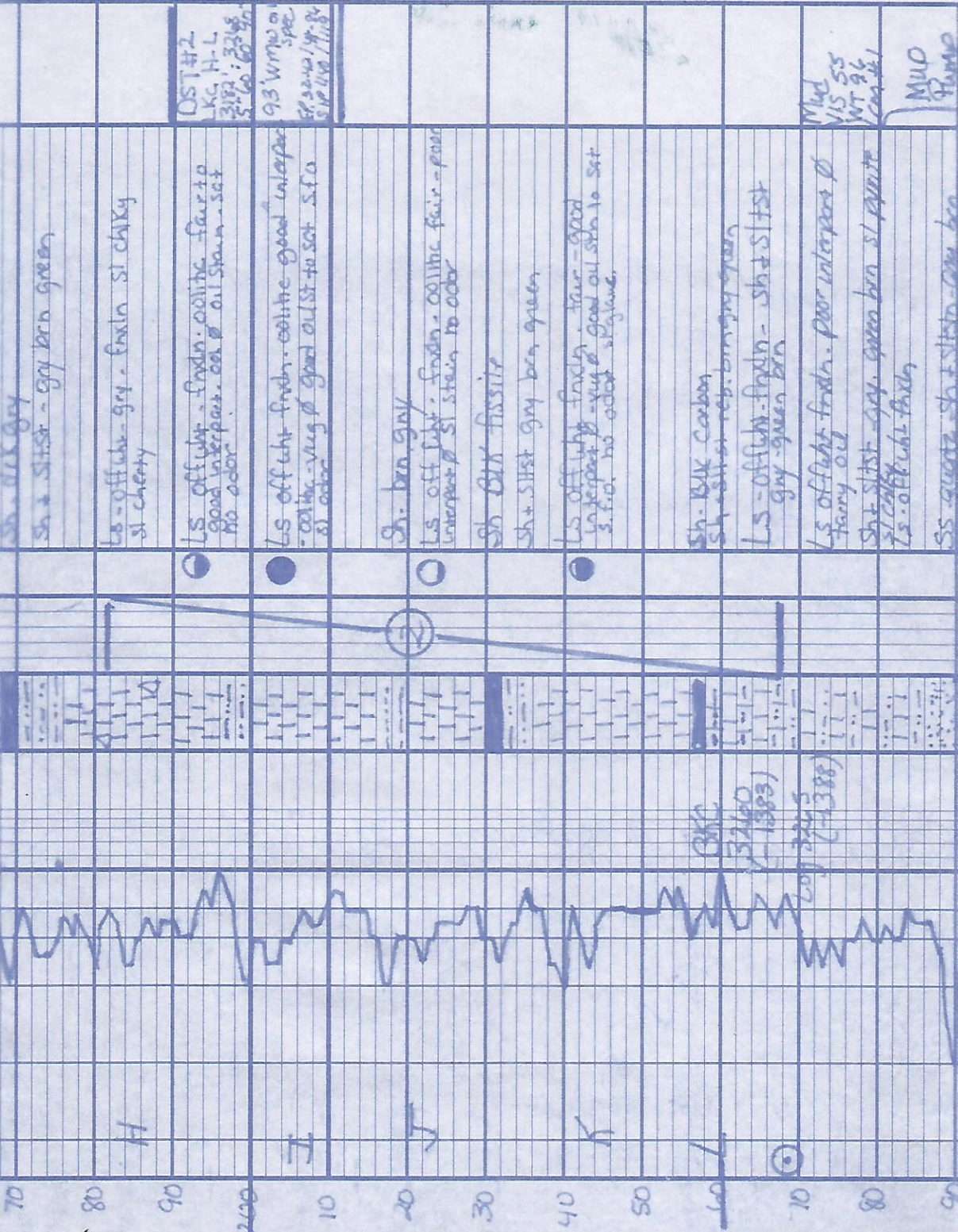


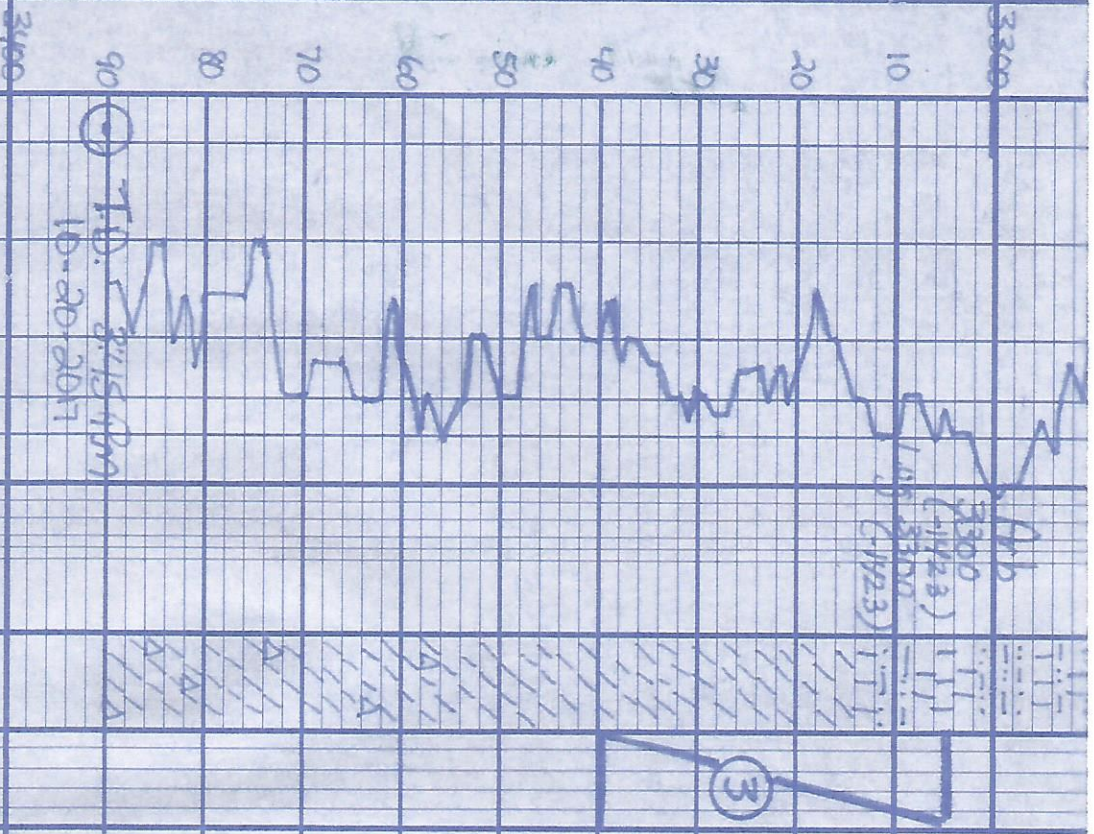
Mud
VIS 83
WT 9.2
Lcm 1

DST #1
LXC D-F
3091 - 3145
5' 100' 10' 50'
340' MW
2' CO
PP 32.6 / 4.187
SIP 1058 / 1021

Shrap
1.32 shor

Mud
VIS 93
WT 9.2
Lcm 1





15 - off wh - gray fash

St + short = gray hair - good
well - dark - call

15 off wh - gray fash

St + short - gray hair - good
well - dark - call

15 off wh - gray fash

St + short = gray hair - good
well - dark - call

15 off wh - gray fash

St + short = gray hair - good
well - dark - call

15 off wh - gray fash

St + short = gray hair - good
well - dark - call

15 off wh - gray fash

St + short = gray hair - good
well - dark - call

15 off wh - gray fash

working
correctly
samples
very
muddy

DST #3

Arbucly

3305-3310

5'60" 60" 9

60' 0cm 201

60' 0cm 201

15' 0cm 201

EP 3314-38

11.11 - 11.3

Sup 1005 928

15' 0cm 201

15' 0cm 201

15' 0cm 201