

Fall & Associates

Stake and Elevation Service

P.O. Box 222

Pretty Prairie, KS. 67570

785-243-7506

Date 3-1-18

Invoice Number 0228181

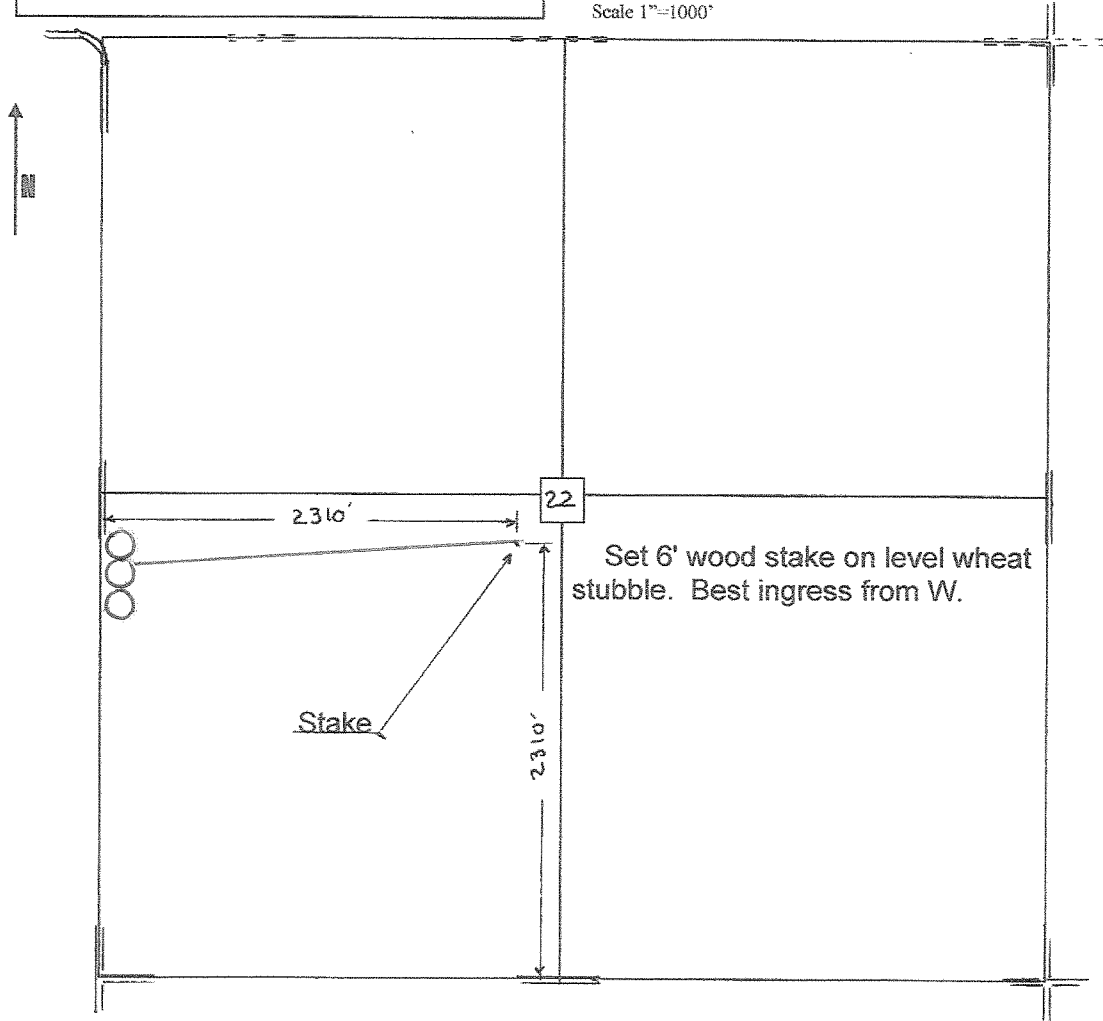
MURFIN DRILLING	1-22			Banister 'A'
Operator	Number			Farm Name
Cheyenne-KS	22	2s	37w	C NE NE SW
County-State	S	T	R	Location

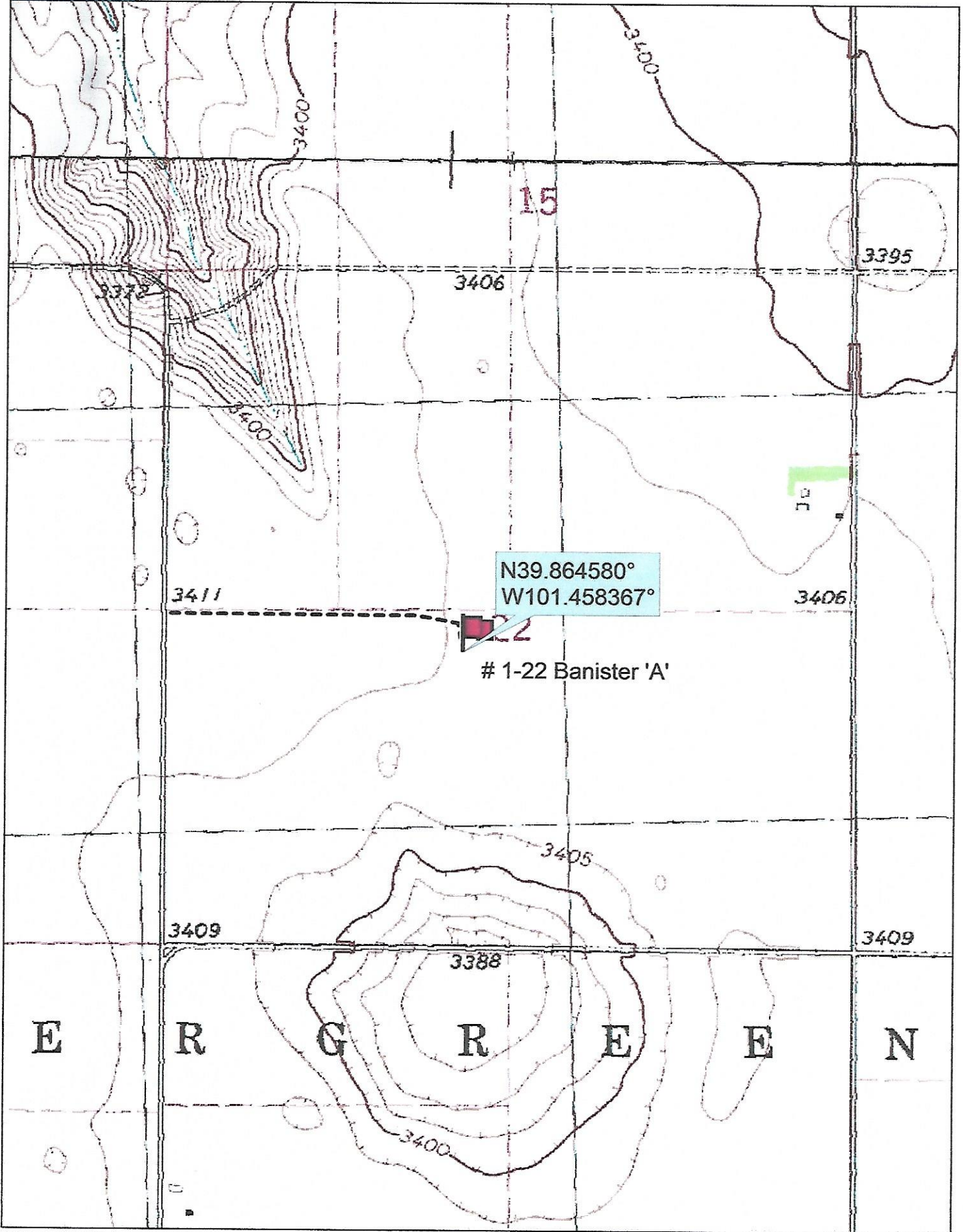
Murfin Drilling
 250 N Water
 Suite 300
 Wichita, KS. 67202

Elevation 3409 Gr.

Ordered By: Shauna

Scale 1"=1000'





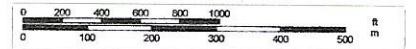
Data use subject to license.

© DeLorme. Topo North America™ 9.

www.delorme.com



Scale 1 : 12,000



1" = 1,000.0 ft

Data Zoom 13-1