

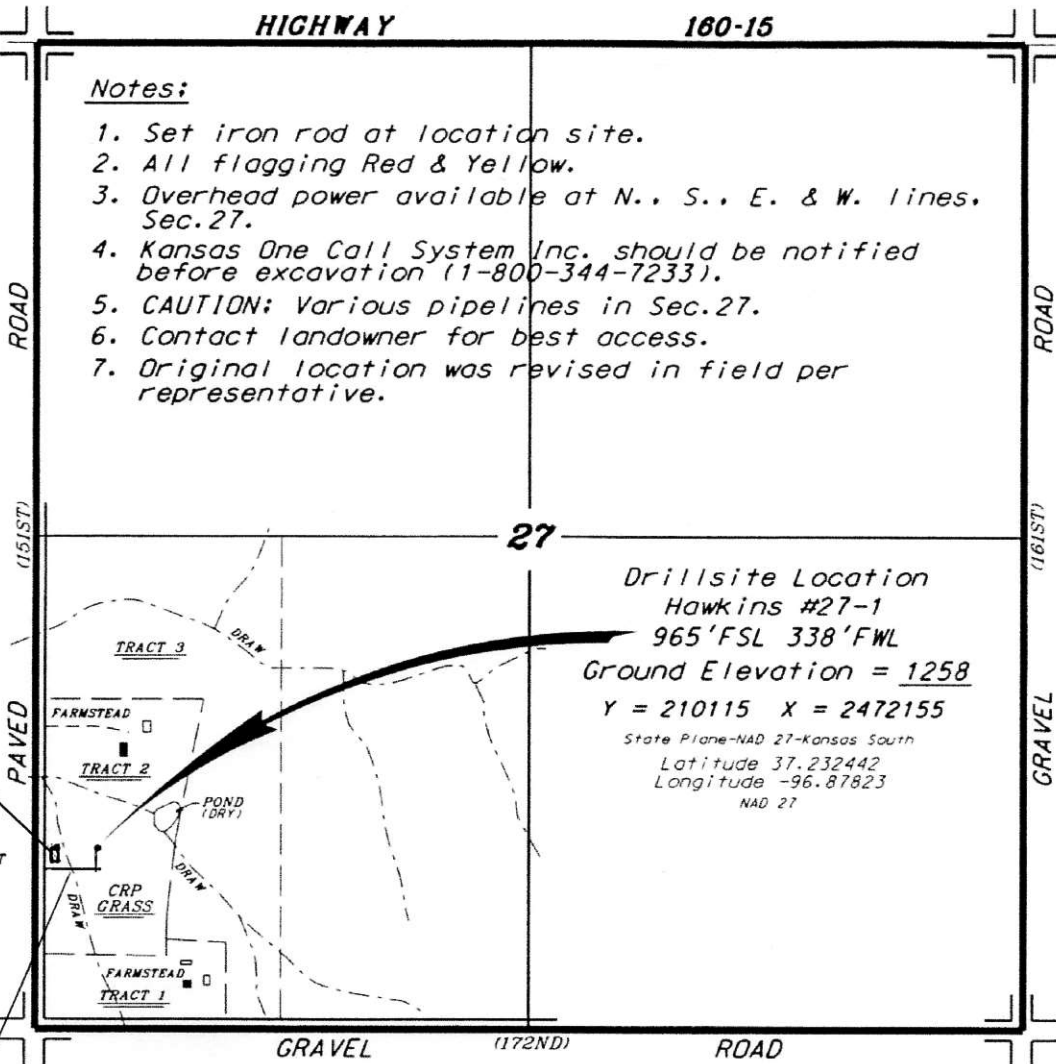
TAOS RESOURCES OPERATING COMPANY, LLC  
 HAWKINS LEASE  
 SW. 1/4, SECTION 27, T32S, R5E  
 COWLEY COUNTY, KANSAS

HIGHWAY

160-15

Notes:

1. Set iron rod at location site.
2. All flagging Red & Yellow.
3. Overhead power available at N., S., E. & W. lines. Sec. 27.
4. Kansas One Call System Inc. should be notified before excavation (1-800-344-7233).
5. CAUTION; Various pipelines in Sec. 27.
6. Contact landowner for best access.
7. Original location was revised in field per representative.



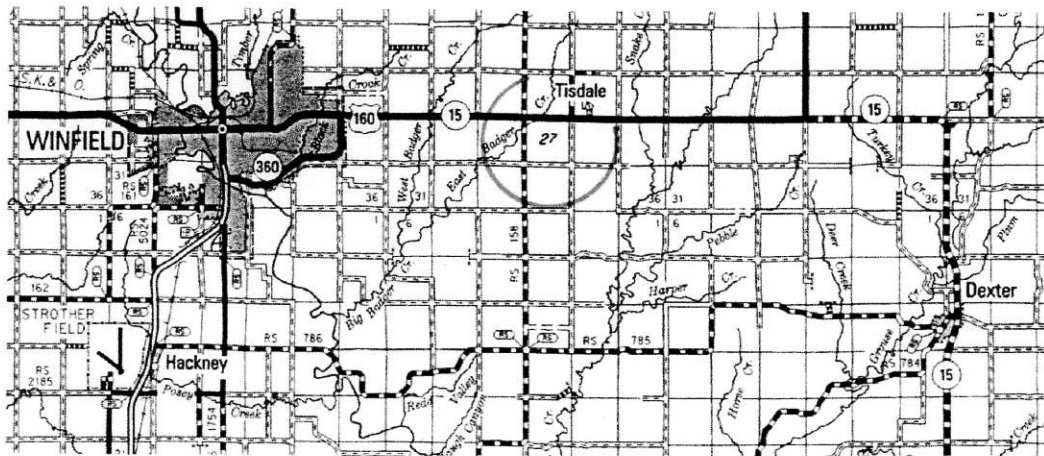
Drillsite Location  
 Hawkins #27-1  
 965'FSL 338'FWL  
 Ground Elevation = 1258  
 Y = 210115 X = 2472155  
 State Plane-NAD 27-Kansas South  
 Latitude 37.232442  
 Longitude -96.87823  
 NAD 27

Ingress and egress to location as shown on this plat is per usage only and may not be legally opened for public use. Contact landowner, tenant and county road department for access.

Tank Battery

- \*TRACT 1  
ARCHER FAMILY TRUST  
(10.0 ACRES)
- \*TRACT 2  
HENRY R. HAWKINS  
(24.6 ACRES)
- \*TRACT 3  
SEELIGER, LLC  
(45.4 ACRES)

Lease Road



Controlling data is based upon the best maps and photographs available to us and upon a regular section of land containing 840 acres.

Approximate section lines were determined using the normal standard of care of oilfield surveyors practicing in the state of Kansas. The section corners, which establish the precise section lines, were not necessarily located, and the exact location of the drillsite location in the section is not guaranteed. Therefore, the operator securing this service and accepting this plat and all other parties relying thereon agree to hold Central Kansas Oilfield Services, Inc., its officers and employees harmless from all losses, costs and expenses and said entities released from any liability from incidental or consequential damages.

Elevations derived from National Geodetic Vertical Datum.

Date March 1, 2018

**CENTRAL KANSAS OILFIELD SERVICES, INC. (620)792-1977**