



**TRILOBITE
TESTING, INC.**

DRILL STEM TEST REPORT

Prairie Fire Petroleum LLC

PO Box 38
Norton, KS 67654

ATTN: Jerry Green

24/2s/27w Decatur KS

Long Farms #1-24

Job Ticket: 63361

DST#: 1

Test Start: 2018.02.21 @ 11:10:00

GENERAL INFORMATION:

Formation: **Pollnow**

Deviated: No Whipstock: ft (KB)

Time Tool Opened: 13:25:45

Time Test Ended: 19:13:00

Interval: 3580.00 ft (KB) To 3604.00 ft (KB) (TVD)

Total Depth: 3604.00 ft (KB) (TVD)

Hole Diameter: 7.88 inches Hole Condition: Fair

Test Type: Conventional Bottom Hole (Initial)

Tester: James Winder

Unit No: 83

Reference Elevations: 2697.00 ft (KB)

2692.00 ft (CF)

KB to GR/CF: 5.00 ft

Serial #: 8017

Outside

Press@RunDepth: 284.74 psig @ 3581.00 ft (KB)

Start Date: 2018.02.21 End Date: 2018.02.21

Start Time: 11:10:05 End Time: 19:12:59

Capacity: 8000.00 psig

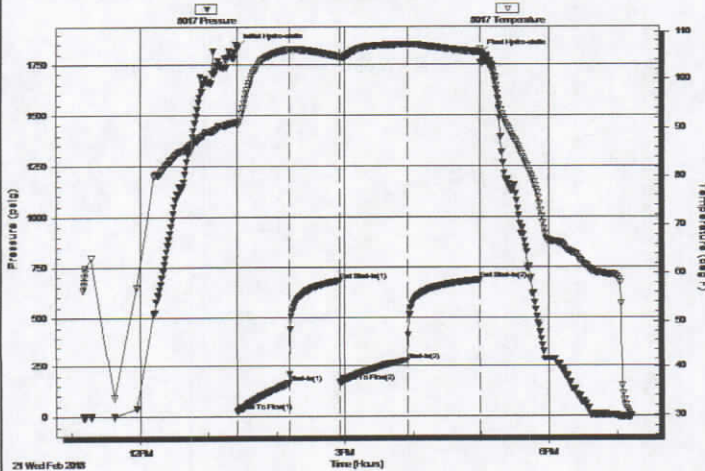
Last Calib.: 2018.02.21

Time On Btm: 2018.02.21 @ 13:25:30

Time Off Btm: 2018.02.21 @ 16:59:45

TEST COMMENT: 45 - IF: Blow built to BOB (11") at 7 1/4 min.
45 - IS: Blow back built to 1 1/2"
60 - FF: Blow built to BOB at 14 1/4 min.
60 - FS: Blow back built to 2"

Pressure vs. Time



PRESSURE SUMMARY

Time (Min.)	Pressure (psig)	Temp (deg F)	Annotation
0	1837.39	91.15	Initial Hydro-static
1	23.75	90.55	Open To Flow (1)
46	162.83	106.29	Shut-In(1)
90	682.79	104.67	End Shut-In(1)
91	167.13	104.47	Open To Flow (2)
150	284.74	107.27	Shut-In(2)
214	686.71	105.70	End Shut-In(2)
215	1802.56	105.72	Final Hydro-static

Recovery

Length (ft)	Description	Volume (bbl)
400.00	SMCW w /trace oil 93%w , 7%m	5.61
125.00	SO/MCW 50%w , 37%m, 8%g, 5%o	1.75
45.00	SWMC/O 93%o, 3%m, 2%w , 2%g	0.63
20.00	CO 95%o, 5%g	0.28
0.00	GIP = 165'	0.00

Gas Rates

Choke (inches)	Pressure (psig)	Gas Rate (Mcf/d)



**TRILOBITE
TESTING, INC.**

DRILL STEM TEST REPORT

FLUID SUMMARY

Prairie Fire Petroleum LLC

PO Box 38
Norton, KS 67654

ATTN: Jerry Green

24/2s/27w Decatur KS

Long Farms #1-24

Job Ticket: 63361

DST#: 1

Test Start: 2018.02.21 @ 11:10:00

Mud and Cushion Information

Mud Type: Gel Chem

Mud Weight: 10.00 lb/gal

Viscosity: 55.00 sec/qt

Water Loss: 7.60 in³

Resistivity: ohm.m

Salinity: 2500.00 ppm

Filter Cake: 1.00 inches

Cushion Type:

Cushion Length:

Cushion Volume:

Gas Cushion Type:

Gas Cushion Pressure:

Oil API:

35.6 deg API

Water Salinity:

115000 ppm

ft

bbbl

psig

Recovery Information

Recovery Table

Length ft	Description	Volume bbl
400.00	SMCW w/trace oil 93%w, 7%m	5.611
125.00	SO/MCW 50%w, 37%m, 8%g, 5%o	1.753
45.00	SWMC/O 93%o, 3%m, 2%w, 2%g	0.631
20.00	CO 95%o, 5%g	0.281
0.00	GIP = 165'	0.000

Total Length: 590.00 ft Total Volume: 8.276 bbl

Num Fluid Samples: 0

Num Gas Bombs: 0

Serial #:

Laboratory Name:

Laboratory Location:

Recovery Comments: Gravity = 32.6 api @ 30 deg F Corrected Gravity = 35.6 api

RW = .181 ohms @ 28.1 deg F Chlorides = 115,000 ppm

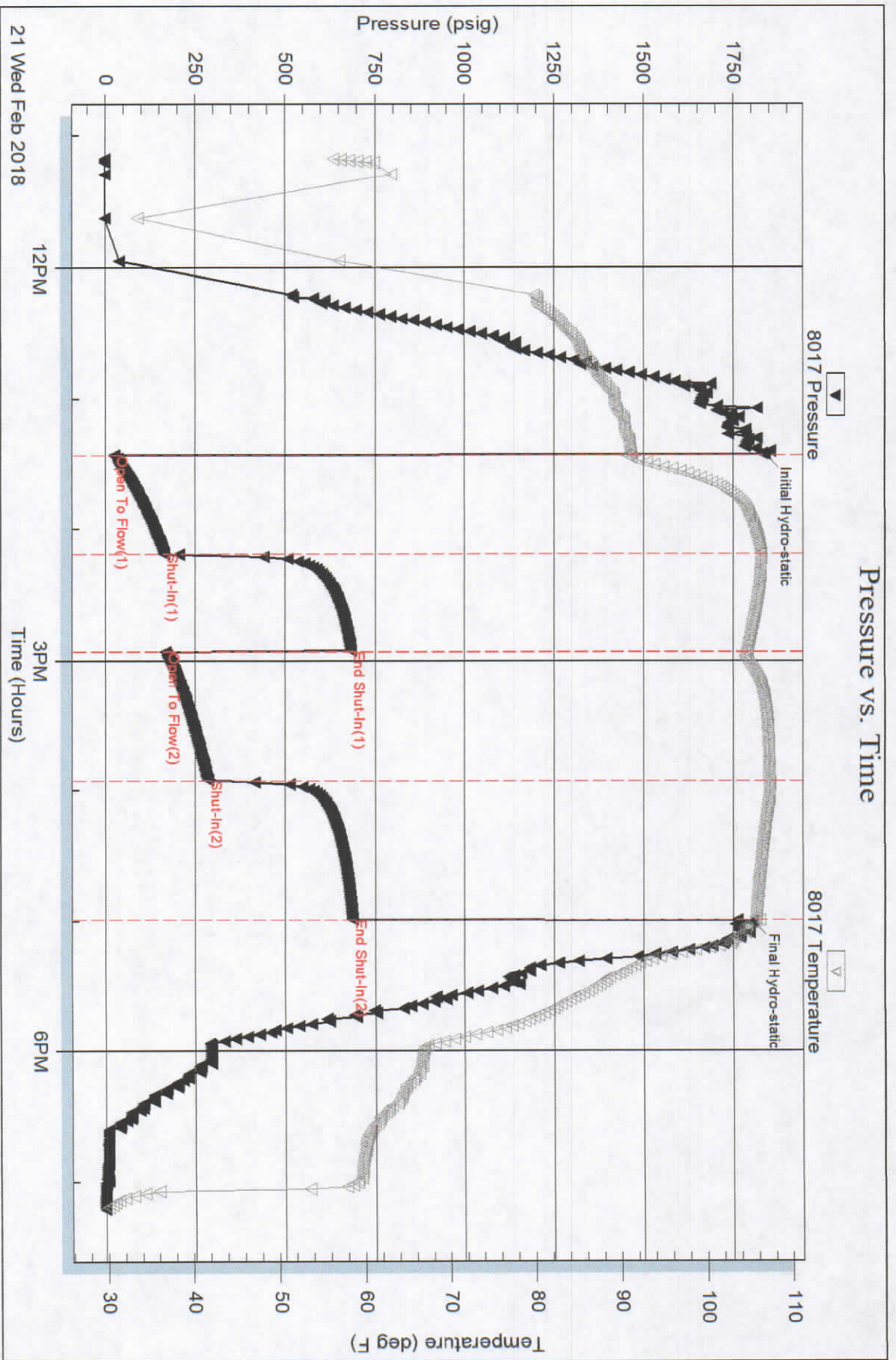
H2S gas - betw een 10 to 15 ppm at top 30 to 40 ppm at bottom

Serial #: 8017

Outside Paire Fire Petroleum LLC

Long Farms #1-24

DST Test Number: 1



Tribble Testing, Inc

Ref. No: 63361

Printed: 2018.02.21 @ 21:48:40

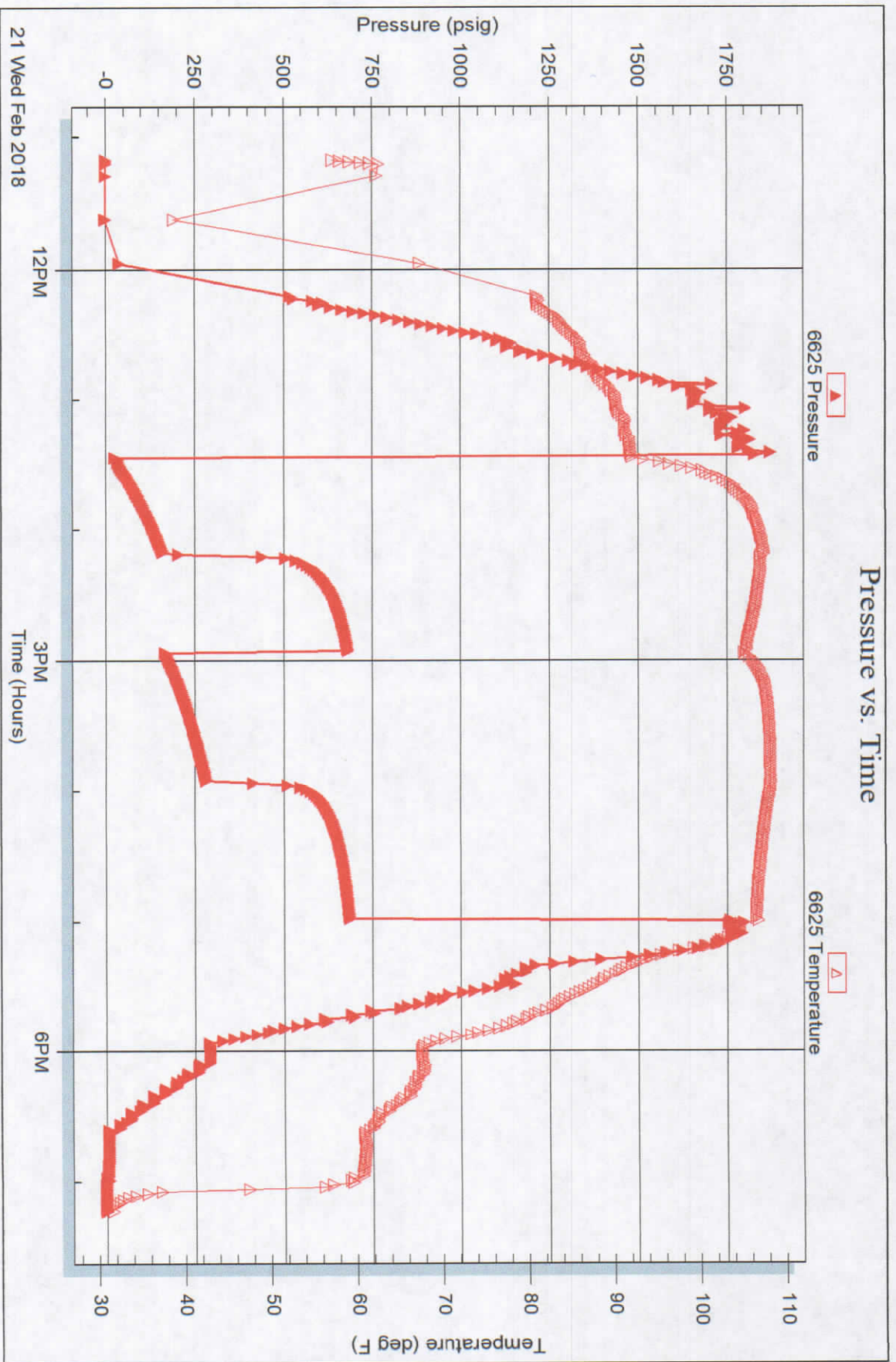
Serial #: 6625

Inside

Prairie Fire Petroleum LLC

Long Farms #1-24

DST Test Number: 1





**TRILOBITE
TESTING, INC.**

DRILL STEM TEST REPORT

Prairie Fire Petroleum LLC

PO Box 38
Norton, KS 67654

ATTN: Jerry Green

24/2s/27w Decatur KS

Long Farms #1-24

Job Ticket: 63362

DST#: 2

Test Start: 2018.02.22 @ 16:57:00

GENERAL INFORMATION:

Formation: **Toronto - LKC "A"**

Deviated: No Whipstock: ft (KB)

Time Tool Opened: 18:59:45

Time Test Ended: 22:57:45

Test Type: Conventional Straddle (Reset)

Tester: James Winder

Unit No: 83

Interval: **3524.00 ft (KB) To 3572.00 ft (KB) (TVD)**

Total Depth: 3819.00 ft (KB) (TVD)

Hole Diameter: 7.88 inches Hole Condition: Fair

Reference Elevations: 2697.00 ft (KB)

2692.00 ft (CF)

KB to GR/CF: 5.00 ft

Serial #: 8017 Outside

Press@RunDepth: 21.42 psig @ 3525.00 ft (KB)

Start Date: 2018.02.22

End Date: 2018.02.22

Capacity: 8000.00 psig

Last Calib.: 2018.02.22

Start Time: 16:57:05

End Time: 22:57:44

Time On Btm: 2018.02.22 @ 18:59:30

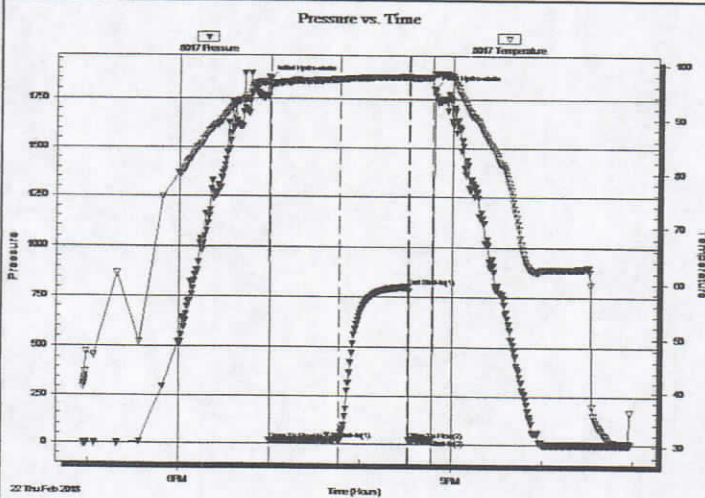
Time Off Btm: 2018.02.22 @ 20:48:00

TEST COMMENT: 45 - IF: Blow built to just over 1", died back to surface blow at close

45 - IS: No blow back

15 - FF: No blow

Pulled tool



PRESSURE SUMMARY

Time (Min.)	Pressure (psig)	Temp (deg F)	Annotation
0	1844.64	96.51	Initial Hydro-static
1	13.67	95.66	Open To Flow (1)
47	21.42	97.18	Shut-In(1)
92	802.14	97.65	End Shut-In(1)
93	20.75	97.39	Open To Flow (2)
108	22.53	97.63	Shut-In(2)
109	1795.56	98.22	Final Hydro-static

Recovery

Length (ft)	Description	Volume (bbl)
15.00	Mud 100%	0.21

* Recovery from multiple tests

Gas Rates

	Choke (inches)	Pressure (psig)	Gas Rate (Mcf/d)



TRILOBITE
TESTING, INC.

DRILL STEM TEST REPORT

FLUID SUMMARY

Prairie Fire Petroleum LLC

24/2s/27w Decatur KS

PO Box 38
Norton, KS 67654

Long Farms #1-24

Job Ticket: 63362

DST#: 2

ATTN: Jerry Green

Test Start: 2018.02.22 @ 16:57:00

Mud and Cushion Information

Mud Type: Gel Chem

Cushion Type:

Oil API:

deg API

Mud Weight: 10.00 lb/gal

Cushion Length:

ft

Water Salinity:

ppm

Viscosity: 51.00 sec/qt

Cushion Volume:

bbbl

Water Loss: 7.59 in³

Gas Cushion Type:

Resistivity: ohm.m

Gas Cushion Pressure:

psig

Salinity: 4000.00 ppm

Filter Cake: 1.00 inches

Recovery Information

Recovery Table

Length ft	Description	Volume bbl
15.00	Mud 100%	0.210

Total Length: 15.00 ft Total Volume: 0.210 bbl

Num Fluid Samples: 0

Num Gas Bombs: 0

Serial #:

Laboratory Name:

Laboratory Location:

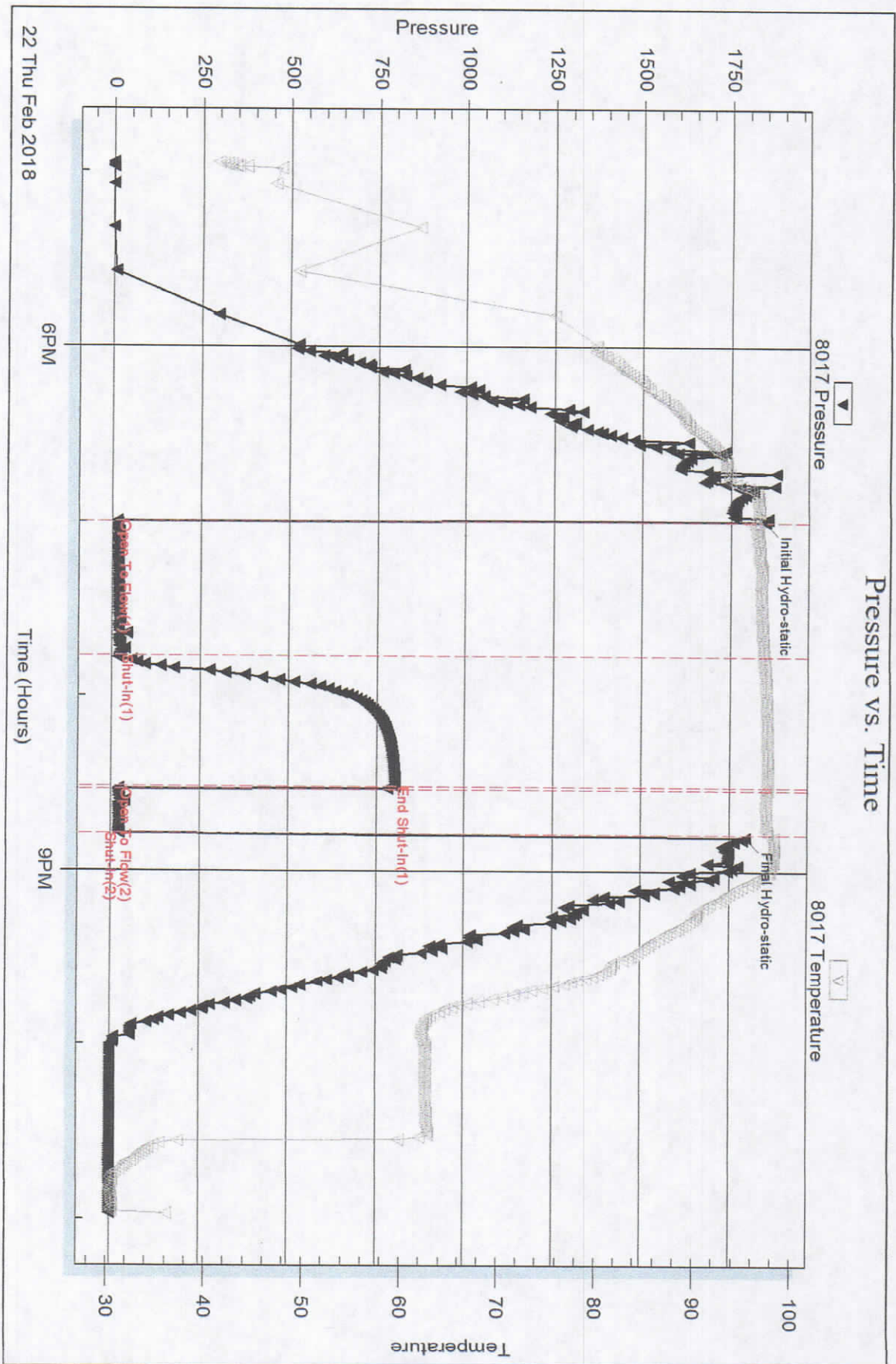
Recovery Comments:

Serial #: 8017

Outside Prairie Fire Petroleum LLC

Long Farms #1-24

DST Test Number: 2



Trilobite Testing, Inc

Ref. No: 63362

Printed: 2018.02.23 @ 09:40:24

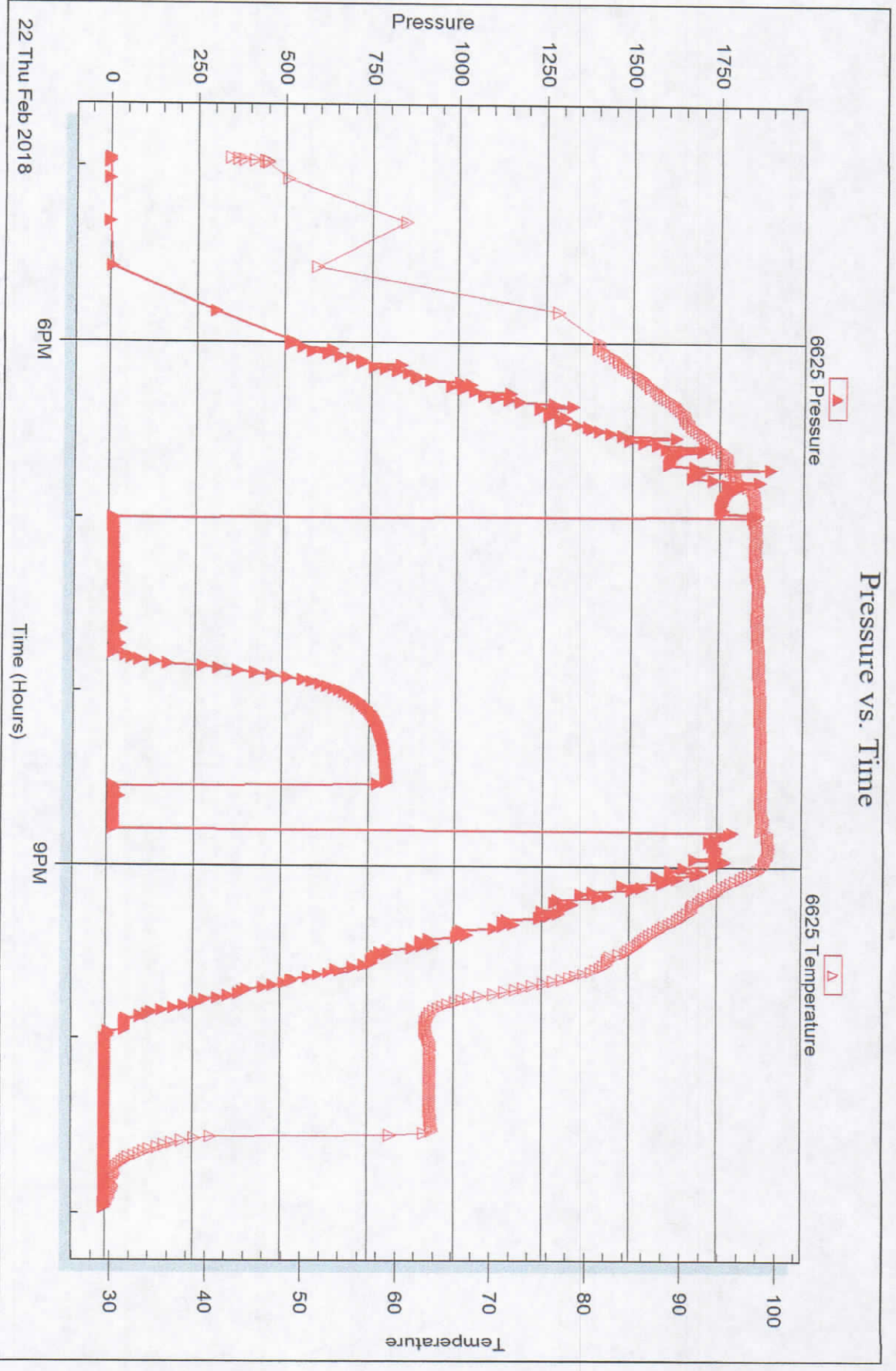
Serial #: 6625

Inside

Prairie Fire Petroleum LLC

Long Farms #1-24

DST Test Number: 2



Trioblite Testing, Inc

Ref. No: 63362

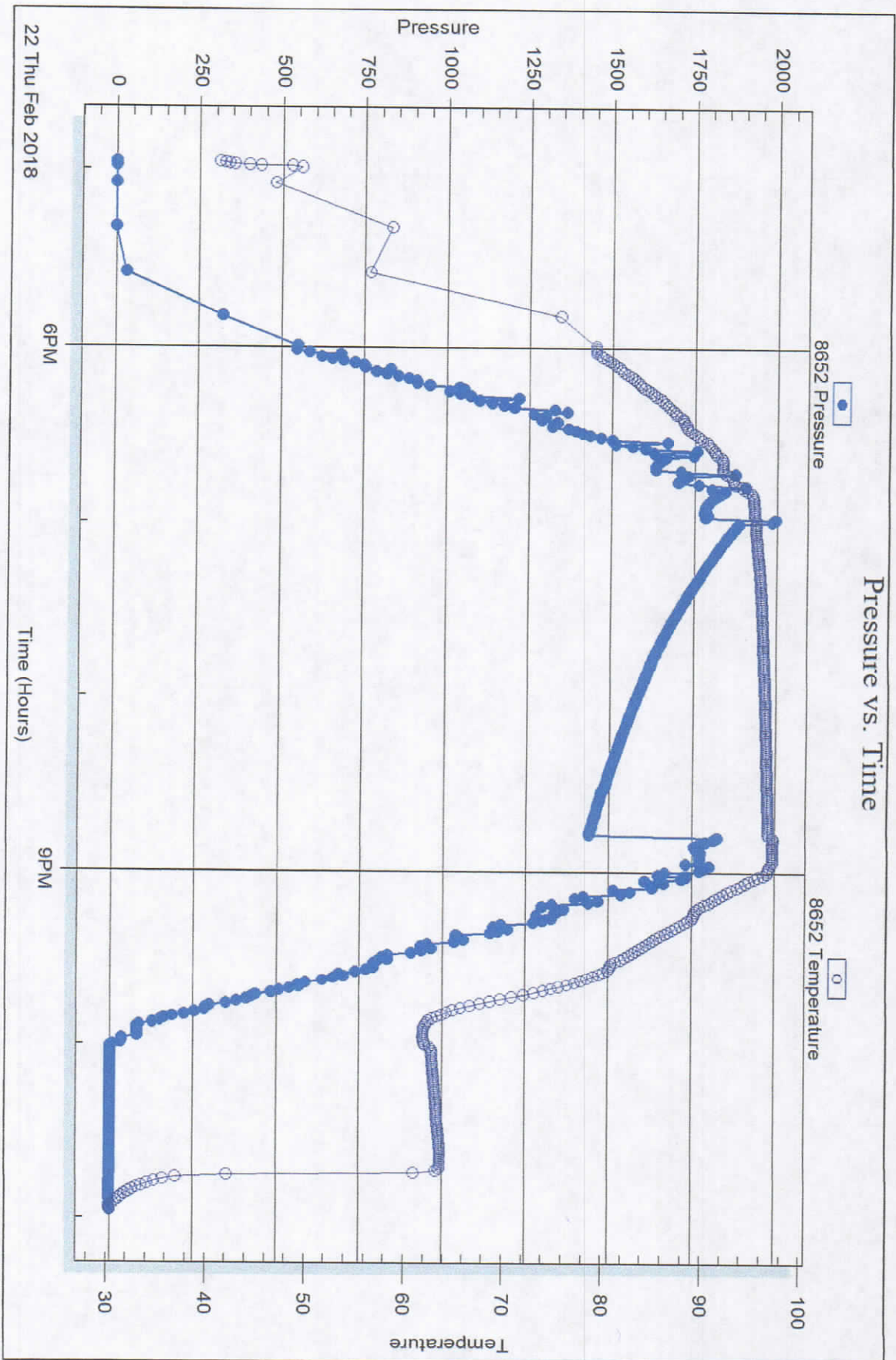
Printed: 2018.02.23 @ 09:40:25

Serial #: 8652

Below (Stratified) Fire Petroleum LLC

Long Farms #1-24

DST Test Number: 2





**TRILOBITE
TESTING, INC.**

DRILL STEM TEST REPORT

Prairie Fire Petroleum LLC

PO Box 38
Norton, KS 67654

ATTN: Jerry Green

24/2s/27w Decatur KS

Long Farms #1-24

Job Ticket: 63363

DST#: 3

Test Start: 2018.02.22 @ 23:25:00

GENERAL INFORMATION:

Formation: **LKC "C"**

Deviated: No Whipstock: ft (KB)

Time Tool Opened: 01:16:00

Time Test Ended: 08:01:45

Interval: **3603.00 ft (KB) To 3620.00 ft (KB) (TVD)**

Total Depth: 3819.00 ft (KB) (TVD)

Hole Diameter: 7.88 inches Hole Condition: Fair

Test Type: Conventional Straddle (Reset)

Tester: James Winder

Unit No: 83

Reference Elevations: 2697.00 ft (KB)

2692.00 ft (CF)

KB to GR/CF: 5.00 ft

Serial #: **8017** Outside

Press@RunDepth: 82.99 psig @ 3604.00 ft (KB)

Start Date: 2018.02.22

End Date:

2018.02.23

Capacity: 8000.00 psig

Last Calib.: 2018.02.23

Start Time: 23:25:05

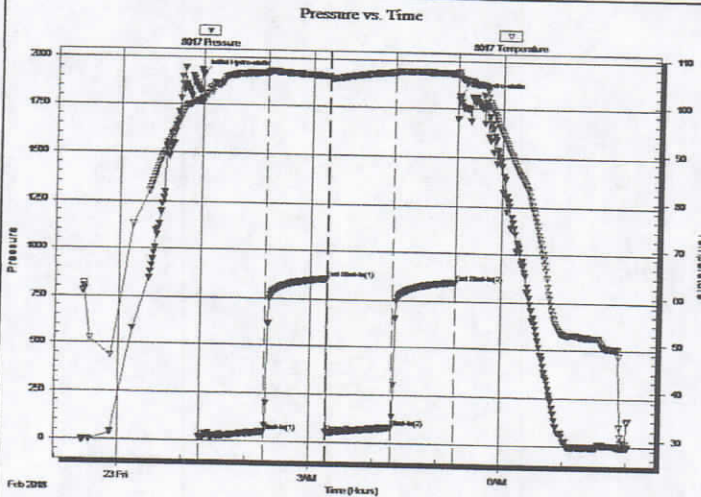
End Time:

08:01:45

Time On Btm: 2018.02.23 @ 01:15:45

Time Off Btm: 2018.02.23 @ 05:18:00

TEST COMMENT: 60 - IF: Blow built to 8" (Diesel in bucket)
60 - IS: No blow back
60 - FF: Blow built to 4 1/4"
60 - FS: No blow back



PRESSURE SUMMARY

Time (Min.)	Pressure (psig)	Temp (deg F)	Annotation
0	1912.06	100.69	Initial Hydro-static
1	17.43	100.14	Open To Flow (1)
62	50.48	106.51	Shut-In(1)
120	852.80	105.97	End Shut-In(1)
121	50.78	105.63	Open To Flow (2)
182	82.99	106.95	Shut-In(2)
241	845.55	106.89	End Shut-In(2)
243	1818.02	106.72	Final Hydro-static

Recovery

Length (ft)	Description	Volume (bbl)
145.00	SMCW w /trace oil 93%w , 7%m	2.03

* Recovery from multiple tests

Gas Rates

	Choke (inches)	Pressure (psig)	Gas Rate (Mcf/d)



**TRILOBITE
TESTING, INC.**

DRILL STEM TEST REPORT

FLUID SUMMARY

Prairie Fire Petroleum LLC

24/2s/27w Decatur KS

PO Box 38
Norton, KS 67654

Long Farms #1-24

ATTN: Jerry Green

Job Ticket: 63363

DST#: 3

Test Start: 2018.02.22 @ 23:25:00

Mud and Cushion Information

Mud Type: Gel Chem	Cushion Type:	Oil API:	deg API
Mud Weight: 10.00 lb/gal	Cushion Length: ft	Water Salinity:	ppm
Viscosity: 51.00 sec/qt	Cushion Volume: bbl		
Water Loss: 7.59 in ³	Gas Cushion Type:		
Resistivity: ohm.m	Gas Cushion Pressure: psig		
Salinity: 4000.00 ppm			
Filter Cake: 1.00 inches			

Recovery Information

Recovery Table

Length ft	Description	Volume bbl
145.00	SMCW w/trace oil 93%w, 7%m	2.034

Total Length: 145.00 ft Total Volume: 2.034 bbl

Num Fluid Samples: 0 Num Gas Bombs: 0 Serial #:

Laboratory Name: Laboratory Location:

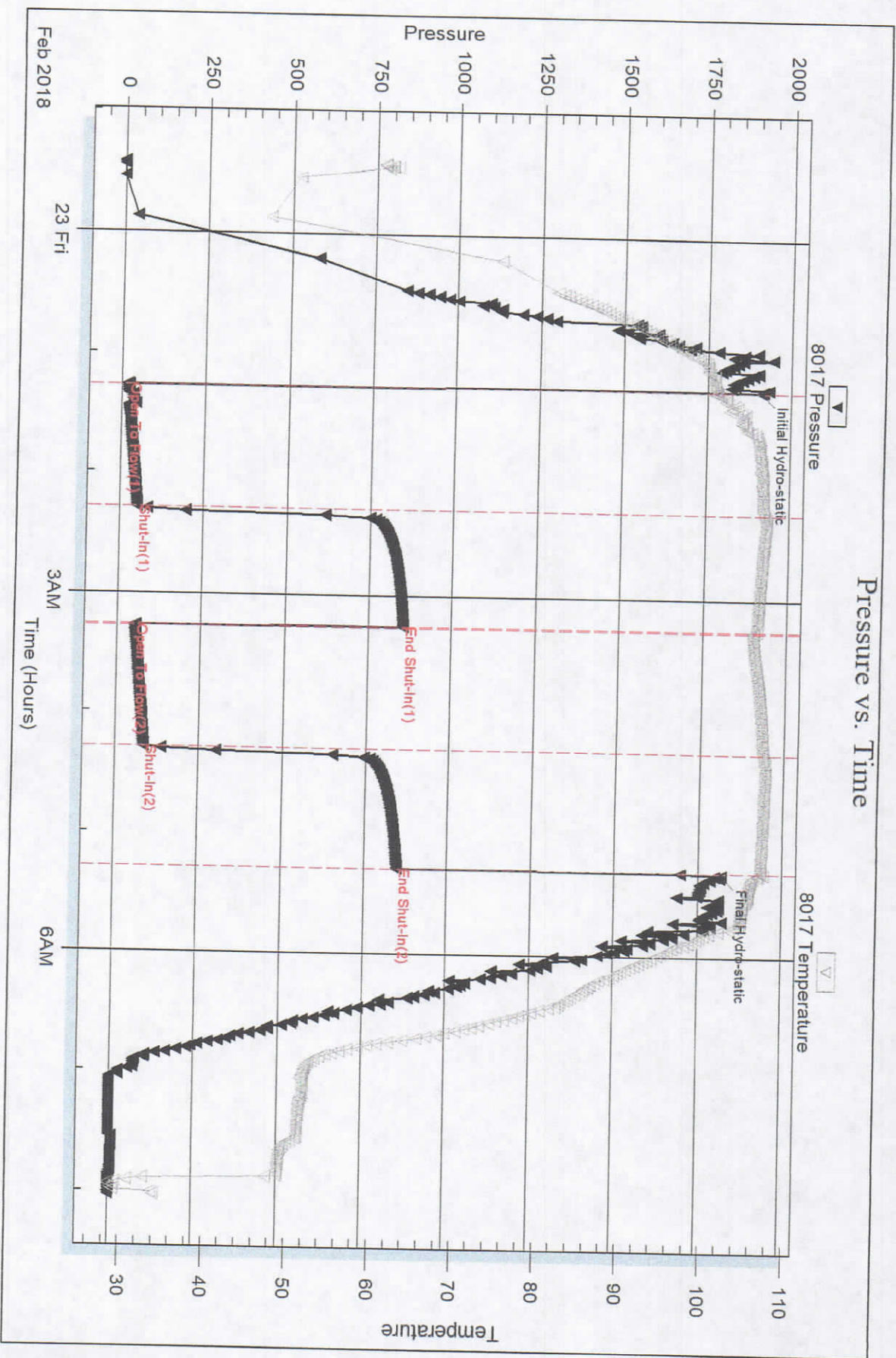
Recovery Comments: RW = .195 ohms @ 22.7 deg F
Chlorides = 115,000 ppm

Serial #: 8017

Outside Prairie Fire Petroleum LLC

Long Farms #1-24

DST Test Number: 3



Trilobe Testing, Inc

Ref. No: 63363

Printed: 2018.02.23 @ 09:37:16

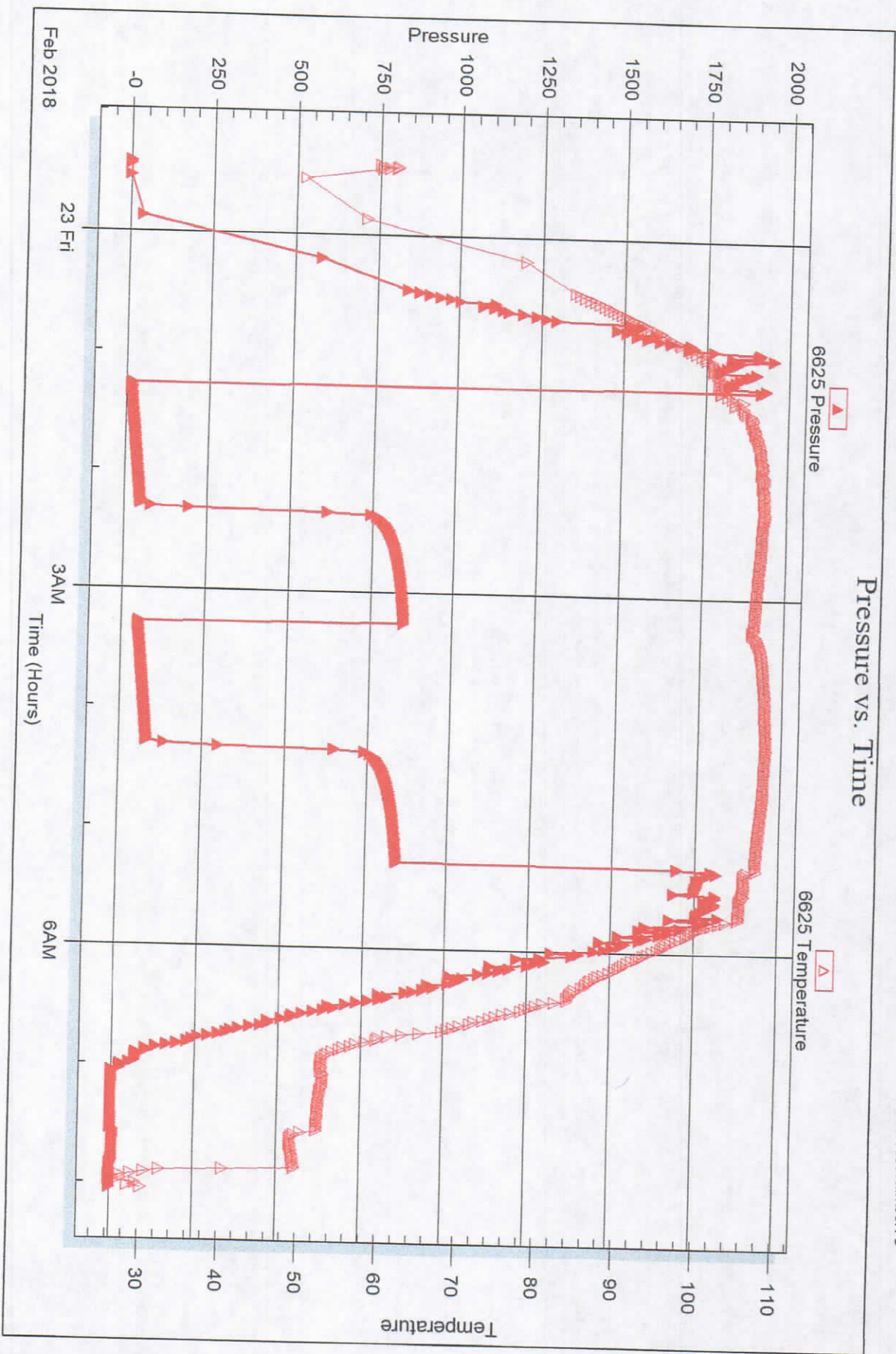
Serial #: 6625

Inside

Prairie Fire Petroleum LLC

Long Farms #1-24

DST Test Number: 3



Trilobite Testing, Inc

Ref. No: 63363

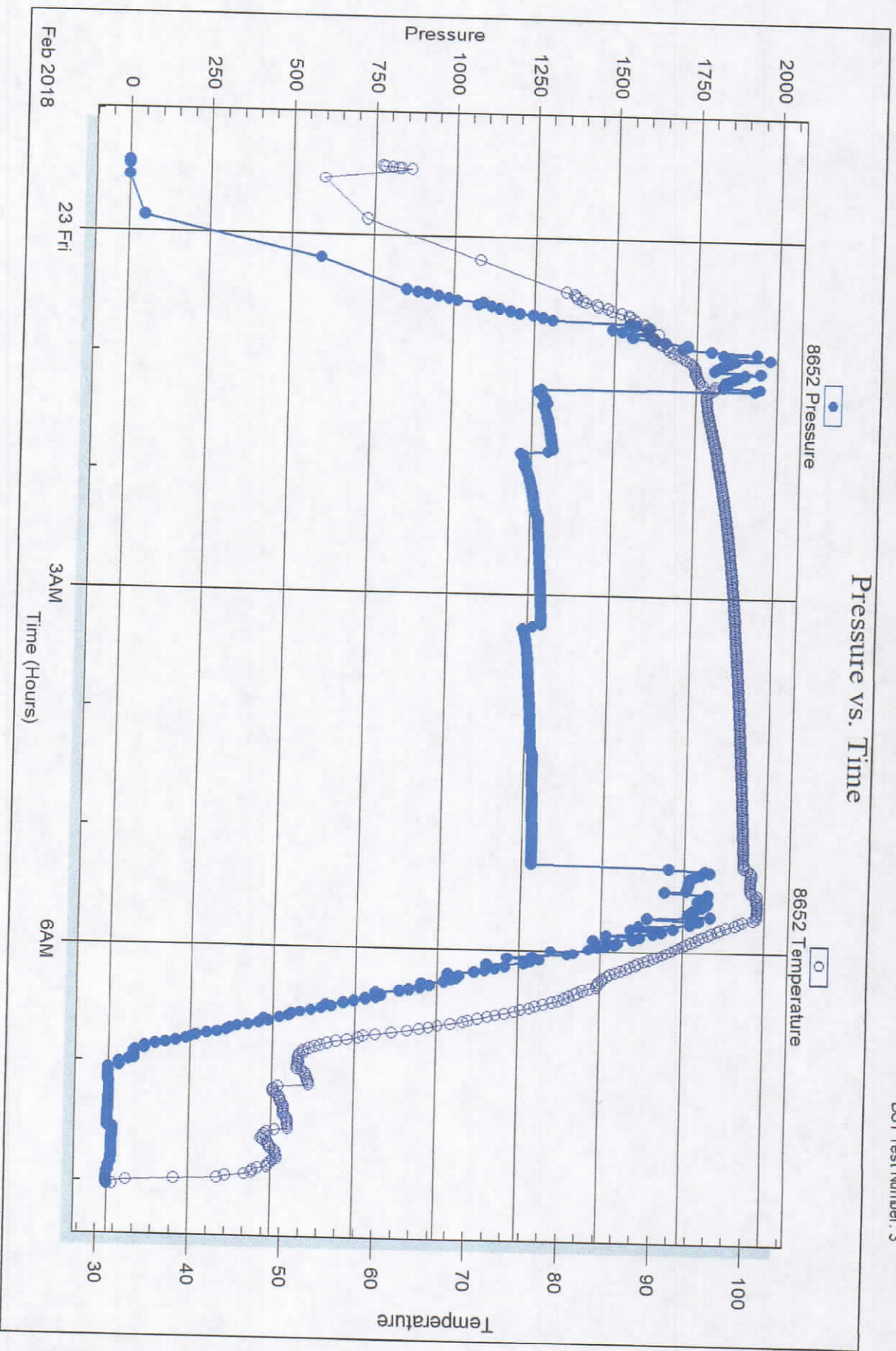
Printed: 2018.02.23 @ 09:37:16

Serial #: 8652

Below (Stratified) Fire Petroleum LLC

Long Farms #1-24

DST Test Number: 3



Triobite Testing, Inc

Ref. No: 63363

Printed: 2018.02.23 @ 09:37:16