



TRILOBITE TESTING, INC.

DRILL STEM TEST REPORT

Berexco LLC
 2020 N. Bramblewood
 Wichita, KS 67206
 ATTN: Bryan Bynog

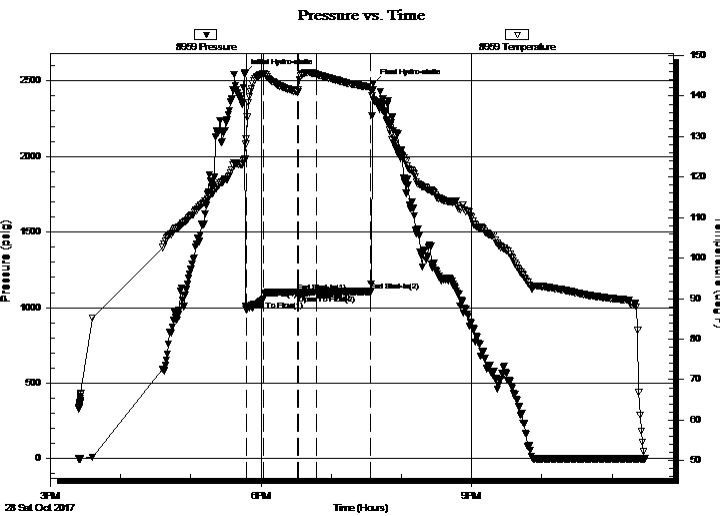
9 -3S-35W Rawlins Co
Gerald # 1-9
 Job Ticket: 63164 **DST#: 2**
 Test Start: 2017.10.28 @ 15:24:00

GENERAL INFORMATION:

Formation: **Cherokee**
 Deviated: No Whipstock: ft (KB)
 Test Type: Conventional Bottom Hole (Reset)
 Time Tool Opened: 17:47:10 Tester: Martine Salinas
 Time Test Ended: 23:28:39 Unit No: 82
 Interval: **4630.00 ft (KB) To 4691.00 ft (KB) (TVD)** Reference Elevations: 3225.00 ft (KB)
 Total Depth: 4691.00 ft (KB) (TVD) 3217.00 ft (CF)
 Hole Diameter: 7.88 inches Hole Condition: Fair KB to GR/CF: 8.00 ft

Serial #: 8959 Inside
 Press@RunDepth: 1103.97 psig @ 4631.00 ft (KB) Capacity: 8000.00 psig
 Start Date: 2017.10.28 End Date: 2017.10.28 Last Calib.: 2017.10.28
 Start Time: 15:24:01 End Time: 23:28:40 Time On Btm: 2017.10.28 @ 17:46:10
 Time Off Btm: 2017.10.28 @ 19:35:50

TEST COMMENT: 15-IF- S.blow built to B.O.B (12 inches) @ 45 secs
 30-ISI- No blow
 15-FF- S.blow built to B.O.B (12 inches) @ 45 secs
 45-FSI-No blow



PRESSURE SUMMARY

Time (Min.)	Pressure (psig)	Temp (deg F)	Annotation
0	2545.55	124.39	Initial Hydro-static
1	987.16	129.54	Open To Flow (1)
16	1057.21	145.60	Shut-In(1)
46	1105.29	141.02	End Shut-In(1)
46	1086.35	141.00	Open To Flow (2)
61	1103.97	145.38	Shut-In(2)
108	1107.03	142.21	End Shut-In(2)
110	2481.87	139.15	Final Hydro-static

Recovery

Length (ft)	Description	Volume (bbl)
1711.00	MSW 4%M, 96W	19.28
749.00	WCM 15%W, 85%M	10.51

* Recovery from multiple tests

Gas Rates

Choke (inches)	Pressure (psig)	Gas Rate (Mcf/d)



**TRILOBITE
TESTING, INC.**

DRILL STEM TEST REPORT

FLUID SUMMARY

Berexco LLC
2020 N. Bramblewood
Wichita, KS 67206
ATTN: Bryan Bynog

9 -3S-35W **Rawlins Co**
Gerald # 1-9
Job Ticket: 63164 **DST#: 2**
Test Start: 2017.10.28 @ 15:24:00

Mud and Cushion Information

Mud Type: Gel Chem	Cushion Type:	Oil API:	deg API
Mud Weight: 9.00 lb/gal	Cushion Length: ft	Water Salinity:	ppm
Viscosity: 61.00 sec/qt	Cushion Volume: bbl		
Water Loss: 8.38 in ³	Gas Cushion Type:		
Resistivity: ohm.m	Gas Cushion Pressure: psig		
Salinity: 3800.00 ppm			
Filter Cake: 2.00 inches			

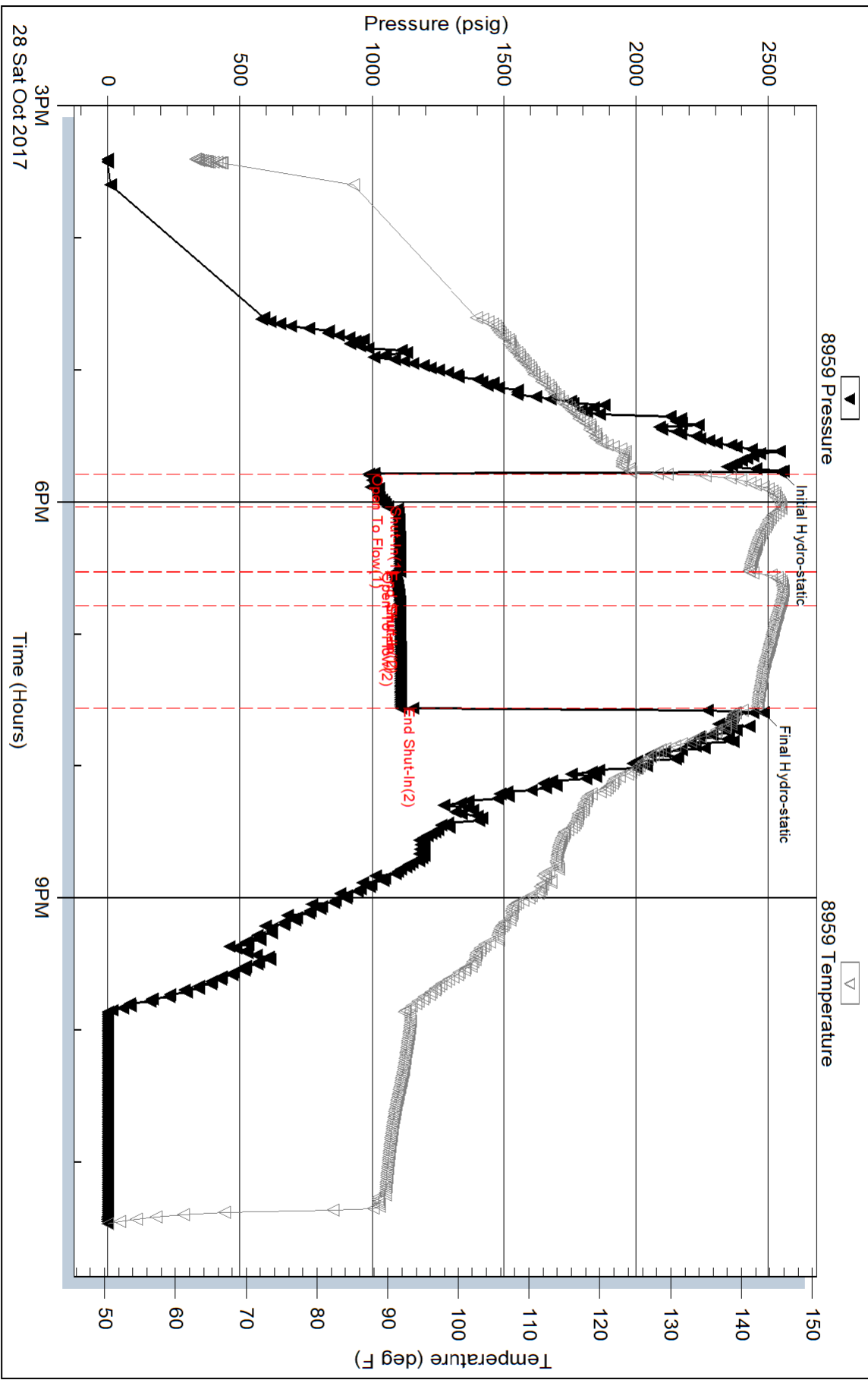
Recovery Information

Recovery Table

Length ft	Description	Volume bbl
1711.00	MSW 4%M, 96W	19.282
749.00	WCM 15%W, 85%M	10.507

Total Length: 2460.00 ft Total Volume: 29.789 bbl
Num Fluid Samples: 0 Num Gas Bombs: 0 Serial #:
Laboratory Name: Laboratory Location:
Recovery Comments: RW= .382 @ 33.5 degs = 44000 ppm

Pressure vs. Time



Serial #: 8734

Outside Berexco LLC

Gerald #1-9

DST Test Number: 2

