

# LITHOLOGY STRIP LOG

## WellSight Systems

Scale 1:240 (5"=100') Imperial  
Measured Depth Log

Well Name: Gerald #1-9  
Well Id:  
Location: SWNE Section 9 3S-35W Rawlins County, Kansas  
License Number: 15-153-21201  
Spud Date: 10-20-2017  
Surface Coordinates: 1980' FNL & 1980' FEL  
Region: Midcontinent  
Drilling Completed:

Bottom Hole  
Coordinates:  
Ground Elevation (ft): 3217  
Logged Interval (ft): 3500 To: 4850  
Formation: LKC, Pawnee, Cherokee, & mississippian  
Type of Drilling Fluid: WBM  
K.B. Elevation (ft): 3225  
Total Depth (ft): 4850

Printed by WellSight LogViewer from WellSight Systems 1-800-447-1534 www.WellSight.com

### OPERATOR

Company: Berexco, LLC.  
Address: 2020 N. Bramblewood  
Wichita, Kansas 67206

### GEOLOGIST





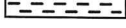
Name: William B. Bynog  
Company:  
Address: P.O.Box 687  
Pinecliffe, Co. 80471


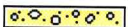



### LOG TOPS



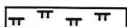

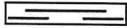
### DSTs


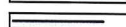

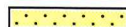

### Comments

### ROCK TYPES

 Anhy  
 Bent  
 Brec  
 Cht  
 Clyst

 Coal  
 Congl  
 Dol  
 Gyp  
 Igne

 Lmst  
 Meta  
 Mrlst  
 Salt  
 Shale

 Shcol  
 Shgy  
 Sltst  
 Ss  
 Till

### ACCESSORIES

#### MINERAL

- Anhy
- Arggrn
- Arg
- Bent
- Bit
- Brecfrag
- Calc
- Carb
- Chtdk
- Chtlt
- Dol
- Feldspar
- Ferrpel
- Ferr
- Glau
- Gyp
- Hvymin
- Kaol
- Marl

#### FOSSIL

- Minxl
- Nodule
- Phos
- Pyr
- Salt
- Sandy
- Silt
- Sil
- Sulphur
- Tuff

#### FOSSIL

- Algae
- Amph
- Belm
- Bioclst
- Brach
- Bryozoa
- Cephal
- Coral

#### STRINGER

- Crin
- Echin
- Fish
- Foram
- Fossil
- Gastro
- Oolite
- Ostra
- Pelec
- Pellet
- Pisolite
- Plant
- Strom

#### STRINGER

- Anhy
- Arg
- Bent
- Coal
- Dol

#### TEXTURE

- Boundst
- Chalky
- Cryxln
- Earthy
- Finexln
- Grainst
- Lithogr
- Microxln
- Mudst
- Packst
- Wackest

#### TEXTURE

- Gyp
- Ls
- Mrst
- Sltstrg
- Ssstrg

### OTHER SYMBOLS

#### POROSITY

- Earthy
- Fenest
- Fracture
- Inter
- Moldic
- Organic
- Pinpoint
- Vuggy

#### SORTING

- Well
- Moderate
- Poor

#### ROUNDING

- Rounded
- Subrnd
- Subang

#### INTERVAL

- Angular

#### OIL SHOW

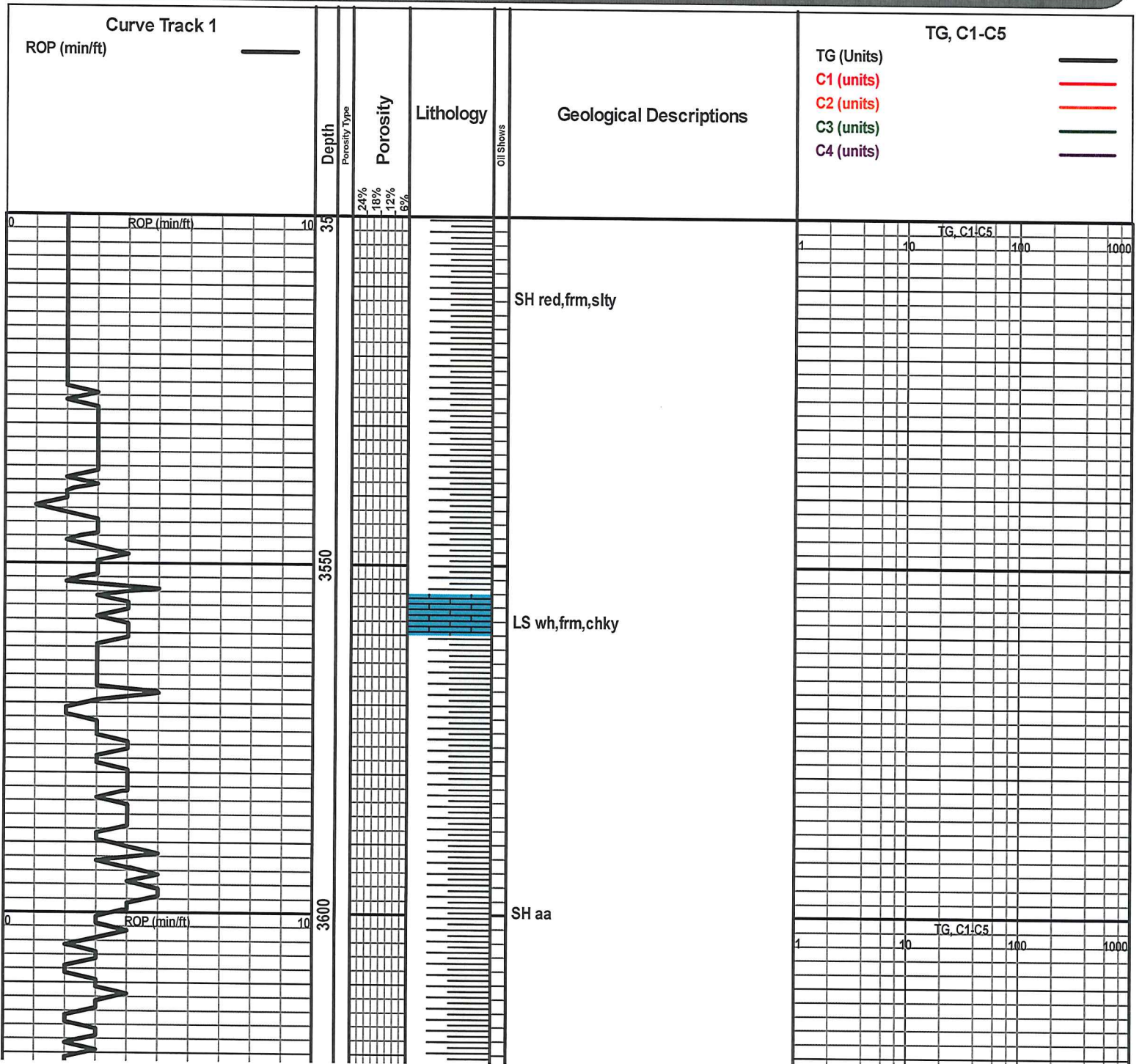
- Even
- Spotted
- Ques
- Dead

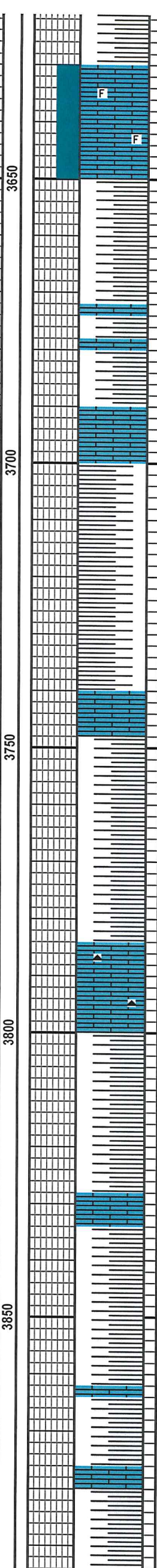
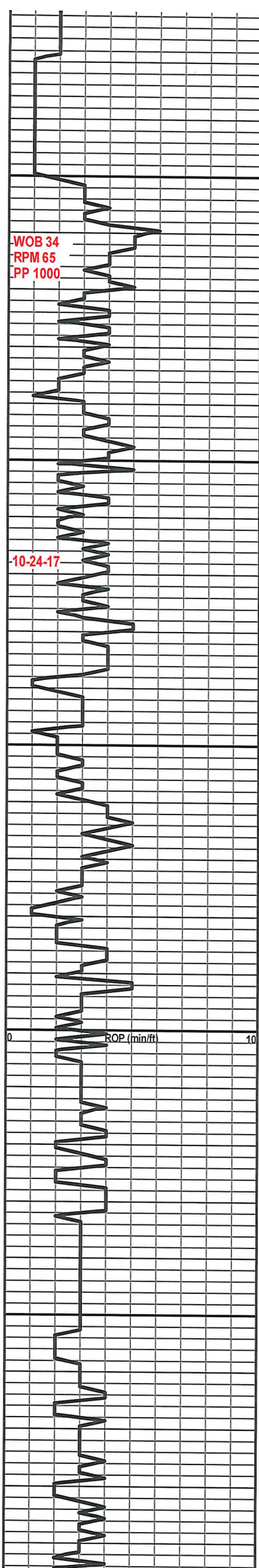
#### INTERVAL

- Dst
- Dst

#### EVENT

- Rft
- Sidewall





LSwh,frm,v foss,chky ip, fr intg por,ns

SH aa with v thin LS pale gy,hd,blky

LS wh-frm,hd,blky,chky ip,sl foss,p por,ns

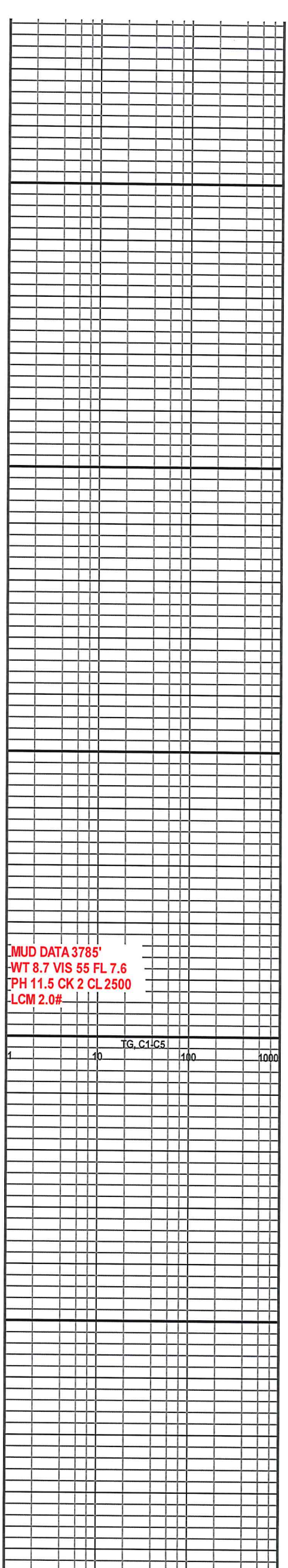
SH gy,gy gn,sl hd,

LS pale gy-wh,hd, blky,v chky ip,ns

SH red,frm,v arg

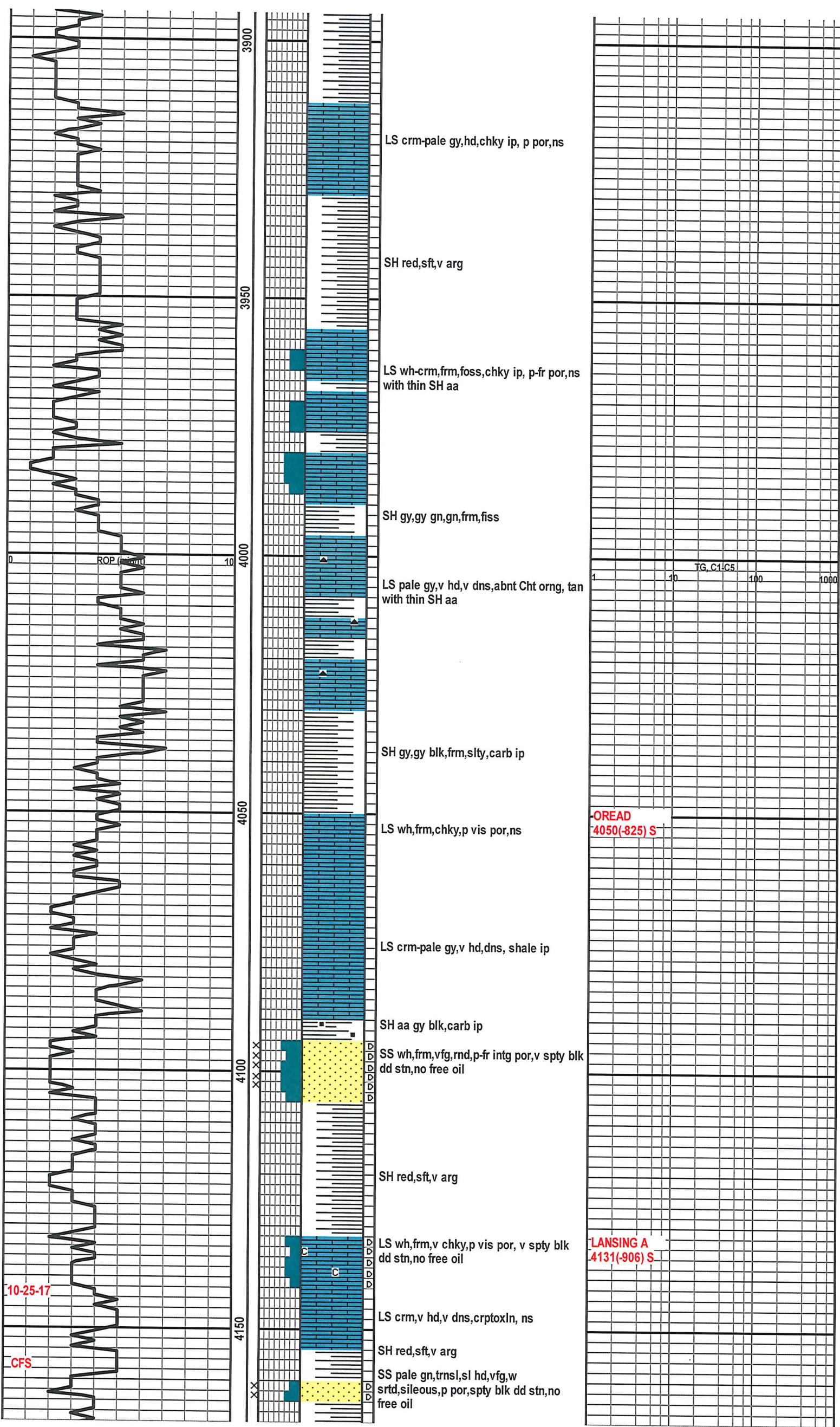
LS wh-frm,sl hd,v chky,p vis por,abnt  
Cht org

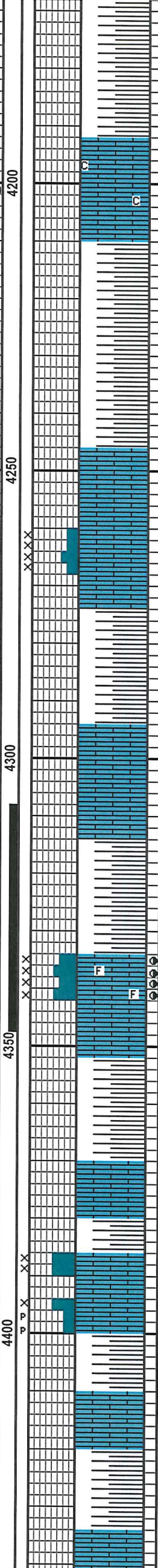
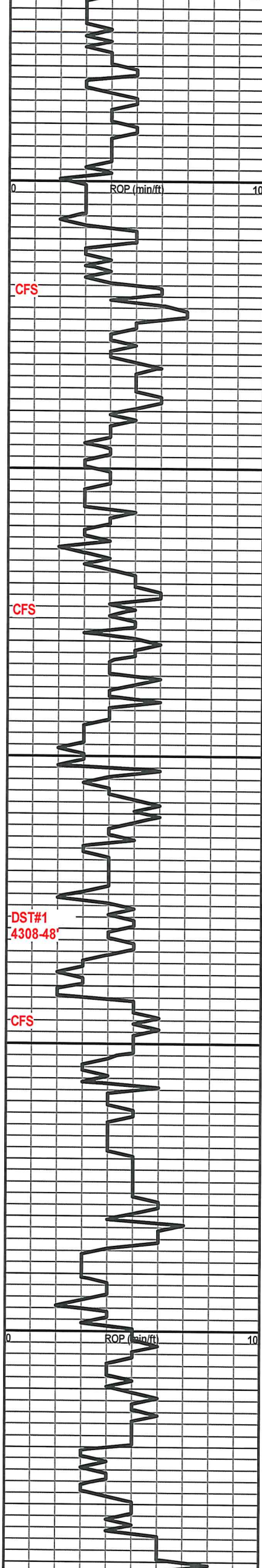
SH red,sft,v arg with thin LS pale  
gy,hd,blky,dns,arg



MUD DATA 3785'  
WT 8.7 VIS 55 FL 7.6  
PH 11.5 CK 2 CL 2500  
LCM 2.0#

TG, C1,C5  
1 10 100 1000





SH aa

LS wh,frm-sl hd,chky ip,p vis por,ns

SH red,gn,gy,v arg,abnt fiss ip

LS crm,hd,dns,crptoxln,p por,ns

LS wh-crm,microIn,foss ip,sub chky,p vis por,ns

SH red,v sft,v arg

LS wh-crm,frm,sub chky,p vis por,ns

LS crm-tan,v hd,dns,blky, crptoxln,ns

SH red,v sft,v arg

LS off wh,frm,foss ip, microIn,p-fr xln & pp vuggy por, spty-even live brn stn,g cut,fr show free oil

LS crm,hd,blky,dns,crptoxln, ns

SH red,v sft,v arg

LS wh-crm,sl hd,blky,chky ip,p por,ns

SH aa

LS off wh,frm,foss,chky ip, p-fr pp vuggy por,ns

SH aa

LS crm,hd blky,dns,ns

SH red,gn,gy,frm,fiss ip

MUD DATA 4172'  
WT 9.1 VIS 51 FL 8.0  
PH 11.0 CK 2 CL 3800  
LCM 1.0#

TG, C1-C5

C ZONE  
4245(1020) S

D ZONE  
4294(-1069) S

DST#1 4308-48' 30-60-90-120 min.  
JH 2236 IF 22-91 (5" blw) ISI 1243  
FF 95-226 (7.75" blw) FSI 1211  
FH 2214  
REC: 456' TOTAL FLUID  
15' CGO, 326' GOCWM & 115' & MCW

E ZONE  
4334(-1109) S

MUD DATA 4348'  
WT 9.2 VIS 55 FL 8.0  
PH 10.5 CK 2 CL 3700  
LCM 2.0#

F ZONE  
4370(-1145) S

TG, C1-C5



