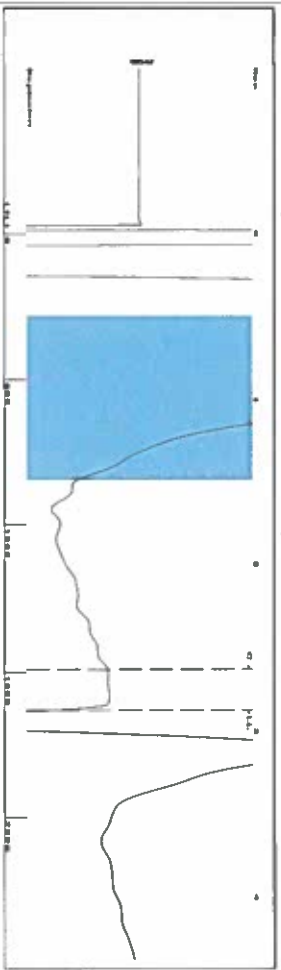
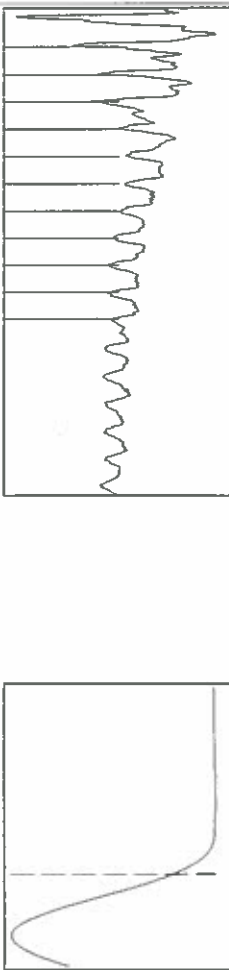


Group: SUBLETTE Well: VLAU 803 (acquired on: 03/23/18 14:48:36)



Filter Type High Pass Automatic Collar Count Yes Time 2.872 sec  
 Manual Acoustic Velocity 134.17 ft/s Manual JTS/sec 17.8891 Joints 51.4608 Jts  
 Depth 1631.31 ft

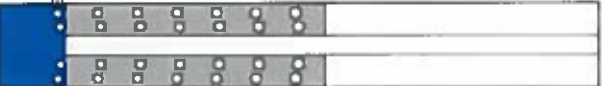
1.05 to 1.5 (Sec)



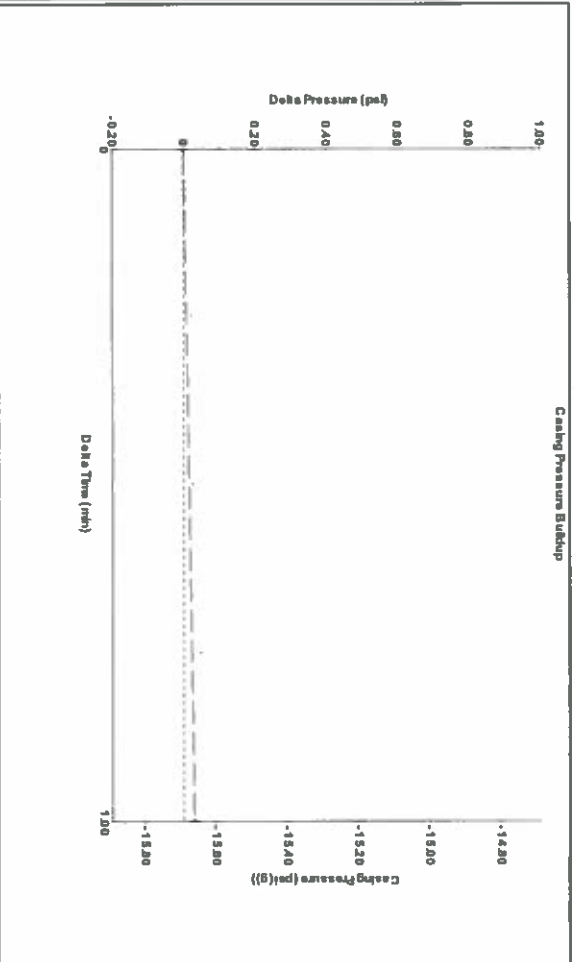
**Analysis Method: Automatic**

Group: SUBLETTE Well: VLAU 803 (acquired on: 03/23/18 14:48:36)

<b>Production</b>	<b>Potential</b>	<b>Casing Pressure</b>	<b>Producing</b>
Current	Oil	-14.7 psi (g)	Annular
Oil	Water	0.031 psi	Gas Flow
Gas	Gas	1.00 mscf/d	% Liquid
		-14.7 psi (g)	100 %
<b>IPR Method</b>	<b>Vogel</b>	<b>Gas/Liquid Interface Pressure</b>	<b>Production Efficiency</b>
PBHP/SBHP	-		0.0
<b>Production Efficiency</b>		<b>Liquid Level Depth</b>	
		1631.31 ft	
<b>Oil</b>	40 deg API	<b>Pump Intake Depth</b>	
<b>Water</b>	1.05 Sp.Gr.H2O	3623.00 ft	
<b>Gas</b>	0.70 Sp.Gr.AIR	<b>Formation Depth</b>	
		3682.00 ft	
<b>Acoustic Velocity</b>	1136.01 ft/s		
<b>Formation Submergence</b>			
Total Gaseous Liquid Column HT (TVD)	1992 ft		
Equivalent Gas Free Liquid IIR (TVD)	1992 ft		
<b>Acoustic Test</b>			

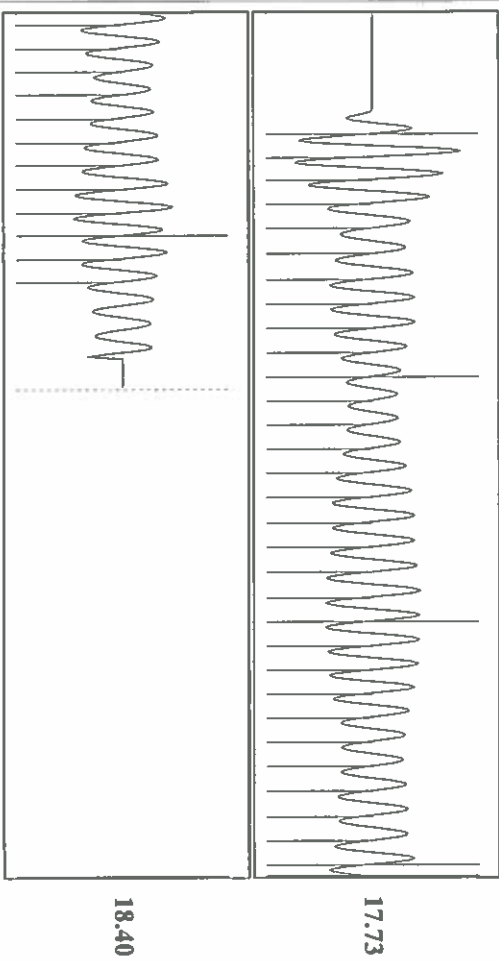


Group: SUBLETTE Well: VLAU 803 (acquired on: 03/23/18 14:48:36)



Change in Pressure 0.03 psi PT14679 Range  
 Change in Time 1.00 min 0 - ? psi

Group: SUBLETTE Well: VLAU 803 (acquired on: 03/23/18 14:48:36)



Acoustic Velocity 1136.01 ft/s Joints counted 42  
 Joints Per Second 17.9181 jts/sec Joints to liquid level 51.4608  
 Depth to liquid level 1631.31 ft Filter Width 15.8891  
 Automatic Collar Count Yes Time to 1st Collar 0.28 2.624