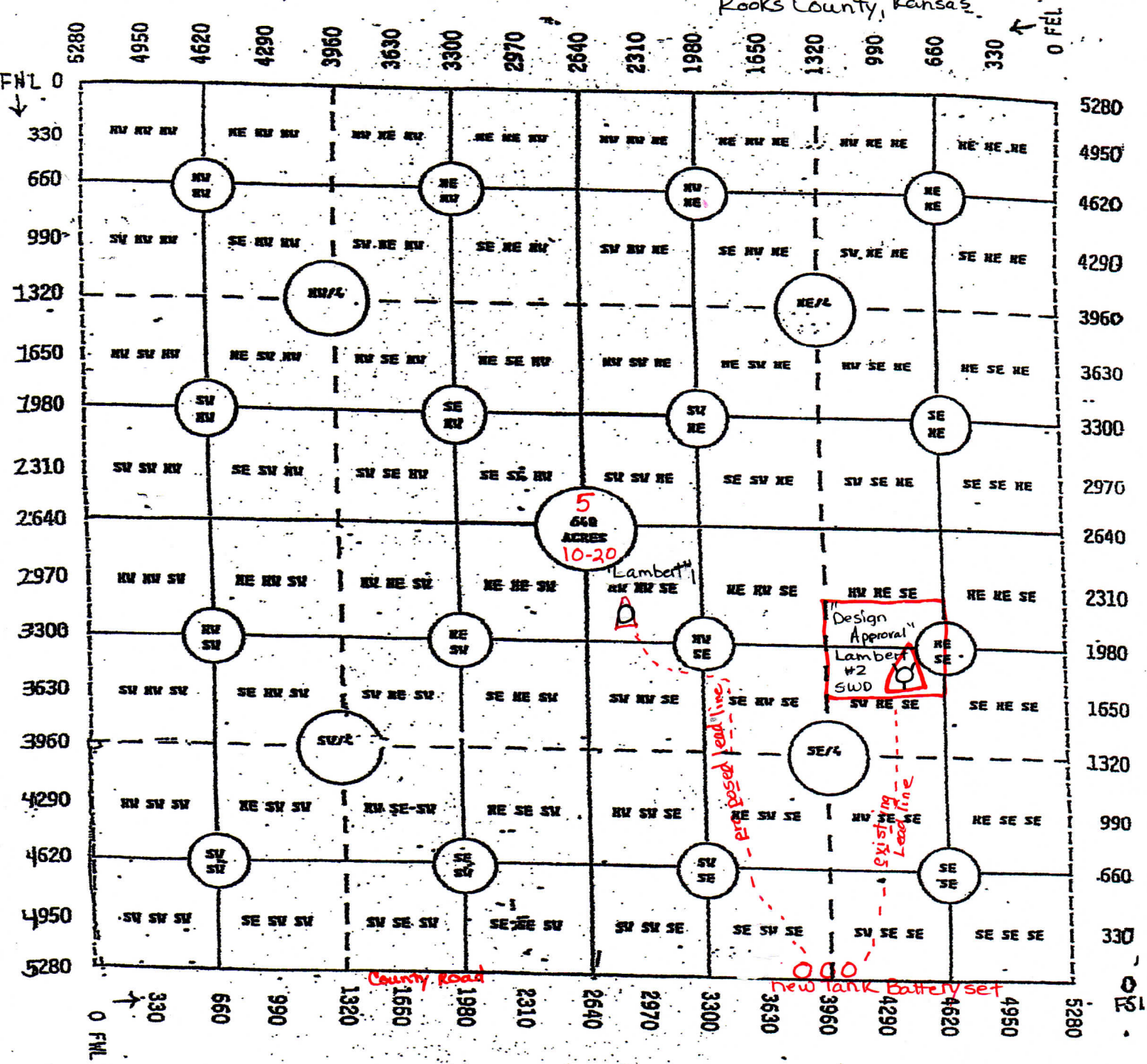


James P. Williams Enterprises, Inc  
 Lambert Lease - SE/4 of S5-T10S-R20W  
 Rooks County, Kansas



for #1 If production casing is set  
 A leadline will be laid from #1 well  
 to the Southeast to Tank Battery  
 that will be set

3-28-2018

for #2 SWD there is an existing lead line  
 that will come from Gun Barrell to #2 SWD  
 if approved