

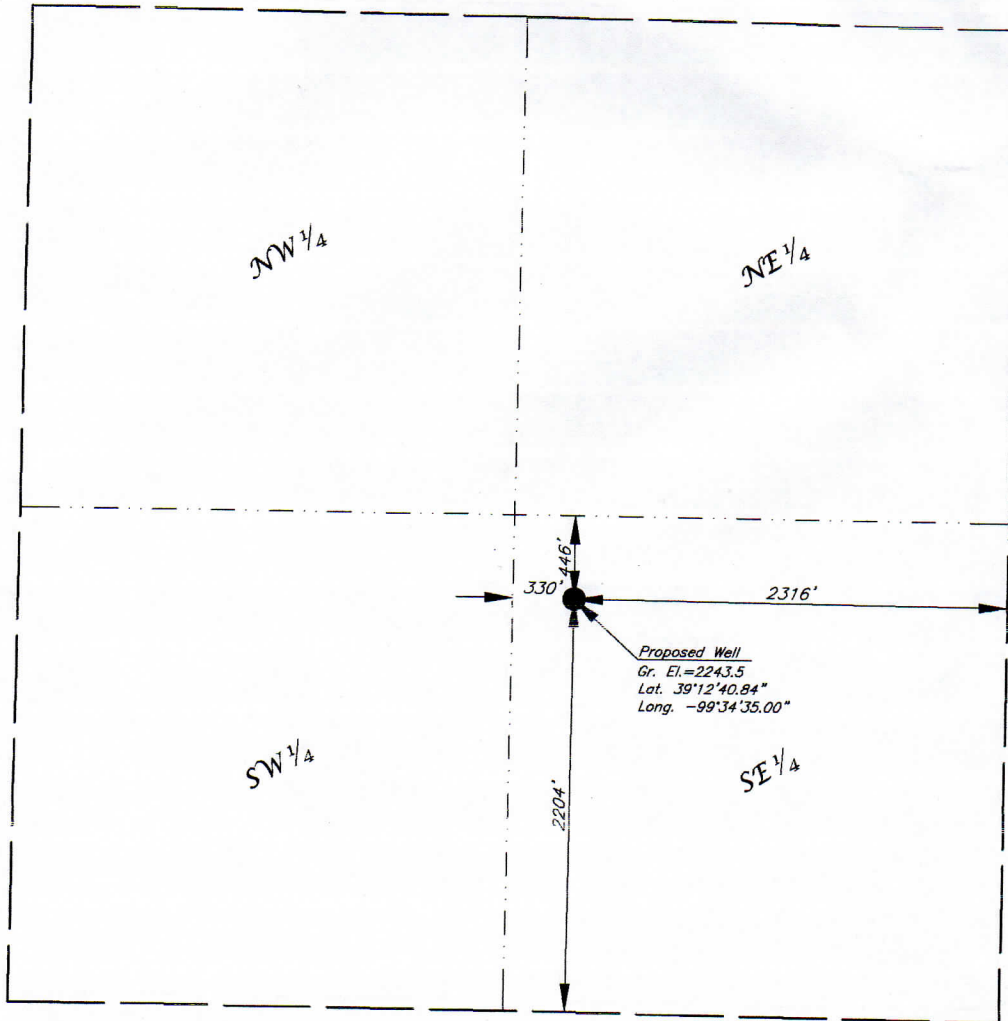
PENCO ENGINEERING, P.A.  
P.O. BOX 392  
PLAINVILLE, KS 67663  
(785) 434-4611

NW 1/4, NE 1/4, SE 1/4 Section 5, T10S, R20W  
LOCATION

February 15, 2018  
DATE

Lambert #1  
LEASE LOCATION NO.

Rocks  
COUNTY



Elevations based on a USGS Quad Map Elevation tied to the S 1/4 of Section 5, T10S, R20W.  
Elev. = 2263.0 (NGVD)

This Survey does not constitute a boundary survey.



Scale: 1" = 1000'

X:\ac2\s0\2018\s018010-Williams OW  
5-10-20\_R0\ACAD\s018010.dwg