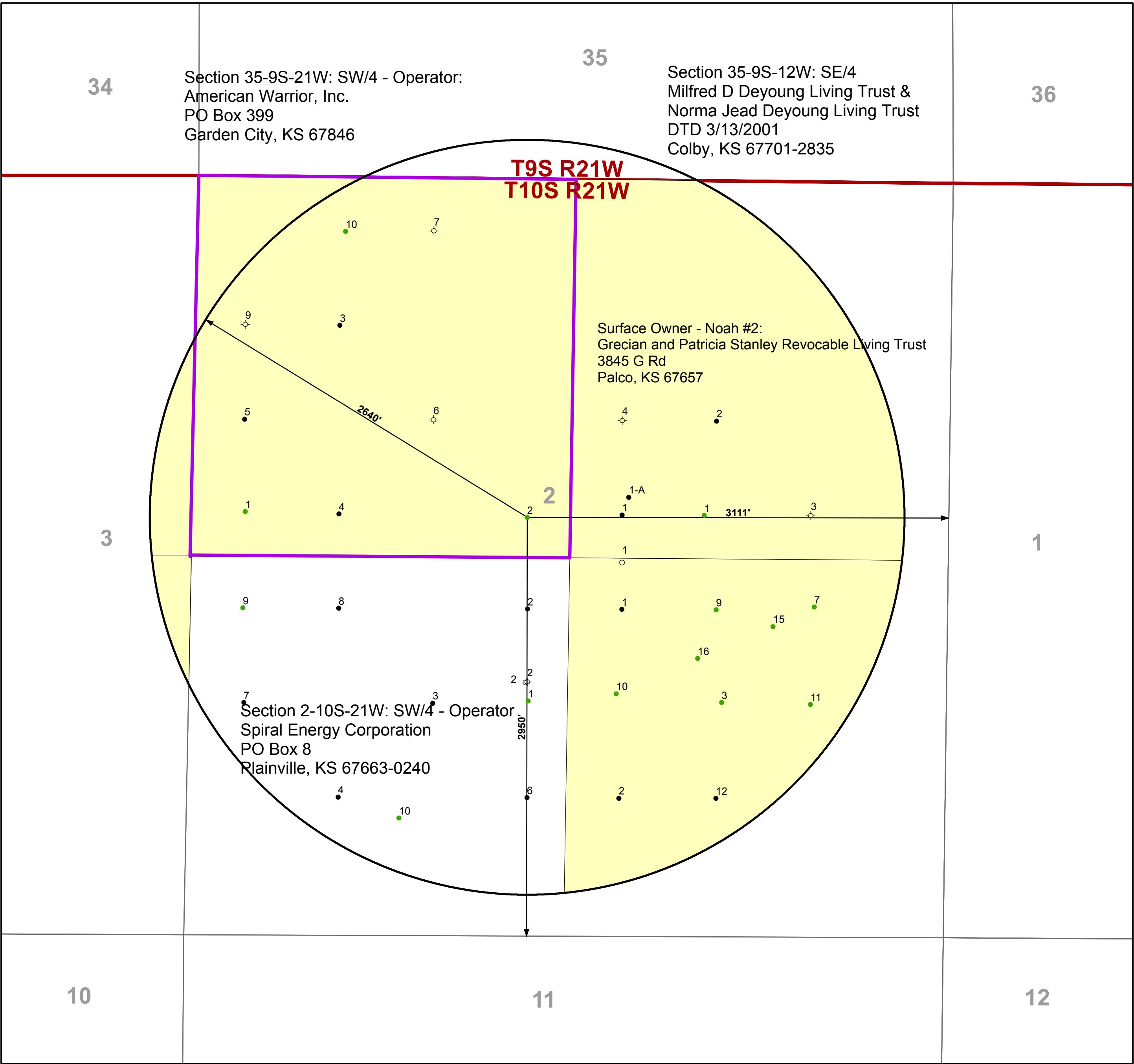


NOAH 2



	NOAH LEASE		DRY
	LSE		GAS
	Radius		TA
	Footage Lines		INJ
	OTHER		JNK
	PA		LOC
	OIL		SRV



Graham County, KS

Cooper Field - Noah 2
 API: 1506501661
 T10S R21W S2
 SE SE SE NW
 2650 FNL 3111 FWL

