



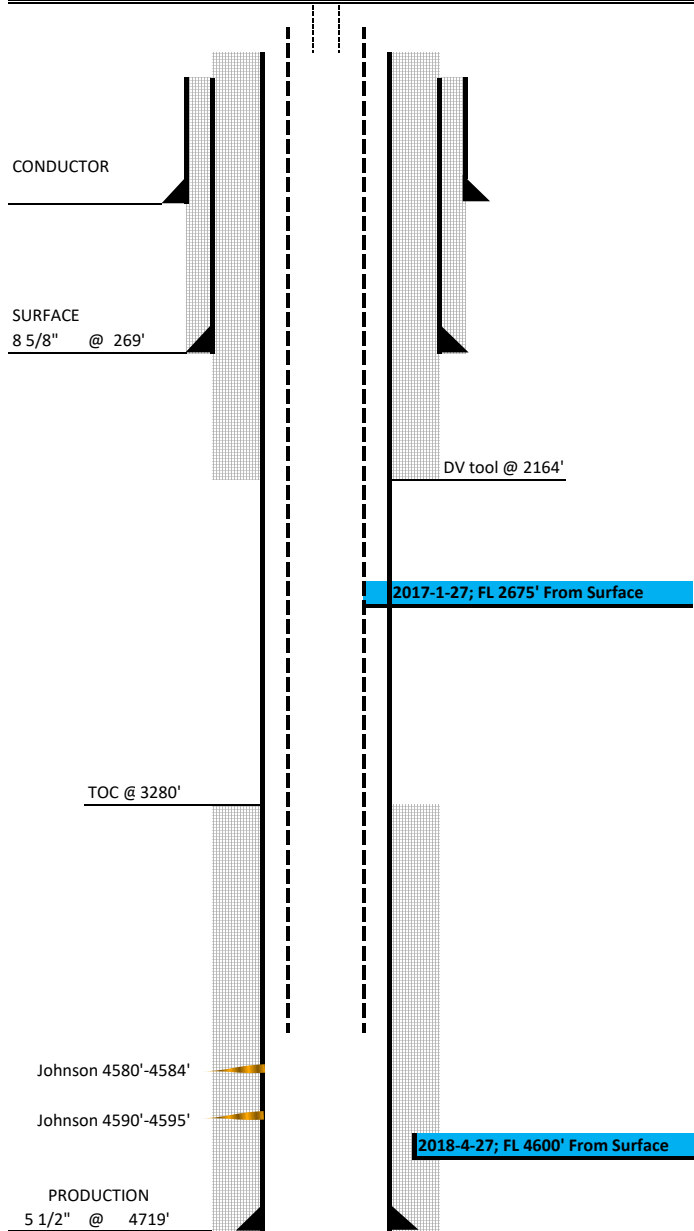
Well Name: **Fromholtz #1**
 State: KS
 County: Logan
 Field: Schippers
 API: 15-109-21261-00-00
 Location: 63' FNL & 179' FWL
 Operator: **NGO**

Elevations	
RKB	3001
DF	
GL	2992

Directional Data		
KOP		RKB
Max DEV	o	RKB
Max Dogleg	o	RKB
Dev @ Perfs	o	RKB
Return to Vertical		RKB

Last Update: 1/30/2017
 Schematic AS OF Date: 6/5/2014

Spud: 3/24/2014
 TD: 4/1/2014
 Completion: 4/2/2014



CASING / CEMENT

INTERVAL	HOLE	CSG	WT.	GR.	Depth Top	Depth Btm	LENGTH	CMT	TOC
COND.	-	-	-	-	'	'	'		
SURF.	12.25'	8 5/8"			'	269'	269'	200 sx	
Production	7.875'	5 1/2"	15.5#		'	4,719'	4,719'	200 sx	
DV Tool						2,164'		400 sx	
Tbg									
SN									
Rods									

Perf Data

Stage #	Formation	Top Perf	Btm Perf	Length	Net ft	SPF	Total Holes
1	Johnson	4,580'	4,584'	4'	4'	6	24
2	Johnson	4,590'	4,594'	4'	4'	6	24

Stimulation Data

Stage #	Water	Proppant	Acid	Avg R	Max R	Avg P	ISIP	FG



2017-1-27; FL 2675' From Surface

2018-4-27; FL 4600' From Surface