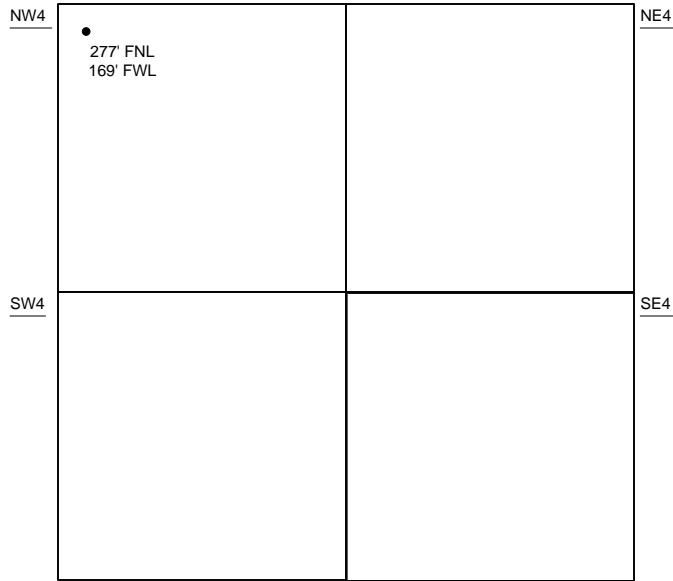
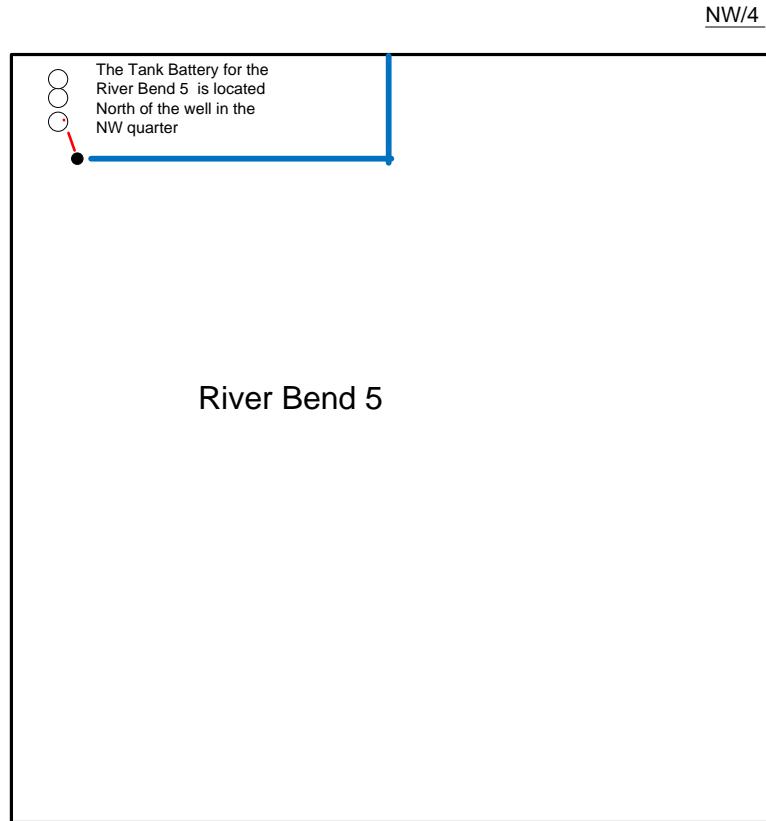


Proposed Plan of Construction
River Bend 5
(Lot 1) Sec 26 T24S-R32W
Finney County, KS



Sec 26 - T24S - R32W



- Well Location
- Proposed Lease Roads
- - - Proposed Pipeline
- Proposed Tank Battery
- Proposed Power Lines
- - - Existing Pipeline

Proposed Details of
NW/4 Sec 26 - T24S - R32W

Note-Drawing **Not** to Scale