



T24S, R32W, 6th P.M.

MERIT ENERGY COMPANY  
**RIVER BEND 5**  
 277' FNL 169' FWL  
 LOT 1, SECTION 26, T24S, R32W, 6th P.M.  
 FINNEY COUNTY, KANSAS

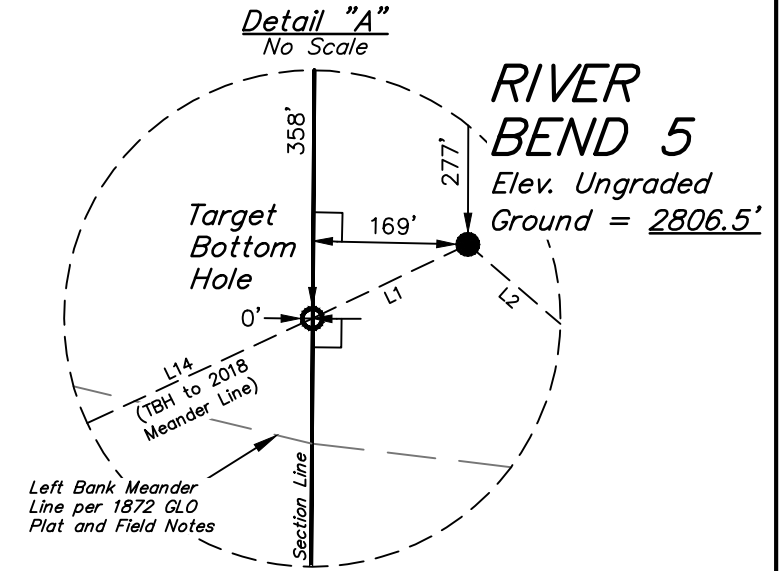
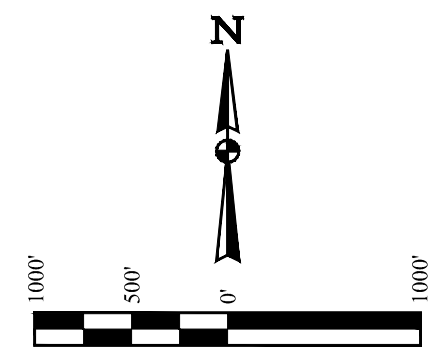
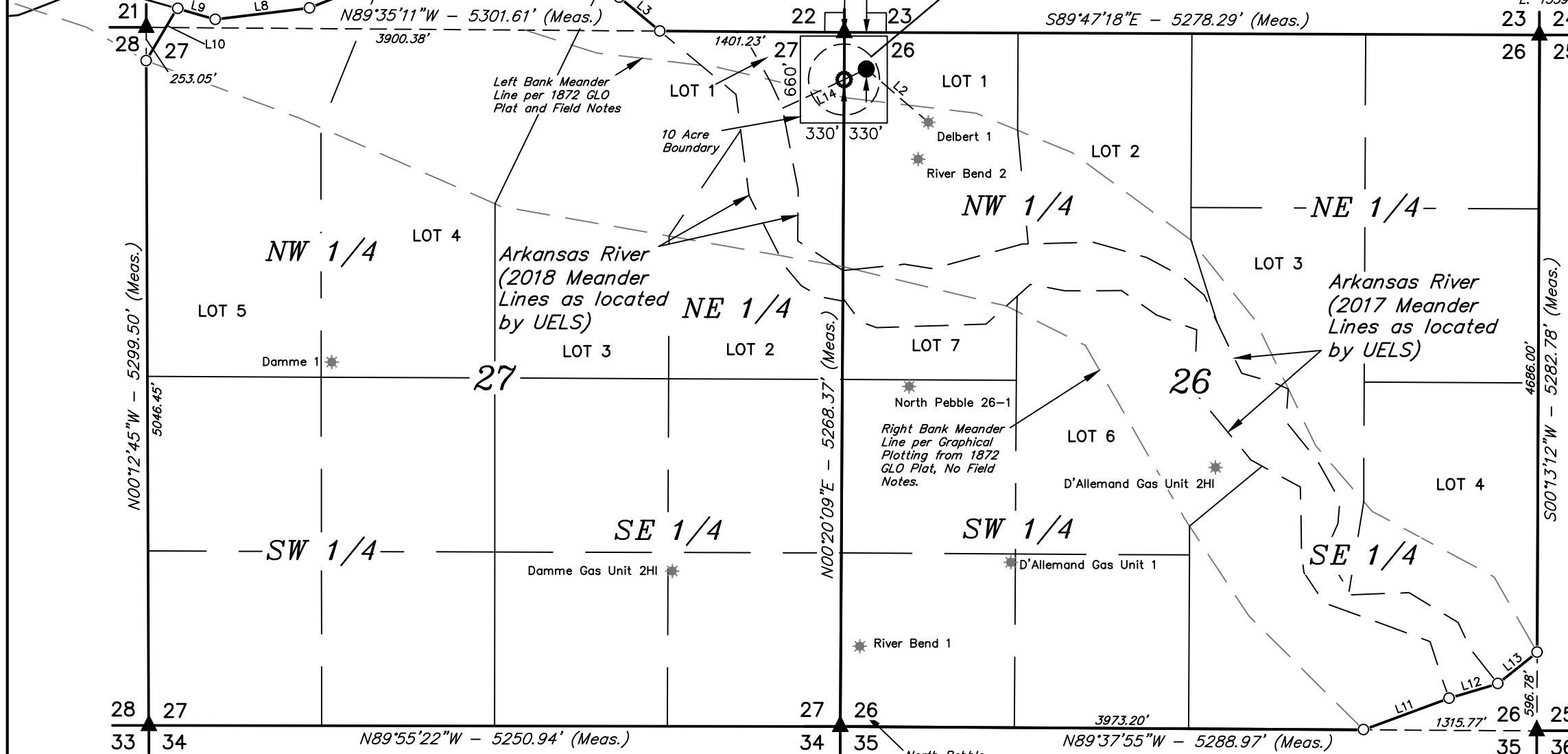
**BASIS OF BEARINGS**  
 BASIS OF BEARINGS IS A G.P.S. OBSERVATION  
**BASIS OF ELEVATION**

BASED ON NGS CONTROL STATION WITH A PUBLISHED ELEVATION OF 2848.98' (NAVD88) AND A PUBLISHED POSITION OF LAT: N37°58'08.98901" LONG: W100°54'04.80320" (NAVD83(2011)).

Found 4"x4" Concrete Monument, Rebar, 0.8' Below Grade. (SP NAD 27) (KANSAS SOUTH) N: 474147.57 E: 1328554.64

4"x4" Concrete Monument, 0.6' Below Grade (SP NAD 27) (KANSAS SOUTH) N: 473972.90 E: 1333852.22

5/8" Rebar, 0.5' Below Grade (SP NAD 27) (KANSAS SOUTH) N: 473817.58 E: 1339127.07



Found 3.5"x3.5" Concrete Monument, 1.2' Above Grade. (SP NAD 27) (KANSAS SOUTH) N: 468850.51 E: 1328437.91

2" Pipe, 1.0' Below Grade (SP NAD 27) (KANSAS SOUTH) N: 468708.31 E: 1333685.78

1/2" Rebar w/Yellow Plastic Cap LS #27 At Grade (SP NAD 27) (KANSAS SOUTH) N: 468538.26 E: 1338970.86

LINE TABLE			LINE TABLE		
LINE	DIRECTION	LENGTH	LINE	DIRECTION	LENGTH
L1	S64°32'10"W	187.27'	L8	S83°04'44"W	720.80'
L2	S49°19'59"E	620.97'	L9	N74°05'18"W	301.80'
L3	N50°12'27"W	401.45'	L10	N30°30'33"E	459.78'
L4	N69°47'33"W	965.31'	L11	N69°48'28"E	693.34'
L5	N88°10'11"W	685.57'	L12	N73°15'48"E	385.47'
L6	S53°33'51"W	485.45'	L13	N51°24'07"E	381.50'
L7	S68°07'10"W	398.73'	L14	S65°04'53"W	513.65'

<b>NAD 83 (SURFACE LOCATION)</b> LATITUDE = 37°56'41.90" (37.944973) LONGITUDE = 100°48'36.66" (100.810183)	<b>NAD 83 (TARGET BOTTOM HOLE)</b> LATITUDE = 37°56'41.11" (37.944752) LONGITUDE = 100°48'38.77" (100.810770)
<b>NAD 27 (SURFACE LOCATION)</b> LATITUDE = 37°56'41.82" (37.944950) LONGITUDE = 100°48'35.09" (100.809746)	<b>NAD 27 (TARGET BOTTOM HOLE)</b> LATITUDE = 37°56'41.03" (37.944729) LONGITUDE = 100°48'37.20" (100.810333)
<b>STATE PLANE NAD 83 (KANSAS SOUTH)</b> N: 1786046.33 E: 646236.04	<b>STATE PLANE NAD 83 (KANSAS SOUTH)</b> N: 1785970.21 E: 646064.97
<b>STATE PLANE NAD 27 (KANSAS SOUTH)</b> N: 473691.17 E: 1334011.95	<b>STATE PLANE NAD 27 (KANSAS SOUTH)</b> N: 473615.04 E: 1333840.89

**CERTIFICATE**  
 THIS IS TO CERTIFY THAT THE ABOVE PLAT WAS PREPARED FROM FIELD NOTES OF ACTUAL SURVEYS MADE BY ME OR UNDER MY SUPERVISION AND THAT THE SAME ARE TRUE AND CORRECT TO THE BEST OF MY KNOWLEDGE AND BELIEF.

**JUSTIN L. GARCIA**  
 REGISTERED LAND SURVEYOR  
 REGISTRATION NO. 1461  
 STATE OF KANSAS 06-15-18

- LEGEND:**
- ⊥ = 90° SYMBOL
  - = PROPOSED WELLHEAD.
  - = TARGET BOTTOM HOLE.
  - ▲ = SECTION CORNERS LOCATED
  - = DIMENSION CORNER ONLY
  - ★ = EXISTING WELLS

REV: 2 06-15-18 D.J.W. (CERTIFICATE CORRECTION)

**UINTAH**  
 ENGINEERING & LAND SURVEYING

**UELS, LLC**  
 Corporate Office \* 85 South 200 East  
 Vernal, UT 84078 \* (435) 789-1017

<b>SURVEYED BY</b>	J.P.	06-08-18	<b>SCALE</b>
<b>DRAWN BY</b>	C.C.	03-01-18	1" = 1000'

**WELL LOCATION PLAT**

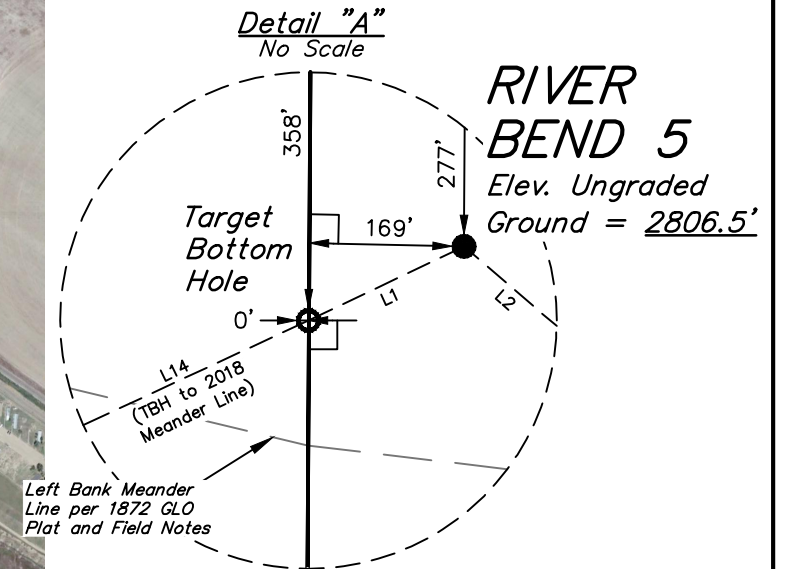
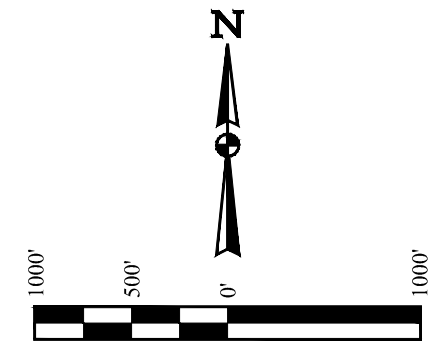
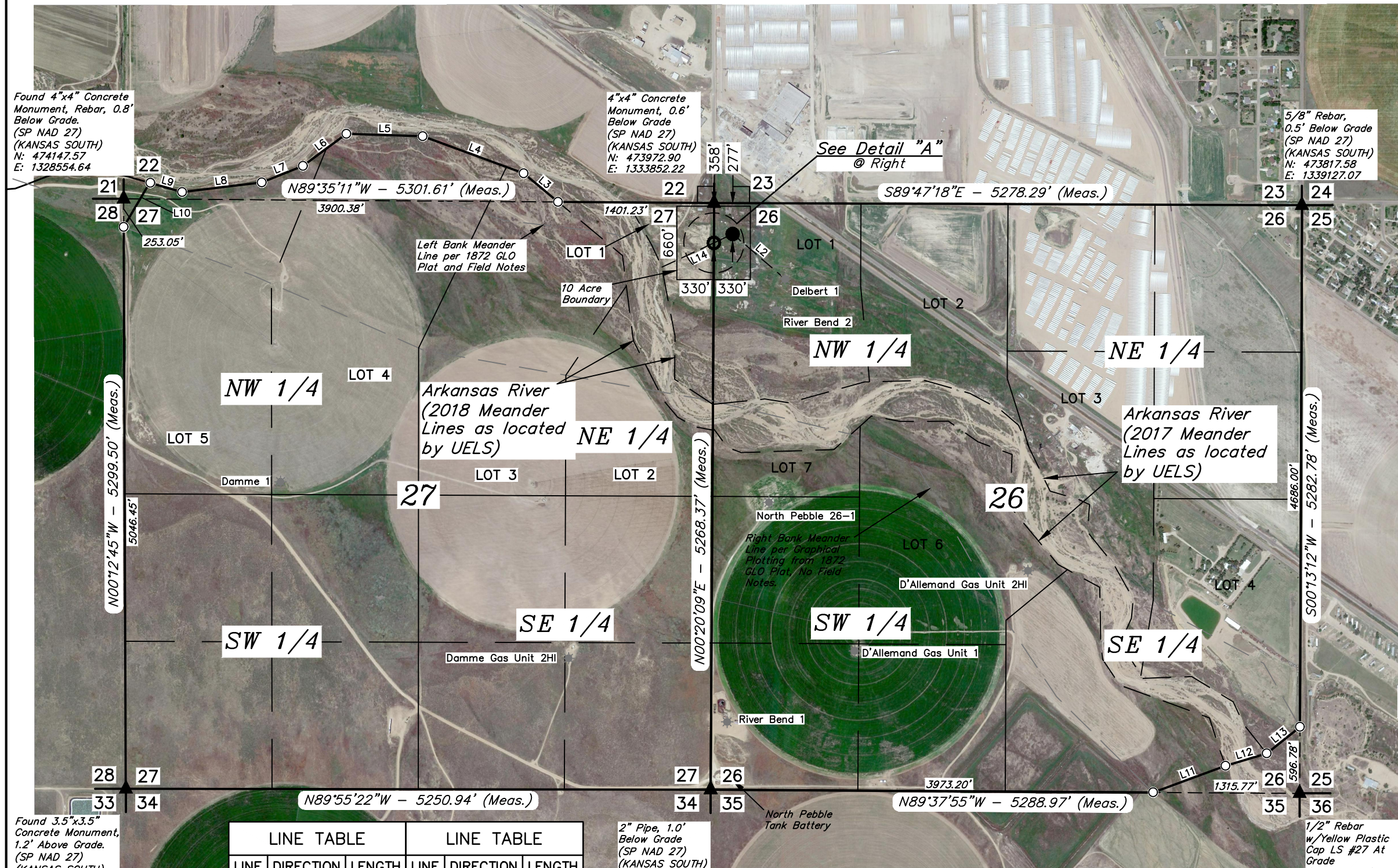
T24S, R32W, 6th P.M.

MERIT ENERGY COMPANY

RIVER BEND 5  
277' FNL 169' FWL  
LOT 1, SECTION 26, T24S, R32W, 6th P.M.  
FINNEY COUNTY, KANSAS

BASIS OF BEARINGS  
BASIS OF BEARINGS IS A G.P.S. OBSERVATION  
BASIS OF ELEVATION

BASED ON NGS CONTROL STATION WITH A PUBLISHED ELEVATION OF 2848.98' (NAVD88) AND A PUBLISHED POSITION OF LAT: N37°58'08.98901" LONG: W100°54'04.80320" (NAVD83(2011)).



Found 4"x4" Concrete Monument, Rebar, 0.8' Below Grade. (SP NAD 27) (KANSAS SOUTH) N: 474147.57 E: 1328554.64

Found 3.5"x3.5" Concrete Monument, 1.2' Above Grade. (SP NAD 27) (KANSAS SOUTH) N: 468850.51 E: 1328437.91

Found 4"x4" Concrete Monument, 0.6' Below Grade (SP NAD 27) (KANSAS SOUTH) N: 473972.90 E: 1333852.22

2" Pipe, 1.0' Below Grade (SP NAD 27) (KANSAS SOUTH) N: 468708.31 E: 1333685.78

5/8" Rebar, 0.5' Below Grade (SP NAD 27) (KANSAS SOUTH) N: 473817.58 E: 1339127.07

1/2" Rebar w/ Yellow Plastic Cap LS #27 At Grade (SP NAD 27) (KANSAS SOUTH) N: 468538.26 E: 1338970.86

Found 4"x4" Concrete Monument, Rebar, 0.8' Below Grade. (SP NAD 27) (KANSAS SOUTH) N: 474147.57 E: 1328554.64

LINE TABLE			LINE TABLE		
LINE	DIRECTION	LENGTH	LINE	DIRECTION	LENGTH
L1	S64°32'10"W	187.27'	L8	S83°04'44"W	720.80'
L2	S49°19'59"E	620.97'	L9	N74°05'18"W	301.80'
L3	N50°12'27"W	401.45'	L10	N30°30'33"E	459.78'
L4	N69°47'33"W	965.31'	L11	N69°48'28"E	693.34'
L5	N88°10'11"W	685.57'	L12	N73°15'48"E	385.47'
L6	S53°33'51"W	485.45'	L13	N51°24'07"E	381.50'
L7	S68°07'10"W	398.73'	L14	S65°04'53"W	513.65'

<b>NAD 83 (SURFACE LOCATION)</b> LATITUDE = 37°56'41.90" (37.944973) LONGITUDE = 100°48'36.66" (100.810183)	<b>NAD 83 (TARGET BOTTOM HOLE)</b> LATITUDE = 37°56'41.11" (37.944752) LONGITUDE = 100°48'38.77" (100.810770)
<b>NAD 27 (SURFACE LOCATION)</b> LATITUDE = 37°56'41.82" (37.944950) LONGITUDE = 100°48'35.09" (100.809746)	<b>NAD 27 (TARGET BOTTOM HOLE)</b> LATITUDE = 37°56'41.03" (37.944729) LONGITUDE = 100°48'37.20" (100.810333)
<b>STATE PLANE NAD 83 (KANSAS SOUTH)</b> N: 1786046.33 E: 646236.04	<b>STATE PLANE NAD 83 (KANSAS SOUTH)</b> N: 1785970.21 E: 646064.97
<b>STATE PLANE NAD 27 (KANSAS SOUTH)</b> N: 473691.17 E: 1334011.95	<b>STATE PLANE NAD 27 (KANSAS SOUTH)</b> N: 473615.04 E: 1333840.89

CERTIFICATE OF CORRECTION  
THIS IS TO CERTIFY THAT THE ABOVE PLAT WAS PREPARED FROM FIELD NOTES OF ACTUAL SURVEYS MADE BY ME OR UNDER MY SUPERVISION AND THAT THE SAME ARE TRUE AND CORRECT TO THE BEST OF MY KNOWLEDGE AND BELIEF.

**JUSTIN L. GARCIA**  
REGISTERED LAND SURVEYOR  
REGISTRATION NO. 1461  
STATE OF KANSAS 06-15-18

REV: 2 06-15-18 D.J.W. (CERTIFICATE CORRECTION)

**UINTAH**  
ENGINEERING & LAND SURVEYING

**UELS, LLC**  
Corporate Office \* 85 South 200 East  
Vernal, UT 84078 \* (435) 789-1017

SURVEYED BY	J.P.	06-08-18	SCALE
DRAWN BY	C.C.	03-01-18	1" = 1000'

**WELL LOCATION PLAT**

BEGINNING AT THE INTERSECTION OF SOUTH MAIN STREET AND KS-156 IN GARDEN CITY, KANSAS PROCEED IN A SOUTHWESTERLY DIRECTION ALONG SOUTH MAIN STREET APPROXIMATELY 0.7 MILES TO THE JUNCTION OF THIS ROAD AND EAST FULTON STREET TO THE EAST; TURN LEFT AND PROCEED IN AN EASTERLY DIRECTION APPROXIMATELY 3.6 MILES TO THE JUNCTION OF THIS ROAD AND SOUTH FARMLAND ROAD TO THE SOUTH; TURN RIGHT AND PROCEED IN A SOUTHERLY DIRECTION APPROXIMATELY 0.9 MILES. FROM THIS POINT, THE PROPOSED WELL LOCATION IS APPROXIMATELY 668' SOUTHEASTERLY.

TOTAL DISTANCE FROM GARDEN CITY, KANSAS TO THE PROPOSED WELL LOCATION IS APPROXIMATELY 5.3 MILES.

REV: 1 06-13-18 D.J.W. (SHL MOVE)

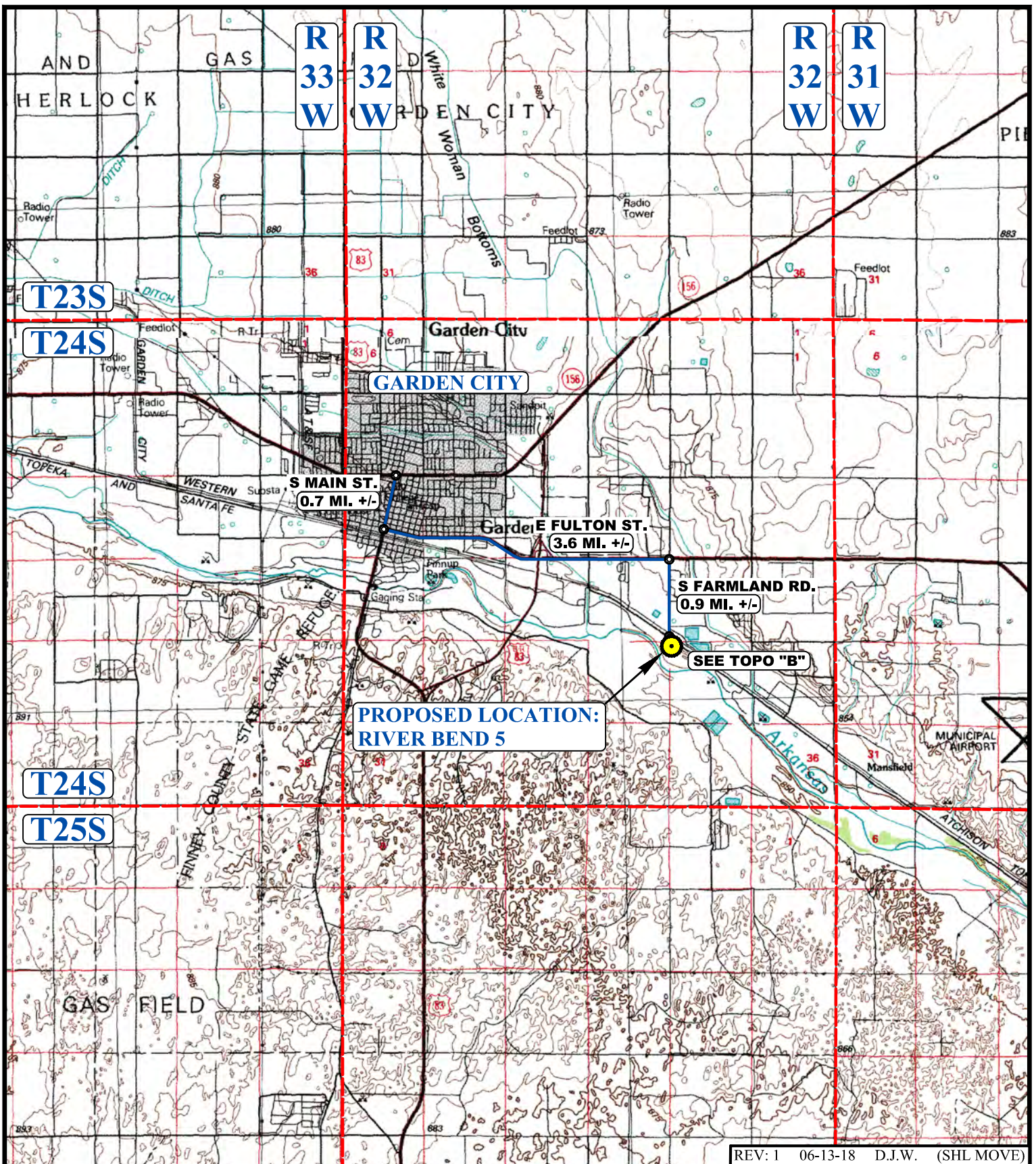
**MERIT ENERGY COMPANY**

**RIVER BEND 5  
277' FNL 169' FWL  
LOT 1, SECTION 26, T24S, R32W, 6th P.M.  
FINNEY COUNTY, KANSAS**

<b>SURVEYED BY</b>	J.P.	06-08-18	
<b>DRAWN BY</b>	C.C.	03-01-18	
<b>ROAD DESCRIPTION</b>			



**UELS, LLC**  
Corporate Office \* 85 South 200 East  
Vernal, UT 84078 \* (435) 789-1017



REV: 1 06-13-18 D.J.W. (SHL MOVE)

**LEGEND:**

 PROPOSED LOCATION



**MERIT ENERGY COMPANY**

**RIVER BEND 5**  
 277' FNL 169' FWL  
 LOT 1, SECTION 26, T24S, R32W, 6th P.M.  
 FINNEY COUNTY, KANSAS



**UELS, LLC**  
 Corporate Office \* 85 South 200 East  
 Vernal, UT 84078 \* (435) 789-1017

SURVEYED BY	J.P.	06-08-18	SCALE
DRAWN BY	C.C.	03-01-18	1 : 100,000
<b>ACCESS ROAD MAP</b>			<b>TOPO A</b>

R  
32  
W

GARDEN CITY  
4.3 MI. +/-

E FULTON ST.

ATCHISON

Sewage Disposal

N

T24S

LEGEND:

EXISTING ROAD



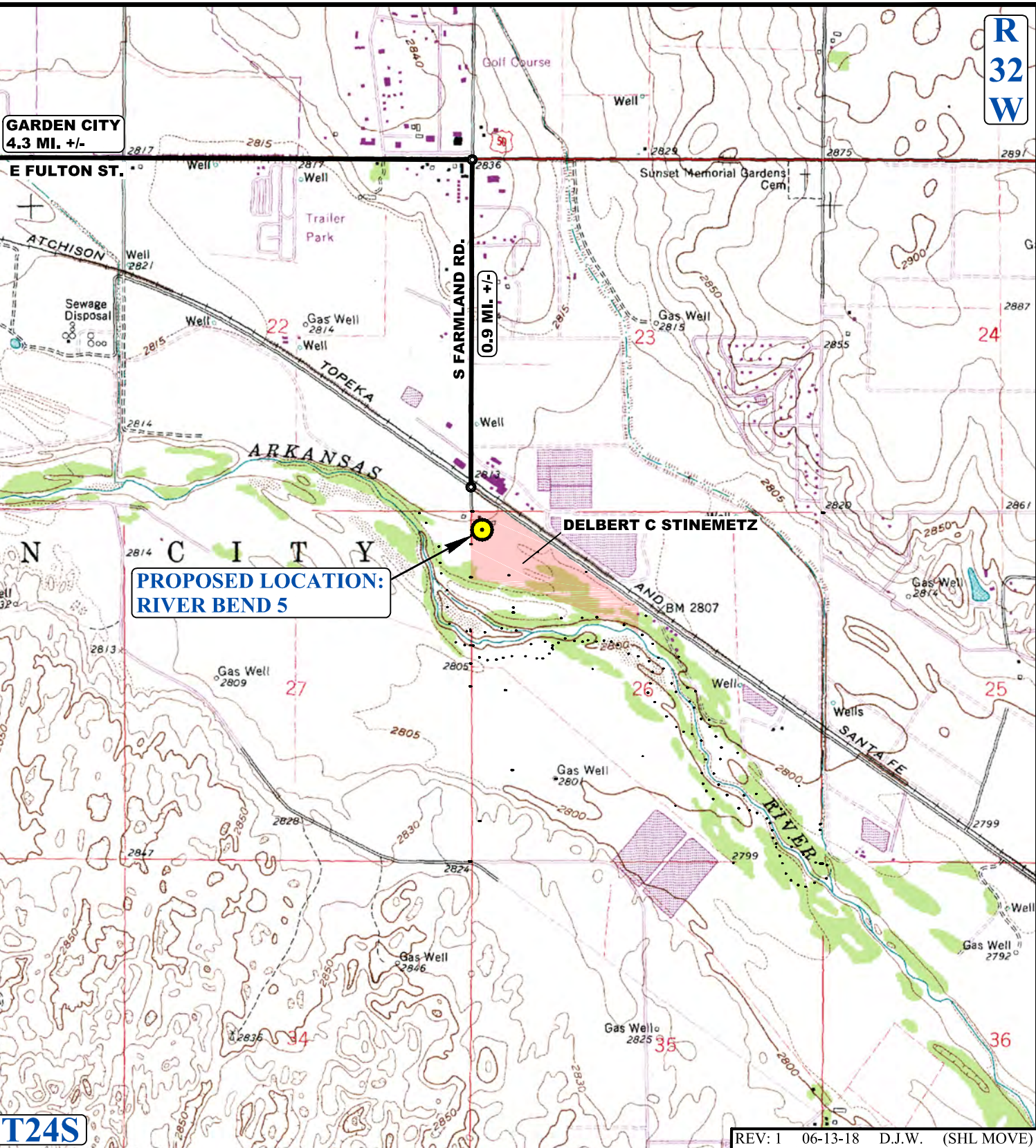
UELS, LLC  
Corporate Office \* 85 South 200 East  
Vernal, UT 84078 \* (435) 789-1017



MERIT ENERGY COMPANY

RIVER BEND 5  
277' FNL 169' FWL  
LOT 1, SECTION 26, T24S, R32W, 6th P.M.  
FINNEY COUNTY, KANSAS

SURVEYED BY	J.P.	06-08-18	SCALE
DRAWN BY	C.C.	03-01-18	1 : 24,000
ACCESS ROAD MAP			TOPO B



PROPOSED LOCATION:  
RIVER BEND 5

DELBERT C STINEMETZ

REV: 1 06-13-18 D.J.W. (SHL MOVE)

NOTE: PARCEL DATA SHOWN HAS BEEN OBTAINED FROM VARIOUS SOURCES AND SHOULD BE USED FOR MAPPING, GRAPHIC AND PLANNING PURPOSES ONLY. NO WARRANTY IS MADE BY UINTEAH ENGINEERING AND LAND SURVEYING (UELS) FOR ACCURACY OF THE PARCEL DATA.