



Scale: 5" / 100'
Measured Depth Log

Well Name #6 Edmiston
Location CWL NW SE NW 33-T25S-R4E
State Kansas **County** Butler
Country USA **Rig Number** C&G Drilling Rig #1
API Number 15-015-40425-0001 **Field** Whitewater East
Geographic Region Mid-continent **Drilling Completed** 6 August, 2018
Spud Date 4 August, 2018
Ground Elevation 1336' **K.B. Elevation** 1341'
Logged Interval 2550' **To** 3041' RTD **Total Depth** 3041'
Formation Arbuckle
Type of Drilling Fluid Chemical

Operator

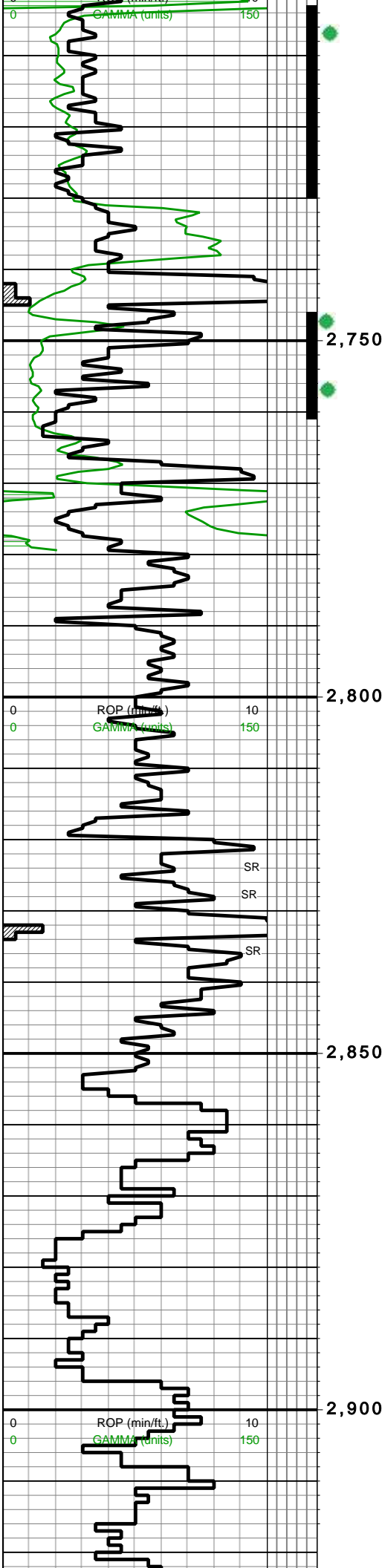
Company IGWT, Inc. KCC License 3167
Address P.O. Box 550
Rose Hill, Kansas 67133

Geologist

Name Daniel T. Johnson
Company Consulting Geologist
Address 19749 121st Rd
Winfield, Kansas 67156
620-229-3258
daniel.johnson3258@gmail.com

Other

Original operator: KimRay, Inc. & R.P. Baker Original contractor: White & Ellis Drilling, Inc.



Dolomite, brown, fine-medium crystalline, sucrosic, fair-good intercrystalline porosity, friable in part, very faint odor, a few pieces good show free oil abundant gas bubbles when crushed, 10% chert, white, fresh, trace weathered

Shale, gray-green-purple, waxy

SANDSTONE, gray-dark brown, fine grained, tite Silica cement, poor porosity, argillaceous, pyrite, chert, white, fresh, bright fluorescence, a few pieces good cut

Shale, varicolored green-gray-red brown, waxy in part

Sandstone, white, fine-medium grained, fair sorted, tight, poor porosity, no shows

Shale, varicolored red-green-gray-brown, sandst one stringers, light gray, very fine-fine grained, tite, no shows

Dolomite, light brown, medium crystalline, poor or, mudstone, pale yellow even fluorescence, no shows

Dolomite, brown-dark brown, fine-medium crystalline, poor intercrystalline porosity, no shows

Dolomite, dolomitic, light brown, medium crystalline, fair-good intercrystalline porosity, vugular porosity, fossil fragments, pale yellow fluorescence

Dolomite, light brown-medium brown, fine-medium

2720'

Simpson Ss
2741' (-1400')

2750'

2780'

Bit #: 1
Type: Button
Size: 6.125"
Depth In: 2550"
Depth Out: 2789"

Clear, rounded Simpson sand 2780'

Arbuckle Ls.
2816' (-1475)

1:52pm
2830' Sample Diversity

2830'

E-Log failed to pass 2850'

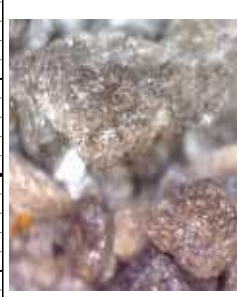
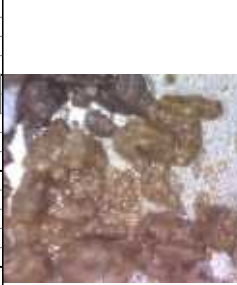
6:02pm

Arbuckle 2890-2900'

2920'

9:56pm

2960'



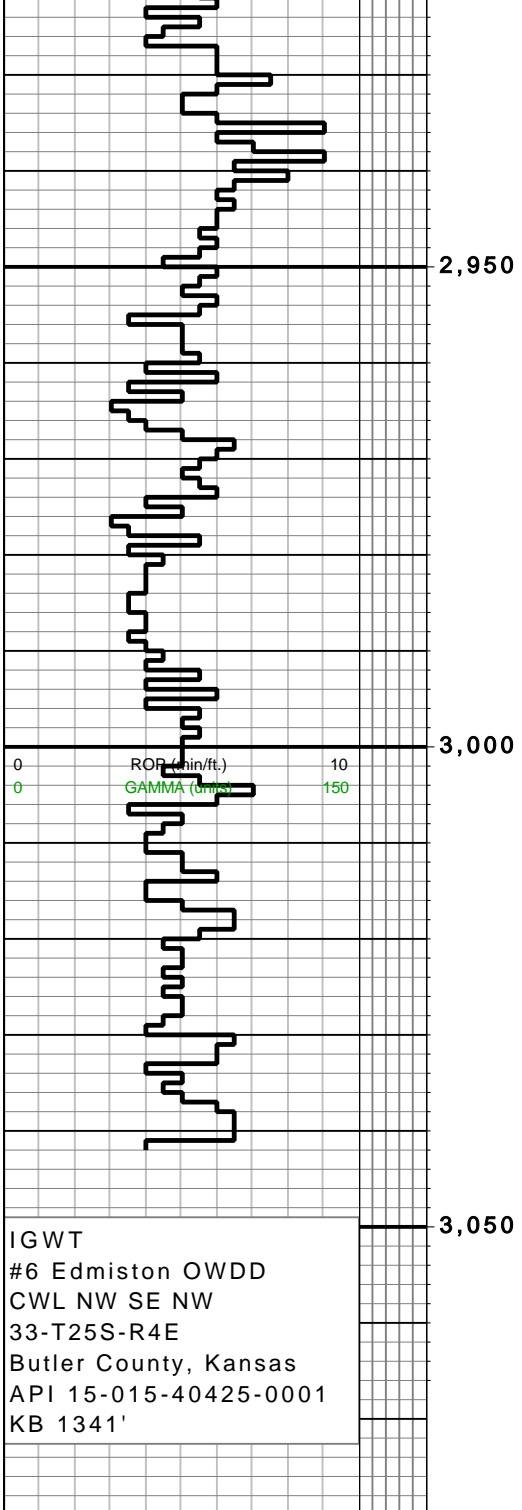
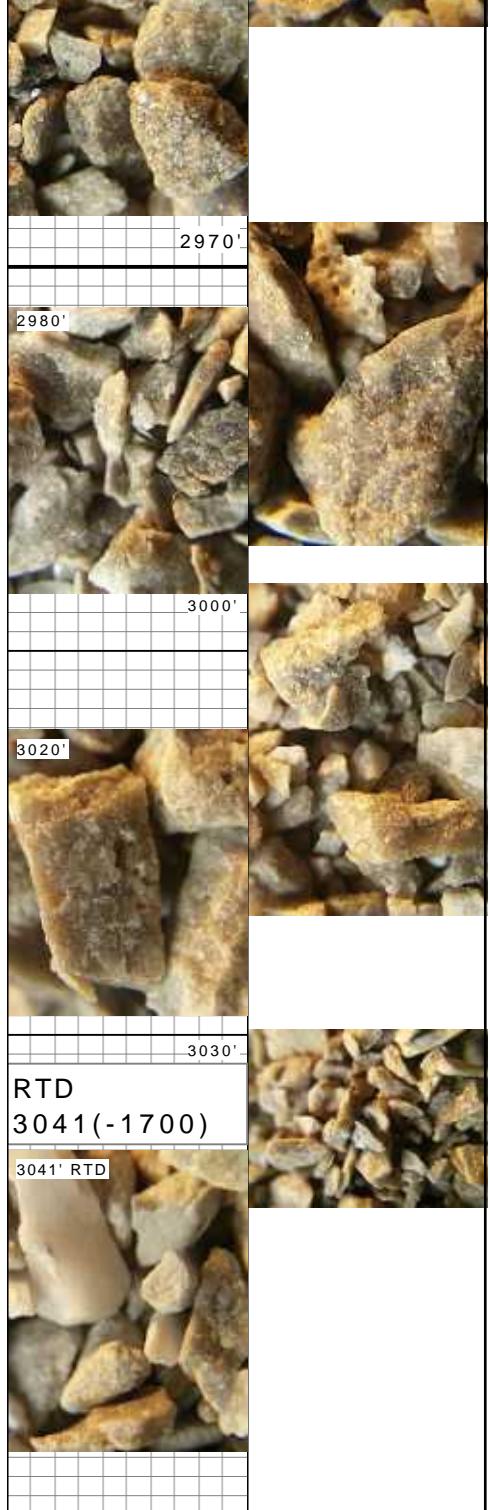
crystalline, fair intercrystalline porosity, no shows

Dolomite, brown-medium gray, medium crystalline, fair-good intercrystalline porosity, no shows

Dolomite, brown, medium crystalline, fair inxln porosity, fair moldic porosity, trace chert, white, no shows

Dolomite, dark gray-brown, medium crystalline, fair-good intercrystalline porosity, fair vugular porosity, Chert, light gray-white, fresh, sharp, no shows

2850' Log tools stacked out. Repeated attempts failed to allow tool to pass. Logged from 2850'LTD Decision to proceed with running 4 1/2" casing to +/-2830'



IGWT
 #6 Edmiston OWDD
 CWL NW SE NW
 33-T25S-R4E
 Butler County, Kansas
 API 15-015-40425-0001
 KB 1341'

ROP	ROP	Oil Show	Depth Labels	Interp Lith	Lithology Descriptions	Formation Depths	Images
0	min/ft.	10					
0	GAMMA	150					
0	units	150					