

Form	ACO1 - Well Completion
Operator	Globe Operating, Inc.
Well Name	CDK HOLDINGS 1
Doc ID	1405134

Tops

Name	Top	Datum
Dakota Sand	161	
Shale	227	
Cedar Hill	477	
Red Bed Shale	595	
Anhydrite	912	
Base Anhydrite	940	
Shale	940	
Shale & Lime	1788	
Shale	2134	
Shale & Lime	2717	
Lime & Shale	3675	
RTD	4337	

Form	ACO1 - Well Completion
Operator	Globe Operating, Inc.
Well Name	CDK HOLDINGS 1
Doc ID	1405134

Casing

Purpose Of String	Size Hole Drilled	Size Casing Set	Weight	Setting Depth	Type Of Cement	Number of Sacks Used	Type and Percent Additives
Surface	12.250	8.625	20	410	60/40 Poz	300	3% CC-1/4# FS/sk



DRILL STEM TEST REPORT

Prepared For: **Globe Operatingb Inc..**

P.O. Box 12
Great Bend ,Kansas 67530

ATTN: Keith Reavis

CDK Holdings #1

16-24s-14w Stafford

Start Date: 2018.03.17 @ 07:03:00

End Date: 2018.03.17 @ 12:48:00

Job Ticket #: 01110 DST #: 1

Eagle Testers
1309 Patton Road Great Bend, Kansas 67530
620-791-7394

Printed: 2018.03.17 @ 13:16:48

Globe Operatingb Inc..

16-24s-14w Stafford

CDK Holdings #1

DST # 1

Kansas City "I"

2018.03.17



DRILL STEM TEST REPORT

Globe Operatingb Inc..

16-24s-14w Stafford

P.O. Box 12
Great Bend ,Kansas 67530

CDK Holdings #1

Job Ticket: 01110

DST#: 1

ATTN: Keith Reavis

Test Start: 2018.03.17 @ 07:03:00

GENERAL INFORMATION:

Formation: **Kansas City "I"**

Deviated: No Whipstock: ft (KB)

Time Tool Opened: 08:48:00

Time Test Ended: 12:48:00

Test Type: Conventional Bottom Hole (Initial)

Tester: Gene Budig

Unit No: 1

Interval: **3614.00 ft (KB) To 3468.00 ft (KB) (TVD)**

Reference Elevations: 1983.00 ft (KB)

Total Depth: 3868.00 ft (KB) (TVD)

1975.00 ft (CF)

Hole Diameter: 7.88 inches Hole Condition: Fair

KB to GR/CF: 8.00 ft

Serial #: 9139 Outside

Press@RunDepth: 1177.94 psig @ 3862.63 ft (KB)

Capacity: 5000.00 psig

Start Date: 2018.03.17

End Date:

2018.03.17

Last Calib.: 2018.03.17

Start Time: 07:04:00

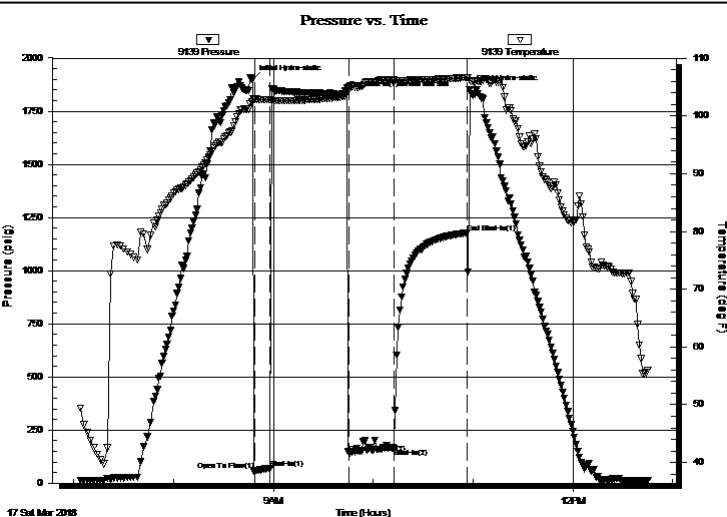
End Time:

12:45:00

Time On Btm: 2018.03.17 @ 08:47:30

Time Off Btm: 2018.03.17 @ 10:58:00

TEST COMMENT: 1st Opening 10 Minutes very weak building blow built to 2 inches into the water
1st Shut-In 45 Minutes no blow back
2nd Opening 30 Minutes very weak building blow built to 1 inch into the water
2nd Shut-In 45 Minutes no blow back



PRESSURE SUMMARY

Time (Min.)	Pressure (psig)	Temp (deg F)	Annotation
0	1897.57	102.53	Initial Hydro-static
1	58.23	102.93	Open To Flow (1)
11	69.75	102.85	Shut-In(1)
55	1824.88	103.35	End Shut-In(1)invalid tool slid
58	142.40	105.10	Open To Flow (2)
85	164.86	106.23	Shut-In(2)
129	1177.94	106.69	End Shut-In(1)
131	1853.23	106.11	Final Hydro-static

Recovery

Length (ft)	Description	Volume (bbl)
200.00	drilling mud	1.48

Gas Rates

	Choke (inches)	Pressure (psig)	Gas Rate (Mcf/d)
--	----------------	-----------------	------------------



DRILL STEM TEST REPORT

TOOL DIAGRAM

Globe Operatingb Inc..

16-24s-14w Stafford

P.O. Box 12
Great Bend ,Kansas 67530

CDK Holdings #1

Job Ticket: 01110

DST#: 1

ATTN: Keith Reavis

Test Start: 2018.03.17 @ 07:03:00

Tool Information

Drill Pipe:	Length: 3500.00 ft	Diameter: 3.80 inches	Volume: 49.10 bbl	Tool Weight: 2000.00 lb
Heavy Wt. Pipe:	Length: 312.00 ft	Diameter: 2.76 inches	Volume: 2.31 bbl	Weight set on Packer: 200000.0 lb
Drill Collar:	Length: 0.00 ft	Diameter: 2.25 inches	Volume: 0.00 bbl	Weight to Pull Loose: 68000.00 lb
		Total Volume:	51.41 bbl	Tool Chased 0.00 ft
Drill Pipe Above KB:	28.00 ft			String Weight: Initial 58000.00 lb
Depth to Top Packer:	3814.00 ft			Final 58000.00 lb
Depth to Bottom Packer:	ft			
Interval between Packers:	53.63 ft			
Tool Length:	83.63 ft			
Number of Packers:	2	Diameter:	6.76 inches	
Tool Comments:				

Tool Description

Tool Description	Length (ft)	Serial No.	Position	Depth (ft)	Accum. Lengths
Hydraulic tool	5.00			3789.00	
Shut In Tool	5.00			3794.00	
Jars	5.00			3799.00	
Safety Joint	5.00			3804.00	
Packer	5.00			3809.00	30.00 Bottom Of Top Packer
Packer	5.00		Fluid	3814.00	
Anchor	5.00			3819.00	
Change Over Sub	0.75			3819.75	
Drill Pipe	31.13			3850.88	
Change Over Sub	0.75		Inside	3851.63	
Anchor	11.00			3862.63	
Recorder	0.00	9119	Inside	3862.63	
Recorder	0.00	9139	Outside	3862.63	
Bullnose	5.00			3867.63	53.63 Bottom Packers & Anchor

Total Tool Length: 83.63



DRILL STEM TEST REPORT

FLUID SUMMARY

Globe Operatingb Inc..

16-24s-14w Stafford

P.O. Box 12
Great Bend ,Kansas 67530

CDK Holdings #1

Job Ticket: 01110

DST#: 1

ATTN: Keith Reavis

Test Start: 2018.03.17 @ 07:03:00

Mud and Cushion Information

Mud Type: Gel Chem

Mud Weight: 9.00 lb/gal

Viscosity: 67.00 sec/qt

Water Loss: 9.19 in³

Resistivity: ohm.m

Salinity: 8000.00 ppm

Filter Cake: 1.00 inches

Cushion Type:

Cushion Length:

Cushion Volume:

Gas Cushion Type:

Gas Cushion Pressure:

ft

bbl

psig

Oil API:

Water Salinity:

deg API

ppm

Recovery Information

Recovery Table

Length ft	Description	Volume bbl
200.00	drilling mud	1.480

Total Length: 200.00 ft

Total Volume: 1.480 bbl

Num Fluid Samples: 0

Num Gas Bombs: 0

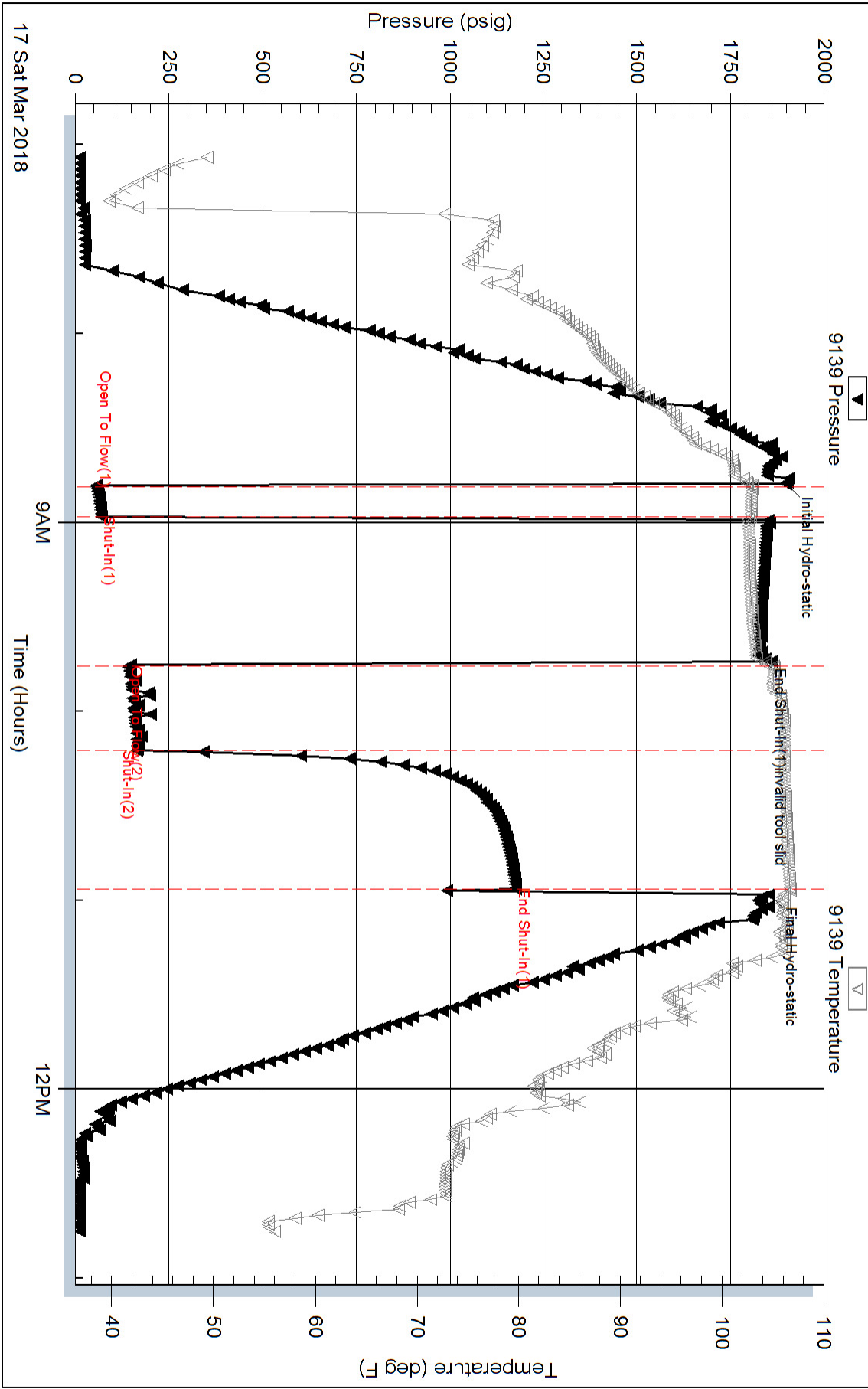
Serial #:

Laboratory Name:

Laboratory Location:

Recovery Comments:

Pressure vs. Time





DRILL STEM TEST REPORT

Prepared For: **Globe Operatingb Inc..**

P.O. Box 12
Great Bend ,Kansas 67530

ATTN: Keith Reavis

CDK Holdings #1

16-24s-14w Stafford

Start Date: 2018.03.19 @ 01:25:00

End Date: 2018.03.19 @ 00:00:00

Job Ticket #: 01110 DST #: 2

Eagle Testers
1309 Patton Road Great Bend, Kansas 67530
620-791-7394

Printed: 2018.03.19 @ 13:00:10



DRILL STEM TEST REPORT

Globe Operatingb Inc..

16-24s-14w Stafford

P.O. Box 12
Great Bend ,Kansas 67530

CDK Holdings #1

ATTN: Keith Reavis

Job Ticket: 01110

DST#: 2

Test Start: 2018.03.19 @ 01:25:00

GENERAL INFORMATION:

Formation: **Arbuckle**

Deviated: No Whipstock: ft (KB)

Time Tool Opened: 03:00:00

Time Test Ended: 00:00:00

Test Type: Conventional Bottom Hole (Initial)

Tester: Gene Budig

Unit No: 1

Interval: **4220.00 ft (KB) To 4287.00 ft (KB) (TVD)**

Reference Elevations: 1983.00 ft (KB)

Total Depth: 4287.00 ft (KB) (TVD)

1975.00 ft (CF)

Hole Diameter: 7.88 inches Hole Condition: Fair

KB to GR/CF: 8.00 ft

Serial #: **9139** Outside

Press@RunDepth: 1543.32 psig @ 4281.82 ft (KB)

Capacity: 5000.00 psig

Start Date: 2018.03.19

End Date:

2018.03.19

Last Calib.:

2018.03.19

Start Time: 01:40:00

End Time:

07:56:00

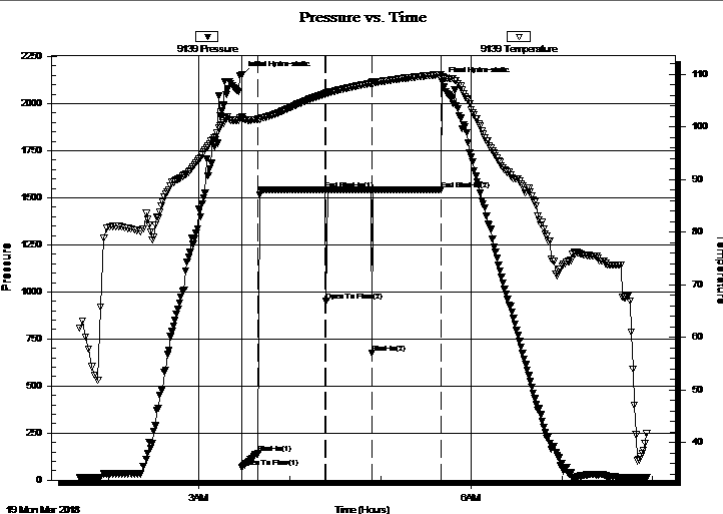
Time On Btm:

2018.03.19 @ 03:28:00

Time Off Btm:

2018.03.19 @ 05:41:00

TEST COMMENT: 1st Opening 10 Minutes fair blow built to 10 inches into the water
1st shut-In 45 Minutes no blow back
2ndn Opening 30 Minutes weak blow built to 2 inches ndeased tyo a weak surface blow
2nd Shut-In 45 Minutes no blow back



PRESSURE SUMMARY

Time (Min.)	Pressure (psig)	Temp (deg F)	Annotation
0	2151.09	101.67	Initial Hydro-static
1	69.60	101.90	Open To Flow (1)
11	142.47	101.48	Shut-In(1)
56	1543.22	106.28	End Shut-In(1)
56	952.75	106.43	Open To Flow (2)
87	675.46	108.58	Shut-In(2)
132	1543.32	109.97	End Shut-In(2)
133	2116.01	109.43	Final Hydro-static

Recovery

Length (ft)	Description	Volume (bbl)
90.00	oil cut mud 10% Oil 80%Mud 10%Water	1.26
0.00	Chlorides 19,200	0.00
60.00	Oil cut w atery mud20%Oil40%Mud40%W0.84	
0.00	Chlorides 21,000	0.00
0.00	chlorides w as chedcked by Rick Hughs	0.00
0.00	w ith Mud Co	0.00

Gas Rates

	Choke (inches)	Pressure (psig)	Gas Rate (Mcf/d)
--	----------------	-----------------	------------------



DRILL STEM TEST REPORT

TOOL DIAGRAM

Globe Operatingb Inc..

16-24s-14w Stafford

P.O. Box 12
Great Bend ,Kansas 67530

CDK Holdings #1

Job Ticket: 01110

DST#: 2

ATTN: Keith Reavis

Test Start: 2018.03.19 @ 01:25:00

Tool Information

Drill Pipe:	Length: 4217.00 ft	Diameter: 3.80 inches	Volume: 59.15 bbl	Tool Weight: 20000.00 lb
Heavy Wt. Pipe:	Length: 0.00 ft	Diameter: 2.76 inches	Volume: 0.00 bbl	Weight set on Packer: 2000.00 lb
Drill Collar:	Length: 0.00 ft	Diameter: 2.25 inches	Volume: 0.00 bbl	Weight to Pull Loose: 72000.00 lb
		Total Volume: 59.15 bbl		Tool Chased 0.00 ft
Drill Pipe Above KB:	27.00 ft			String Weight: Initial 61000.00 lb
Depth to Top Packer:	4220.00 ft			Final 61000.00 lb
Depth to Bottom Packer:	ft			
Interval betw een Packers:	66.82 ft			
Tool Length:	96.82 ft			
Number of Packers:	2	Diameter: 6.75 inches		
Tool Comments:				

Tool Description

Tool Description	Length (ft)	Serial No.	Position	Depth (ft)	Accum. Lengths
Shut In Tool	5.00			4195.00	
Hydraulic tool	5.00			4200.00	
Jars	5.00			4205.00	
Safety Joint	5.00			4210.00	
Packer	5.00			4215.00	30.00 Bottom Of Top Packer
Packer	5.00		Fluid	4220.00	
Anchor	5.00			4225.00	
Change Over Sub	0.75			4225.75	
Drill Pipe	31.32			4257.07	
Change Over Sub	0.75		Inside	4257.82	
Anchor	24.00			4281.82	
Recorder	0.00	9119	Inside	4281.82	
Recorder	0.00	9139	Outside	4281.82	
Bullnose	5.00			4286.82	66.82 Bottom Packers & Anchor

Total Tool Length: 96.82



DRILL STEM TEST REPORT

FLUID SUMMARY

Globe Operatingb Inc..

16-24s-14w Stafford

P.O. Box 12
Great Bend ,Kansas 67530

CDK Holdings #1

Job Ticket: 01110

DST#:2

ATTN: Keith Reavis

Test Start: 2018.03.19 @ 01:25:00

Mud and Cushion Information

Mud Type: Gel Chem

Mud Weight: 9.00 lb/gal

Viscosity: 49.00 sec/qt

Water Loss: 11.20 in³

Resistivity: ohm.m

Salinity: 11000.00 ppm

Filter Cake: 1.00 inches

Cushion Type:

Cushion Length:

Cushion Volume:

Gas Cushion Type:

Gas Cushion Pressure:

Oil API:

Water Salinity:

deg API

ppm

Recovery Information

Recovery Table

Length ft	Description	Volume bbl
90.00	oil cut mud 10% Oil 80%Mud 10%Water	1.262
0.00	Chlorides 19,200	0.000
60.00	Oil cut w atery mud20%Oil40%Mud40%Water	0.842
0.00	Chlorides 21,000	0.000
0.00	chlorides w as chedcked by Rick Hughs	0.000
0.00	with Mud Co	0.000

Total Length: 150.00 ft Total Volume: 2.104 bbl

Num Fluid Samples: 0

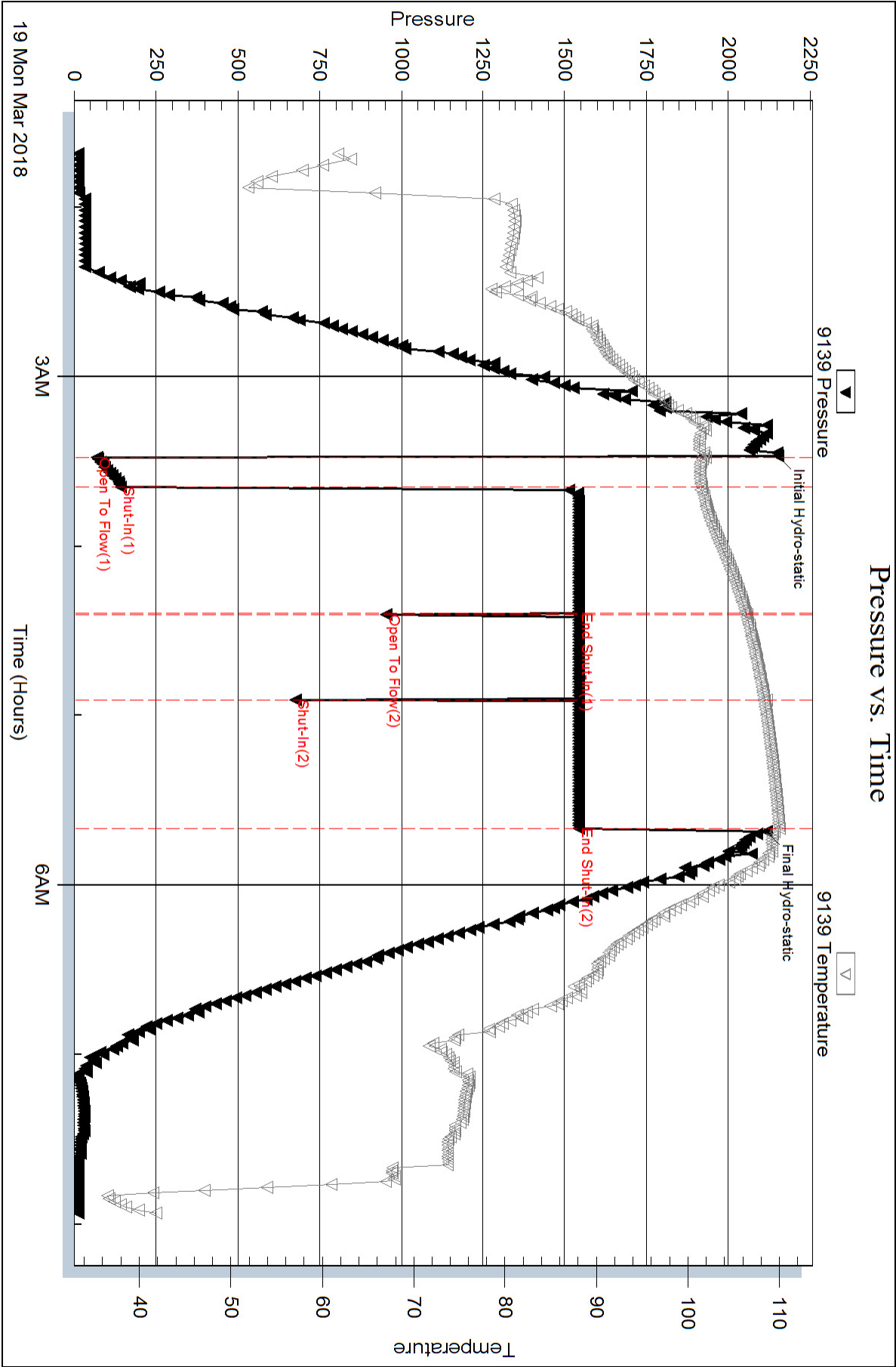
Num Gas Bombs: 0

Serial #:

Laboratory Name:

Laboratory Location:

Recovery Comments: tool Plugged after the first flow





DRILL STEM TEST REPORT

Prepared For: **Globe Operatingb Inc..**

P.O. Box 12
Great Bend ,Kansas 67530

ATTN: Keith Reavis

CDK Holdings #1

16-24s-14w Stafford

Start Date: 2018.03.19 @ 09:34:00

End Date: 2018.03.19 @ 00:00:00

Job Ticket #: 01112 DST #: 3

Eagle Testers
1309 Patton Road Great Bend, Kansas 67530
620-791-7394

Printed: 2018.03.19 @ 16:28:45



DRILL STEM TEST REPORT

Globe Operatingb Inc..

16-24s-14w Stafford

P.O. Box 12
Great Bend ,Kansas 67530

CDK Holdings #1

Job Ticket: 01112

DST#: 3

ATTN: Keith Reavis

Test Start: 2018.03.19 @ 09:34:00

GENERAL INFORMATION:

Formation: **Arbuckle**

Deviated: No Whipstock: ft (KB)

Time Tool Opened: 11:16:00

Time Test Ended: 00:00:00

Test Type: Conventional Bottom Hole (Initial)

Tester: Gene Budig

Unit No: 1

Interval: **4218.00 ft (KB) To 4287.00 ft (KB) (TVD)**

Reference Elevations: 1983.00 ft (KB)

Total Depth: 4287.00 ft (KB) (TVD)

1975.00 ft (CF)

Hole Diameter: 7.88 inches Hole Condition: Fair

KB to GR/CF: 8.00 ft

Serial #: **9119** Inside

Press@RunDepth: 1533.13 psig @ 4282.28 ft (KB)

Capacity: 5000.00 psig

Start Date: 2018.03.19

End Date:

2018.03.19

Last Calib.:

2018.03.19

Start Time: 09:33:00

End Time:

15:51:00

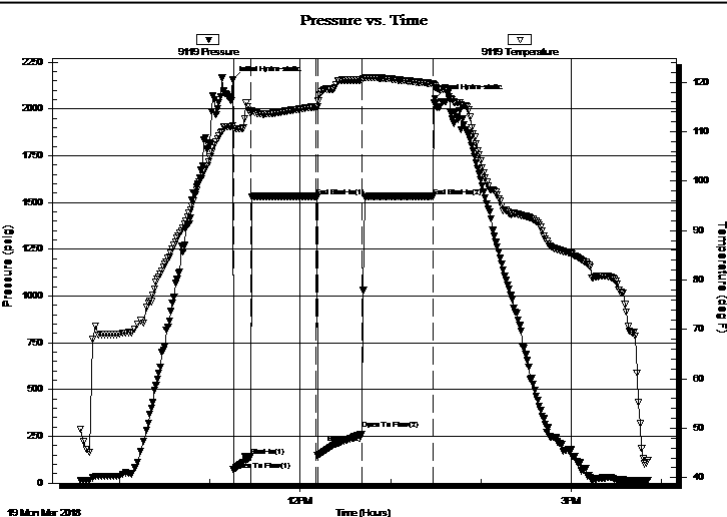
Time On Btm:

2018.03.19 @ 11:15:00

Time Off Btm:

2018.03.19 @ 13:29:30

TEST COMMENT: 1st Opening 10 Minutes fair blow built to 9 inches into the water
1st Shut-In 45 minutes no blow back
2nd Opening 30 Minutes Fair Blow built to the bottom of the bucket in 18 Minutes
2nd Shut-In 45 Minutes no blow back



PRESSURE SUMMARY

Time (Min.)	Pressure (psig)	Temp (deg F)	Annotation
0	2154.34	111.17	Initial Hydro-static
1	71.54	110.59	Open To Flow (1)
12	141.88	113.73	Shut-In(1)
56	1533.24	115.08	End Shut-In(1)
57	145.39	115.06	Open To Flow (2)
86	262.98	120.41	Shut-In(2)
134	1533.13	119.74	End Shut-In(2)
135	2054.17	119.21	Final Hydro-static

Recovery

Length (ft)	Description	Volume (bbl)
5.00	Clean Oil	0.07
60.00	slightly oil cut mud 5%Oil 95% Mud	0.84
120.00	oil cut muddy w ater20%Oil30%Mud50%w	1.68 r
120.00	oil cut muddy w ater15%oil15%mud70%w	1.68
120.00	oil cut muddy w ater10%Oil10%mud80%w	1.68 r
0.00	chlorides 18,000	0.00

Gas Rates

	Choke (inches)	Pressure (psig)	Gas Rate (Mcf/d)
--	----------------	-----------------	------------------



DRILL STEM TEST REPORT

Globe Operatingb Inc..

16-24s-14w Stafford

P.O. Box 12
Great Bend ,Kansas 67530

CDK Holdings #1

Job Ticket: 01112

DST#: 3

ATTN: Keith Reavis

Test Start: 2018.03.19 @ 09:34:00

GENERAL INFORMATION:

Formation: **Arbuckle**

Deviated: No Whipstock: ft (KB)

Time Tool Opened: 11:16:00

Time Test Ended: 00:00:00

Test Type: Conventional Bottom Hole (Initial)

Tester: Gene Budig

Unit No: 1

Interval: **4218.00 ft (KB) To 4287.00 ft (KB) (TVD)**

Reference Elevations: 1983.00 ft (KB)

Total Depth: 4287.00 ft (KB) (TVD)

1975.00 ft (CF)

Hole Diameter: 7.88 inches Hole Condition: Fair

KB to GR/CF: 8.00 ft

Serial #: 9139 Outside

Press@RunDepth: 1542.60 psig @ 4282.28 ft (KB)

Capacity: 5000.00 psig

Start Date: 2018.03.19

End Date:

2018.03.19

Last Calib.:

2018.03.19

Start Time: 09:33:00

End Time:

15:51:29

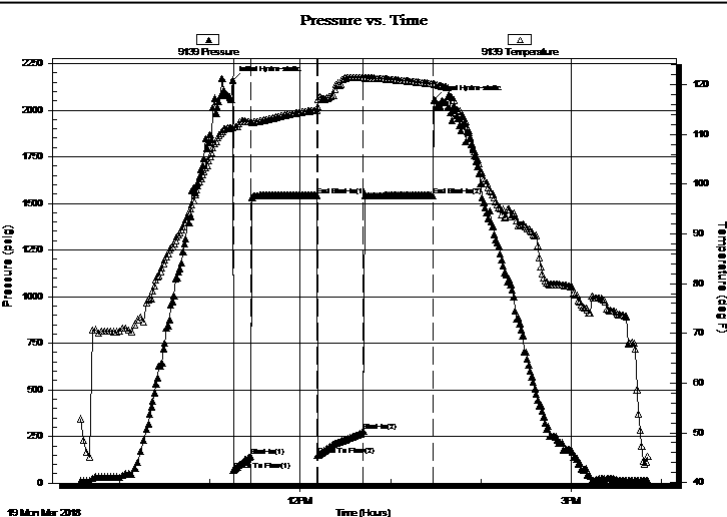
Time On Btm:

2018.03.19 @ 11:15:00

Time Off Btm:

2018.03.19 @ 13:29:00

TEST COMMENT: 1st Opening 10 Minutes fair blow built to 9 inches into the water
1st Shut-In 45 minutes no blow back
2nd Opening 30 Minutes Fair Blow built to the bottom of the bucket in 18 Minutes
2nd Shut-In 45 Minutes no blow back



PRESSURE SUMMARY

Time (Min.)	Pressure (psig)	Temp (deg F)	Annotation
0	2160.49	111.37	Initial Hydro-static
1	68.77	111.65	Open To Flow (1)
12	143.08	112.61	Shut-In(1)
56	1543.00	114.85	End Shut-In(1)
57	147.43	115.61	Open To Flow (2)
87	278.71	121.43	Shut-In(2)
134	1542.60	120.19	End Shut-In(2)
134	2054.19	120.13	Final Hydro-static

Recovery

Length (ft)	Description	Volume (bbl)
5.00	Clean Oil	0.07
60.00	slightly oil cut mud 5%Oil 95% Mud	0.84
120.00	oil cut muddy w ater20%Oil30%Mud50%w	1.68 r
120.00	oil cut muddy w ater15%oil15%mud70%w	1.68
120.00	oil cut muddy w ater10%Oil10%mud80%w	1.68 r
0.00	chlorides 18,000	0.00

Gas Rates

	Choke (inches)	Pressure (psig)	Gas Rate (Mcf/d)
--	----------------	-----------------	------------------



DRILL STEM TEST REPORT

TOOL DIAGRAM

Globe Operatingb Inc..

16-24s-14w Stafford

P.O. Box 12
Great Bend ,Kansas 67530

CDK Holdings #1

Job Ticket: 01112

DST#: 3

ATTN: Keith Reavis

Test Start: 2018.03.19 @ 09:34:00

Tool Information

Drill Pipe:	Length: 4216.00 ft	Diameter: 3.80 inches	Volume: 59.14 bbl	Tool Weight: 20009.00 lb
Heavy Wt. Pipe:	Length: 0.00 ft	Diameter: 2.76 inches	Volume: 0.00 bbl	Weight set on Packer: 20000.00 lb
Drill Collar:	Length: 0.00 ft	Diameter: 2.25 inches	Volume: 0.00 bbl	Weight to Pull Loose: 64000.00 lb
		Total Volume: 59.14 bbl		Tool Chased 0.00 ft
Drill Pipe Above KB:	28.00 ft			String Weight: Initial 61000.00 lb
Depth to Top Packer:	4218.00 ft			Final 61000.00 lb
Depth to Bottom Packer:	ft			
Interval betw een Packers:	69.28 ft			
Tool Length:	99.28 ft			
Number of Packers:	2	Diameter: 6.75 inches		

Tool Comments:

Tool Description

Tool Description	Length (ft)	Serial No.	Position	Depth (ft)	Accum. Lengths
Shut In Tool	5.00			4193.00	
Hydraulic tool	5.00			4198.00	
Jars	5.00			4203.00	
Safety Joint	5.00			4208.00	
Packer	5.00			4213.00	30.00 Bottom Of Top Packer
Packer	5.00		Fluid	4218.00	
Anchor	5.00			4223.00	
Change Over Sub	0.75			4223.75	
Drill Pipe	31.78			4255.53	
Change Over Sub	0.75		Inside	4256.28	
Anchor	26.00			4282.28	
Recorder	0.00	9119	Inside	4282.28	
Recorder	0.00	9139	Outside	4282.28	
Bullnose	5.00			4287.28	69.28 Bottom Packers & Anchor

Total Tool Length: 99.28



DRILL STEM TEST REPORT

FLUID SUMMARY

Globe Operatingb Inc..

16-24s-14w Stafford

P.O. Box 12
Great Bend ,Kansas 67530

CDK Holdings #1

Job Ticket: 01112

DST#: 3

ATTN: Keith Reavis

Test Start: 2018.03.19 @ 09:34:00

Mud and Cushion Information

Mud Type: Gel Chem

Mud Weight: 9.00 lb/gal

Viscosity: 64.00 sec/qt

Water Loss: 10.40 in³

Resistivity: ohm.m

Salinity: 11000.00 ppm

Filter Cake: 1.00 inches

Cushion Type:

Cushion Length:

Cushion Volume:

Gas Cushion Type:

Gas Cushion Pressure:

ft

bbl

psig

Oil API:

Water Salinity:

deg API

ppm

Recovery Information

Recovery Table

Length ft	Description	Volume bbl
5.00	Clean Oil	0.070
60.00	slightly oil cut mud 5%Oil 95% Mud	0.842
120.00	oil cut muddy w ater20%Oil30%Mud50%w ater	1.683
120.00	oil cut muddy w ater15%oil15%mud70%w ater	1.683
120.00	oil cut muddy w ater10%Oil10%mud80%Wate	1.683
0.00	chlorides 18,000	0.000

Total Length: 425.00 ft

Total Volume: 5.961 bbl

Num Fluid Samples: 0

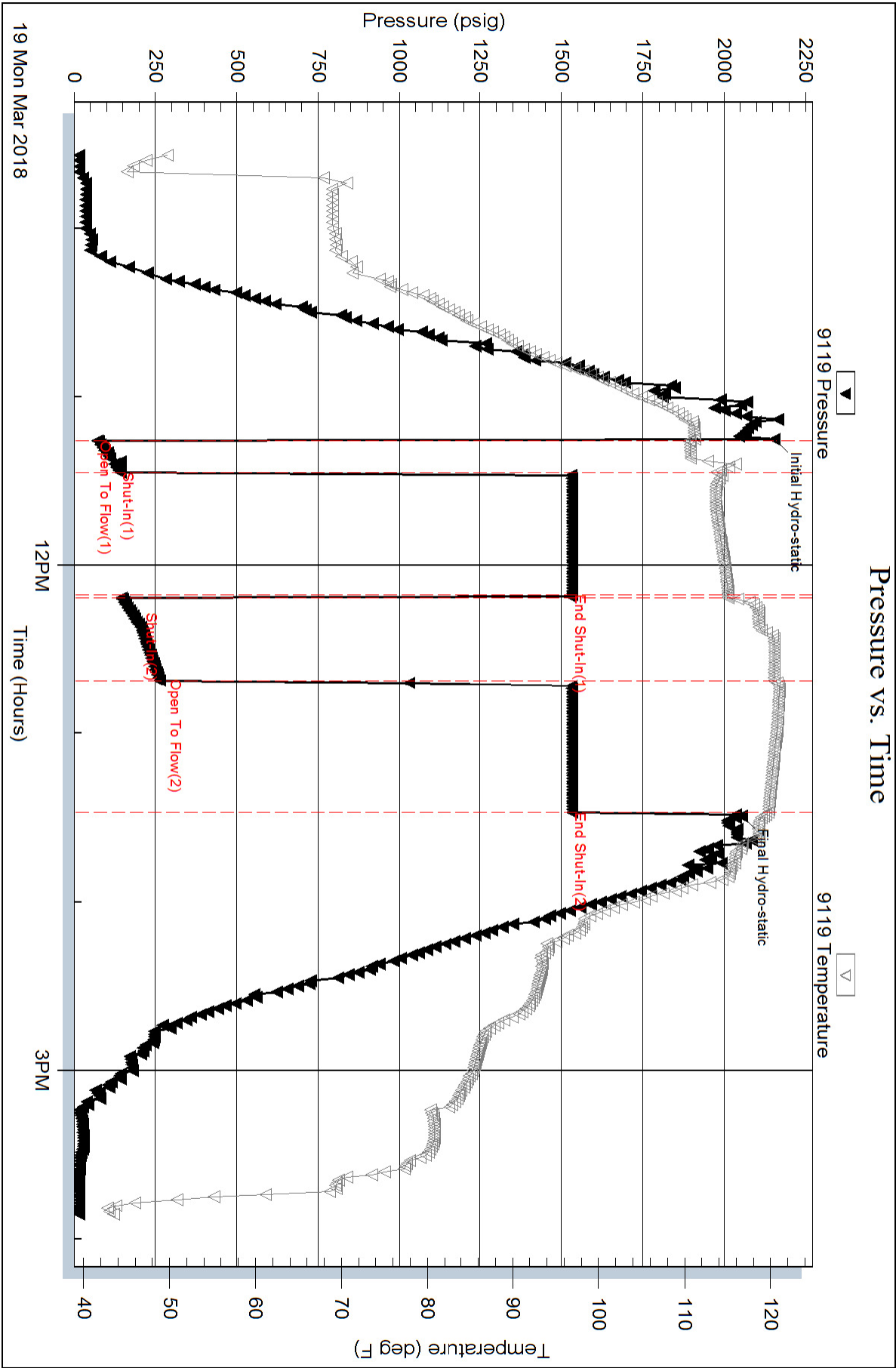
Num Gas Bombs: 0

Serial #:

Laboratory Name:

Laboratory Location:

Recovery Comments:



Pressure vs. Time

