

KANSAS CORPORATION COMMISSION
OIL & GAS CONSERVATION DIVISION

TEMPORARY ABANDONMENT WELL APPLICATION

OPERATOR: License#
Name:
Address 1:
Address 2:
City: State: Zip:
Contact Person:
Phone:
Contact Person Email:
Field Contact Person:
Field Contact Person Phone:

API No. 15-
Spot Description:
Sec. Twp. S. R.
feet from N / S Line of Section
feet from E / W Line of Section
GPS Location: Lat: , Long:
Datum: NAD27 NAD83 WGS84
County: Elevation: GL KB
Lease Name: Well #:
Well Type: Oil Gas OG WSW Other:
SWD Permit #: ENHR Permit #:
Gas Storage Permit #:
Spud Date: Date Shut-In:

Table with 7 columns: Conductor, Surface, Production, Intermediate, Liner, Tubing. Rows include Size, Setting Depth, Amount of Cement, Top of Cement, Bottom of Cement.

Casing Fluid Level from Surface: How Determined? Date:
Casing Squeeze(s): to w / sacks of cement, to w / sacks of cement. Date:
Do you have a valid Oil & Gas Lease? Yes No
Depth and Type: Junk in Hole at Tools in Hole at Casing Leaks: Yes No Depth of casing leak(s):
Type Completion: ALT. I ALT. II Depth of: DV Tool: w / sacks of cement Port Collar: w / sack of cement
Packer Type: Size: Inch Set at: Feet
Total Depth: Plug Back Depth: Plug Back Method:

Geological Date:

Table with 4 columns: Formation Name, Formation Top, Formation Base, Completion Information. Rows 1 and 2.

UNDER PENALTY OF PERJURY I HEREBY ATTEST THAT THE INFORMATION CONTAINED HEREIN IS TRUE AND CORRECT TO THE BEST OF MY KNOWLEDGE

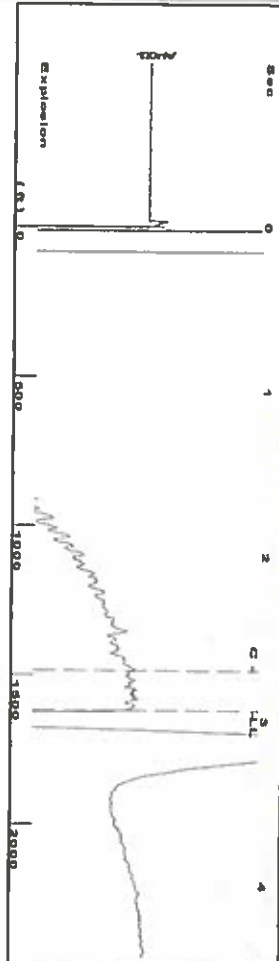
Submitted Electronically

Do NOT Write in This Space - KCC USE ONLY
Date Tested: Results: Date Plugged: Date Repaired: Date Put Back in Service:
Review Completed by: Comments:
TA Approved: Yes Denied Date:

Mail to the Appropriate KCC Conservation Office:

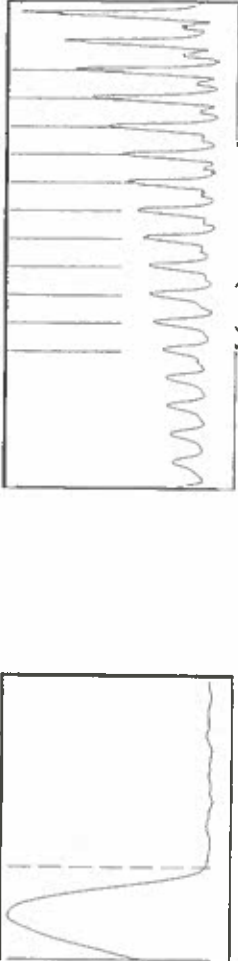
Table with 2 columns: Office Address, Phone. Rows for KCC District Office #1, #2, #3, #4.

Group: Oxy USA Ulysses Well: Williams 5L (acquired on: 04/11/18 10:53:41)



Filter Type High Pass Automatic Collar Count Yes
 Manual Acoustic Velocity 098.79 ft/s Manual JTS/sec 17.331
 Time 2.935 sec
 Joints 51.0224 Jts
 Depth 1617.41 ft

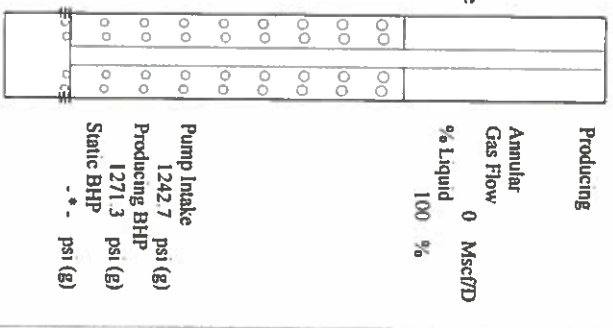
[0.5 to 1.5 (Sec)]



Analysis Method: Automatic

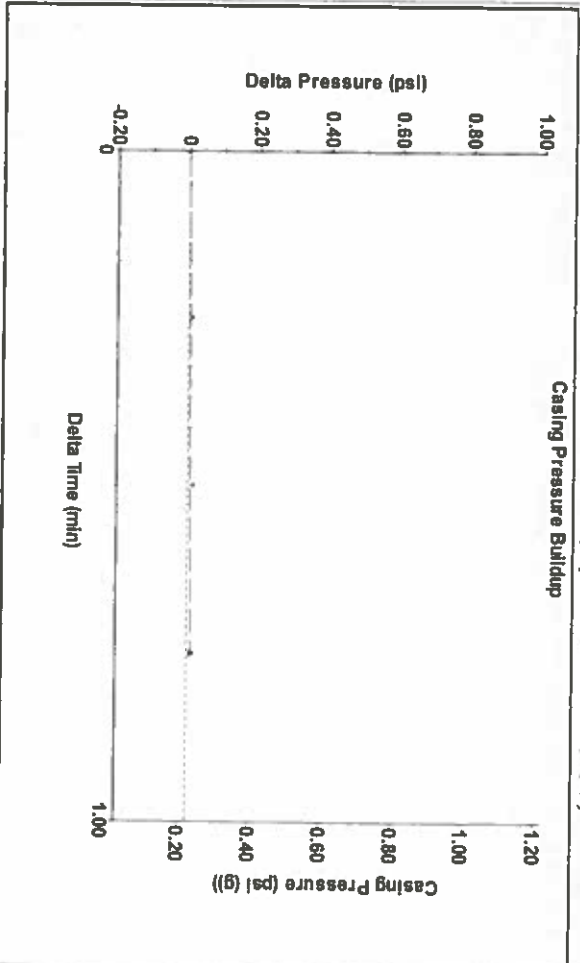
Group: Oxy USA Ulysses Well: Williams 5L (acquired on: 04/11/18 10:53:41)

Production	Potential	Casing Pressure	Producing
Current	BBL/D	0.2 psi (g)	Annular
Oil	BBL/D	Casing Pressure Buildup	Gas Flow
Water	MscFD	0.011 psi	% Liquid
Gas		0.75 min	100 %
		Gas/Liquid Interface Pressure	
		1.0 psi (g)	
IPR Method	Vogel	Liquid Level Depth	
PBHP/SBHP		1617.41 ft	
Production Efficiency	0.0		
Oil	40 deg API	Pump Intake Depth	
Water	1.05 Sp.Gr.H2O	5453.00 ft	
Gas	0.87 Sp.Gr.AIR	Formation Depth	
		5516.00 ft	
Acoustic Velocity	1102.15 ft/s		



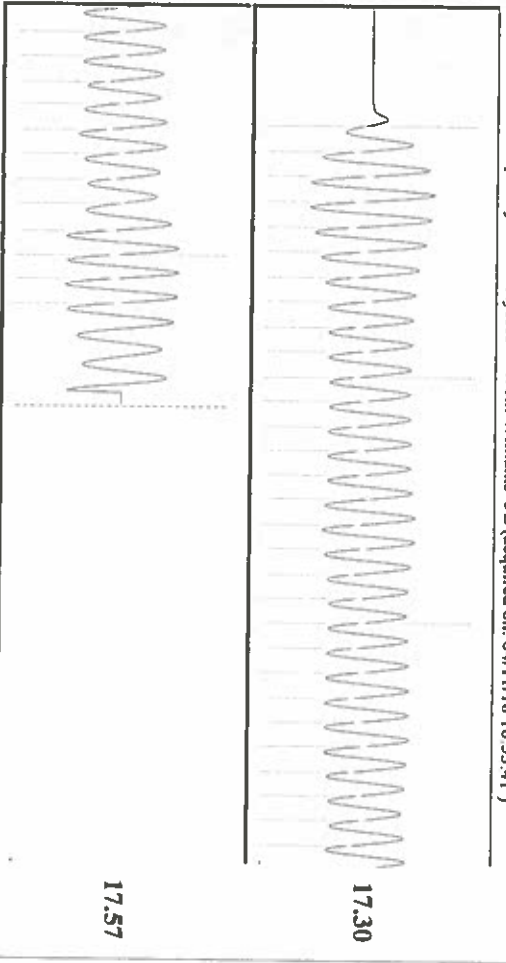
Formation Submergence 3836 ft
 Total Gaseous Liquid Column HT (TVD) 3836 ft
 Equivalent Gas Free Liquid HT (TVD) 3836 ft
 Acoustic Test
 Tim Frydendall-Fluid Level Technician

Group: Oxy USA Ulysses Well: Williams 5L (acquired on: 04/11/18 10:53:41)



Change in Pressure 0.01 psi
 Change in Time 0.75 min
 PT9522 Range
 0 - 7 psi

Group: Oxy USA Ulysses Well: Williams 5L (acquired on: 04/11/18 10:53:41)



Acoustic Velocity	1102.15 ft/s	Joints counted	42
Joints Per Second	17.3841 Jts/sec	Joints to liquid level	51.0224
Depth to liquid level	1617.41 ft	Filter Width	15.331
Automatic Collar Count	Yes	Time to 1st Collar	0.276
			19.331
			2.692

STATE OF KANSAS

CORPORATION COMMISSION
CONSERVATION DIVISION
DISTRICT No. 1
210 E. FRONTVIEW, SUITE A
DODGE CITY, KS 67801



PHONE: 620-682-7933
<http://kcc.ks.gov/>

GOVERNOR JEFF COLYER, M.D.

SHARI FEIST ALBRECHT, CHAIR | JAY SCOTT EMLER, COMMISSIONER | DWIGHT D. KEEN, COMMISSIONER

April 17, 2018

Katherine McClurkan
Merit Energy Company, LLC
13727 Noel Road, Suite 1200
Dallas, TX 75240

Re: Temporary Abandonment
API 15-187-21109-00-00
Williams 5-L21-29-39
SW/4 Sec.21-29S-39W
Stanton County, Kansas

Dear Katherine McClurkan:

"Your temporary abandonment (TA) application for the well listed above has been approved. In accordance with K.A.R. 82-3-111 the TA status of this well will expire 04/17/2019.

- * If you return this well to service or plug it, please notify the District Office.
- * If you sell this well you are required to file a Transfer of Operator form, T-1.
- * If the well will remain temporarily abandoned, you must submit a new TA application, CP-111, before 04/17/2019.

You may contact me at the number above if you have questions.

Very truly yours,

Michael Maier"