

KANSAS CORPORATION COMMISSION
OIL & GAS CONSERVATION DIVISION

TEMPORARY ABANDONMENT WELL APPLICATION

OPERATOR: License#
Name:
Address 1:
Address 2:
City: State: Zip:
Contact Person:
Phone:
Contact Person Email:
Field Contact Person:
Field Contact Person Phone:

API No. 15-
Spot Description:
Sec. Twp. S. R.
GPS Location: Lat: Long:
Datum: NAD27 NAD83 WGS84
County: Elevation:
Lease Name: Well #:
Well Type: Oil Gas OG WSW Other:
SWD Permit #: ENHR Permit #:
Gas Storage Permit #:
Spud Date: Date Shut-In:

Table with 7 columns: Conductor, Surface, Production, Intermediate, Liner, Tubing. Rows include Size, Setting Depth, Amount of Cement, Top of Cement, Bottom of Cement.

Casing Fluid Level from Surface: How Determined? Date:
Casing Squeeze(s): to w / sacks of cement, to w / sacks of cement. Date:
Do you have a valid Oil & Gas Lease? Yes No
Depth and Type: Junk in Hole at Tools in Hole at Casing Leaks: Yes No Depth of casing leak(s):
Type Completion: ALT. I ALT. II Depth of: DV Tool: w / sacks of cement Port Collar: w / sack of cement
Packer Type: Size: Inch Set at: Feet
Total Depth: Plug Back Depth: Plug Back Method:

Geological Data:

Table with 4 columns: Formation Name, Formation Top, Formation Base, Completion Information. Rows 1 and 2.

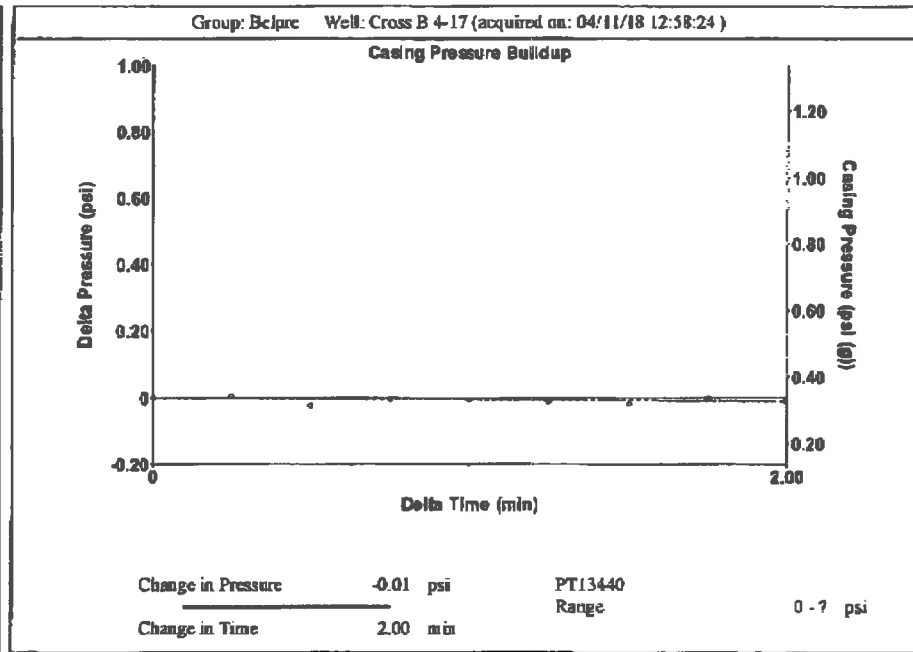
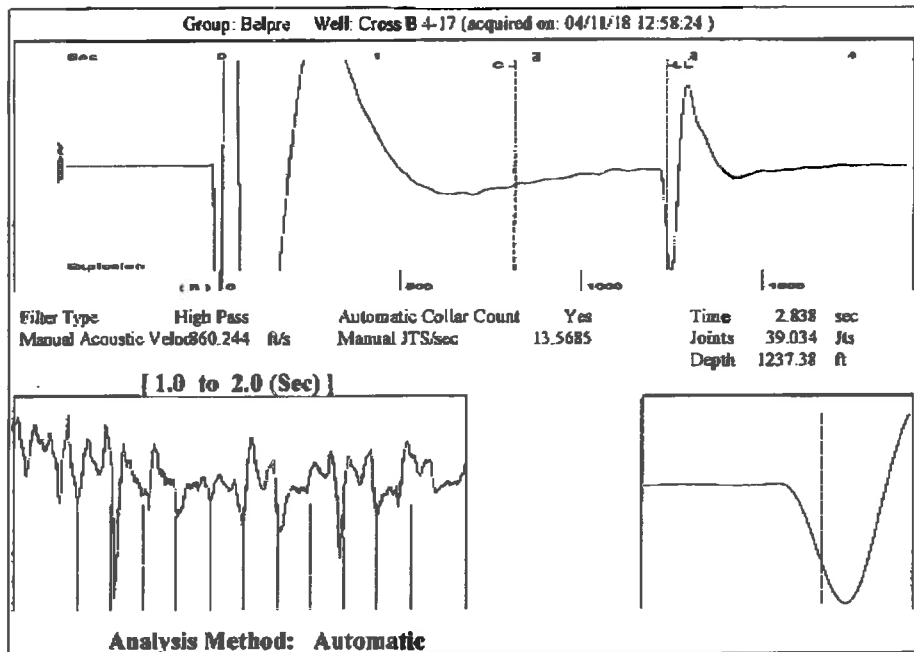
UNDER PENALTY OF PERJURY I HEREBY ATTEST THAT THE INFORMATION CONTAINED HEREIN IS TRUE AND CORRECT TO THE BEST OF MY KNOWLEDGE

Submitted Electronically

Do NOT Write in This Space - KCC USE ONLY
Date Tested: Results: Date Plugged: Date Repaired: Date Put Back in Service:
Review Completed by: Comments:
TA Approved: Yes Denied Date:

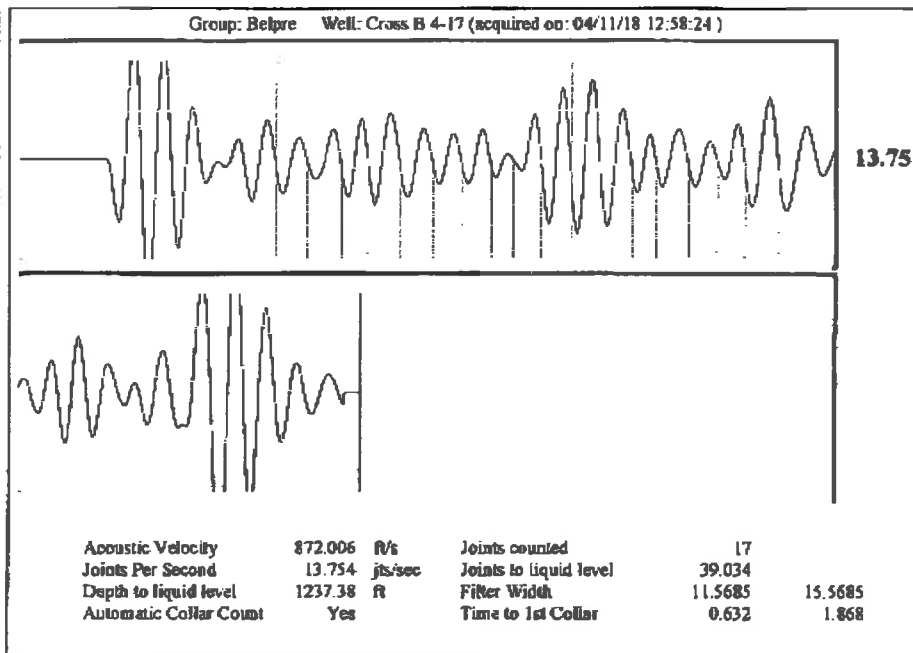
Mail to the Appropriate KCC Conservation Office:

Map of Kansas with 4 numbered districts. Table with 3 columns: District Office Name, Address, Phone Number.



Group: Belpre Well: Cross B 4-17 (acquired on: 04/11/18 12:58:24)

Production Current	Potential	Casing Pressure	Producing
Oil . . .	. . . BBL/D	0.3 psi (g)	
Water . . .	. . . BBL/D	Casing Pressure Buildup	Annular Gas Flow
Gas . . .	. . . Mscf/D	-0.010 psi	. . . Mscf/D
		2.00 min	% Liquid
IPR Method	Vogel	Gas/Liquid Interface Pressure	100 %
PBHP/SBHP	. . .	1.1 psi (g)	
Production Efficiency	0.0	Liquid Level Depth	
Oil 40 deg API		1237.38 ft	
Water 1.05 Sp.Gr.H2O		Pump Intake Depth	
Gas 1.09 Sp.Gr.AIR		. . . ft	
Acoustic Velocity	872.006 ft/s	Formation Depth	
		4390.00 ft	
Formation Submergence		Pump Intake	
Total Gaseous Liquid Column HT (TVD)	3153 ft	. . . psi (g)	
Equivalent Gas Free Liquid HT (TVD)	3153 ft	Producing BHP	
Acoustic Test		1434.4 psi (g)	
		Static BHP	
		. . . psi (g)	



# STATE OF KANSAS

CORPORATION COMMISSION  
CONSERVATION DIVISION  
DISTRICT No. 1  
210 E. FRONTVIEW, SUITE A  
DODGE CITY, KS 67801



PHONE: 620-682-7933  
<http://kcc.ks.gov/>

GOVERNOR JEFF COLYER, M.D.

SHARI FEIST ALBRECHT, CHAIR | JAY SCOTT EMLER, COMMISSIONER | DWIGHT D. KEEN, COMMISSIONER

April 17, 2018

Margery L. Nagel  
F. G. Holl Company L.L.C.  
9431 E CENTRAL STE 100  
WICHITA, KS 67206-2563

Re: Temporary Abandonment  
API 15-047-21463-00-00  
CROSS W.B. B 4-17  
SE/4 Sec.17-24S-17W  
Edwards County, Kansas

Dear Margery L. Nagel:

"Your temporary abandonment (TA) application for the well listed above has been approved. In accordance with K.A.R. 82-3-111 the TA status of this well will expire 04/17/2019.

- \* If you return this well to service or plug it, please notify the District Office.
- \* If you sell this well you are required to file a Transfer of Operator form, T-1.
- \* If the well will remain temporarily abandoned, you must submit a new TA application, CP-111, before 04/17/2019.

You may contact me at the number above if you have questions.

Very truly yours,

Michael Maier"