

# LITHOLOGY STRIP LOG

## WellSight Systems

Scale 1:240 (5"=100') Imperial

Measured Depth Log

Well Name: Pochop#1-8

Well Id:

Location: SWSE Section 8 3S-35W Rawlins County, Kansas

License Number: 15-153-21204

Region: Midcontinent

Spud Date: 11-5-2017

Drilling Completed: 11-18-2017

Surface Coordinates: 680' FSL & 1930' FEL

Bottom Hole

Coordinates:

Ground Elevation (ft): 3242

K.B. Elevation (ft): 3250

Logged Interval (ft): 3500

To: 4870

Total Depth (ft): 4870

Formation: LKC, Pawnee, Cherokee, & mississippian

Type of Drilling Fluid: WBM

Printed by WellSight Log Viewer from WellSight Systems 1-800-447-1534 www.WellSight.com

### OPERATOR

Company: Berexco, LLC.

Address: 2020 N. Bramblewood  
Wichita, Kansas 67206

### GEOLOGIST

Name: William B. Bynog

Company:

Address: P.O.Box 687  
Pinecliffe, Co. 80471

### LOG TOPS

LOG TOTAL DEPTH IS 6 FEET SHALLOW TO RIG TOTAL DEPTH, SO THE SAMPLE LOG TOPS ARE APPROXIMATELY 6 FEET DEEPER. SLIDE SAMPLE LOG UP OR DOWN TO FIT LOG DEPTH.


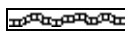
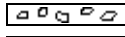
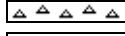
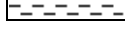
### DSTs


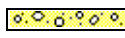



DST#1 4090-4190, DST#2 4218-4288, DST#3 4318-4375, DST#4 4520-71



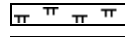
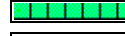
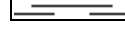
### Comments

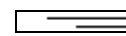
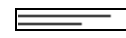



RAN 4 1/2 " PRODUCTION CASING

### ROCK TYPES

 Anhy  
 Bent  
 Brec  
 Cht  
 Clyst

 Coal  
 Congl  
 Dol  
 Gyp  
 Igne

 Lmst  
 Meta  
 Mrlst  
 Salt  
 Shale

 Shcol  
 Shgy  
 Sltst  
 Ss  
 Till

### ACCESSORIES

#### MINERAL

- Anhy
- Arggrn
- Arg
- Bent
- Bit
- Breclfrag
- Calc
- Carb
- Chtdk
- Chtlt
- Dol
- Feldspar
- Ferrpel
- Ferr
- Glau
- Gyp
- Hvymin
- Kaol
- Marl

- Minxl
- Nodule
- Phos
- Pyr
- Salt
- Sandy
- Silt
- Sil
- Sulphur
- Tuff

#### FOSSIL

- Algae
- Amph
- Belm
- Bioclst
- Brach
- Bryozoa
- Cephal
- Coral

- Crin
- Echin
- Fish
- Foram
- Fossil
- Gastro
- Oolite
- Ostra
- Pelec
- Pellet
- Pisolite
- Plant
- Strom

#### STRINGER

- Anhy
- Arg
- Bent
- Coal
- Dol

- Gyp
- Ls
- Mrst
- Sltstrg
- Ssstrg

#### TEXTURE

- Boundst
- Chalky
- Cryxln
- Earthy
- Finexln
- Grainst
- Lithogr
- Microxln
- Mudst
- Packst
- Wackest

### OTHER SYMBOLS

#### POROSITY

- Earthy
- Fenest
- Fracture
- Inter
- Moldic
- Organic
- Pinpoint
- Vuggy

#### SORTING

- Well
- Moderate
- Poor

#### ROUNDING

- Rounded
- Subrnd
- Subang

- Angular

#### OIL SHOW

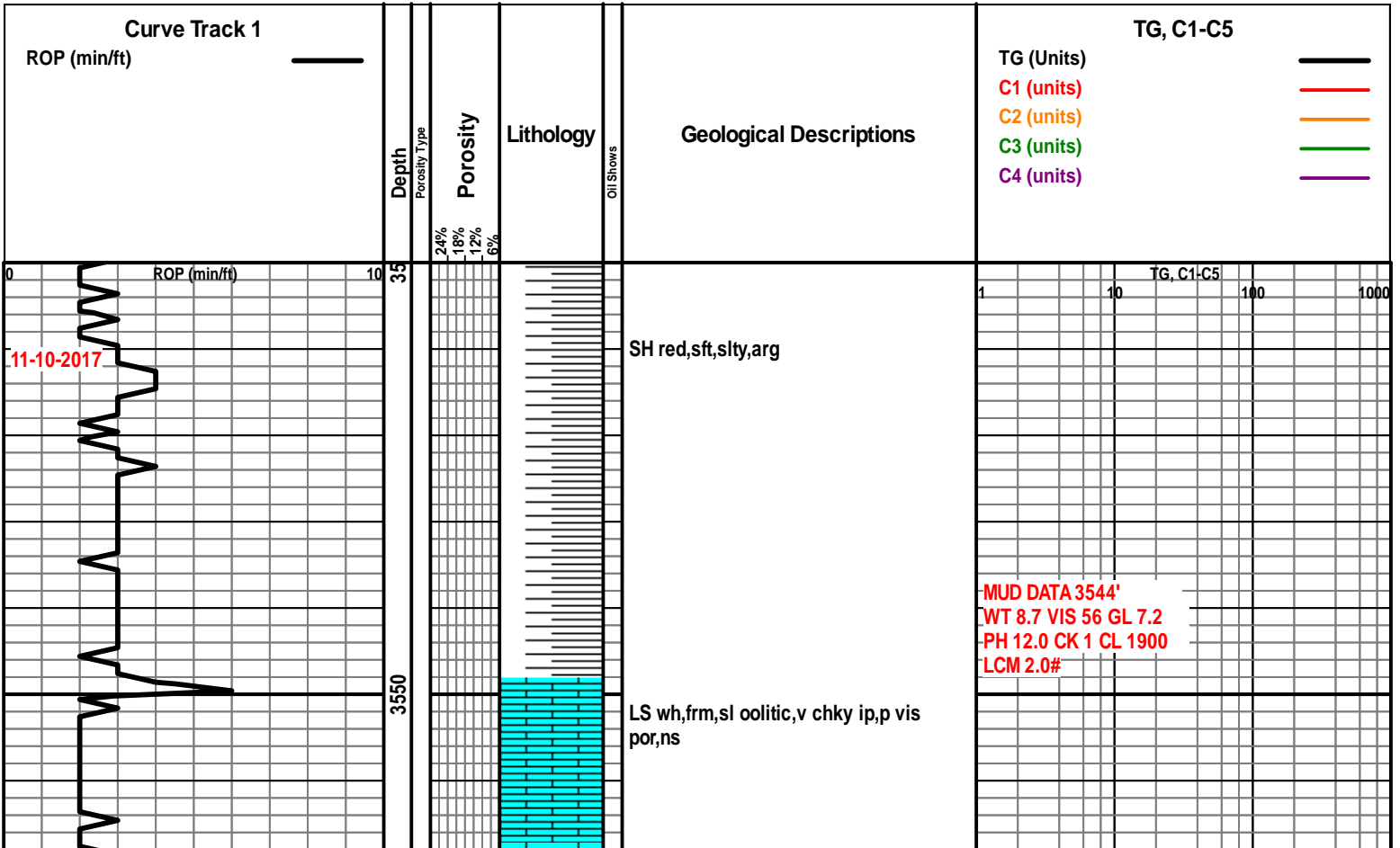
- Even
- Spotted
- Ques
- Dead

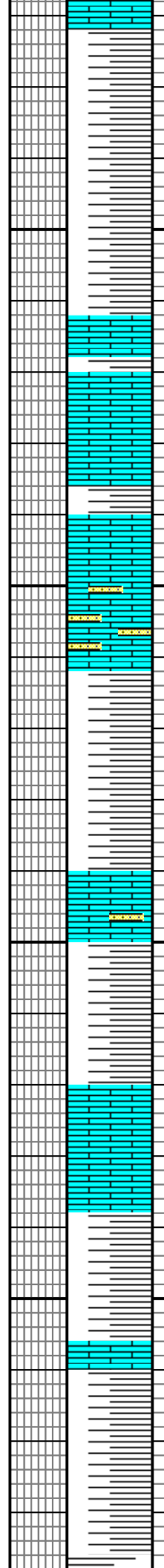
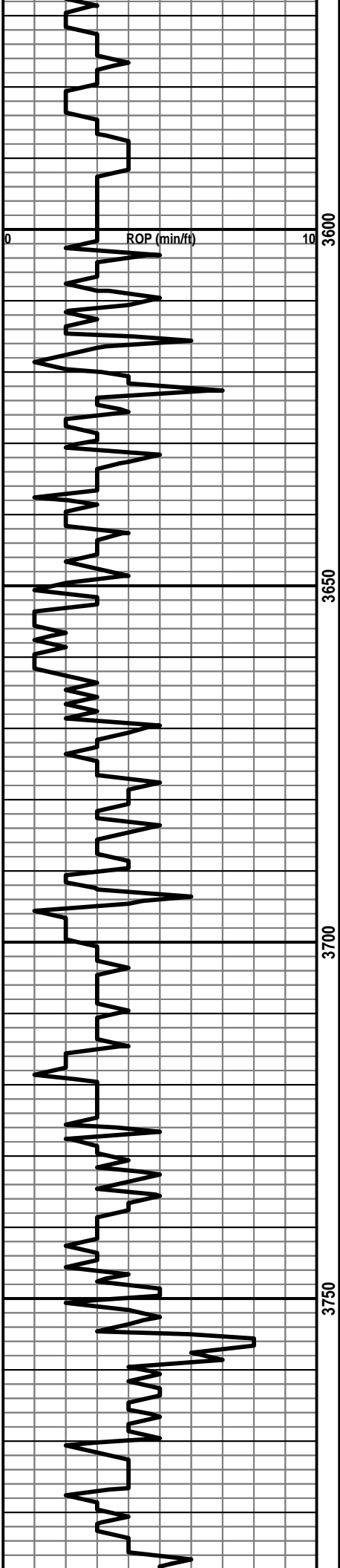
#### INTERVAL

- Dst
- Dst

#### EVENT

- Rft
- Sidewall





SH aa bcmg v arg,gummy ip

LS wh-crm,frm-sl hdsi foss,chky ip,with thin strings SH aa

LS crm,frm,sl hd,bcmg very sdy,arg,p por,ns

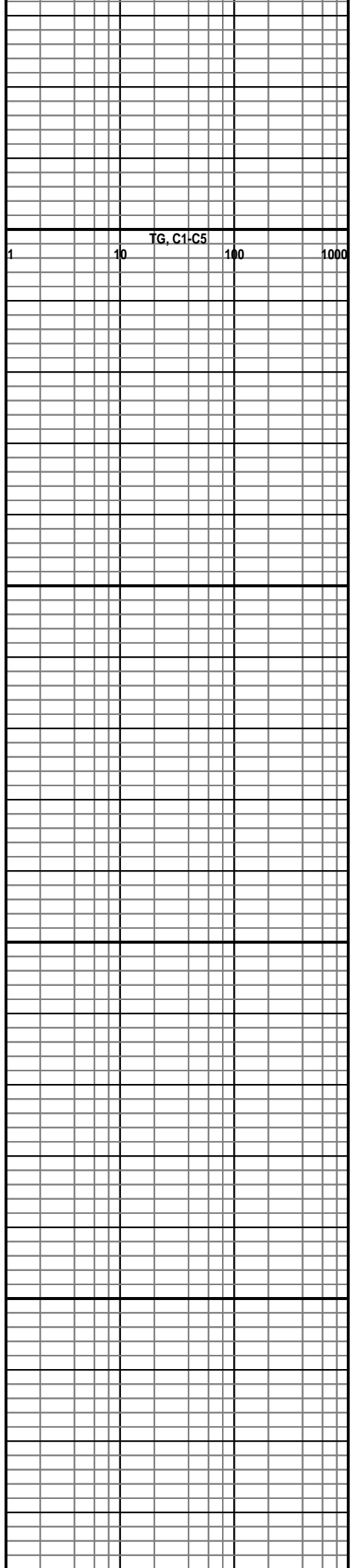
SH red,v sft,v arg

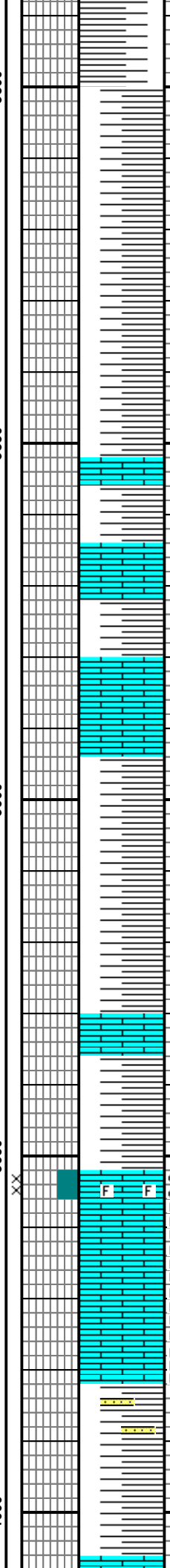
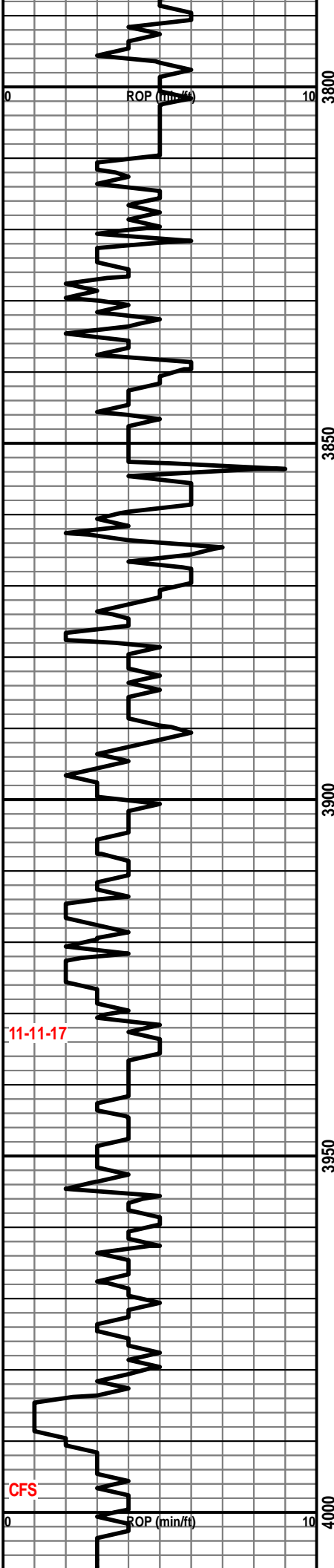
LS aa sdy

SH red,v sft,v arg,gummy

LS crm-pale gy,frm,sbchky,p vis por,ns

SH aa with thin LS pale gy,frm,dns,ns





SH gy,gy gn,frm,sbwxy

SH red,v sft,v arg,gummy with thin LS pale gy,hd,blky,dns,arg,ns

LS pale gy-frm,v hd,dns,blky,sl foss,crptoxln

LS aa

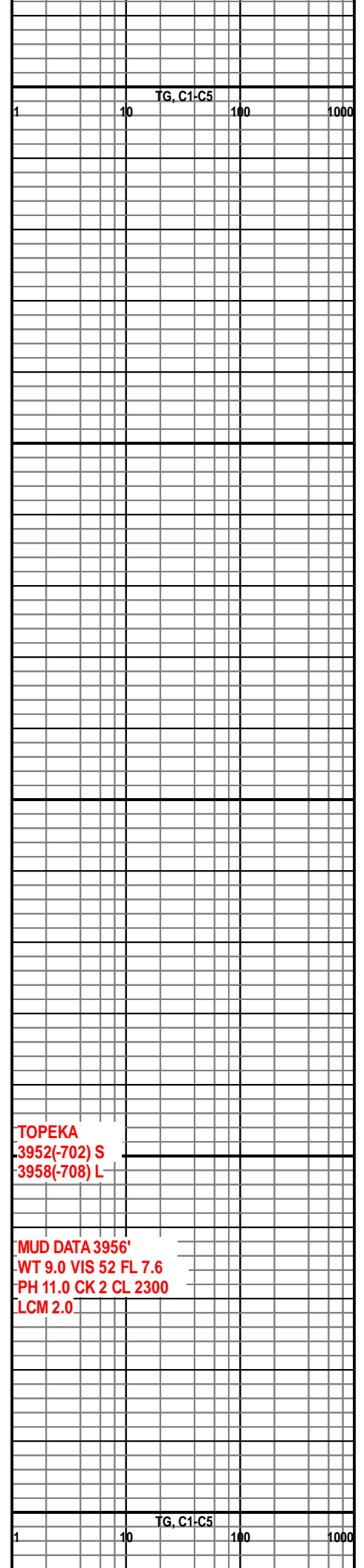
SH red,gn,sft,v arg

LS pale crm-pale gy,hd,blky,dns,dirty,arg,p por,ns with thin SH aa

LS wh,frm,sbchky-chky,sl foss,p intg por,v spty blk asph stn,g cut,no free oil

LS wh,frm,chky,p vis por,v spty blk dd stn

SH red,v sft,v arg,some v sdy ip

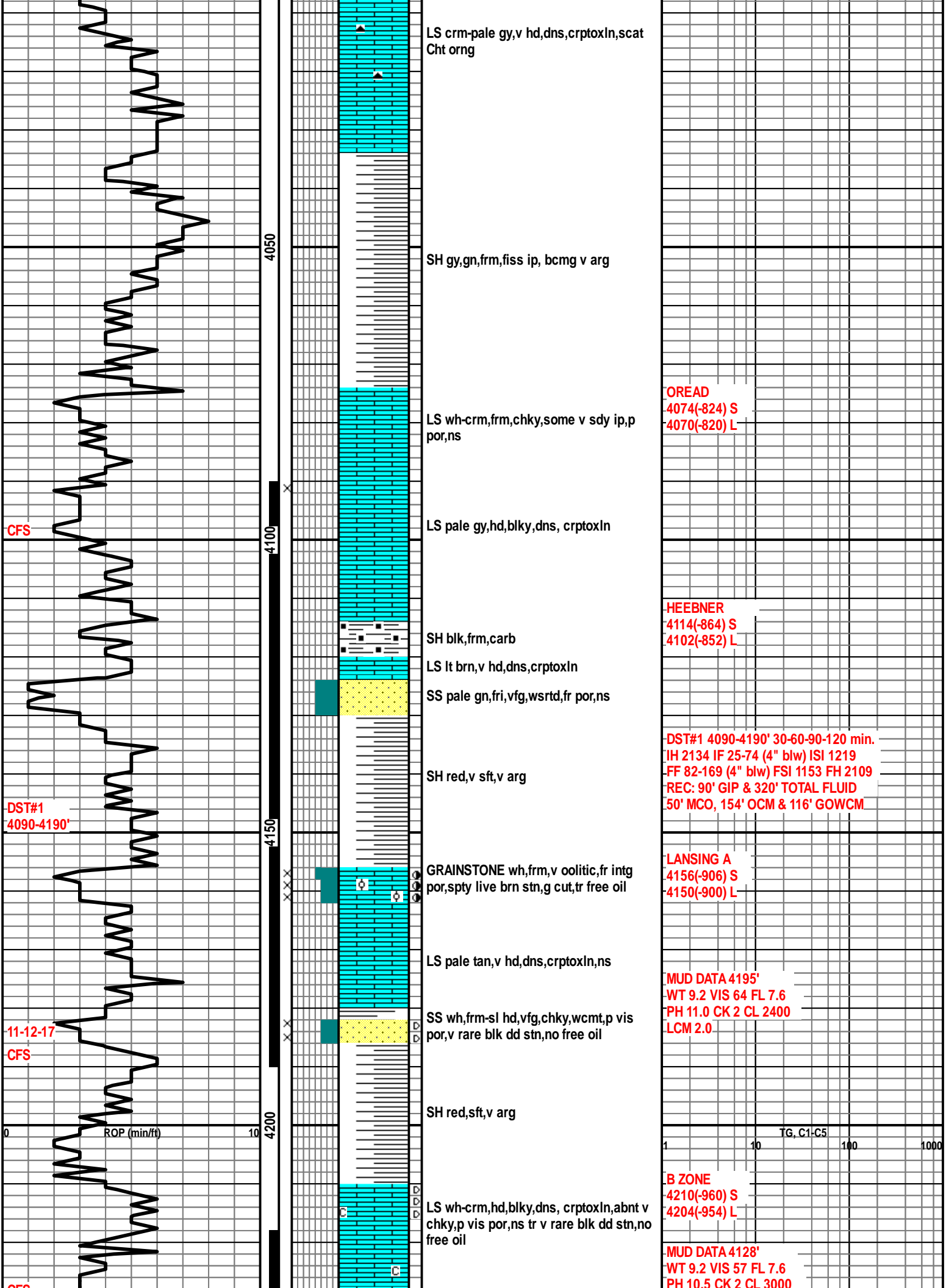


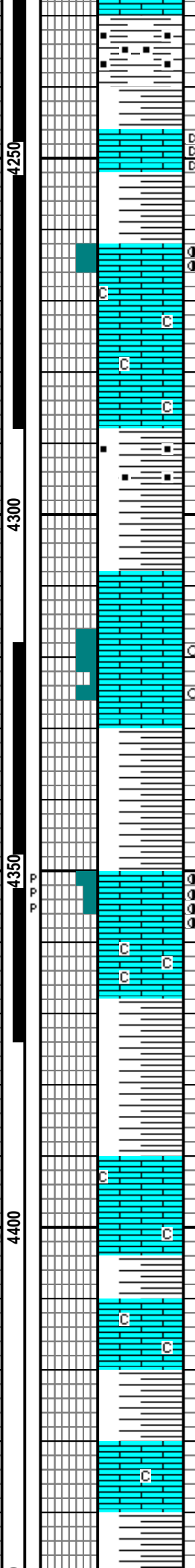
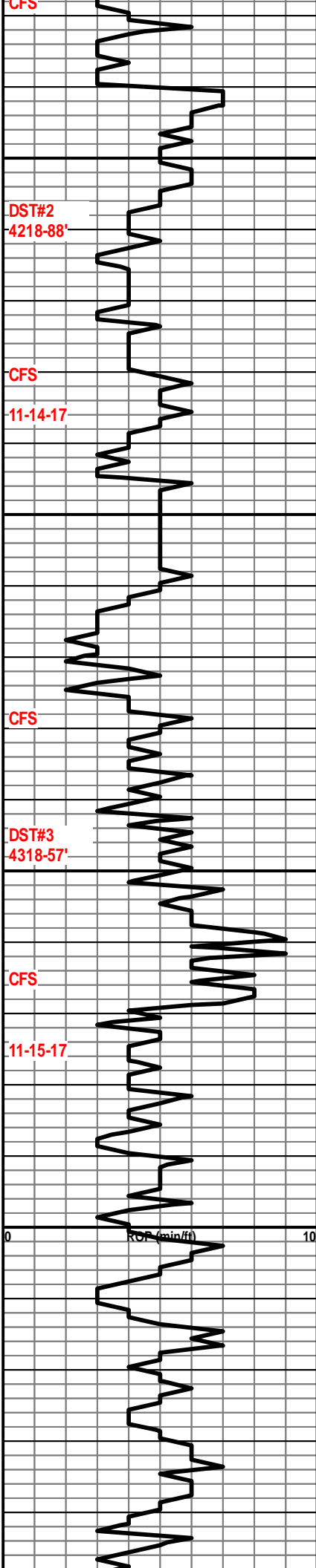
11-11-17

CFS

TOPEKA  
3952(-702) S  
3958(-708) L

MUD DATA 3956'  
WT 9.0 VIS 52 FL 7.6  
PH 11.0 CK 2 CL 2300  
LCM 2.0





SH blk,frm,fiss ip,v carb

SH red,sft,v arg

LS crm,v hd,dns,blky, some v rare blk asph stn

SH aa

GRAINSTONE wh,frm,oolitic, p intg por,spty-even blk stn,g cut,p show free oil

LS wh-crm,hd,blky,dns,ns v abnt chky,p vis por,ns

SH gn, blk carb

SH red,gn,v sft,v arg

LS crm,hd,crptoxln,p por,ns

LS wh-crm,frm,microIn, foss ip,sbchky,p intxln por,v rare spty pp stn,p cut

SH red,gn,sft,v arg

LS crm,sl hd,blky,v fnly microIn,p pp vuggy por with spty live brn stn,g cut,no free oil

LS wh,v chky,p vis por,ns

SH gy gn,v sft,v arg

SH red brn,frm,chnky

LS crm,hd,dns,crptoxln,p por,ns, abnt chky

SH red brn,sft,v arg

LS wh,frm,chky,p vis por,ns

SH aa gn,red brn,sft,v arg

LS aa,ns

LCM 2.0

**C ZONE**  
4262(-1012) S  
4258(-1008) L

DST#2 4218-88' 30-60-30-60 min.  
IH 2172 IF 29-293 (BOB 11 m)  
ISI 1121 FF 296-384 (BOB 16 m)  
FSI 1058 FH 2133  
REC: 805' TOTAL FLUID  
100' COCM, 60' SOWCM, 250' MCW OIL  
SPOTS & 395' MCW TR OIL

MUD DATA 4289'  
WR 9.2 VIS 61 FL 7.6  
PH 10.5 CK 2 CL 3300  
LCM 2.0

**D ZONE**  
4308(-1058) S  
4304(-1054) L

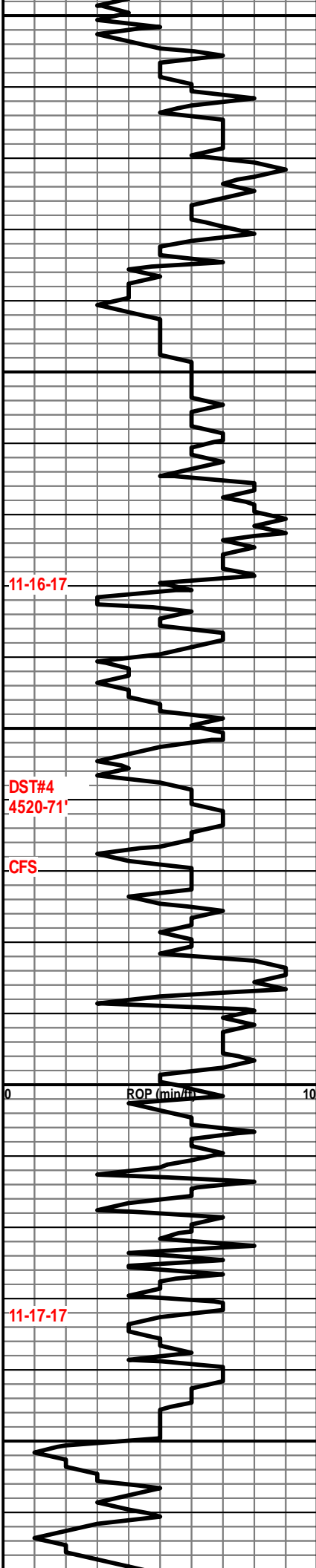
DST#3 4318-4375 30-60-60-90 min.  
IH 2185 IF 16-18 (1/4 BLW) ISI 400  
FF 18-20 FSI 403 FH 2165  
REC: 10' MUD/ TRACE OIL

**E ZONE**  
3450(-1100) S  
4348(-1098) L

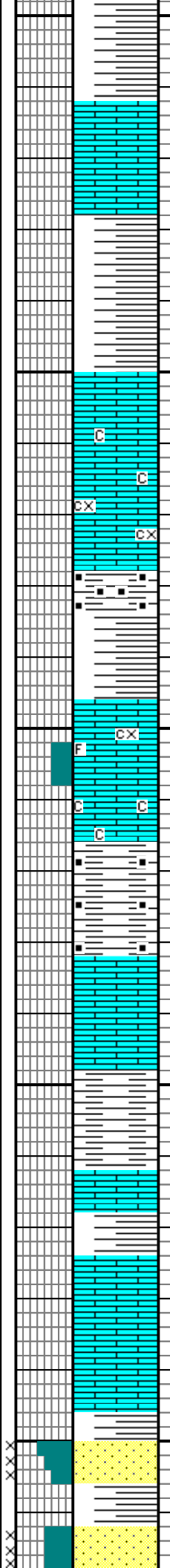
MUD DATA 4375'  
WT 9.2 VIS 59 FL 7.6  
PH 10.5 CK 2 CL 3000  
LCM 2.0

**F ZONE**  
4390(-1140) S  
4382(-1132) L

TG, C1-C5



4450  
4500  
4550  
4600  
4650



SH & LS aa dirty, v arg, ns

LS crm, pale gy, hd, blk, crptoxIn, ns abnt chky

SH blk, frm, fiss, carb

SH aa gn, red brn

LS gy brn, hd, blk, crptoxIn, foss ip, abnt chky

LS crm, hd, blk, dns, abnt chky, ns

SH blk, gn frm, fiss, carb

4582-98 LS crm, v hd, dns, crptoxIn

SH gn, blk, frm, fiss, carb

LS crm, tan, v hd, dns, crptoxIn, ns with thin SH gn, red, arg

SS pale gn, fri, vfg, rnd, wsrted glau, fr intg por, ns

SH red, sft, v arg

SS trnsI, fri, f-m gr, sbrnd, msrted, fr-gd intg por, ns, abnt v lg grs in tray

PAWNEE  
4504(-1258) S  
4498(-1252) L

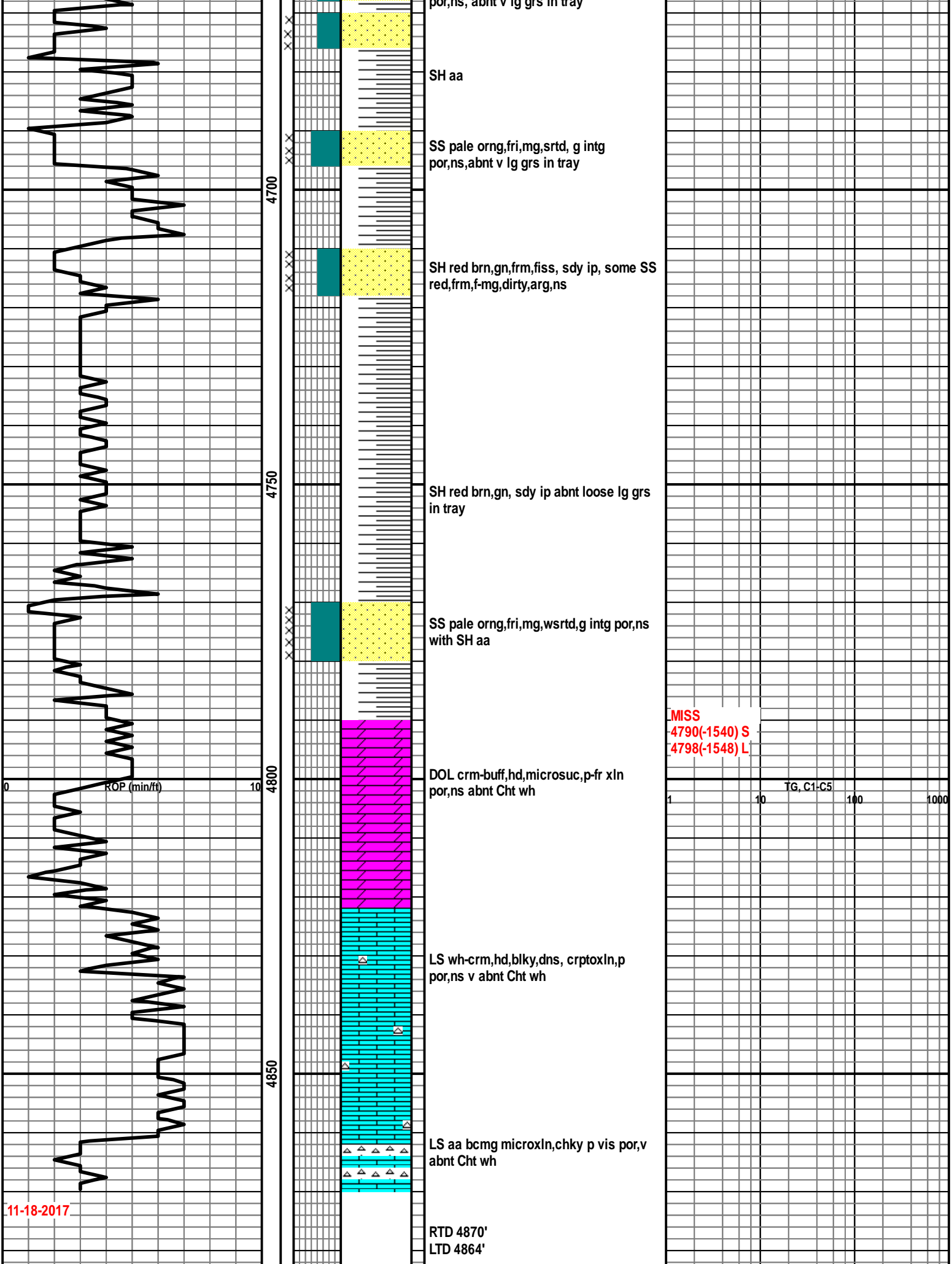
FT SCOTT  
4546(-1296) S  
4538(-1288) L

DST#4 4520-71' 30-60-60-90 min.  
IH 2357 IF 14-22 ISI 1204 FF 25-31  
FSI 1151 FH 2294  
REC: 45' DRILLING MUD

MUD DATA 4571'  
WT 9.1 VIS 63 FL 8.0  
PH 10.0 CK 2 CL 2900  
LCM 1.5

TG, C1-C5

MUD DATA 4614'  
WT 9.4 VIS 50 FL 8.4  
PH 10.0 CK 2 CL 3600  
LCM 1.0



11-18-2017

MISS  
4790(-1540) S  
4798(-1548) L

TG, C1-C5



