

Chris Peters

PETROLEUM GEOLOGIST
 Wichita, Kansas

GEOLOGISTS' REPORT

DRILLING TIME AND SAMPLE LOG

OPERATOR Hartman Oil Co.
 LEASE J7 Land #11-1
 LOCATION 2427' FINL & 1717' FEL
 SEC. 1 TWPSP 21S RANG 36W
 COUNTY Wichita STATE Kansas
 FIELD Kuhman
 API 15-093-21961

ELEVATIONS
 KB 3221
 GL 3213
 MEASUREMENTS FROM K.B.
 CASING RECORD
 Conductor
 Surface 8.51/8' @ 342'
 Production

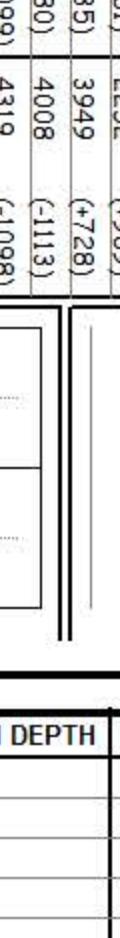
CONTRACTOR W.W. RIG NO. Rig #
 DRILLING COMMENCED 11/1/2017 COMPLETED 11/6/2017
 MUD UP 3400 MUD TYPE Chemical
 DRILLING TIME KEPT FROM 3800 TO RTD
 SAMPLES SAVED FROM 3900 TO RTD
 SAMPLES EXAMINED FROM 3900 TO RTD
 GEOLOGICAL SUPERVISION FROM 4200 TO RTD

ELECTRICAL SURVEYS:
 Halliburton
 Neutron/Density
 Resistivity

FORMATION NAME

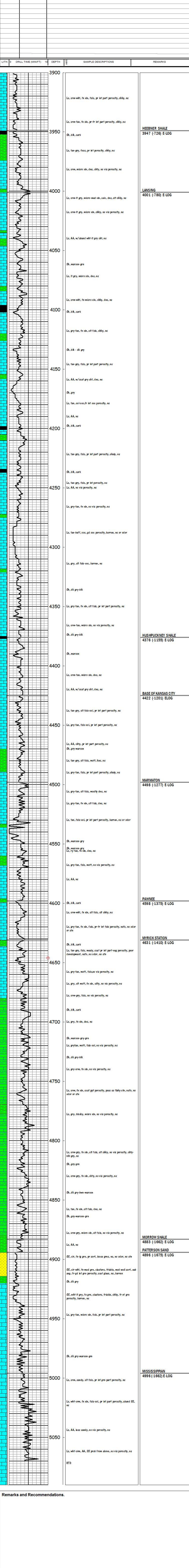
FORMATION NAME	TOP DATUM	LOG DATUM	SAMPLE TOP	SAMPLE DATUM
Anthracite Base	2260	(-961)	2252	(-969)
Heebner	3956	(-735)	3949	(-728)
Lansing	4001	(-780)	4008	(-1113)
Stork Shale	4320	(-1099)	4319	(-1098)
BKC	4422	(-1201)	4430	(-1202)
Alcortan	4500	(-1279)	4498	(-1277)
Upr. Pawnee	4599	(-1378)	4598	(-1377)
Fort Scott	absent	n/a	n/a	n/a
Mississippian	4996	(-1775)	4991	(-1770)
	5070	(-1849)	5070	(-1849)

Micro log



DATE	7:00 AM DEPTH	REMARKS
Date 1		

LITH.	DRILL TIME (MIN/FT)	DEPTH	SAMPLE DESCRIPTIONS	REMARKS
0	10	3900		



Remarks and Recommendations.