



# Fall & Associates

Stake and Elevation Service

P.O. Box 222

Pretty Prairie, KS. 67570

785-243-7506

Date 3-7-18

Invoice Number 0306181

MURFIN DRILLING

2-20

Culwell 'G'

Operator

Number

Farm Name

Cheyenne-KS

20

2s

37w

1700'FNL 1220'FWL

County-State

S

T

R

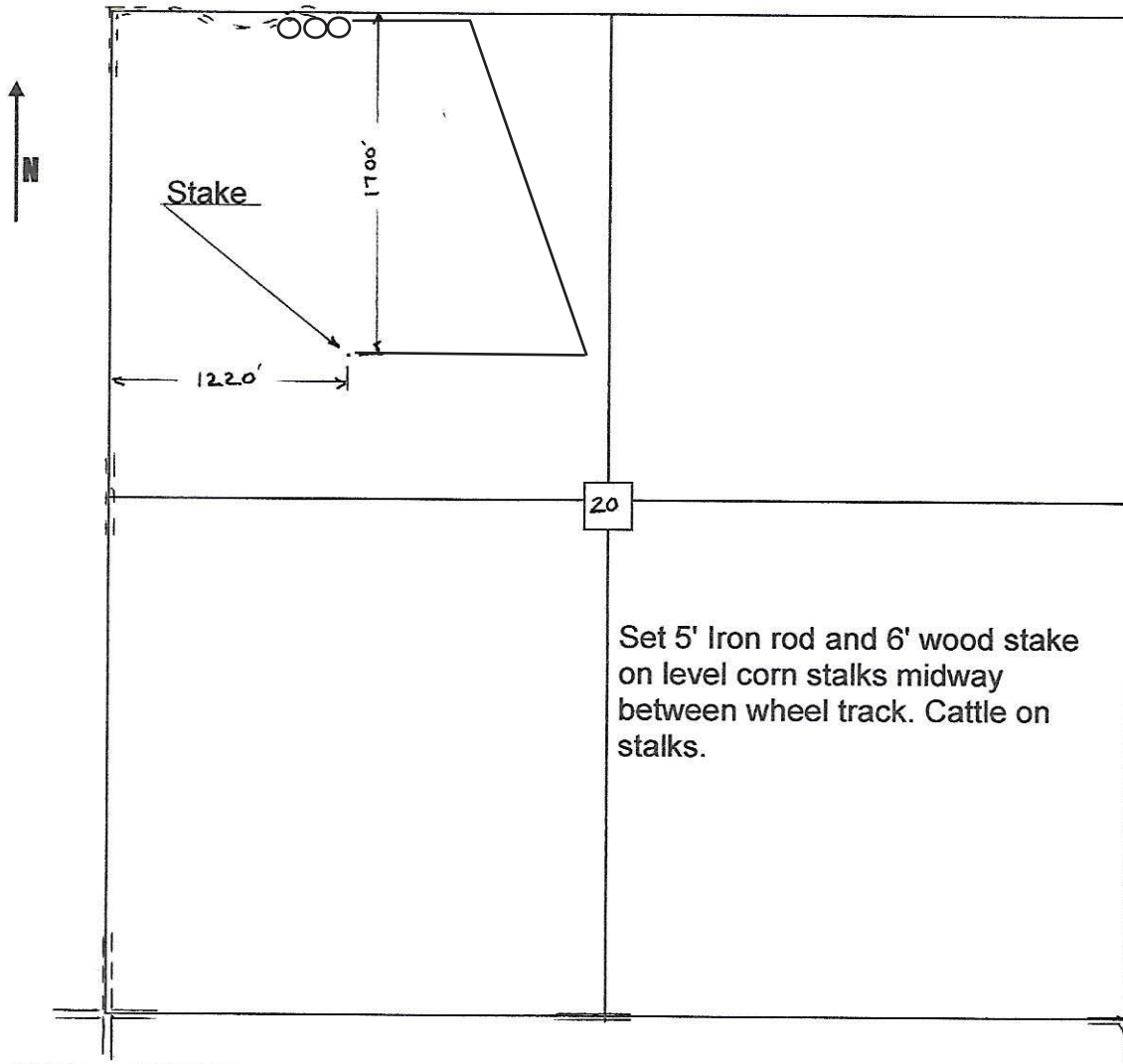
Location

Murfin Drilling  
250 N. Water  
Suite 300  
Wichita, KS. 67202

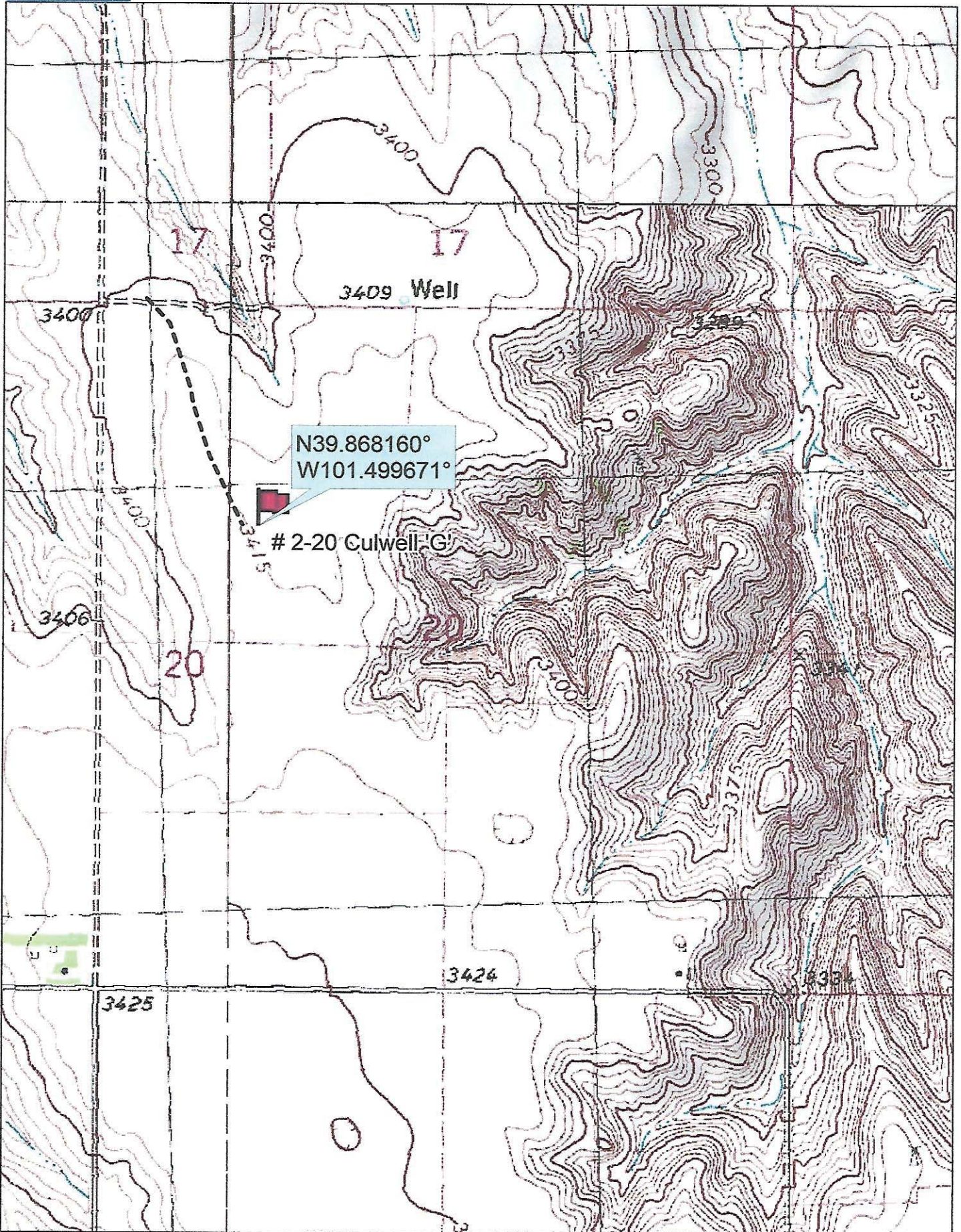
Elevation 3414 Gr.

Ordered By: Shauna

Scale 1"=1000'



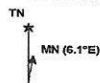




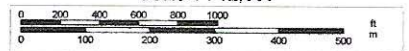
Data use subject to license.

© DeLorme. Topo North America™ 9.

www.delorme.com



Scale 1 : 12,000



1" = 1,000.0 ft Data Zoom 13-1