

Fall & Associates
 Stake and Elevation Service
 P.O. Box 222
 Pretty Prairie, KS. 67570
 785-243-7506

Date 4-24-18

Invoice Number 0418181

BRITO OIL COMPANY

1-6

Riggs

Operator

Number

Farm Name

Gove-KS

6 13s 26w

950'FNL 1080'FWL

County-State

S T R

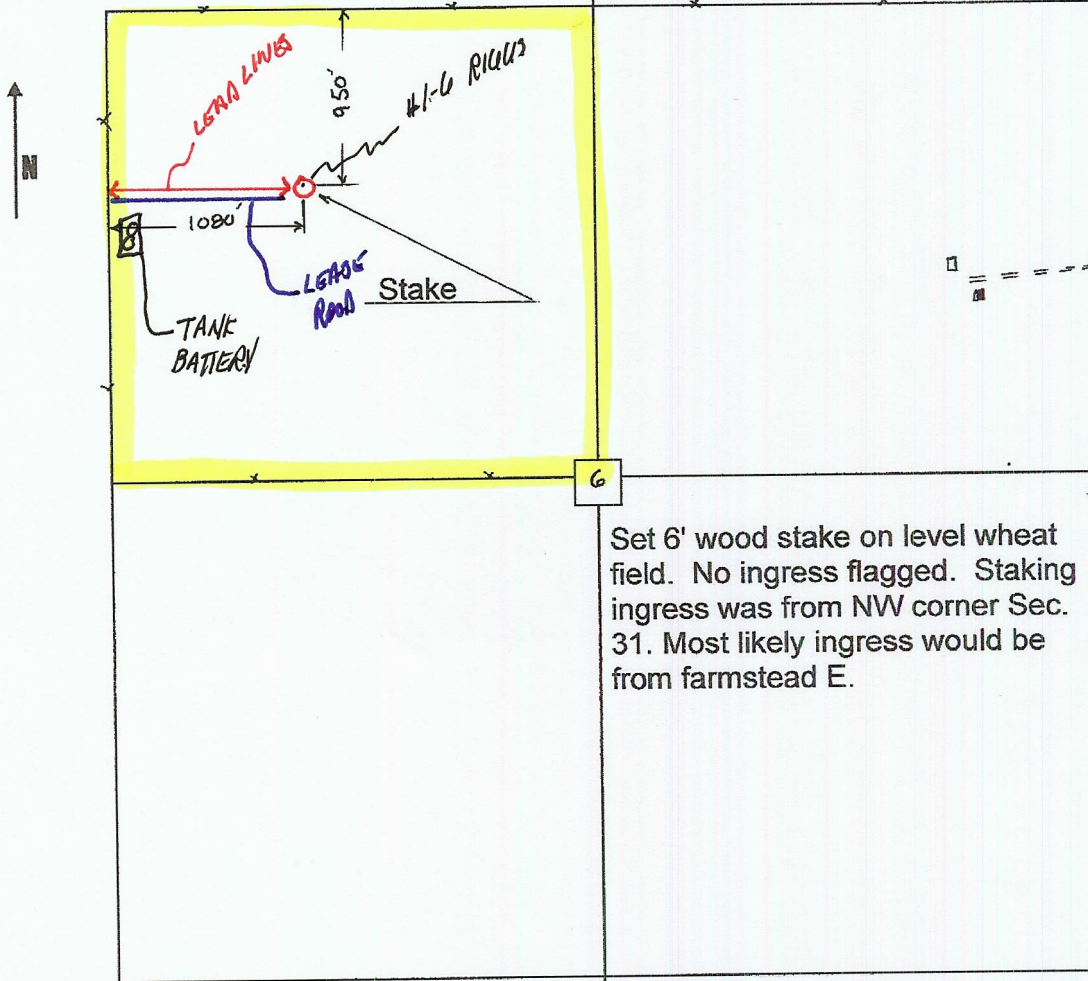
Location

Brito Oil Company, Inc.
 1223N Rock Rd.
 Bldg I Suite 100
 Wichita, KS. 67206

Elevation 2635 Gr.

Ordered By: Raul

Scale 1"=1000'



Set 6' wood stake on level wheat field. No ingress flagged. Staking ingress was from NW corner Sec. 31. Most likely ingress would be from farmstead E.