



**TRILOBITE
TESTING, INC.**

DRILL STEM TEST REPORT

Shakespeare Oil Co., Inc.

36/16/34 Scott, KS

202 W Main St.
Salem, IL 62881

Janzen 7-36

Job Ticket: 61642

DST#: 1

ATTN: Tim Priest

Test Start: 2017.12.18 @ 13:53:00

GENERAL INFORMATION:

Formation: **Marmaton A&B**

Deviated: No Whipstock: 3114.00 ft (KB)

Time Tool Opened: 16:14:45

Time Test Ended: 21:43:30

Test Type: Conventional Bottom Hole (Initial)

Tester: Chris Hagman

Unit No: 70

Interval: **4420.00 ft (KB) To 4500.00 ft (KB) (TVD)**

Reference Elevations: 3114.00 ft (KB)

Total Depth: 4500.00 ft (KB) (TVD)

3106.00 ft (CF)

Hole Diameter: 7.88 inches Hole Condition: Good

KB to GR/CF: 8.00 ft

Serial #: 8968

Inside

Press@RunDepth: 14.40 psig @ 4422.00 ft (KB)

Capacity: 8000.00 psig

Start Date: 2017.12.18

End Date:

2017.12.18

Last Calib.: 1899.12.30

Start Time: 13:53:05

End Time:

21:43:29

Time On Btm: 2017.12.18 @ 16:14:15

Time Off Btm: 2017.12.18 @ 19:47:15

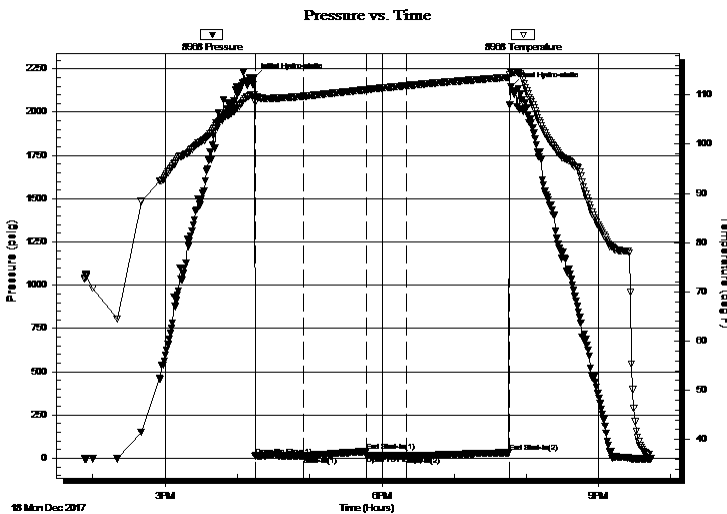
TEST COMMENT: IF: Weak surface blow, died 5 min.

IS: No blow back

FF: No blow

FS: No blow back

PRESSURE SUMMARY



Time (Min.)	Pressure (psig)	Temp (deg F)	Annotation
0	2198.68	110.00	Initial Hydro-static
1	11.72	108.51	Open To Flow (1)
41	14.32	109.71	Shut-In(1)
93	38.14	111.05	End Shut-In(1)
94	15.19	111.05	Open To Flow (2)
127	14.40	111.87	Shut-In(2)
212	31.69	113.56	End Shut-In(2)
213	2148.66	114.43	Final Hydro-static

Recovery

Length (ft)	Description	Volume (bbl)
5.00	100%M	0.07

Gas Rates

Choke (inches)	Pressure (psig)	Gas Rate (Mcf/d)

Serial #: 8968

Inside

Shakespeare Oil Co., Inc.

Janzen 7-36

DST Test Number: 1

