

Fall & Associates
 Stake and Elevation Service
 P.O. Box 222
 Pretty Prairie, KS. 67570
 785-243-7506

Date 4-24-18

Invoice Number 0420181

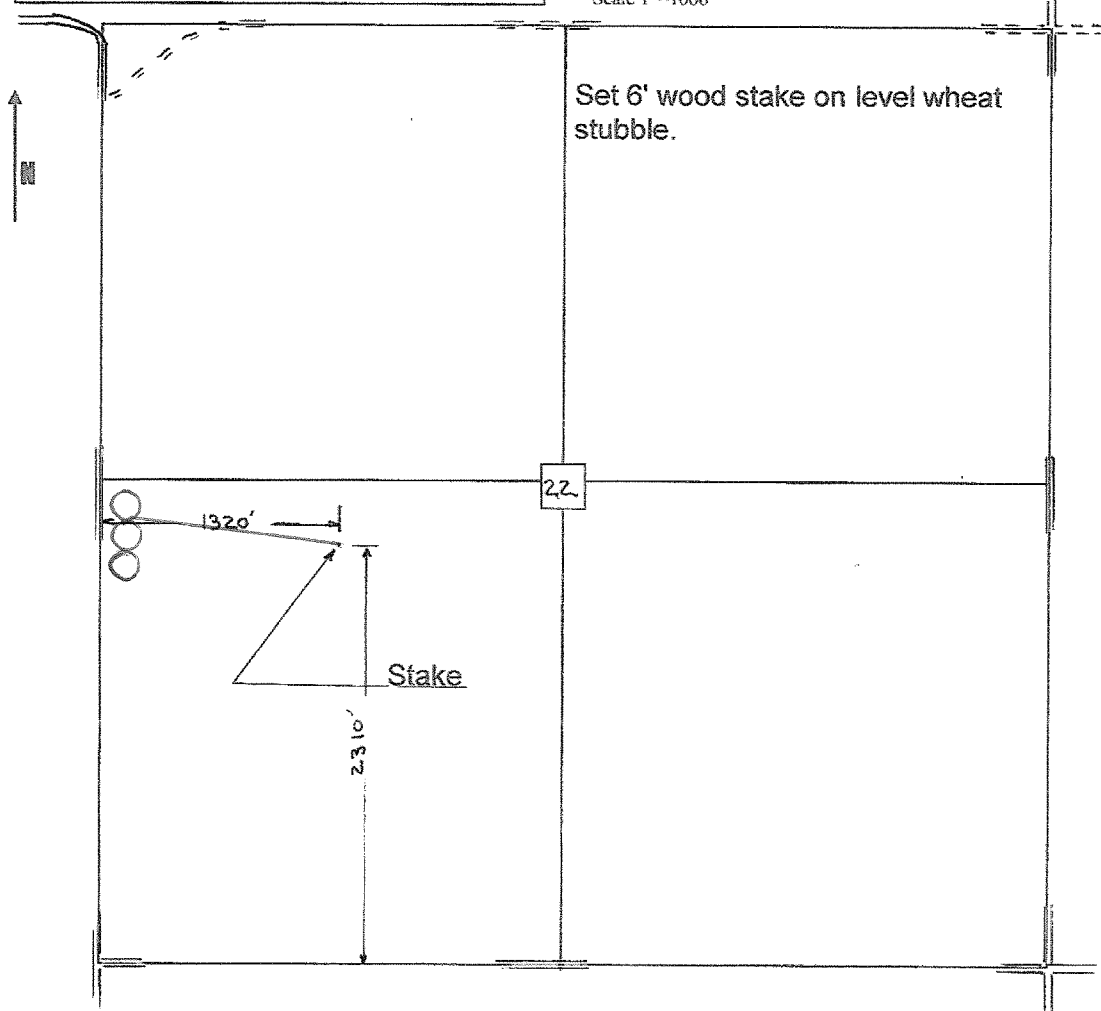
MURFIN DRILLING	2-22			Banister 'A'
Operator	Number			Farm Name
Cheyenne-KS	22	2s	37w	2310'FSL 1320'FWL
County-State	S	T	R	Location

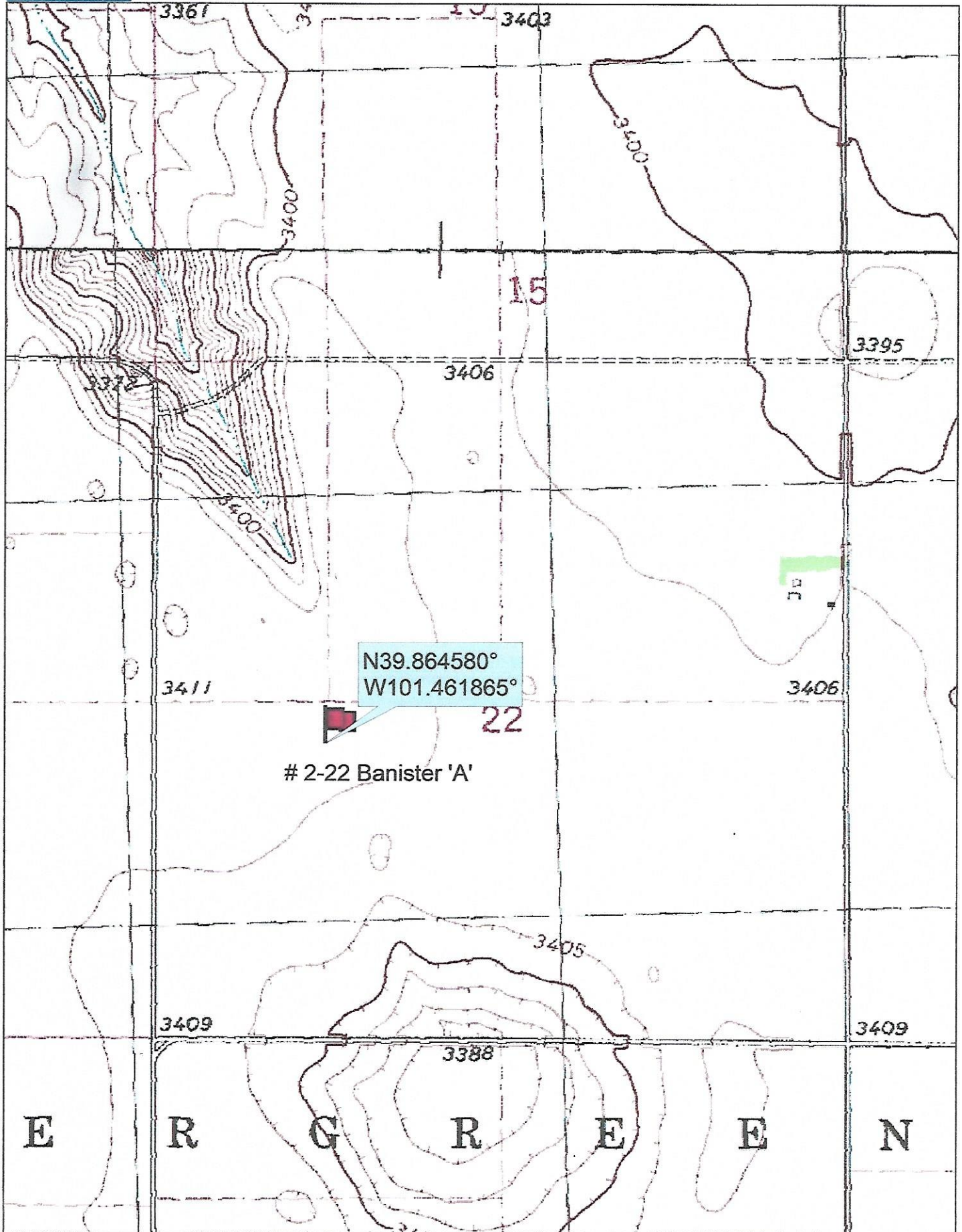
Murfin Drilling
 250 N Water
 Suite 300
 Wichita, KS. 67202

Elevation 3409 Gr.

Ordered By: Shauna

Scale 1"=1000'





Data use subject to license.

© DeLorme. Topo North America™ 9.

www.delorme.com

