

Operator <b>Downing-Nelson Oil Co., Inc.</b>		Elevation KB 2055 DF 2053 GL 2047	
Lease <b>Red</b>		No. <b>1-36</b>	
API # <b>15-195-23040-0000</b>		Casing Record Surface <b>8 5/8" @ 1232'</b> Production <b>None</b>	
Field <b>Groff</b>		Electrical Surveys <b>CNDL, DIL</b> <b>MEL</b>	
Location <b>800' FSL &amp; 2161' FWL</b>			
Sec. <b>36</b>	Twp. <b>14s</b>	Rgc. <b>21w</b>	
County <b>Trego</b>		State <b>Kansas</b>	
Formation	Sample tops	Log Tops	Datum
Top Anhydrite	1357	1353	+702
Base Anhydrite	1400	1395	+660
Topeka	3097	3096	-1041
Heebner	3350	3350	-1295
Toronto	3371	3371	-1316
LKC	3390	3389	-1334
BKC	3639	3640	-1585
Marmaton	3722	3722	-1667
Cherokee Sh	3668	3767	-1712
Cherokee Sand	3786	3786	-1731
Arbuckle	3807	3807	-1752
Total Depth	3866	3866	-1811

Drilling Contractor <b>Discovery Drilling, Rig #4</b>		Completed <b>4-8-18</b>	
Commenced <b>3-30-18</b>		To <b>RTD</b>	
Samples Saved From <b>3100</b>		To <b>RTD</b>	
Drilling Time Kept From <b>3000</b>		To <b>RTD</b>	
Samples Examined From <b>3100</b>		To <b>RTD</b>	
Geological Supervision From <b>3100</b>		To <b>RTD</b>	

**Summary and Recommendations**

After drilling had commenced, and a depth of ~3750' had been reached, it was noticed that the location being drilled was not consistent with that of the staked location (658' FSL & 1808' FWL). Pro-Stake LLC was contacted and drove to location. It was found that the actual location being drilled was 800' FSL & 2161' FWL. After this, the original staked location was found. The original hole from the stake was found as well as paint on the grass and ground, indicating that someone had deliberately moved the stake. It was decided to finish drilling the well to the Arbuckle and look for shows along the way. Due to structural position, DST recovery, and log evaluation, it was decided to plug and abandon the well.

After drilling was completed, DNOCI's insurance was contacted and a police report was filed. DNOCI is awaiting further correspondence.

Respectfully Submitted,  
 Marc A. Downing

**ROCK TYPES**

altale, red  
 Sh  
 altale, gry  
 Carbon Sh

**ACCESSORIES**

altale, gry  
 Carbon Sh

**MINERAL**

Chert/White

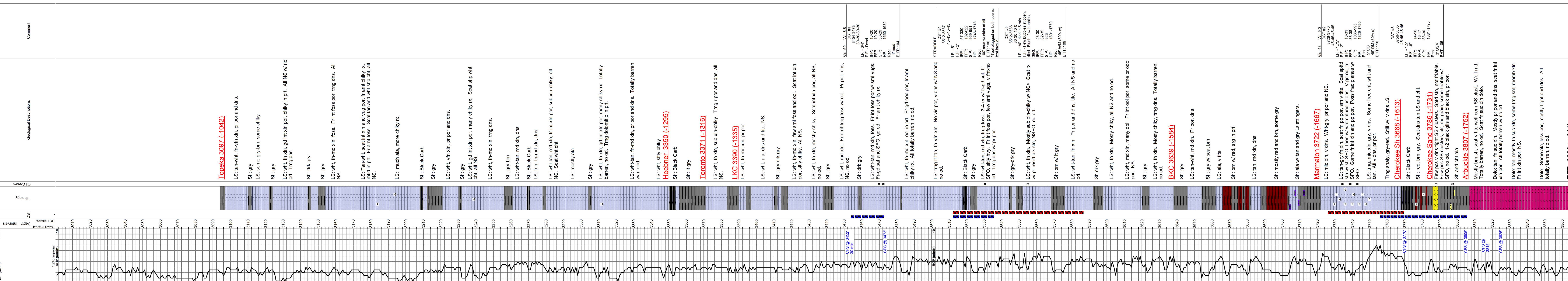
**OTHER SYMBOLS**

**OIL SHOWS**

- Even Shn 50-75 %
- Spotted Shn 25-50 %
- Spotted Shn 1-25 %
- Questionable Shn
- Dead Oil Shn
- Fluorescence

**DST**

- DST Int
- DST alt
- Core
- tail pipe



Printed by GEOSTrip Vc Striplog version 4.0.8.18 (www.grsrl.ca)

Curve Track #1  
 ROP (min/ft)

ROP (min/ft)

ROP (min/ft)

ROP (min/ft)

ROP (min/ft)

ROP (min/ft)

ROP (min/ft)

ROP (min/ft)

ROP (min/ft)

ROP (min/ft)

ROP (min/ft)

ROP (min/ft)

ROP (min/ft)

ROP (min/ft)

ROP (min/ft)

ROP (min/ft)

ROP (min/ft)

ROP (min/ft)

ROP (min/ft)

ROP (min/ft)

ROP (min/ft)

ROP (min/ft)

ROP (min/ft)

ROP (min/ft)

ROP (min/ft)

ROP (min/ft)

ROP (min/ft)

ROP (min/ft)

ROP (min/ft)

ROP (min/ft)

ROP (min/ft)

ROP (min/ft)

ROP (min/ft)

ROP (min/ft)

ROP (min/ft)

ROP (min/ft)

ROP (min/ft)

ROP (min/ft)

ROP (min/ft)

ROP (min/ft)

ROP (min/ft)

ROP (min/ft)

ROP (min/ft)

ROP (min/ft)

ROP (min/ft)

ROP (min/ft)

ROP (min/ft)

ROP (min/ft)

ROP (min/ft)

ROP (min/ft)

ROP (min/ft)

ROP (min/ft)

ROP (min/ft)

ROP (min/ft)

ROP (min/ft)

ROP (min/ft)

ROP (min/ft)

ROP (min/ft)

ROP (min/ft)

ROP (min/ft)

ROP (min/ft)

ROP (min/ft)

ROP (min/ft)

ROP (min/ft)

ROP (min/ft)

ROP (min/ft)

ROP (min/ft)

ROP (min/ft)

ROP (min/ft)

ROP (min/ft)

ROP (min/ft)

ROP (min/ft)