

KANSAS CORPORATION COMMISSION
OIL & GAS CONSERVATION DIVISION

TEMPORARY ABANDONMENT WELL APPLICATION

OPERATOR: License#
Name:
Address 1:
Address 2:
City: State: Zip:
Contact Person:
Phone:
Contact Person Email:
Field Contact Person:
Field Contact Person Phone:

API No. 15-
Spot Description:
Sec. Twp. S. R.
GPS Location: Lat: Long:
Datum: NAD27 NAD83 WGS84
County: Elevation:
Lease Name: Well #:
Well Type: Oil Gas OG WSW Other:
SWD Permit #: ENHR Permit #:
Gas Storage Permit #:
Spud Date: Date Shut-In:

Table with 7 columns: Conductor, Surface, Production, Intermediate, Liner, Tubing. Rows include Size, Setting Depth, Amount of Cement, Top of Cement, Bottom of Cement.

Casing Fluid Level from Surface: How Determined? Date:
Casing Squeeze(s): to w / sacks of cement, to w / sacks of cement. Date:
Do you have a valid Oil & Gas Lease? Yes No
Depth and Type: Junk in Hole at Tools in Hole at Casing Leaks: Yes No Depth of casing leak(s):
Type Completion: ALT. I ALT. II Depth of: DV Tool: w / sacks of cement Port Collar: w / sack of cement
Packer Type: Size: Inch Set at: Feet
Total Depth: Plug Back Depth: Plug Back Method:

Geological Data:

Table with 4 columns: Formation Name, Formation Top, Formation Base, Completion Information. Rows 1 and 2.

UNDER PENALTY OF PERJURY I HEREBY ATTEST THAT THE INFORMATION CONTAINED HEREIN IS TRUE AND CORRECT TO THE BEST OF MY KNOWLEDGE

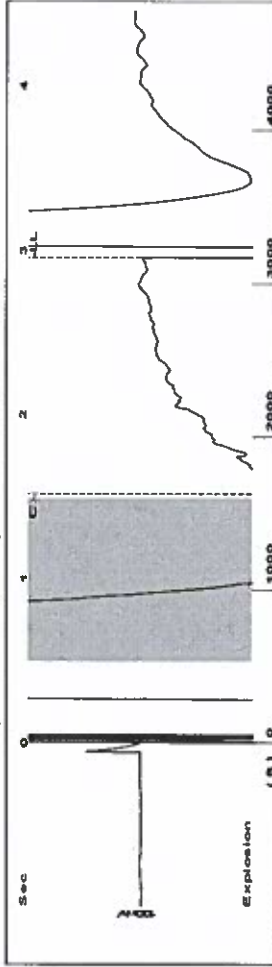
Submitted Electronically

Do NOT Write in This Space - KCC USE ONLY
Date Tested: Results: Date Plugged: Date Repaired: Date Put Back in Service:
Review Completed by: Comments:
TA Approved: Yes Denied Date:

Mail to the Appropriate KCC Conservation Office:

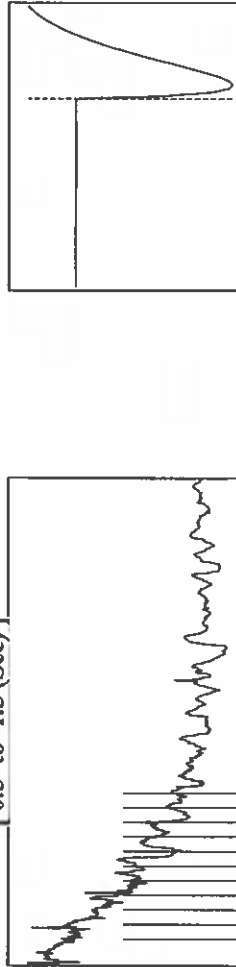
Map of Kansas with 4 numbered districts and corresponding office addresses and phone numbers.

Group: TAD Well: McCoy #1 (acquired on: 04/30/18 09:08:58)



Filter Type High Pass Automatic Collar Count Yes  
 Manual Acoustic Veloc 2113.33 ft/s Manual JTS/sec 33.3333  
 Time 2.956 sec  
 Joints 100.015 Jts  
 Depth 3170.48 ft

0.5 to 1.5 (Sec)

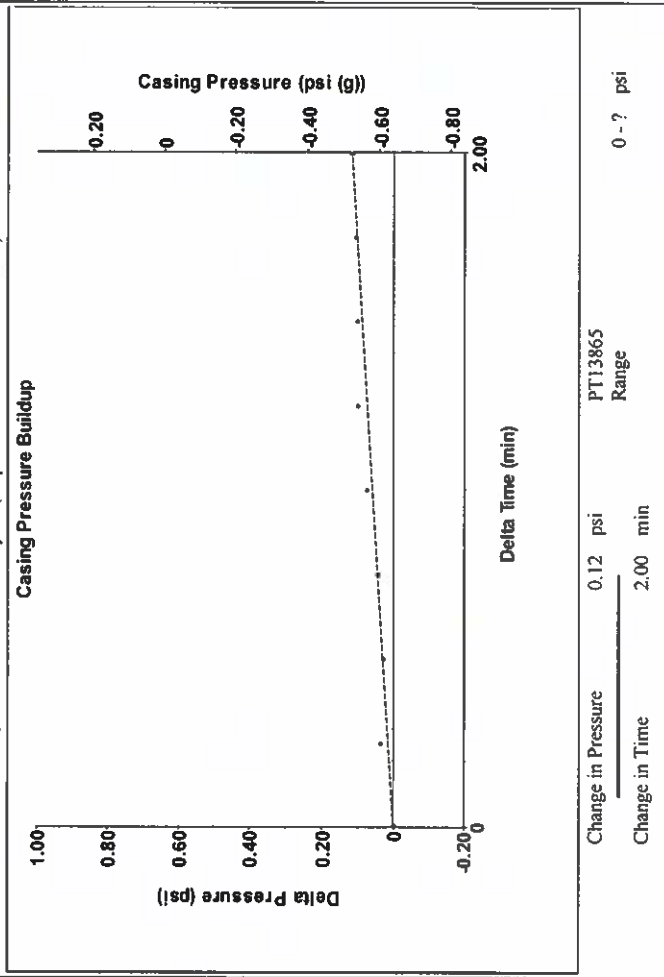


**Analysis Method: Automatic**

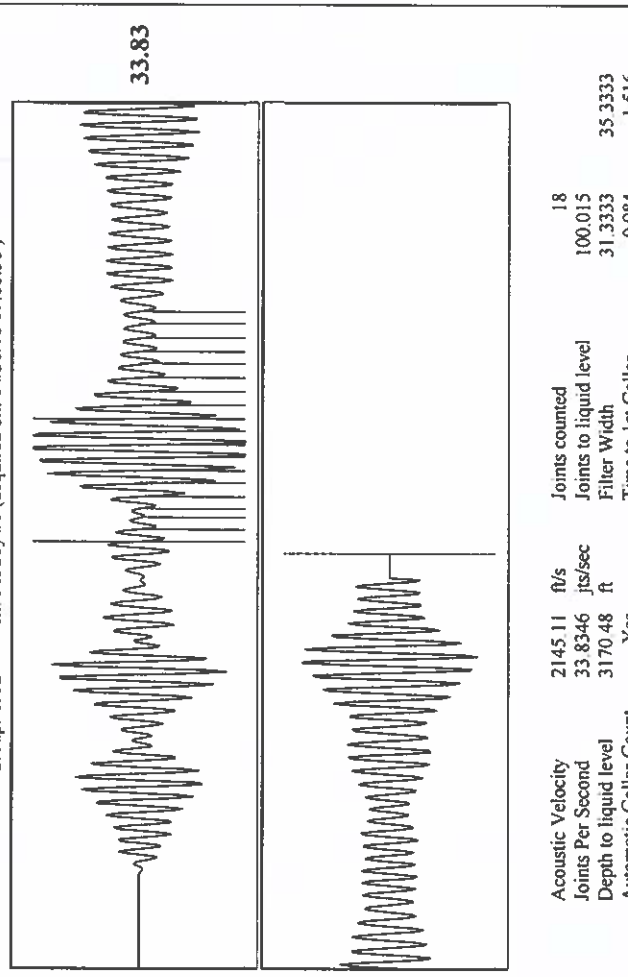
Group: TAD Well: McCoy #1 (acquired on: 04/30/18 09:08:58)

Production	Potential	Casing Pressure	Producing
Oil 40 deg API	-*- BBL/D	-0.6 psi (g)	Annular
Water 1.05 Sp.Gr H2O	-*- BBL/D	Casing Pressure Buildup	Gas Flow -*- Mscf/D
Gas 0.55 Sp.Gr AIR	-*- Mscf/D	0.1 psi	% Liquid 100 %
IPR Method	Vogel	2.00 min	Pump Intake
PBHP/SBHP	-*-	Gas/Liquid Interface Pressure	-*- psi (g)
Production Efficiency	0.0	-*- psi (g)	Producing BHP
		Liquid Level Depth	-*- psi (g)
		3170.48 ft	Static BHP
		Pump Intake Depth	-*- psi (g)
		-*- ft	-*- psi (g)
		Formation Depth	-*- psi (g)
		4200.00 ft	
Acoustic Velocity	2145.11 ft/s		
Formation Submergence			
Total Gaseous Liquid Column HT (TVD)	-*- ft		
Equivalent Gas Free Liquid HT (TVD)	-*- ft		
Acoustic Test			

Group: TAD Well: McCoy #1 (acquired on: 04/30/18 09:08:58)



Group: TAD Well: McCoy #1 (acquired on: 04/30/18 09:08:58)



# STATE OF KANSAS

CORPORATION COMMISSION  
CONSERVATION DIVISION  
DISTRICT No. 1  
210 E. FRONTVIEW, SUITE A  
DODGE CITY, KS 67801



PHONE: 620-682-7933  
<http://kcc.ks.gov/>

GOVERNOR JEFF COLYER, M.D.

SHARI FEIST ALBRECHT, CHAIR | JAY SCOTT EMLER, COMMISSIONER | DWIGHT D. KEEN, COMMISSIONER

May 01, 2018

Katherine McClurkan  
Merit Energy Company, LLC  
13727 Noel Road, Suite 1200  
Dallas, TX 75240

Re: Temporary Abandonment  
API 15-055-20511-00-00  
McCoy 1  
SW/4 Sec.21-26S-32W  
Finney County, Kansas

Dear Katherine McClurkan:

"Your temporary abandonment (TA) application for the well listed above has been approved. In accordance with K.A.R. 82-3-111 the TA status of this well will expire 05/01/2019.

- \* If you return this well to service or plug it, please notify the District Office.
- \* If you sell this well you are required to file a Transfer of Operator form, T-1.
- \* If the well will remain temporarily abandoned, you must submit a new TA application, CP-111, before 05/01/2019.

You may contact me at the number above if you have questions.

Very truly yours,

Michael Maier"