

KANSAS CORPORATION COMMISSION
OIL & GAS CONSERVATION DIVISION

Form must be Typed
Form must be signed

TEMPORARY ABANDONMENT WELL APPLICATION

All blanks must be complete

OPERATOR: License#
Name:
Address 1:
Address 2:
City: State: Zip:
Contact Person:
Phone:
Contact Person Email:
Field Contact Person:
Field Contact Person Phone:

API No. 15-
Spot Description:
Sec. Twp. S. R.
feet from N / S Line of Section
feet from E / W Line of Section
GPS Location: Lat: , Long:
Datum: NAD27 NAD83 WGS84
County: Elevation: GL KB
Lease Name: Well #:
Well Type: Oil Gas OG WSW Other:
SWD Permit #: ENHR Permit #:
Gas Storage Permit #:
Spud Date: Date Shut-In:

Table with 7 columns: Conductor, Surface, Production, Intermediate, Liner, Tubing. Rows include Size, Setting Depth, Amount of Cement, Top of Cement, Bottom of Cement.

Casing Fluid Level from Surface: How Determined? Date:
Casing Squeeze(s): to w / sacks of cement, to w / sacks of cement. Date:
Do you have a valid Oil & Gas Lease? Yes No
Depth and Type: Junk in Hole at Tools in Hole at Casing Leaks: Yes No Depth of casing leak(s):
Type Completion: ALT. I ALT. II Depth of: DV Tool: w / sacks of cement Port Collar: w / sack of cement
Packer Type: Size: Inch Set at: Feet
Total Depth: Plug Back Depth: Plug Back Method:

Geological Date:

Table with 4 columns: Formation Name, Formation Top, Formation Base, Completion Information. Rows 1 and 2.

UNDER PENALTY OF PERJURY I HEREBY ATTEST THAT THE INFORMATION CONTAINED HEREIN IS TRUE AND CORRECT TO THE BEST OF MY KNOWLEDGE

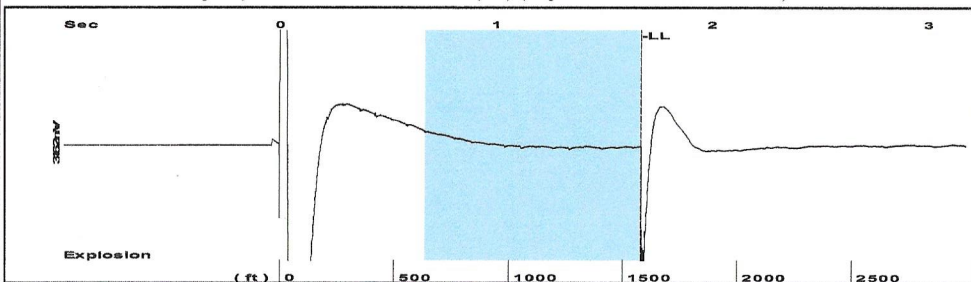
Submitted Electronically

Do NOT Write in This Space - KCC USE ONLY
Date Tested: Results: Date Plugged: Date Repaired: Date Put Back in Service:
Review Completed by: Comments:
TA Approved: Yes Denied Date:

Mail to the Appropriate KCC Conservation Office:

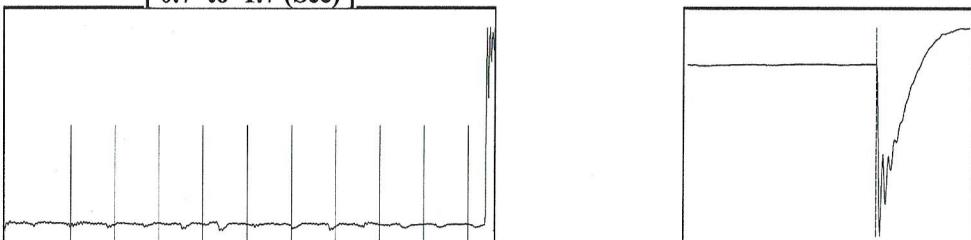
Table with 3 columns: District Office #, Address, Phone. Includes map of Kansas with numbered districts 1-4.

Group: MyWells Well: L Maune #4 (TA) (acquired on: 05/09/18 11:25:09)



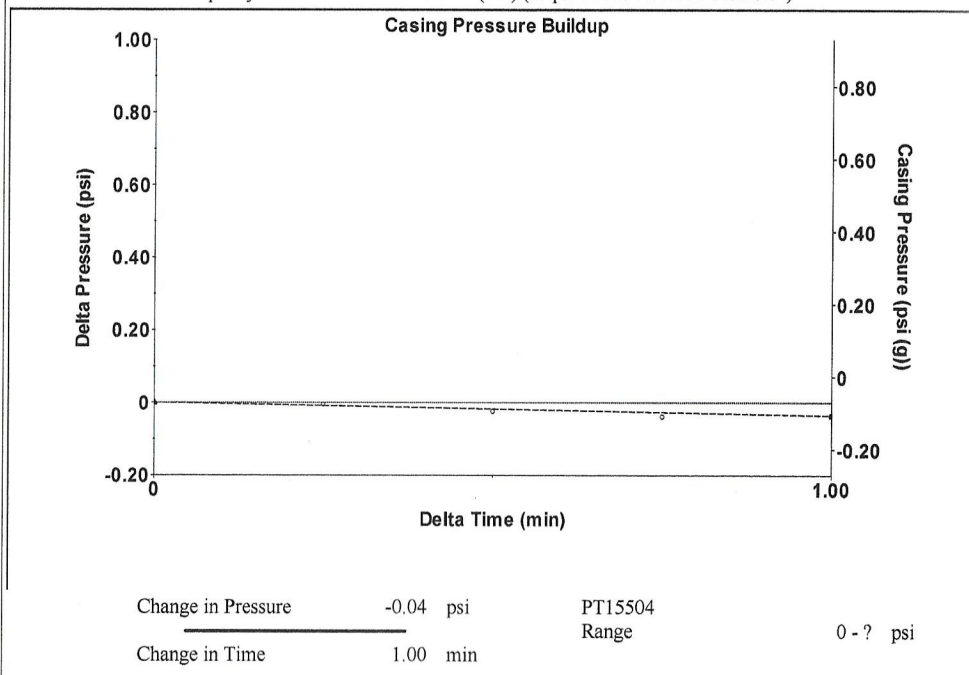
Filter Type High Pass Automatic Collar Count Yes Time 1.674 sec
 Manual Acoustic Veloc 1886.79 ft/s Manual JTS/sec 11.0988 Joints 18.5794 Jts
 Depth 1579.25 ft

[0.7 to 1.7 (Sec)]



Analysis Method: Automatic

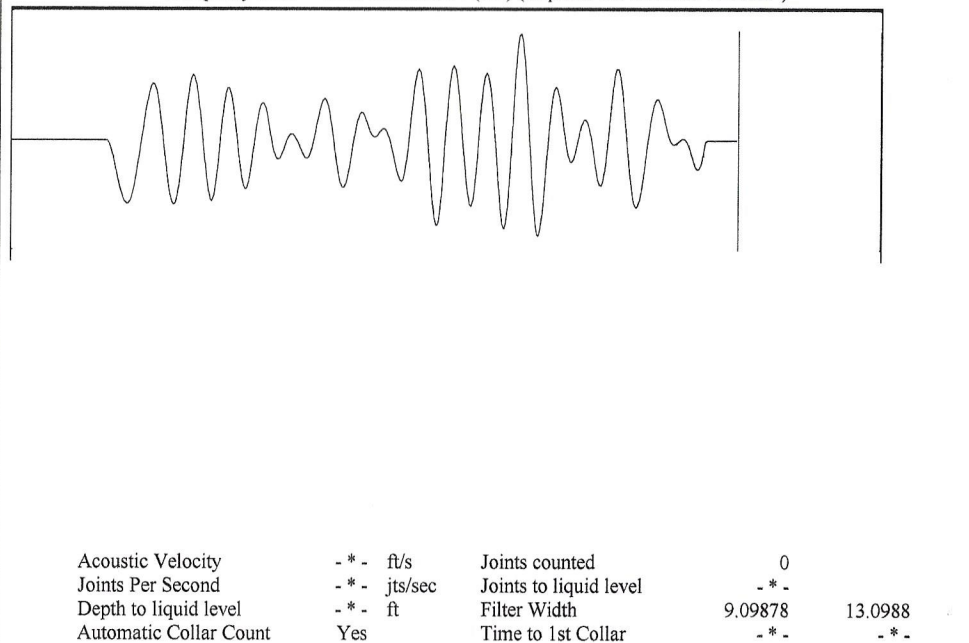
Group: MyWells Well: L Maune #4 (TA) (acquired on: 05/09/18 11:25:09)



Group: MyWells Well: L Maune #4 (TA) (acquired on: 05/09/18 11:25:09)

Production	Potential	Casing Pressure	Producing
Current			
Oil 0	- * - BBL/D	-0.1 psi (g)	
Water 0	- * - BBL/D	Casing Pressure Buildup	
Gas 0.0	- * - Mscf/D	-0.036 psi	
		1.00 min	
IPR Method	Vogel	Gas/Liquid Interface Pressure	
PBHP/SBHP	- * -	0.4 psi (g)	
Production Efficiency	0.0		
Oil 39 deg.API		Liquid Level Depth	Annular Gas Flow
Water 1.05 Sp.Gr.H2O		1579.25 ft	- * - Mscf/D
Gas 0.55 Sp.Gr.AIR		Pump Intake Depth	% Liquid
		- * - ft	100 %
Acoustic Velocity 1886.79 ft/s		Formation Depth	
		4424.00 ft	
Formation Submergence			Pump Intake
Total Gaseous Liquid Column HT (TVD)		2845 ft	- * - psi (g)
Equivalent Gas Free Liquid HT (TVD)		2845 ft	Producing BHP
			1293.7 psi (g)
Acoustic Test			Static BHP
			- * - psi (g)

Group: MyWells Well: L Maune #4 (TA) (acquired on: 05/09/18 11:25:09)



STATE OF KANSAS

CORPORATION COMMISSION
CONSERVATION DIVISION
DISTRICT No. 1
210 E. FRONTVIEW, SUITE A
DODGE CITY, KS 67801



PHONE: 620-682-7933
<http://kcc.ks.gov/>

GOVERNOR JEFF COLYER, M.D.

SHARI FEIST ALBRECHT, CHAIR | JAY SCOTT EMLER, COMMISSIONER | DWIGHT D. KEEN, COMMISSIONER

May 22, 2018

Kent Strube
Hartman Oil Co., Inc.
10500 E BERKELEY SQ PKWY STE 100
WICHITA, KS 67206

Re: Temporary Abandonment
API 15-055-20417-00-00
MAUNE L 4
SE/4 Sec.30-21S-33W
Finney County, Kansas

Dear Kent Strube:

"Your temporary abandonment (TA) application for the well listed above has been approved. In accordance with K.A.R. 82-3-111 the TA status of this well will expire 05/22/2019.

- * If you return this well to service or plug it, please notify the District Office.
- * If you sell this well you are required to file a Transfer of Operator form, T-1.
- * If the well will remain temporarily abandoned, you must submit a new TA application, CP-111, before 05/22/2019.

You may contact me at the number above if you have questions.

Very truly yours,

Michael Maier"