

KANSAS CORPORATION COMMISSION
OIL & GAS CONSERVATION DIVISION

TEMPORARY ABANDONMENT WELL APPLICATION

OPERATOR: License#
Name:
Address 1:
Address 2:
City: State: Zip:
Contact Person:
Phone:
Contact Person Email:
Field Contact Person:
Field Contact Person Phone:

API No. 15-
Spot Description:
Sec. Twp. S. R.
feet from N / S Line of Section
feet from E / W Line of Section
GPS Location: Lat: , Long:
Datum: NAD27 NAD83 WGS84
County: Elevation: GL KB
Lease Name: Well #:
Well Type: (check one) Oil Gas OG WSW Other:
SWD Permit #: ENHR Permit #:
Gas Storage Permit #:
Spud Date: Date Shut-In:

Table with 7 columns: Conductor, Surface, Production, Intermediate, Liner, Tubing. Rows include Size, Setting Depth, Amount of Cement, Top of Cement, Bottom of Cement.

Casing Fluid Level from Surface: How Determined? Date:
Casing Squeeze(s): to w / sacks of cement, to w / sacks of cement. Date:
Do you have a valid Oil & Gas Lease? Yes No
Depth and Type: Junk in Hole at Tools in Hole at Casing Leaks: Yes No Depth of casing leak(s):
Type Completion: ALT. I ALT. II Depth of: DV Tool: w / sacks of cement Port Collar: w / sack of cement
Packer Type: Size: Inch Set at: Feet
Total Depth: Plug Back Depth: Plug Back Method:

Geological Data:

Table with 4 columns: Formation Name, Formation Top, Formation Base, Completion Information. Rows 1 and 2.

UNDER PENALTY OF PERJURY I HEREBY ATTEST THAT THE INFORMATION CONTAINED HEREIN IS TRUE AND CORRECT TO THE BEST OF MY KNOWLEDGE

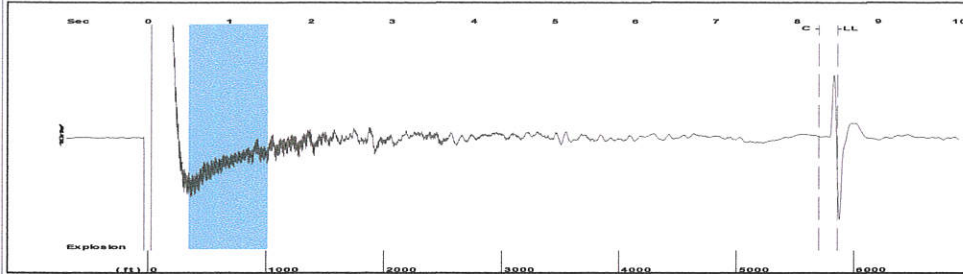
Submitted Electronically

Do NOT Write in This Space - KCC USE ONLY
Date Tested: Results: Date Plugged: Date Repaired: Date Put Back in Service:
Review Completed by: Comments:
TA Approved: Yes Denied Date:

Mail to the Appropriate KCC Conservation Office:

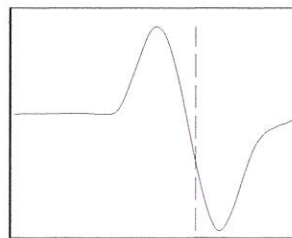
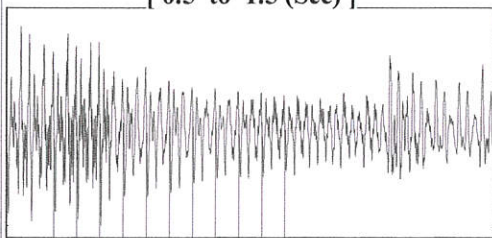
Table with 3 columns: District Office, Address, Phone. Rows for District Office #1, #2, #3, #4.

Group: TA'D WELLS Well: MEREDITHE JEANNE OWWO A-1 (acquired on: 05/07/18 11:39:57)



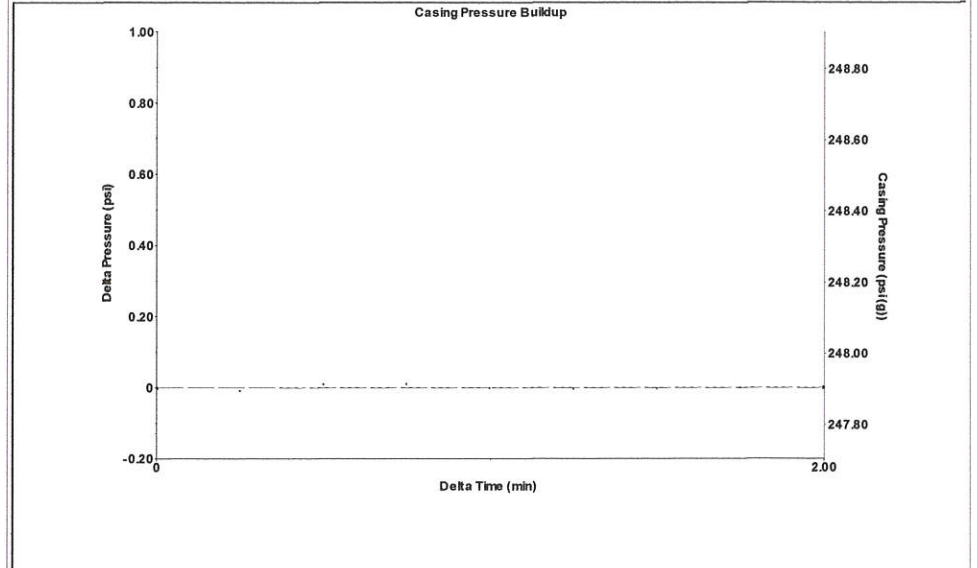
Filter Type High Pass Automatic Collar Count Yes Time 8.494 sec  
 Manual Acoustic Velo 1334.74 ft/s Manual JTS/sec 21.0526 Joints 184.837 Jts  
 Depth 5859.33 ft

[ 0.5 to 1.5 (Sec) ]



Analysis Method: Automatic

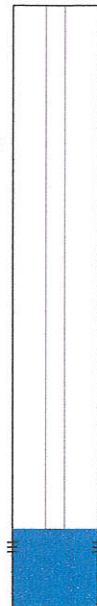
Group: TA'D WELLS Well: MEREDITHE JEANNE OWWO A-1 (acquired on: 05/07/18 11:39:57)



Change in Pressure -0.00 psi PT9424  
 Change in Time 2.00 min Range 0 - ? psi

Group: TA'D WELLS Well: MEREDITHE JEANNE OWWO A-1 (acquired on: 05/07/18 11:39:57)

**Production**  
 Current Potential Casing Pressure  
 Oil - \* - - \* - BBL/D 247.9 psi (g)  
 Water - \* - - \* - BBL/D Casing Pressure Buildup  
 Gas - \* - - \* - Mscf/D -0.001 psi  
 2.00 min  
 IPR Method Vogel Gas/Liquid Interface Pressure  
 PBHP/SBHP - \* - 282.9 psi (g)  
 Production Efficiency 0.0  
 Liquid Level Depth  
 Oil 40 deg.API 5859.33 ft  
 Water 1.05 Sp.Gr.H2O  
 Gas 0.62 Sp.Gr.AIR  
 Pump Intake Depth  
 Acoustic Velocity 1379.64 ft/s Formation Depth  
 6085.00 ft

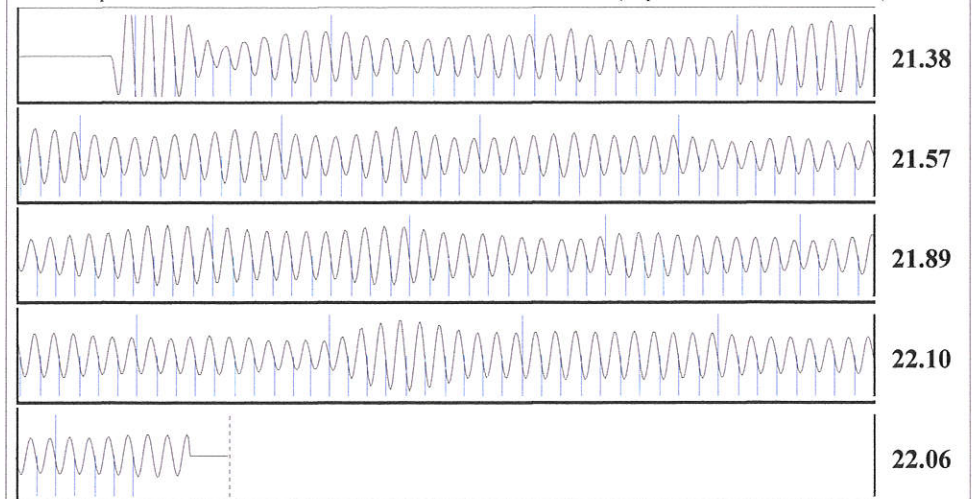


**Producing**  
 Annular Gas Flow  
 0 Mscf/D  
 % Liquid 100 %  
 Pump Intake 283.1 psi (g)  
 Producing BHP 385.4 psi (g)  
 Static BHP - \* - psi (g)

Formation Submergence  
 Total Gaseous Liquid Column HT (TVD) 1 ft  
 Equivalent Gas Free Liquid HT (TVD) 1 ft

Acoustic Test

Group: TA'D WELLS Well: MEREDITHE JEANNE OWWO A-1 (acquired on: 05/07/18 11:39:57)



Acoustic Velocity 1379.64 ft/s Joints counted 174  
 Joints Per Second 21.7609 jts/sec Joints to liquid level 184.837  
 Depth to liquid level 5859.33 ft Filter Width 19.0526 23.0526  
 Automatic Collar Count Yes Time to 1st Collar 0.272 8.268

# STATE OF KANSAS

CORPORATION COMMISSION  
CONSERVATION DIVISION  
DISTRICT No. 1  
210 E. FRONTVIEW, SUITE A  
DODGE CITY, KS 67801



PHONE: 620-682-7933  
<http://kcc.ks.gov/>

GOVERNOR JEFF COLYER, M.D.

SHARI FEIST ALBRECHT, CHAIR | JAY SCOTT EMLER, COMMISSIONER | DWIGHT D. KEEN, COMMISSIONER

May 15, 2018

Katherine McClurkan  
Merit Energy Company, LLC  
13727 Noel Road, Suite 1200  
Dallas, TX 75240

Re: Temporary Abandonment  
API 15-129-21355-00-01  
Meredithe Jeanne OWWO 1  
SW/4 Sec.31-31S-39W  
Morton County, Kansas

Dear Katherine McClurkan:

"Your temporary abandonment (TA) application for the well listed above has been approved. In accordance with K.A.R. 82-3-111 the TA status of this well will expire 05/15/2019.

- \* If you return this well to service or plug it, please notify the District Office.
- \* If you sell this well you are required to file a Transfer of Operator form, T-1.
- \* If the well will remain temporarily abandoned, you must submit a new TA application, CP-111, before 05/15/2019.

You may contact me at the number above if you have questions.

Very truly yours,

Michael Maier"