

KANSAS CORPORATION COMMISSION
OIL & GAS CONSERVATION DIVISION

TEMPORARY ABANDONMENT WELL APPLICATION

OPERATOR: License#
Name:
Address 1:
Address 2:
City: State: Zip:
Contact Person:
Phone:
Contact Person Email:
Field Contact Person:
Field Contact Person Phone:

API No. 15-
Spot Description:
Sec. Twp. S. R.
feet from N / S Line of Section
feet from E / W Line of Section
GPS Location: Lat: , Long:
Datum: NAD27 NAD83 WGS84
County: Elevation: GL KB
Lease Name: Well #:
Well Type: (check one) Oil Gas OG WSW Other:
SWD Permit #: ENHR Permit #:
Gas Storage Permit #:
Spud Date: Date Shut-In:

Table with 7 columns: Conductor, Surface, Production, Intermediate, Liner, Tubing. Rows include Size, Setting Depth, Amount of Cement, Top of Cement, Bottom of Cement.

Casing Fluid Level from Surface: How Determined? Date:
Casing Squeeze(s): to w / sacks of cement, to w / sacks of cement. Date:
Do you have a valid Oil & Gas Lease? Yes No
Depth and Type: Junk in Hole at Tools in Hole at Casing Leaks: Yes No Depth of casing leak(s):
Type Completion: ALT. I ALT. II Depth of: DV Tool: w / sacks of cement Port Collar: w / sack of cement
Packer Type: Size: Inch Set at: Feet
Total Depth: Plug Back Depth: Plug Back Method:

Geological Data:

Table with 4 columns: Formation Name, Formation Top, Formation Base, Completion Information. Rows 1 and 2.

UNDER PENALTY OF PERJURY I HEREBY ATTEST THAT THE INFORMATION CONTAINED HEREIN IS TRUE AND CORRECT TO THE BEST OF MY KNOWLEDGE

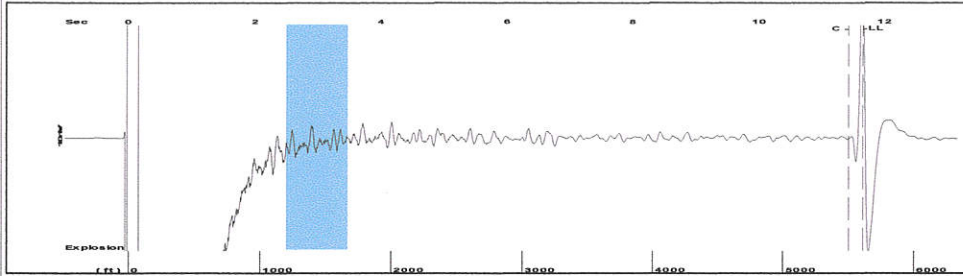
Submitted Electronically

Do NOT Write in This Space - KCC USE ONLY
Date Tested: Results: Date Plugged: Date Repaired: Date Put Back in Service:
Review Completed by: Comments:
TA Approved: Yes Denied Date:

Mail to the Appropriate KCC Conservation Office:

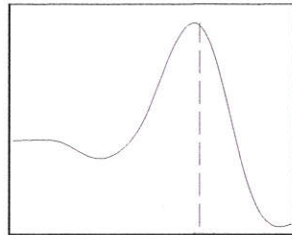
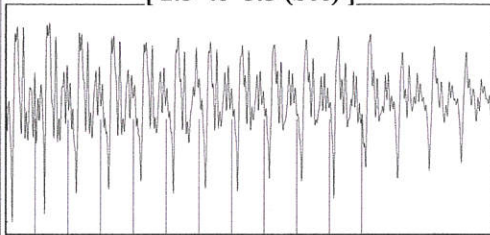
Table with 3 columns: District Office, Address, Phone. Rows for District Office #1, #2, #3, #4.

Group: TA'D WELLS Well: ANSLEY A-3 (acquired on: 05/07/18 11:16:42)



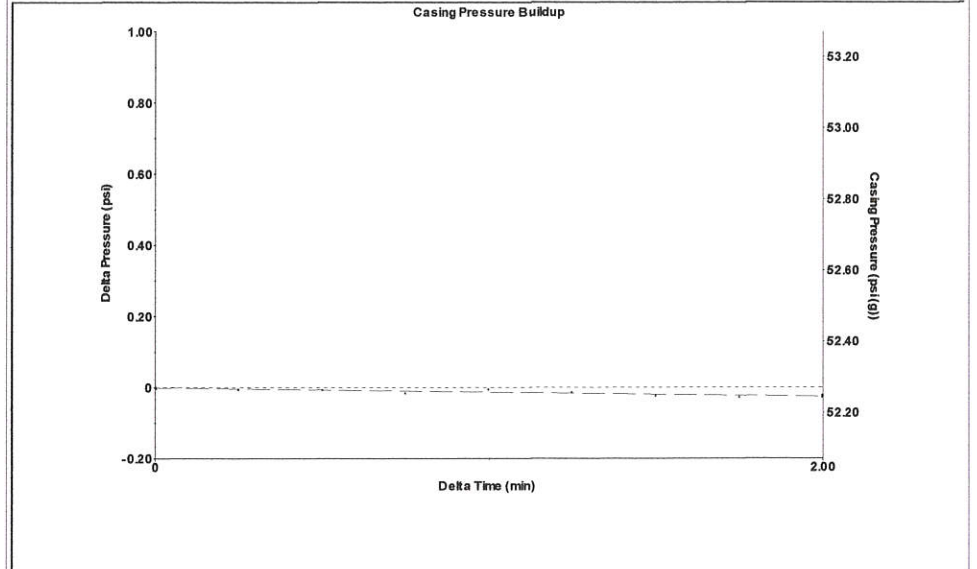
Filter Type High Pass Automatic Collar Count Yes Time 11.665 sec
 Manual Acoustic Velo 946.269 ft/s Manual JTS/sec 14.9254 Joints 176.97 Jts
 Depth 5609.95 ft

[2.5 to 3.5 (Sec)]



Analysis Method: Automatic

Group: TA'D WELLS Well: ANSLEY A-3 (acquired on: 05/07/18 11:16:42)



Change in Pressure -0.03 psi PT9424
 Change in Time 2.00 min Range 0 - ? psi

Group: TA'D WELLS Well: ANSLEY A-3 (acquired on: 05/07/18 11:16:42)

Production		Casing Pressure	52.3 psi (g)
Current	Potential	Casing Pressure Buildup	-0.026 psi
Oil - * -	- * - BBL/D	2.00 min	
Water - * -	- * - BBL/D	Gas/Liquid Interface Pressure	66.5 psi (g)
Gas - * -	- * - Mscf/D	Liquid Level Depth	5609.95 ft
IPR Method	Vogel	Pump Intake Depth	5641.00 ft
PBHP/SBHP	- * -	Formation Depth	6055.00 ft
Production Efficiency	0.0		
Oil 40 deg.API			
Water 1.05 Sp.Gr.H2O			
Gas 1.01 Sp.Gr.AIR			
Acoustic Velocity	961.843 ft/s		



Producing	
Annular Gas Flow	0 Mscf/D
% Liquid	100 %
Pump Intake	77.1 psi (g)
Producing BHP	265.4 psi (g)
Static BHP	- * - psi (g)

Formation Submergence
 Total Gaseous Liquid Column HT (TVD) 31 ft
 Equivalent Gas Free Liquid HT (TVD) 31 ft

Acoustic Test

Group: TA'D WELLS Well: ANSLEY A-3 (acquired on: 05/07/18 11:16:42)



Acoustic Velocity	961.843 ft/s	Joints counted	165
Joints Per Second	15.171 jts/sec	Joints to liquid level	176.97
Depth to liquid level	5609.95 ft	Filter Width	12.9254 16.9254
Automatic Collar Count	Yes	Time to 1st Collar	0.568 11.444

STATE OF KANSAS

CORPORATION COMMISSION
CONSERVATION DIVISION
DISTRICT No. 1
210 E. FRONTVIEW, SUITE A
DODGE CITY, KS 67801



PHONE: 620-682-7933
<http://kcc.ks.gov/>

GOVERNOR JEFF COLYER, M.D.

SHARI FEIST ALBRECHT, CHAIR | JAY SCOTT EMLER, COMMISSIONER | DWIGHT D. KEEN, COMMISSIONER

May 15, 2018

Katherine McClurkan
Merit Energy Company, LLC
13727 Noel Road, Suite 1200
Dallas, TX 75240

Re: Temporary Abandonment
API 15-129-21129-00-00
Ansley A 3
NW/4 Sec.09-32S-39W
Morton County, Kansas

Dear Katherine McClurkan:

"Your temporary abandonment (TA) application for the well listed above has been approved. In accordance with K.A.R. 82-3-111 the TA status of this well will expire 05/15/2019.

- * If you return this well to service or plug it, please notify the District Office.
- * If you sell this well you are required to file a Transfer of Operator form, T-1.
- * If the well will remain temporarily abandoned, you must submit a new TA application, CP-111, before 05/15/2019.

You may contact me at the number above if you have questions.

Very truly yours,

Michael Maier"