

KANSAS CORPORATION COMMISSION
OIL & GAS CONSERVATION DIVISION

TEMPORARY ABANDONMENT WELL APPLICATION

OPERATOR: License#
Name:
Address 1:
Address 2:
City: State: Zip:
Contact Person:
Phone:
Contact Person Email:
Field Contact Person:
Field Contact Person Phone:

API No. 15-
Spot Description:
Sec. Twp. S. R.
feet from N / S Line of Section
feet from E / W Line of Section
GPS Location: Lat: , Long:
Datum: NAD27 NAD83 WGS84
County: Elevation: GL KB
Lease Name: Well #:
Well Type: Oil Gas OG WSW Other:
SWD Permit #: ENHR Permit #:
Gas Storage Permit #:
Spud Date: Date Shut-In:

Table with 7 columns: Conductor, Surface, Production, Intermediate, Liner, Tubing. Rows include Size, Setting Depth, Amount of Cement, Top of Cement, Bottom of Cement.

Casing Fluid Level from Surface: How Determined? Date:
Casing Squeeze(s): to w / sacks of cement, to w / sacks of cement. Date:
Do you have a valid Oil & Gas Lease? Yes No
Depth and Type: Junk in Hole at Tools in Hole at Casing Leaks: Yes No Depth of casing leak(s):
Type Completion: ALT. I ALT. II Depth of: DV Tool: w / sacks of cement Port Collar: w / sack of cement
Packer Type: Size: Inch Set at: Feet
Total Depth: Plug Back Depth: Plug Back Method:

Geological Data:

Table with 4 columns: Formation Name, Formation Top, Formation Base, Completion Information. Rows 1 and 2.

UNDER PENALTY OF PERJURY I HEREBY ATTEST THAT THE INFORMATION CONTAINED HEREIN IS TRUE AND CORRECT TO THE BEST OF MY KNOWLEDGE

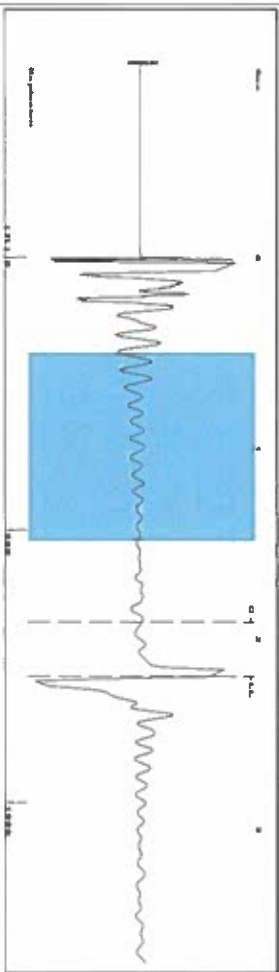
Submitted Electronically

Do NOT Write in This Space - KCC USE ONLY
Date Tested: Results: Date Plugged: Date Repaired: Date Put Back in Service:
Review Completed by: Comments:
TA Approved: Yes Denied Date:

Mail to the Appropriate KCC Conservation Office:

Table with 3 columns: District Office, Address, Phone. Rows for District Office #1, #2, #3, #4.

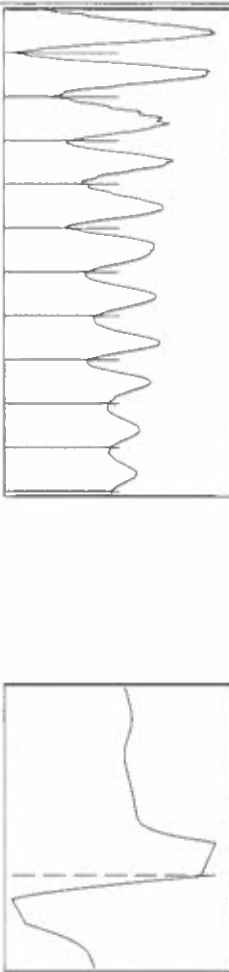
Group: SUBLETTE Well: SWLVLU 20 (acquired on: 05/01/18 14:31:33)



Filter Type High Pass  
Manual Acoustic Velo 703.663 ft/s  
Automatic Collar Count Yes  
Manual JTS/sec 11.0988

Time 2.197 sec  
Joints 24.2316 JIS  
Depth 768.14 ft

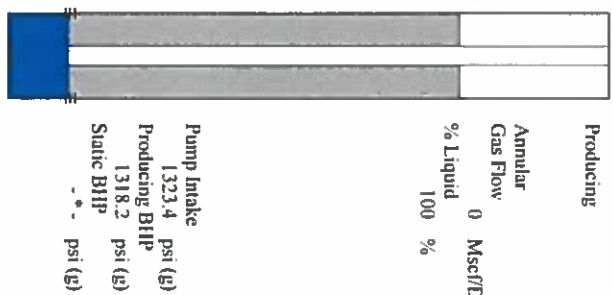
0.5 to 1.5 (Sec) |



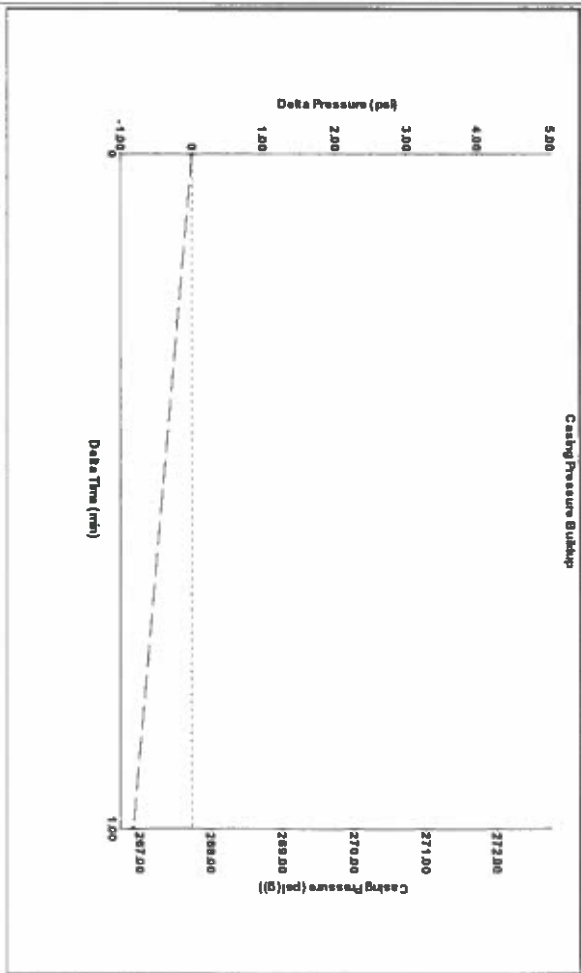
Analysis Method: Automatic

Group: SUBLETTE Well: SWLVLU 20 (acquired on: 05/01/18 14:31:33)

Production	Potential	Casing Pressure	Producing
Oil -*-	BBL/D	267.7 psi (g)	Annular Gas Flow 0 Mscf/D
Water -*-	BBL/D	-0.8 psi	% Liquid 100 %
Gas -*-	Mscf/D	1.00 min	
IPR Method PBHP/SBHP	Vogel	Gas/Liquid Interface Pressure 278.5 psi (g)	
Production Efficiency		Liquid Level Depth 768.14 ft	
Oil 40 deg API		Pump Intake Depth 4150.00 ft	
Water 1.05 Sp.Gr. H2O		Formation Depth 4132.00 ft	
Gas 1.16 Sp.Gr. AIR			
Acoustic Velocity	699.265 ft/s		
Formation Submergence			
Total Gaseous Liquid Column HIT (TVD)	3382 ft		
Equivalent Gas Free Liquid HIT (TVD)	3382 ft		
Acoustic Test			

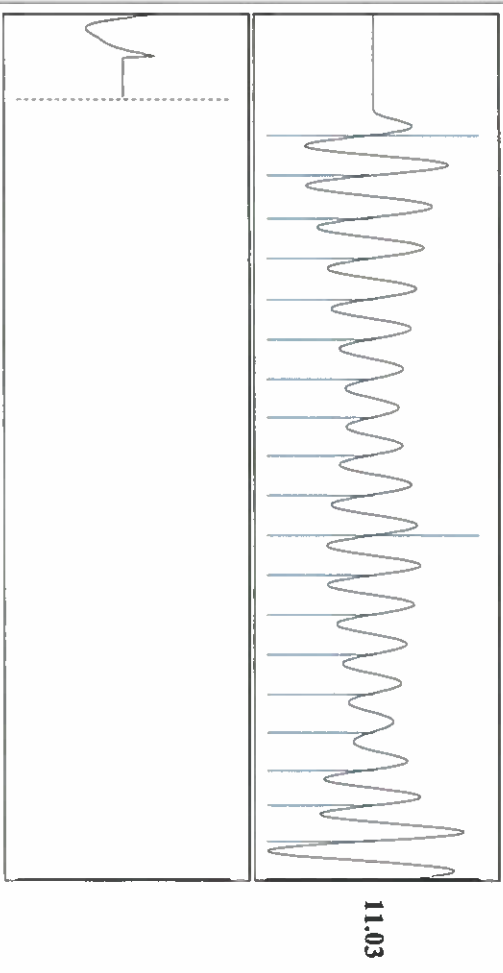


Group: SUBLETTE Well: SWLVLU 20 (acquired on: 05/01/18 14:31:33)



Change in Pressure -0.82 psi  
Change in Time 1.00 min  
PTI 4679  
Range 0 - ? psi

Group: SUBLETTE Well: SWLVLU 20 (acquired on: 05/01/18 14:31:33)



Acoustic Velocity 699.265 ft/s  
Joints Per Second 11.0294 JIS/sec  
Depth to liquid level 768.142 ft  
Automatic Collar Count Yes

Joints counted 18  
Joints to liquid level 24.2316  
Filter Width 9.09878  
Time to 1st Collar 0.28

# STATE OF KANSAS

CORPORATION COMMISSION  
CONSERVATION DIVISION  
DISTRICT No. 1  
210 E. FRONTVIEW, SUITE A  
DODGE CITY, KS 67801



PHONE: 620-682-7933  
<http://kcc.ks.gov/>

GOVERNOR JEFF COLYER, M.D.

SHARI FEIST ALBRECHT, CHAIR | JAY SCOTT EMLER, COMMISSIONER | DWIGHT D. KEEN, COMMISSIONER

May 15, 2018

Katherine McClurkan  
Merit Energy Company, LLC  
13727 Noel Road, Suite 1200  
Dallas, TX 75240

Re: Temporary Abandonment  
API 15-081-21737-00-00  
SWLVLU 20  
NW/4 Sec.30-30S-33W  
Haskell County, Kansas

Dear Katherine McClurkan:

"Your temporary abandonment (TA) application for the well listed above has been approved. In accordance with K.A.R. 82-3-111 the TA status of this well will expire 05/15/2019.

- \* If you return this well to service or plug it, please notify the District Office.
- \* If you sell this well you are required to file a Transfer of Operator form, T-1.
- \* If the well will remain temporarily abandoned, you must submit a new TA application, CP-111, before 05/15/2019.

You may contact me at the number above if you have questions.

Very truly yours,

Michael Maier"