

KANSAS CORPORATION COMMISSION
OIL & GAS CONSERVATION DIVISION

TEMPORARY ABANDONMENT WELL APPLICATION

OPERATOR: License#
Name:
Address 1:
Address 2:
City: State: Zip:
Contact Person:
Phone:
Contact Person Email:
Field Contact Person:
Field Contact Person Phone:

API No. 15-
Spot Description:
Sec. Twp. S. R.
GPS Location: Lat: Long:
Datum: NAD27 NAD83 WGS84
County: Elevation:
Lease Name: Well #:
Well Type: Oil Gas OG WSW Other:
SWD Permit #: ENHR Permit #:
Gas Storage Permit #:
Spud Date: Date Shut-In:

Table with 7 columns: Conductor, Surface, Production, Intermediate, Liner, Tubing. Rows include Size, Setting Depth, Amount of Cement, Top of Cement, Bottom of Cement.

Casing Fluid Level from Surface: How Determined? Date:
Casing Squeeze(s): to w / sacks of cement, to w / sacks of cement. Date:
Do you have a valid Oil & Gas Lease? Yes No
Depth and Type: Junk in Hole at Tools in Hole at Casing Leaks: Yes No Depth of casing leak(s):
Type Completion: ALT. I ALT. II Depth of: DV Tool: w / sacks of cement Port Collar: w / sack of cement
Packer Type: Size: Inch Set at: Feet
Total Depth: Plug Back Depth: Plug Back Method:

Geological Data:

Table with 4 columns: Formation Name, Formation Top, Formation Base, Completion Information. Rows 1 and 2.

UNDER PENALTY OF PERJURY I HEREBY ATTEST THAT THE INFORMATION CONTAINED HEREIN IS TRUE AND CORRECT TO THE BEST OF MY KNOWLEDGE

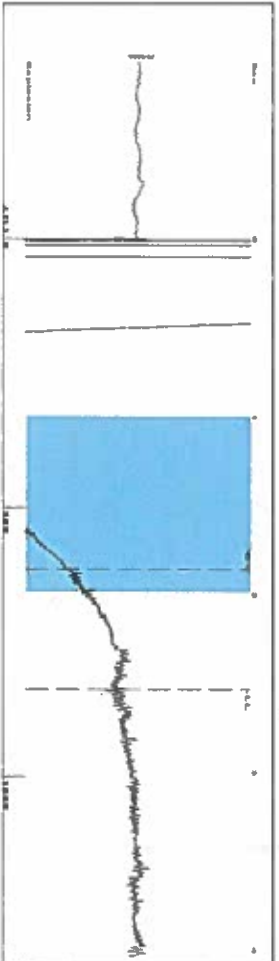
Submitted Electronically

Do NOT Write in This Space - KCC USE ONLY
Date Tested: Results: Date Plugged: Date Repaired: Date Put Back in Service:
Review Completed by: Comments:
TA Approved: Yes Denied Date:

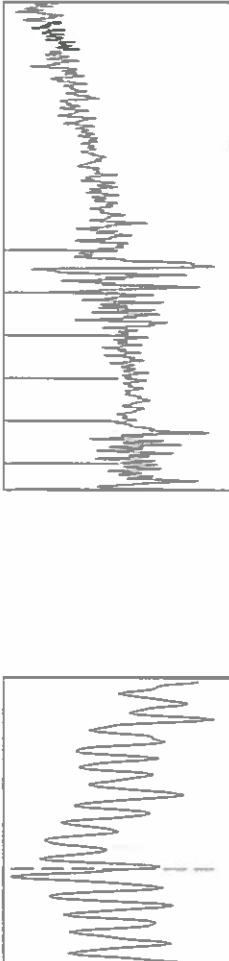
Mail to the Appropriate KCC Conservation Office:

Table with 2 columns: Office Address, Phone. Rows for KCC District Office #1, #2, #3, #4.

Group: SUBLETTE Well: SWLVLU 5 (acquired on: 04/30/18 14:58:58)



Filter Type High Pass Automatic Collar Count Yes
 Manual Acoustic Velo 724.571 ft/s Manual JTS/sec 11.4286
 Time 2.536 sec
 Joints 26.4167 Jts
 Depth 837.41 ft



Analysis Method: Automatic

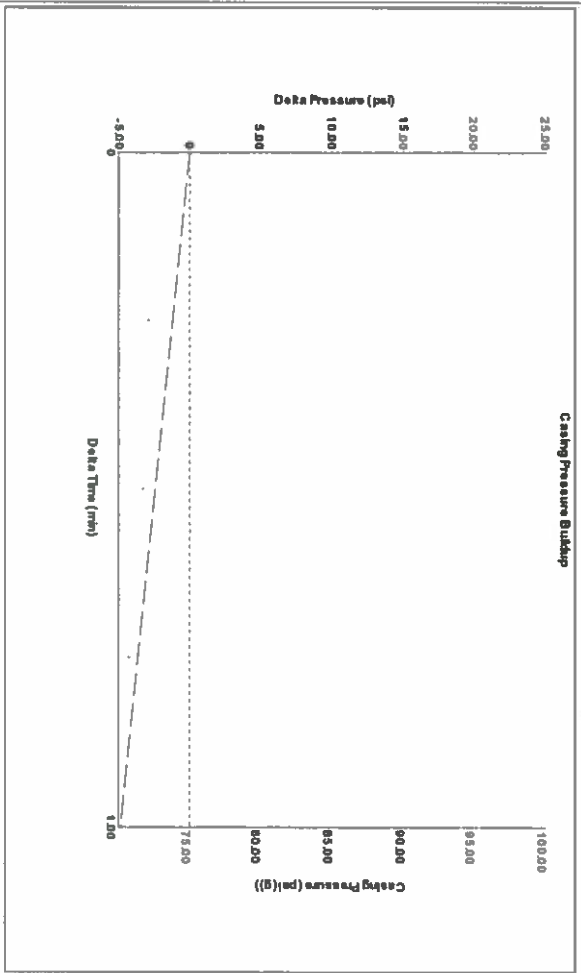
Group: SUBLETTE Well: SWLVLU 5 (acquired on: 04/30/18 14:58:58)

Production	Potential	Casing Pressure	Producing
Oil -*-	BBL/D -*-	75.3 psi (g)	Annular Gas Flow 0 Msc/D
Water -*-	BBLD -*-	Casing Pressure Buildup -4.9 psi	% Liquid 100 %
Gas -*-	Msc/D -*-	1.00 min	
IPR Method PBIIP/SBIP	Vogel -*-	Gas/Liquid Interface Pressure 78.8 psi (g)	
Production Efficiency 0.0		Liquid Level Depth 837.41 ft	
Oil 40 deg API		Pump Intake Depth 4139.00 ft	
Water 1.05 Sp.Gr. H2O		Formation Depth 4136.00 ft	
Gas 1.26 Sp.Gr. AIR			
Acoustic Velocity 660.417 ft/s			



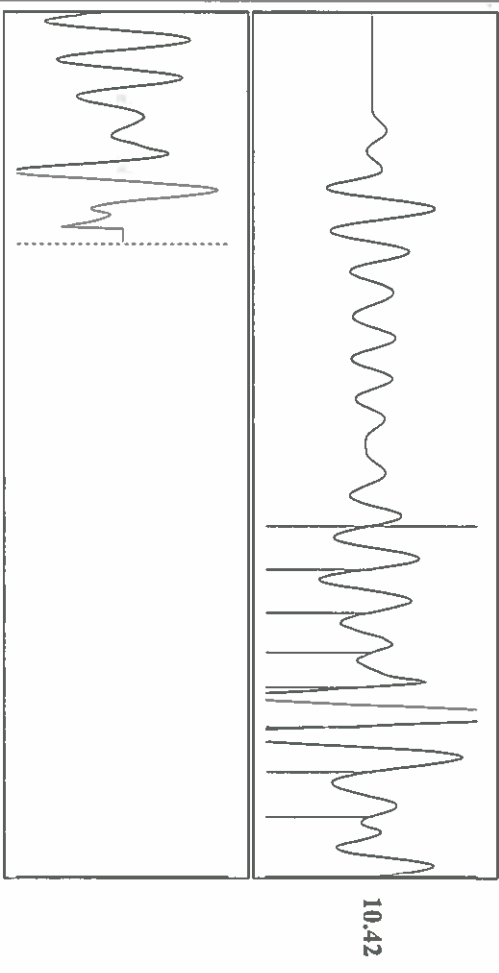
Pump Intake 1127.5 psi (g)
 Producing BHP 1126.7 psi (g)
 Static BHP -*- psi (g)

Group: SUBLETTE Well: SWLVLU 5 (acquired on: 04/30/18 14:58:58)



Change in Pressure -4.88 psi PTT 4679
 Change in Time 1.00 min Range 0 - ? psi

Group: SUBLETTE Well: SWLVLU 5 (acquired on: 04/30/18 14:58:58)



Acoustic Velocity 660.417 ft/s Joints counted 7
 Joints Per Second 10.4167 Jts/Sec Joints to liquid level 26.4167
 Depth to liquid level 837.408 ft Filter Width 9.42857
 Automatic Collar Count Yes Time to 1st Collar 1.188

STATE OF KANSAS

CORPORATION COMMISSION
CONSERVATION DIVISION
DISTRICT No. 1
210 E. FRONTVIEW, SUITE A
DODGE CITY, KS 67801



PHONE: 620-682-7933
<http://kcc.ks.gov/>

GOVERNOR JEFF COLYER, M.D.

SHARI FEIST ALBRECHT, CHAIR | JAY SCOTT EMLER, COMMISSIONER | DWIGHT D. KEEN, COMMISSIONER

May 15, 2018

Katherine McClurkan
Merit Energy Company, LLC
13727 Noel Road, Suite 1200
Dallas, TX 75240

Re: Temporary Abandonment
API 15-081-21106-00-05
SWLVLU 5
SW/4 Sec.30-30S-33W
Haskell County, Kansas

Dear Katherine McClurkan:

"Your temporary abandonment (TA) application for the well listed above has been approved. In accordance with K.A.R. 82-3-111 the TA status of this well will expire 05/15/2019.

- * If you return this well to service or plug it, please notify the District Office.
- * If you sell this well you are required to file a Transfer of Operator form, T-1.
- * If the well will remain temporarily abandoned, you must submit a new TA application, CP-111, before 05/15/2019.

You may contact me at the number above if you have questions.

Very truly yours,

Michael Maier"