

KANSAS CORPORATION COMMISSION
OIL & GAS CONSERVATION DIVISION

TEMPORARY ABANDONMENT WELL APPLICATION

All blanks must be complete

OPERATOR: License# _____
 Name: _____
 Address 1: _____
 Address 2: _____
 City: _____ State: _____ Zip: _____ + _____
 Contact Person: _____
 Phone: (_____) _____
 Contact Person Email: _____
 Field Contact Person: _____
 Field Contact Person Phone: (_____) _____

API No. 15- _____
 Spot Description: _____
 _____ - _____ - _____ - _____ Sec. _____ Twp. _____ S. R. _____ E W
 _____ feet from N / S Line of Section
 _____ feet from E / W Line of Section
 GPS Location: Lat: _____, Long: _____
(e.g. xx.xxxxx) (e.g. -xxx.xxxxx)
 Datum: NAD27 NAD83 WGS84
 County: _____ Elevation: _____ GL KB
 Lease Name: _____ Well #: _____
 Well Type: (check one) Oil Gas OG WSW Other: _____
 SWD Permit #: _____ ENHR Permit #: _____
 Gas Storage Permit #: _____
 Spud Date: _____ Date Shut-In: _____

	Conductor	Surface	Production	Intermediate	Liner	Tubing
Size						
Setting Depth						
Amount of Cement						
Top of Cement						
Bottom of Cement						

Casing Fluid Level from Surface: _____ How Determined? _____ Date: _____
 Casing Squeeze(s): _____ to _____ w / _____ sacks of cement, _____ to _____ w / _____ sacks of cement. Date: _____
(top) (bottom) (top) (bottom)
 Do you have a valid Oil & Gas Lease? Yes No
 Depth and Type: Junk in Hole at _____ Tools in Hole at _____ Casing Leaks: Yes No Depth of casing leak(s): _____
(depth) (depth)
 Type Completion: ALT. I ALT. II Depth of: DV Tool: _____ w / _____ sacks of cement Port Collar: _____ w / _____ sack of cement
(depth) (depth)
 Packer Type: _____ Size: _____ Inch Set at: _____ Feet
 Total Depth: _____ Plug Back Depth: _____ Plug Back Method: _____

Geological Data:

Formation Name	Formation Top	Formation Base	Completion Information
1. _____	At: _____	to _____ Feet	Perforation Interval _____ to _____ Feet or Open Hole Interval _____ to _____ Feet
2. _____	At: _____	to _____ Feet	Perforation Interval _____ to _____ Feet or Open Hole Interval _____ to _____ Feet

UNDER PENALTY OF PERJURY I HEREBY ATTEST THAT THE INFORMATION CONTAINED HEREIN IS TRUE AND CORRECT TO THE BEST OF MY KNOWLEDGE

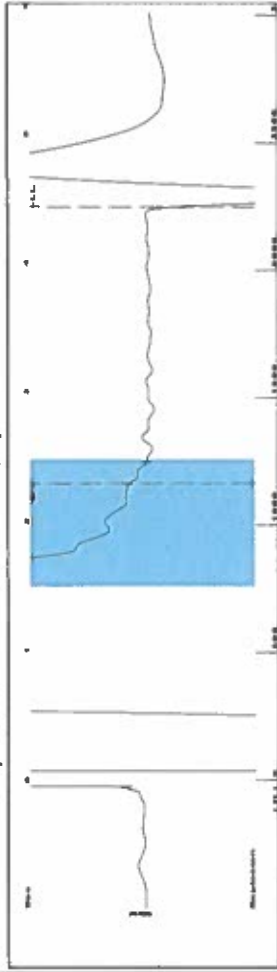
Submitted Electronically

Do NOT Write in This Space - KCC USE ONLY	Date Tested: _____	Results: _____	Date Plugged: _____	Date Repaired: _____	Date Put Back in Service: _____
	Review Completed by: _____ Comments: _____				
TA Approved: <input type="checkbox"/> Yes <input type="checkbox"/> Denied Date: _____					

Mail to the Appropriate KCC Conservation Office:

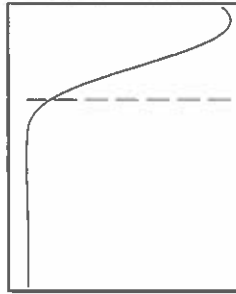
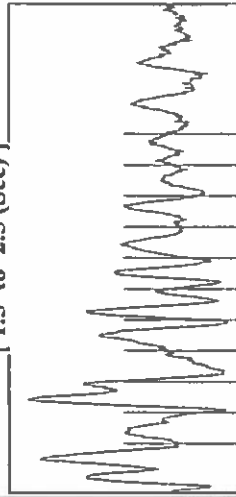
	KCC District Office #1 - 210 E. Frontview, Suite A, Dodge City, KS 67801	Phone 620.682.7933
	KCC District Office #2 - 3450 N. Rock Road, Building 600, Suite 601, Wichita, KS 67226	Phone 316.337.7400
	KCC District Office #3 - 137 E. 21st St., Chanute, KS 66720	Phone 620.902.6450
	KCC District Office #4 - 2301 E. 13th Street, Hays, KS 67601-2651	Phone 785.261.6250

Group: SUBLETTE Well: KELLS C-3 (acquired on: 05/03/18 13:52:45)



Filter Type High Pass Automatic Collar Count Yes Time 4.438 sec
 Manual Acoustic Velocity (000 ft/s) Manual JTS/sec 15.7729 Joints 70.9269 Jts
 Depth 2248.38 ft

[1.5 to 2.5 (Sec)]

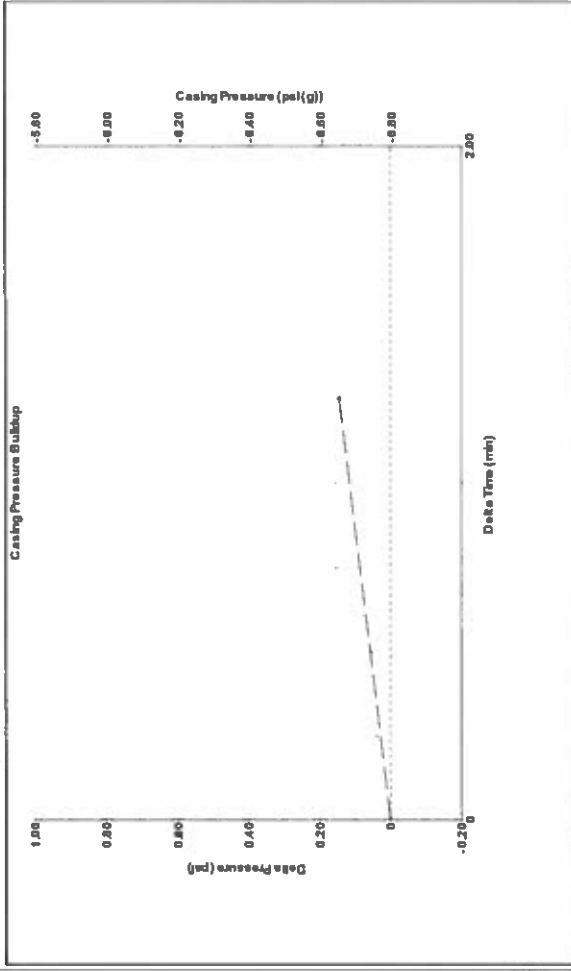


Analysis Method: Automatic

Group: SUBLETTE Well: KELLS C-3 (acquired on: 05/03/18 13:52:45)

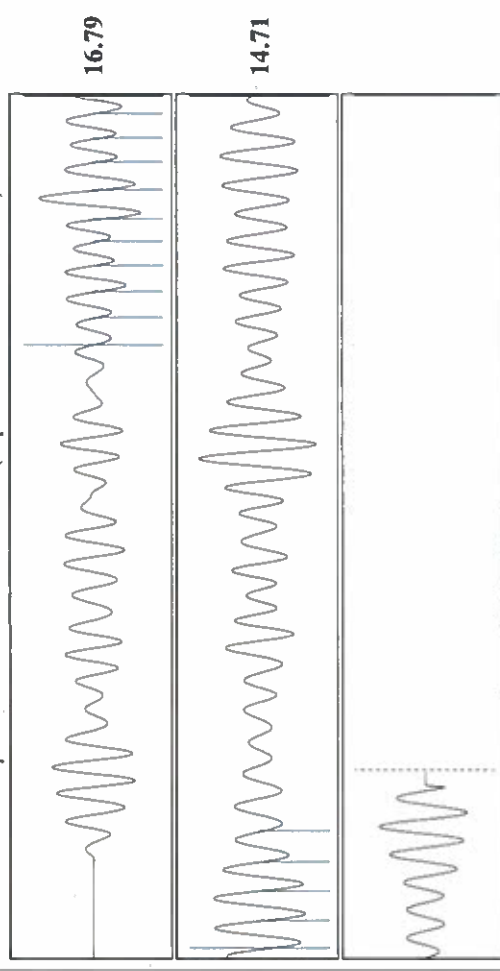
Production Current	Potential	Casing Pressure	Producing
Oil -.- BBL/D	-.- BBL/D	-6.8 psi (g)	Annular
Water -.- BBL/D	-.- BBL/D	Casing Pressure Buildup	Gas Flow
Gas -.- Mscf/D	-.- Mscf/D	0.1 psi	% Liquid
IPR Method Vogel	Gas/Liquid Interface Pressure	1.25 min	90 %
PBHP/SBHP -.-	-6.2 psi (g)	Liquid Level Depth	Pump Intake
Production Efficiency 0.0		2248.38 ft	218.5 psi (g)
Oil 40 deg-API		Pump Intake Depth	Producing BHP
Water 1.05 Sp.Gr.H2O		2983.00 ft	219.7 psi (g)
Gas 0.97 Sp.Gr.AIR		Formation Depth	Static BHP
Acoustic Velocity 1013.24 ft/s		2986.00 ft	.-. psi (g)
Formation Submergence			
Total Gaseous Liquid Column HT (TVD)	735 ft		
Equivalent Gas Free Liquid HT (TVD)	658 ft		
Acoustic Test			

Group: SUBLETTE Well: KELLS C-3 (acquired on: 05/03/18 13:52:45)



Change in Pressure 0.14 psi PT14679 Range
 Change in Time 1.25 min

Group: SUBLETTE Well: KELLS C-3 (acquired on: 05/03/18 13:52:45)



Acoustic Velocity 1013.24 ft/s Joints counted 14
 Joints Per Second 15.9817 Jts/sec Joints to liquid level 70.9269
 Depth to liquid level 2248.38 ft Filter Width 13.7729
 Automatic Collar Count Yes Time to 1st Collar 1.42

STATE OF KANSAS

CORPORATION COMMISSION
CONSERVATION DIVISION
DISTRICT No. 1
210 E. FRONTVIEW, SUITE A
DODGE CITY, KS 67801



PHONE: 620-682-7933
<http://kcc.ks.gov/>

GOVERNOR JEFF COLYER, M.D.

SHARI FEIST ALBRECHT, CHAIR | JAY SCOTT EMLER, COMMISSIONER | DWIGHT D. KEEN, COMMISSIONER

May 15, 2018

Katherine McClurkan
Merit Energy Company, LLC
13727 Noel Road, Suite 1200
Dallas, TX 75240

Re: Temporary Abandonment
API 15-081-20112-00-00
Kells C 3
NE/4 Sec.29-27S-34W
Haskell County, Kansas

Dear Katherine McClurkan:

"Your temporary abandonment (TA) application for the well listed above has been approved. In accordance with K.A.R. 82-3-111 the TA status of this well will expire 05/15/2019.

- * If you return this well to service or plug it, please notify the District Office.
- * If you sell this well you are required to file a Transfer of Operator form, T-1.
- * If the well will remain temporarily abandoned, you must submit a new TA application, CP-111, before 05/15/2019.

You may contact me at the number above if you have questions.

Very truly yours,

Michael Maier"