

KANSAS CORPORATION COMMISSION
OIL & GAS CONSERVATION DIVISION

TEMPORARY ABANDONMENT WELL APPLICATION

OPERATOR: License#
Name:
Address 1:
Address 2:
City: State: Zip:
Contact Person:
Phone:
Contact Person Email:
Field Contact Person:
Field Contact Person Phone:

API No. 15-
Spot Description:
Sec. Twp. S. R.
GPS Location: Lat, Long
Datum: NAD27, NAD83, WGS84
County: Elevation:
Lease Name: Well #:
Well Type: Oil, Gas, OG, WSW, Other
SWD Permit #: ENHR Permit #:
Gas Storage Permit #:
Spud Date: Date Shut-In:

Table with 7 columns: Conductor, Surface, Production, Intermediate, Liner, Tubing. Rows include Size, Setting Depth, Amount of Cement, Top of Cement, Bottom of Cement.

Casing Fluid Level from Surface: How Determined? Date:
Casing Squeeze(s): to w / sacks of cement, to w / sacks of cement. Date:
Do you have a valid Oil & Gas Lease? Yes No
Depth and Type: Junk in Hole at Tools in Hole at Casing Leaks: Yes No Depth of casing leak(s):
Type Completion: ALT. I ALT. II Depth of: DV Tool: w / sacks of cement Port Collar: w / sack of cement
Packer Type: Size: Inch Set at: Feet
Total Depth: Plug Back Depth: Plug Back Method:

Geological Data:

Table with 4 columns: Formation Name, Formation Top, Formation Base, Completion Information. Rows 1 and 2.

UNDER PENALTY OF PERJURY I HEREBY ATTEST THAT THE INFORMATION CONTAINED HEREIN IS TRUE AND CORRECT TO THE BEST OF MY KNOWLEDGE

Submitted Electronically

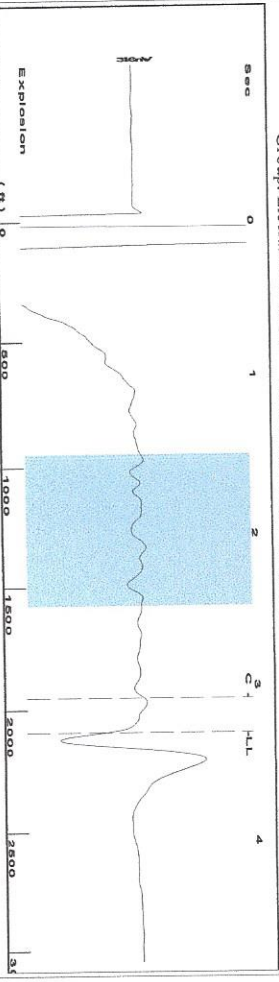
Do NOT Write in This Space - KCC USE ONLY
Date Tested: Results: Date Plugged: Date Repaired: Date Put Back in Service:
Review Completed by: Comments:
TA Approved: Yes Denied Date:

Mail to the Appropriate KCC Conservation Office:

Table with 2 columns: Office Address, Phone. Rows for District Office #1, #2, #3, #4.

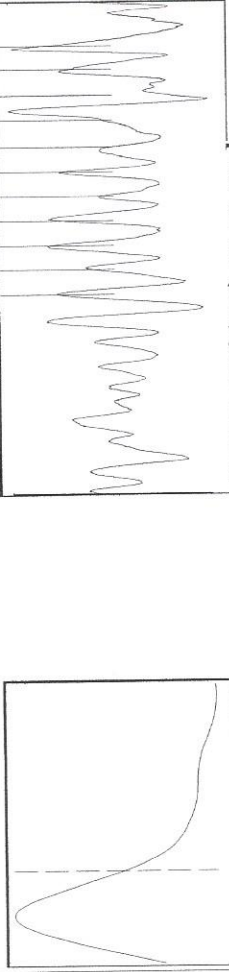
Shot @ 300' OH

Group: Liberal TAD Wells Well: Hoffman E-1 (acquired on: 04/25/18 15:21:02)



Filter Type High Pass Automatic Collar Count Yes  
 Manual Acoustic Velo 1235.87 ft/s Manual JTS/sec 19.4932  
 Time 3.296 sec  
 Joints 65.92 Jts  
 Depth 2089.66 ft

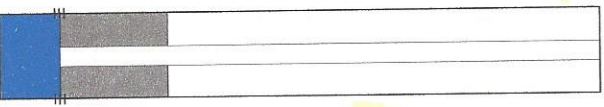
1.5 to 2.5 (Sec)



Analysis Method: Automatic

Group: Liberal TAD Wells Well: Hoffman E-1 (acquired on: 04/25/18 15:21:02)

Production Current	Potential	Casing Pressure	Static
Oil -*- BBL/D	-*- BBL/D	9.5 psi (g)	Oil Column Height
Water -*- BBL/D	-*- BBL/D	-0.046 psi	MD 0 ft
Gas -*- Mscf/D	-*- Mscf/D	2.00 min	Water Column Height
IPR Method	Vogel	Gas/Liquid Interface Pressure	MD 606 ft
PBHP/SBHP	-*-	10.8 psi (g)	Static BHP
Production Efficiency	0.0	Liquid Level Depth	286.5 psi (g)
Oil 40 deg API		2089.66 ft	
Water 1.05 Sp.Gr.H2O		Pump Intake Depth	
Gas 0.73 Sp.Gr.AIR		2696.00 ft	
Acoustic Velocity	1268 ft/s	Formation Depth	
		2696.00 ft	

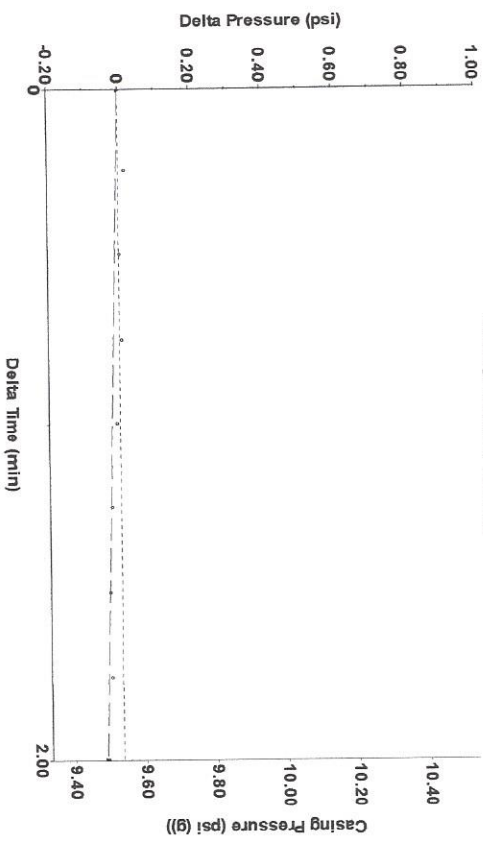


Acoustic Test

*Perfs*  
 2458-2628

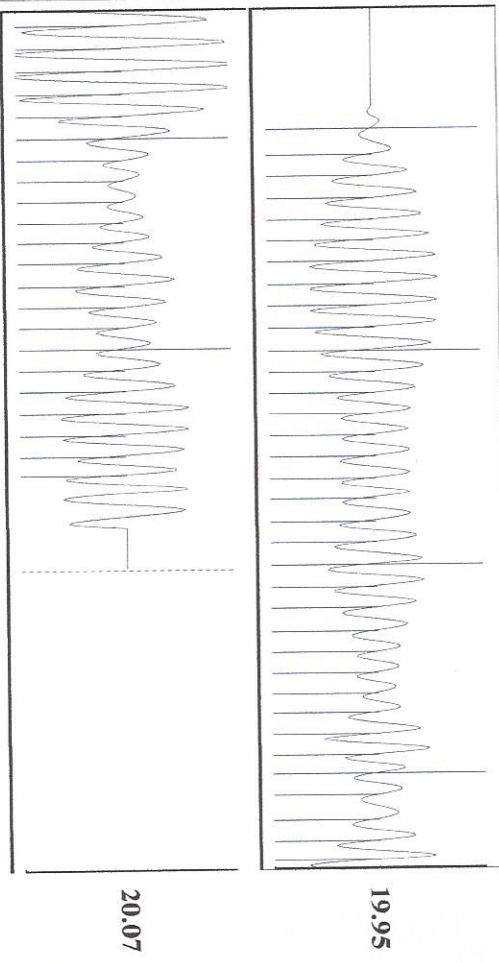
Group: Liberal TAD Wells Well: Hoffman E-1 (acquired on: 04/25/18 15:21:02)

Casing Pressure Buildup



Change in Pressure -0.05 psi PT11249  
 Change in Time 2.00 min Range  
 0-? psi

Group: Liberal TAD Wells Well: Hoffman E-1 (acquired on: 04/25/18 15:21:02)



Acoustic Velocity 1268 ft/s Joints counted 56  
 Joints Per Second 20 Jts/sec 65.92  
 Depth to Liquid Level 2089.66 ft Filter Width 17.4932  
 Automatic Collar Count Yes Time to 1st Collar 0.276 21.4932 3.076

20.07

19.95

# STATE OF KANSAS

CORPORATION COMMISSION  
CONSERVATION DIVISION  
DISTRICT No. 1  
210 E. FRONTVIEW, SUITE A  
DODGE CITY, KS 67801



PHONE: 620-682-7933  
<http://kcc.ks.gov/>

GOVERNOR JEFF COLYER, M.D.

SHARI FEIST ALBRECHT, CHAIR | JAY SCOTT EMLER, COMMISSIONER | DWIGHT D. KEEN, COMMISSIONER

May 15, 2018

Katherine McClurkan  
Merit Energy Company, LLC  
13727 Noel Road, Suite 1200  
Dallas, TX 75240

Re: Temporary Abandonment  
API 15-175-00296-00-01  
Hoffman E 1  
SE/4 Sec.12-32S-34W  
Seward County, Kansas

Dear Katherine McClurkan:

"Your temporary abandonment (TA) application for the well listed above has been approved. In accordance with K.A.R. 82-3-111 the TA status of this well will expire 05/15/2019.

- \* If you return this well to service or plug it, please notify the District Office.
- \* If you sell this well you are required to file a Transfer of Operator form, T-1.
- \* If the well will remain temporarily abandoned, you must submit a new TA application, CP-111, before 05/15/2019.

You may contact me at the number above if you have questions.

Very truly yours,

Michael Maier"