

KANSAS CORPORATION COMMISSION
OIL & GAS CONSERVATION DIVISION

TEMPORARY ABANDONMENT WELL APPLICATION

OPERATOR: License#
Name:
Address 1:
Address 2:
City: State: Zip:
Contact Person:
Phone:
Contact Person Email:
Field Contact Person:
Field Contact Person Phone:

API No. 15-
Spot Description:
Sec. Twp. S. R.
GPS Location: Lat: Long:
Datum: NAD27 NAD83 WGS84
County: Elevation:
Lease Name: Well #:
Well Type: Oil Gas OG WSW Other:
SWD Permit #: ENHR Permit #:
Gas Storage Permit #:
Spud Date: Date Shut-In:

Table with 7 columns: Conductor, Surface, Production, Intermediate, Liner, Tubing. Rows include Size, Setting Depth, Amount of Cement, Top of Cement, Bottom of Cement.

Casing Fluid Level from Surface: How Determined? Date:
Casing Squeeze(s): to w / sacks of cement, to w / sacks of cement. Date:
Do you have a valid Oil & Gas Lease? Yes No
Depth and Type: Junk in Hole at Tools in Hole at Casing Leaks: Yes No Depth of casing leak(s):
Type Completion: ALT. I ALT. II Depth of: DV Tool: w / sacks of cement Port Collar: w / sack of cement
Packer Type: Size: Inch Set at: Feet
Total Depth: Plug Back Depth: Plug Back Method:

Geological Data:

Table with 4 columns: Formation Name, Formation Top, Formation Base, Completion Information. Rows 1 and 2.

UNDER PENALTY OF PERJURY I HEREBY ATTEST THAT THE INFORMATION CONTAINED HEREIN IS TRUE AND CORRECT TO THE BEST OF MY KNOWLEDGE

Submitted Electronically

Do NOT Write in This Space - KCC USE ONLY
Date Tested: Results: Date Plugged: Date Repaired: Date Put Back in Service:
Review Completed by: Comments:
TA Approved: Yes Denied Date:

Mail to the Appropriate KCC Conservation Office:

Table with 3 columns: District Office, Address, Phone. Rows for District Office #1, #2, #3, #4.

General

Well ID 126337
 Well Jellison C 2-9
 Company Sandridge
 Operator - * -
 Lease Name Jellison C 2-9
 Elevation 0.00 ft
 Production Method Rod Pump
 Dataset Description

Comment

Surface Unit

Manufacturer - * -
 Unit Class Conventional
 Unit API Number - * -
 Measured Stroke Length - * - in
 Rotation CW
 Counter Balance Effect (Weights Level) - * - Klb
 Weight Of Counter Weights 2000 lb

Prime Mover

Motor Type Electric
 Rated HP - * - HP
 Run Time 24 hr/day
 MFG/Comment - * -

Electric Motor Parameters

Rated Full Load AMPS - * -
 Rated Full Load RPM - * -
 Synchronous RPM 1200
 Voltage - * -
 Hertz 60
 Phase 3
 Power Consumption 5
 Power Demand 8 \$/KW

Tubulars

Tubing OD - * - in
 Casing OD - * - in
 Average Joint Length 31.700 ft
 Anchor Depth - * - ft
 Kelly Bushing 0.00 ft

Pump

Plunger Diameter - * - in
 Pump Intake Depth - * - ft
 **Total Rod Length > Pump Depth

Polished Rod

Polished Rod Diameter - * - in

Rod String

	Top Taper	Taper 2	Taper 3	Taper 4	Taper 5	Taper 6
Rod Type	- * -	- * -	- * -	- * -	- * -	- * -
Rod Length	- * -	- * -	- * -	- * -	- * -	- * - ft
Rod Diameter	- * -	- * -	- * -	- * -	- * -	- * - in
Rod Weight	0.0	0.0	0.0	0.0	0.0	0.0 lb

Total Rod Length 0
 Total Rod Weight 0.00

Damp Up 0.05
 Damp Down 0.05

Conditions

Pressure

Static BHP - * - psi (g)
 Static BHP Method Acoustic
 Static BHP Date 05/08/2018

Producing BHP - * - psi (g)
 Producing BHP Method Acoustic
 Producing BHP Date 05/16/2017
 Formation Depth 5430.00 ft

Surface Producing Pressures

Tubing Pressure - * - psi (g)
 Casing Pressure 444.0 psi (g)

Casing Pressure Buildup

Change in Pressure 0.144 psi
 Over Change in Time 0.50 min

Production

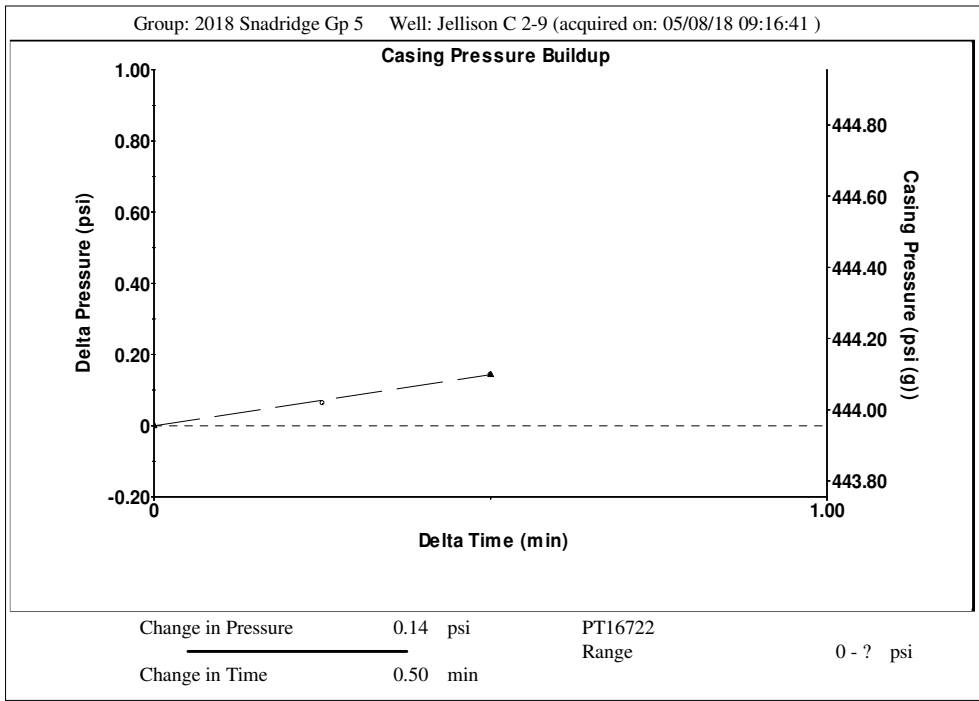
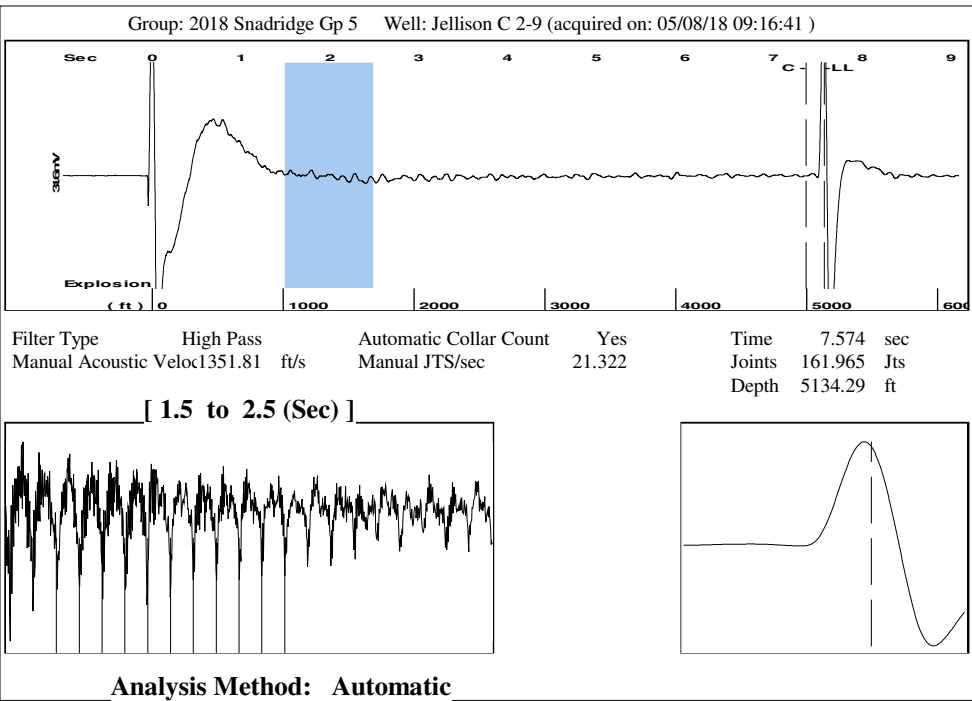
Oil Production 0 BBL/D
 Water Production 1 BBL/D
 Gas Production - * - Mscf/D
 Production Date 05/08/2017

Temperatures

Surface Temperature 70 deg F
 Bottomhole Temperature 150 deg F

Fluid Properties

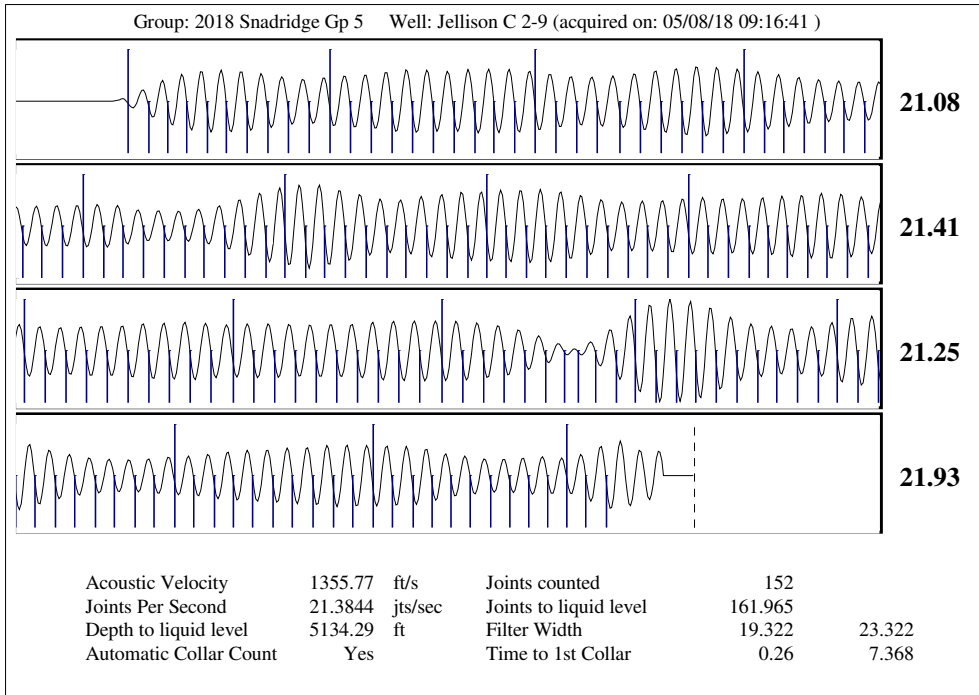
Oil API 40 deg.API
 Water Specific Gravity 1.05 Sp.Gr.H2O



Group: 2018 Snadridge Gp 5 Well: Jellison C 2-9 (acquired on: 05/08/18 09:16:41)

Production		Potential		Casing Pressure		Static	
Oil	0	- * -	BBL/D	444.0	psi (g)		
Water	1	- * -	BBL/D	Casing Pressure Buildup	0.144	psi	Oil Column Height
Gas	- * -	- * -	Mscf/D	0.50	min		MD 0 ft
IPR Method		Vogel		Gas/Liquid Interface Pressure		Water Column Height	
PBHP/SBHP		- * -		- * -		MD - * - ft	
Production Efficiency		0.0		Liquid Level Depth		Pump Intake Depth	
Oil	40 deg.API			5134.29 ft		- * - ft	
Water	1.05 Sp.Gr.H2O			Formation Depth		5430.00 ft	
Gas	0.63 Sp.Gr.AIR						
Acoustic Velocity		1355.77 ft/s		Static BHP		- * - psi (g)	

Jellison C 2-9



STATE OF KANSAS

CORPORATION COMMISSION
CONSERVATION DIVISION
DISTRICT No. 1
210 E. FRONTVIEW, SUITE A
DODGE CITY, KS 67801



PHONE: 620-682-7933
<http://kcc.ks.gov/>

GOVERNOR JEFF COLYER, M.D.

SHARI FEIST ALBRECHT, CHAIR | JAY SCOTT EMLER, COMMISSIONER | DWIGHT D. KEEN, COMMISSIONER

May 22, 2018

Laci Bevans
SandRidge Exploration and Production LLC
123 ROBERT S. KERR AVE
OKLAHOMA CITY, OK 73102-6406

Re: Temporary Abandonment
API 15-033-21460-00-00
JELLISON C 2-9
NE/4 Sec.09-33S-19W
Comanche County, Kansas

Dear Laci Bevans:

"Your temporary abandonment (TA) application for the well listed above has been approved. In accordance with K.A.R. 82-3-111 the TA status of this well will expire 05/22/2019.

- * If you return this well to service or plug it, please notify the District Office.
- * If you sell this well you are required to file a Transfer of Operator form, T-1.
- * If the well will remain temporarily abandoned, you must submit a new TA application, CP-111, before 05/22/2019.

You may contact me at the number above if you have questions.

Very truly yours,

Michael Maier"