

KANSAS CORPORATION COMMISSION
OIL & GAS CONSERVATION DIVISION

TEMPORARY ABANDONMENT WELL APPLICATION

OPERATOR: License#
Name:
Address 1:
Address 2:
City: State: Zip:
Contact Person:
Phone:
Contact Person Email:
Field Contact Person:
Field Contact Person Phone:

API No. 15-
Spot Description:
Sec. Twp. S. R.
GPS Location: Lat: Long:
Datum: NAD27 NAD83 WGS84
County: Elevation:
Lease Name: Well #:
Well Type: Oil Gas OG WSW Other:
SWD Permit #: ENHR Permit #:
Gas Storage Permit #:
Spud Date: Date Shut-In:

Table with 7 columns: Conductor, Surface, Production, Intermediate, Liner, Tubing. Rows include Size, Setting Depth, Amount of Cement, Top of Cement, Bottom of Cement.

Casing Fluid Level from Surface: How Determined? Date:
Casing Squeeze(s): to w / sacks of cement, to w / sacks of cement. Date:
Do you have a valid Oil & Gas Lease? Yes No
Depth and Type: Junk in Hole at Tools in Hole at Casing Leaks: Yes No Depth of casing leak(s):
Type Completion: ALT. I ALT. II Depth of: DV Tool: w / sacks of cement Port Collar: w / sack of cement
Packer Type: Size: Inch Set at: Feet
Total Depth: Plug Back Depth: Plug Back Method:

Geological Data:

Table with 4 columns: Formation Name, Formation Top, Formation Base, Completion Information. Rows 1 and 2.

UNDER PENALTY OF PERJURY I HEREBY ATTEST THAT THE INFORMATION CONTAINED HEREIN IS TRUE AND CORRECT TO THE BEST OF MY KNOWLEDGE

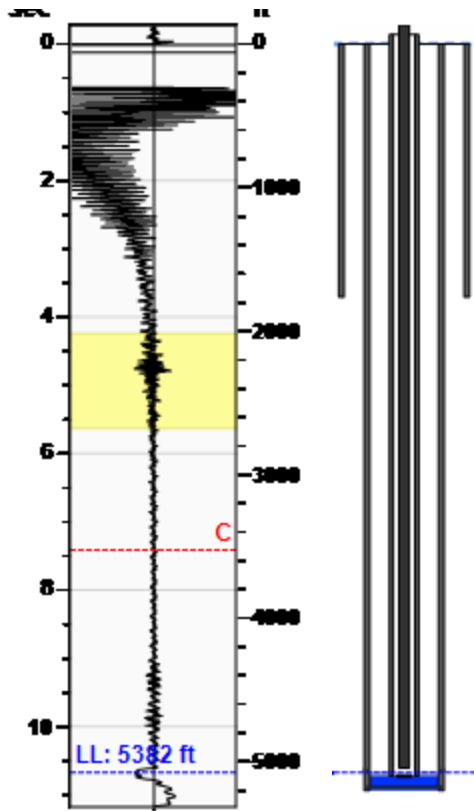
Submitted Electronically

Do NOT Write in This Space - KCC USE ONLY
Date Tested: Results: Date Plugged: Date Repaired: Date Put Back in Service:
Review Completed by: Comments:
TA Approved: Yes Denied Date:

Mail to the Appropriate KCC Conservation Office:

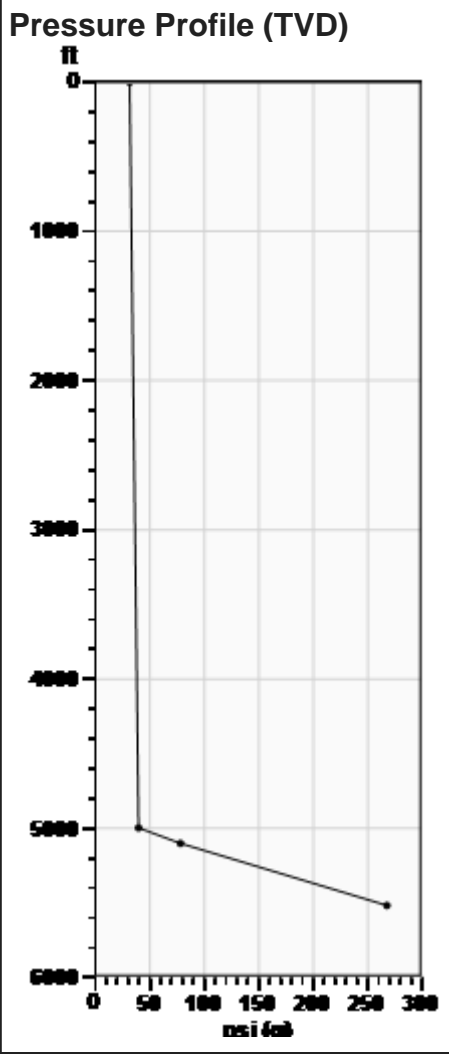
Table with 3 columns: District Office #, Address, Phone. Rows 1-4.

Producing Shot
05/27/2017 02:29:08PM

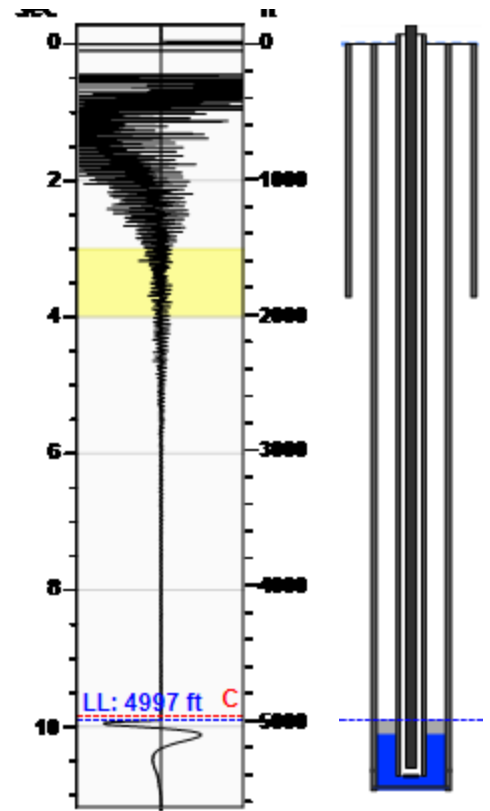


Static Bottomhole Pressure
208.8 psi (g) @ 5388 ft

Static Liquid Level 4997 ft
Oil Column Height 104 ft
Water Column Height 287 ft



Static Shot
07/15/2017 11:07:34AM



Casing Pressure Buildup

Casing Pressure Buildup graph for Static Shot. The vertical axis is pressure in psi (31 to 34) and the horizontal axis is Delta Time in minutes (0 to 0.25). The pressure starts at 31.5 psi at 0 minutes and remains constant.

Casing Pressure	31.5 psi (g)
Buildup	0.0 psi (g)
Buildup Time	15 sec
Gas Gravity	0.9716 Air = 1

Casing Pressure
Pressure 31.5 psi (g)

Annular Gas Flow
Gas Flow 4.4 Mscf/D

Casing Pressure Buildup

Casing Pressure Buildup graph for Producing Shot. The vertical axis is pressure in psi (26 to 29) and the horizontal axis is Delta Time in minutes (-0.01 to 0.01). The pressure is constant at 26.3 psi.

Casing Pressure	26.3 psi (g)
Buildup	0.0 psi (g)
Buildup Time	0 sec
Gas Gravity	0.9834 Air = 1

Casing Pressure
Pressure 26.3 psi (g)

Annular Gas Flow
Gas Flow 0.0 Mscf/D

Fluid Properties
Gas Free Above Pump 27 ft
% Liquid Above Pump 100.00%
% Liquid Below Pump **

Well Test, 05/27/2017
Oil 1 BBL/D
Water 3 BBL/D

Comments and Recommendations
Acoustic Test

STATE OF KANSAS

CORPORATION COMMISSION
CONSERVATION DIVISION
DISTRICT No. 1
210 E. FRONTVIEW, SUITE A
DODGE CITY, KS 67801



PHONE: 620-682-7933
<http://kcc.ks.gov/>

GOVERNOR JEFF COLYER, M.D.

SHARI FEIST ALBRECHT, CHAIR | JAY SCOTT EMLER, COMMISSIONER | DWIGHT D. KEEN, COMMISSIONER

May 22, 2018

CYNDE WOLF
Falcon Exploration, Inc.
125 N MARKET STE 1252
WICHITA, KS 67202-1719

Re: Temporary Abandonment
API 15-069-20418-00-00
JANTZ 2-30(SW)
SW/4 Sec.30-28S-30W
Gray County, Kansas

Dear CYNDE WOLF:

"Your temporary abandonment (TA) application for the well listed above has been approved. In accordance with K.A.R. 82-3-111 the TA status of this well will expire 05/22/2019.

- * If you return this well to service or plug it, please notify the District Office.
- * If you sell this well you are required to file a Transfer of Operator form, T-1.
- * If the well will remain temporarily abandoned, you must submit a new TA application, CP-111, before 05/22/2019.

You may contact me at the number above if you have questions.

Very truly yours,

Michael Maier"