

KANSAS CORPORATION COMMISSION
OIL & GAS CONSERVATION DIVISION

TEMPORARY ABANDONMENT WELL APPLICATION

OPERATOR: License#
Name:
Address 1:
Address 2:
City: State: Zip:
Contact Person:
Phone:
Contact Person Email:
Field Contact Person:
Field Contact Person Phone:

API No. 15-
Spot Description:
Sec. Twp. S. R.
GPS Location: Lat: Long:
Datum: NAD27 NAD83 WGS84
County: Elevation:
Lease Name: Well #:
Well Type: Oil Gas OG WSW Other:
SWD Permit #: ENHR Permit #:
Gas Storage Permit #:
Spud Date: Date Shut-In:

Table with 7 columns: Conductor, Surface, Production, Intermediate, Liner, Tubing. Rows include Size, Setting Depth, Amount of Cement, Top of Cement, Bottom of Cement.

Casing Fluid Level from Surface: How Determined? Date:
Casing Squeeze(s): to w / sacks of cement, to w / sacks of cement. Date:
Do you have a valid Oil & Gas Lease? Yes No
Depth and Type: Junk in Hole at Tools in Hole at Casing Leaks: Yes No Depth of casing leak(s):
Type Completion: ALT. I ALT. II Depth of: DV Tool: w / sacks of cement Port Collar: w / sack of cement
Packer Type: Size: Inch Set at: Feet
Total Depth: Plug Back Depth: Plug Back Method:

Geological Data:

Table with 4 columns: Formation Name, Formation Top, Formation Base, Completion Information. Rows 1 and 2.

UNDER PENALTY OF PERJURY I HEREBY ATTEST THAT THE INFORMATION CONTAINED HEREIN IS TRUE AND CORRECT TO THE BEST OF MY KNOWLEDGE

Submitted Electronically

Do NOT Write in This Space - KCC USE ONLY
Date Tested: Results: Date Plugged: Date Repaired: Date Put Back in Service:
Review Completed by: Comments:
TA Approved: Yes Denied Date:

Mail to the Appropriate KCC Conservation Office:

Map of Kansas with 4 numbered districts. Table with 2 columns: Office Address, Phone Number. Rows 1-4.

05/03/2018

10:03:38

WELL Erick Unit 12-4
 CASING PRESSURE.....
 ΔP
 ΔT
 PRODUCTION RATE.....

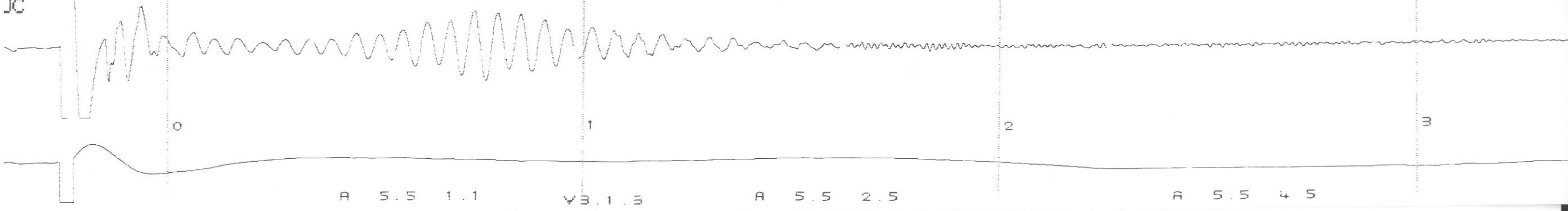
JOINTS TO LIQUID.....
 DISTANCE TO LIQUID...3.100.....
 FBHP
 SBHP
 PROD RATE EFF, %
 MAX PRODUCTION

UPPER COLLARS A: 6.1
 P-P 1.14 mV

LIQUID LEVEL A: 5.5
 P-P 0.250 mV

GENER
 PULS
 11.8
 VOLT

JC



3

4

5

6

A 5.5 5.5

A 5.5 5.5

A 5.5 5.5

A 5.5 5.5

7

8

9

Handwritten notes:
11/10/20
11/10/20
11/10/20

5.5

A 5.5 5.5

A 5.5 5.5

A 5.5 5.5

STATE OF KANSAS

CORPORATION COMMISSION
CONSERVATION DIVISION
DISTRICT OFFICE No. 4
2301 E. 13TH STREET
HAYS, KS 67601-2651



PHONE: 785-261-6250
FAX: 785-625-0564
<http://kcc.ks.gov/>

GOVERNOR JEFF COLYER, M.D.

SHARI FEIST ALBRECHT, CHAIR | JAY SCOTT EMLER, COMMISSIONER | DWIGHT D. KEEN, COMMISSIONER

June 01, 2018

Sara Guthrie
Citation Oil & Gas Corp.
14077 CUTTEN RD
PO BOX 690688
HOUSTON, TX 77269-0688

Re: Temporary Abandonment
API 15-065-03112-00-00
ELRICK UNIT 12-4
NE/4 Sec.10-10S-25W
Graham County, Kansas

Dear Sara Guthrie:

"Your temporary abandonment (TA) application for the well listed above has been approved. In accordance with K.A.R. 82-3-111 the TA status of this well will expire 06/01/2019.

- * If you return this well to service or plug it, please notify the District Office.
- * If you sell this well you are required to file a Transfer of Operator form, T-1.
- * If the well will remain temporarily abandoned, you must submit a new TA application, CP-111, before 06/01/2019.

You may contact me at the number above if you have questions.

Very truly yours,

RICHARD WILLIAMS"