

KANSAS CORPORATION COMMISSION
OIL & GAS CONSERVATION DIVISION

TEMPORARY ABANDONMENT WELL APPLICATION

OPERATOR: License#
Name:
Address 1:
Address 2:
City: State: Zip:
Contact Person:
Phone:
Contact Person Email:
Field Contact Person:
Field Contact Person Phone:

API No. 15-
Spot Description:
Sec. Twp. S. R.
GPS Location: Lat: Long:
Datum: NAD27 NAD83 WGS84
County: Elevation:
Lease Name: Well #:
Well Type: Oil Gas OG WSW Other:
SWD Permit #: ENHR Permit #:
Gas Storage Permit #:
Spud Date: Date Shut-In:

Table with 7 columns: Conductor, Surface, Production, Intermediate, Liner, Tubing. Rows include Size, Setting Depth, Amount of Cement, Top of Cement, Bottom of Cement.

Casing Fluid Level from Surface: How Determined? Date:
Casing Squeeze(s): to w / sacks of cement, to w / sacks of cement. Date:
Do you have a valid Oil & Gas Lease? Yes No
Depth and Type: Junk in Hole at Tools in Hole at Casing Leaks: Yes No Depth of casing leak(s):
Type Completion: ALT. I ALT. II Depth of: DV Tool: w / sacks of cement Port Collar: w / sack of cement
Packer Type: Size: Inch Set at: Feet
Total Depth: Plug Back Depth: Plug Back Method:

Geological Data:

Table with 4 columns: Formation Name, Formation Top, Formation Base, Completion Information. Rows 1 and 2.

UNDER PENALTY OF PERJURY I HEREBY ATTEST THAT THE INFORMATION CONTAINED HEREIN IS TRUE AND CORRECT TO THE BEST OF MY KNOWLEDGE

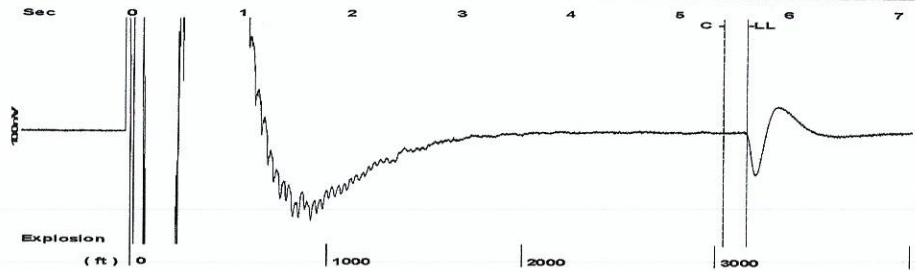
Submitted Electronically

Do NOT Write in This Space - KCC USE ONLY
Date Tested: Results: Date Plugged: Date Repaired: Date Put Back in Service:
Review Completed by: Comments:
TA Approved: Yes Denied Date:

Mail to the Appropriate KCC Conservation Office:

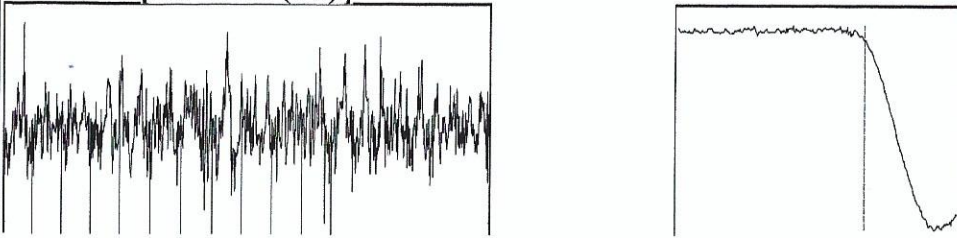
Table with 2 columns: Office Address, Phone. Rows for District Office #1, #2, #3, #4.

Group: Belpre Well: Deckert 3-5 (acquired on: 06/05/18 13:26:09)



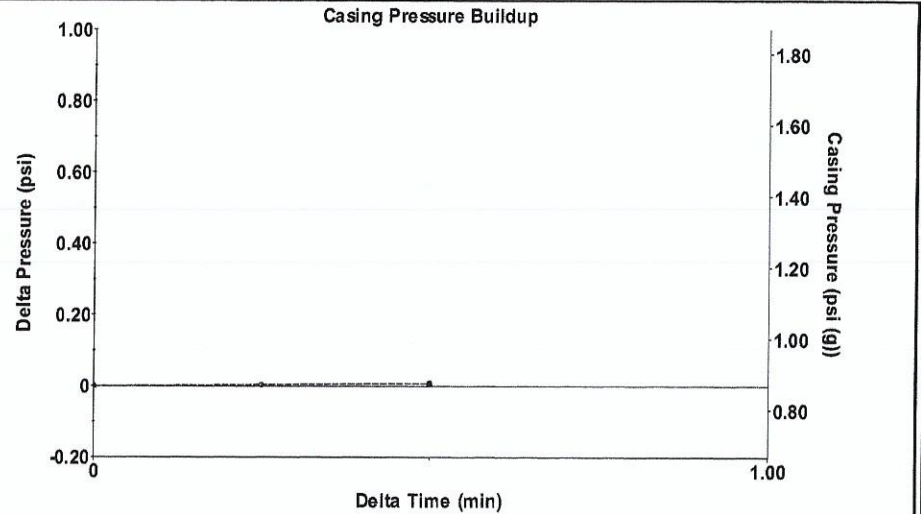
Filter Type High Pass Automatic Collar Count Yes Time 5.632 sec
 Manual Acoustic Veloc 1030.89 ft/s Manual JTS/sec 16.2602 Joints 99.7882 Jts
 Depth 3163.28 ft

[4.0 to 5.0 (Sec)]



Analysis Method: Automatic

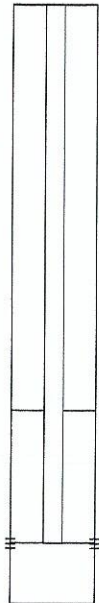
Group: Belpre Well: Deckert 3-5 (acquired on: 06/05/18 13:26:09)



Change in Pressure 0.01 psi PT13440
 Range 0 - ? psi
 Change in Time 0.50 min

Group: Belpre Well: Deckert 3-5 (acquired on: 06/05/18 13:26:09)

Production	Potential	Casing Pressure
Current	- * - BBL/D	0.9 psi (g)
Oil - * -	- * - BBL/D	Casing Pressure Buildup
Water - * -	- * - Mscf/D	0.008 psi
Gas - * -		0.50 min
IPR Method	Vogel	Gas/Liquid Interface Pressure
PBHP/SBHP	- * -	2.1 psi (g)
Production Efficiency	0.0	
Oil 40 deg.API		Liquid Level Depth
Water 1.05 Sp.Gr.H2O		3163.28 ft
Gas 0.86 Sp.Gr.AIR		Pump Intake Depth
		4380.00 ft
Acoustic Velocity	1123.33 ft/s	Formation Depth
		4384.00 ft



Producing

Annular Gas Flow 0 Mscf/D

% Liquid 100 %

Pump Intake 412.7 psi (g)

Producing BHP 414.5 psi (g)

Static BHP 372.8 psi (g)

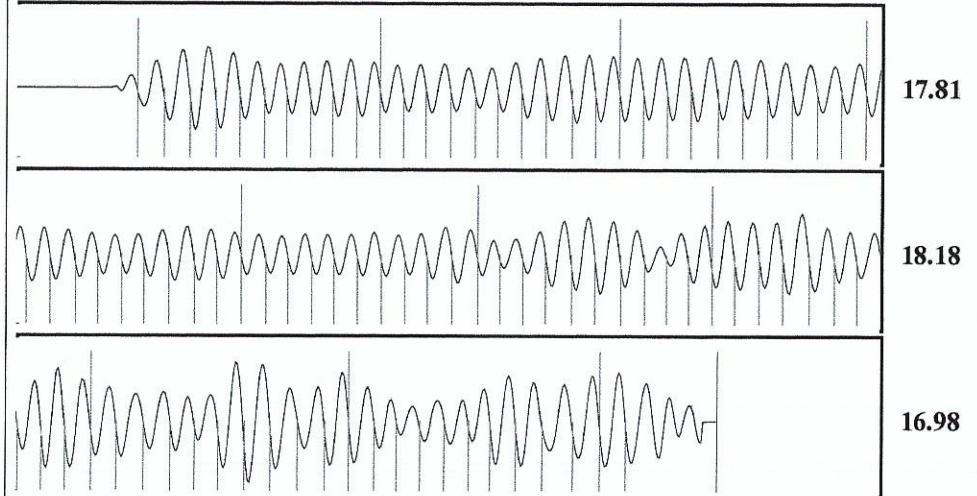
Formation Submergence

Total Gaseous Liquid Column HT (TVD) 1217 ft

Equivalent Gas Free Liquid HT (TVD) 1217 ft

Acoustic Test

Group: Belpre Well: Deckert 3-5 (acquired on: 06/05/18 13:26:09)



Acoustic Velocity 1123.33 ft/s Joints counted 91

Joints Per Second 17.7181 jts/sec Joints to liquid level 99.7882

Depth to liquid level 3163.28 ft Filter Width 14.2602 18.2602

Automatic Collar Count Yes Time to 1st Collar 0.284 5.42

STATE OF KANSAS

CORPORATION COMMISSION
CONSERVATION DIVISION
DISTRICT No. 1
210 E. FRONTVIEW, SUITE A
DODGE CITY, KS 67801



PHONE: 620-682-7933
<http://kcc.ks.gov/>

GOVERNOR JEFF COLYER, M.D.

SHARI FEIST ALBRECHT, CHAIR | JAY SCOTT EMLER, COMMISSIONER | DWIGHT D. KEEN, COMMISSIONER

June 12, 2018

Margery L. Nagel
F. G. Holl Company L.L.C.
9431 E CENTRAL STE 100
WICHITA, KS 67206-2563

Re: Temporary Abandonment
API 15-047-21302-00-00
DECKERT 3-5
NE/4 Sec.05-24S-17W
Edwards County, Kansas

Dear Margery L. Nagel:

"Your temporary abandonment (TA) application for the well listed above has been approved. In accordance with K.A.R. 82-3-111 the TA status of this well will expire 06/12/2019.

- * If you return this well to service or plug it, please notify the District Office.
- * If you sell this well you are required to file a Transfer of Operator form, T-1.
- * If the well will remain temporarily abandoned, you must submit a new TA application, CP-111, before 06/12/2019.

You may contact me at the number above if you have questions.

Very truly yours,

Michael Maier"