

KANSAS CORPORATION COMMISSION
OIL & GAS CONSERVATION DIVISION

TEMPORARY ABANDONMENT WELL APPLICATION

OPERATOR: License#
Name:
Address 1:
Address 2:
City: State: Zip:
Contact Person:
Phone:
Contact Person Email:
Field Contact Person:
Field Contact Person Phone:

API No. 15-
Spot Description:
Sec. Twp. S. R.
feet from N / S Line of Section
feet from E / W Line of Section
GPS Location: Lat: , Long:
Datum: NAD27 NAD83 WGS84
County: Elevation: GL KB
Lease Name: Well #:
Well Type: Oil Gas OG WSW Other:
SWD Permit #: ENHR Permit #:
Gas Storage Permit #:
Spud Date: Date Shut-In:

Table with 7 columns: Conductor, Surface, Production, Intermediate, Liner, Tubing. Rows include Size, Setting Depth, Amount of Cement, Top of Cement, Bottom of Cement.

Casing Fluid Level from Surface: How Determined? Date:
Casing Squeeze(s): to w / sacks of cement, to w / sacks of cement. Date:
Do you have a valid Oil & Gas Lease? Yes No
Depth and Type: Junk in Hole at Tools in Hole at Casing Leaks: Yes No Depth of casing leak(s):
Type Completion: ALT. I ALT. II Depth of: DV Tool: w / sacks of cement Port Collar: w / sack of cement
Packer Type: Size: Inch Set at: Feet
Total Depth: Plug Back Depth: Plug Back Method:

Geological Date:

Table with 4 columns: Formation Name, Formation Top, Formation Base, Completion Information. Rows 1 and 2.

UNDER PENALTY OF PERJURY I HEREBY ATTEST THAT THE INFORMATION CONTAINED HEREIN IS TRUE AND CORRECT TO THE BEST OF MY KNOWLEDGE

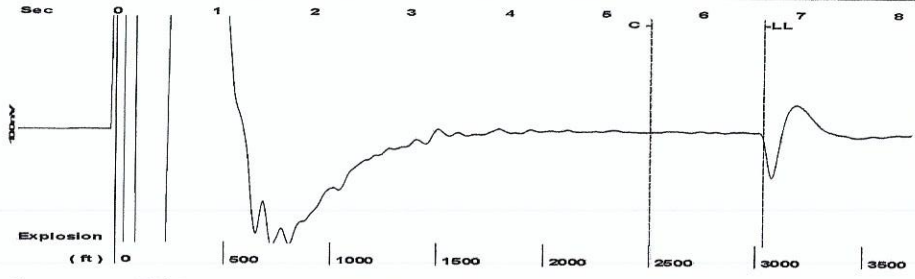
Submitted Electronically

Form with fields: Do NOT Write in This Space - KCC USE ONLY, Date Tested, Results, Date Plugged, Date Repaired, Date Put Back in Service, Review Completed by, Comments, TA Approved: Yes Denied, Date.

Mail to the Appropriate KCC Conservation Office:

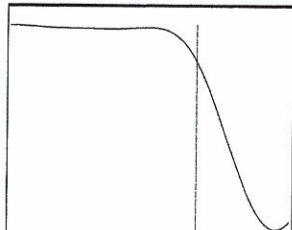
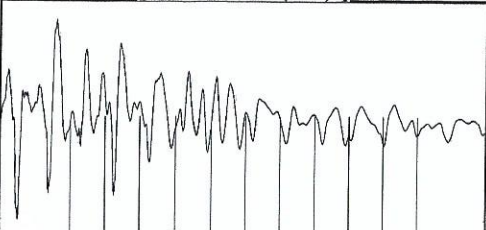
Table with 2 columns: Office Address, Phone. Rows for KCC District Office #1, #2, #3, #4.

Group: Radium Well: Krampe # 1-15 (acquired on: 06/05/18 11:51:43)



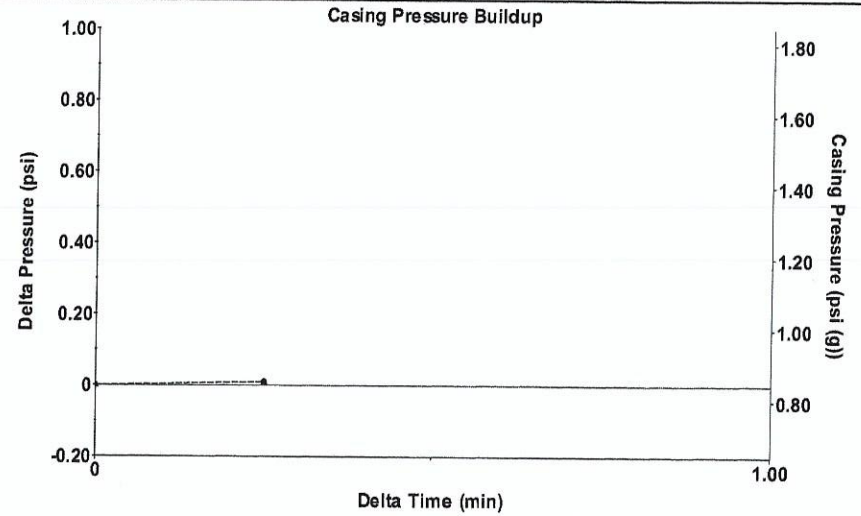
Filter Type High Pass Automatic Collar Count Yes Time 6.641 sec
 Manual Acoustic Veloc 880.056 ft/s Manual JTS/sec 14.0449 Joints 96.9117 Jts
 Depth 3036.24 ft

[0.5 to 1.5 (Sec)]



Analysis Method: Automatic

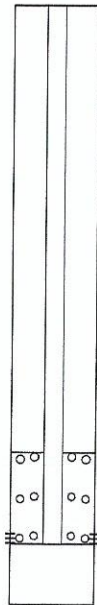
Group: Radium Well: Krampe # 1-15 (acquired on: 06/05/18 11:51:43)



Change in Pressure 0.01 psi PT13440
 Change in Time 0.25 min Range 0 - ? psi

Group: Radium Well: Krampe # 1-15 (acquired on: 06/05/18 11:51:43)

Production	Potential	Casing Pressure
Current		0.8 psi (g)
Oil -*- BBL/D	-*- BBL/D	Casing Pressure Buildup
Water -*- BBL/D	-*- BBL/D	0.010 psi
Gas -*- Mscf/D	-*- Mscf/D	0.25 min
IPR Method	Vogel	Gas/Liquid Interface Pressure
PBHP/SBHP	-*-	2.6 psi (g)
Production Efficiency	0.0	Liquid Level Depth
Oil 40 deg.API		3036.24 ft
Water 1.05 Sp.Gr.H2O		Pump Intake Depth
Gas 1.06 Sp.Gr.AIR		3760.00 ft
Acoustic Velocity	914.393 ft/s	Formation Depth
		3713.00 ft



Producing

Annular Gas Flow 1 Mscf/D

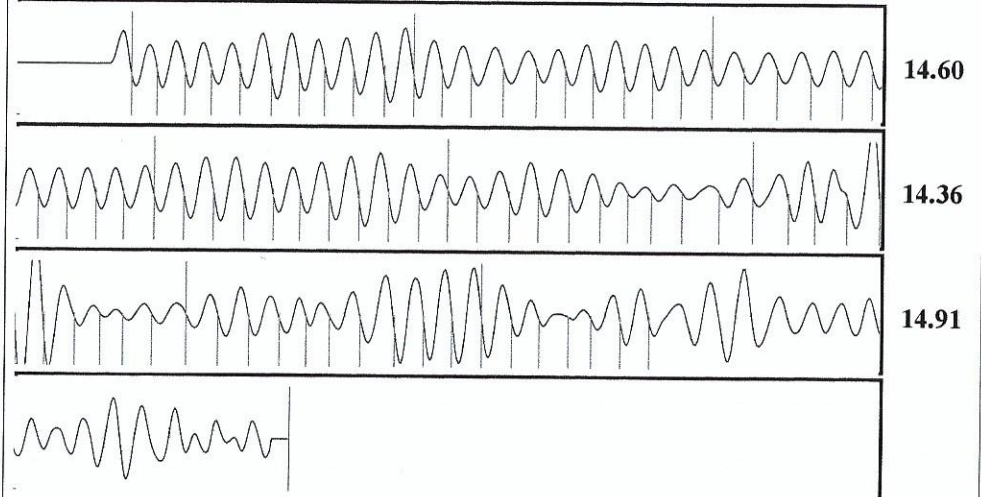
% Liquid 96 %

Pump Intake 239.4 psi (g)

Producing BHP 223.6 psi (g)

Static BHP -*- psi (g)

Group: Radium Well: Krampe # 1-15 (acquired on: 06/05/18 11:51:43)



Acoustic Velocity	914.393 ft/s	Joints counted	76
Joints Per Second	14.5929 jts/sec	Joints to liquid level	96.9117
Depth to liquid level	3036.24 ft	Filter Width	12.0449
Automatic Collar Count	Yes	Time to 1st Collar	0.268

STATE OF KANSAS

CORPORATION COMMISSION
CONSERVATION DIVISION
DISTRICT No. 1
210 E. FRONTVIEW, SUITE A
DODGE CITY, KS 67801



PHONE: 620-682-7933
<http://kcc.ks.gov/>

GOVERNOR JEFF COLYER, M.D.

SHARI FEIST ALBRECHT, CHAIR | JAY SCOTT EMLER, COMMISSIONER | DWIGHT D. KEEN, COMMISSIONER

June 12, 2018

Margery L. Nagel
F. G. Holl Company L.L.C.
9431 E CENTRAL STE 100
WICHITA, KS 67206-2563

Re: Temporary Abandonment
API 15-185-23160-00-02
KRAMPE OWWO 1-15
SW/4 Sec.15-21S-14W
Stafford County, Kansas

Dear Margery L. Nagel:

"Your temporary abandonment (TA) application for the well listed above has been approved. In accordance with K.A.R. 82-3-111 the TA status of this well will expire 06/12/2019.

- * If you return this well to service or plug it, please notify the District Office.
- * If you sell this well you are required to file a Transfer of Operator form, T-1.
- * If the well will remain temporarily abandoned, you must submit a new TA application, CP-111, before 06/12/2019.

You may contact me at the number above if you have questions.

Very truly yours,

Michael Maier"