

Marc A. Downing		Geologic Report	
Consulting Petroleum Geologist		Drilling Time and Sample Log	
Operator Downing-Nelson Oil Co., Inc.		Elevation	
Lease Muhlheim B No. 11		KB 2237	
API # 15-195-23037-0000		DF 2235	
Field Muhlheim		GL 2229	
Location 2345' FSL & 1160' FEL		Casing Record Surface 8 5/8" @ 222'	
Sec. 15 Twp. 13s Rge. 21w		Production 5 1/2" @ 4020'	
County Trego State Kansas		Electrical Surveys CNDL, DIL, MEL	
Formation	Sample tops	Log Tops	Datum Struct Comp
Top Anhydrite	1594	1605	+632 -7
Base Anhydrite	1641	1650	+587 NA
Topeka	3263	3265	-1028 FL
Heebner	3490	3491	-1254 +1
Toronto	3510	3512	-1275 -2
LKC	3525	3526	-1289 +2
BKC	3767	3768	-1531 +3
Marmaton	3842	3844	-1607 +2
Arbuckle	3912	3914	-1677 +12
Total Depth	4020	4021	-1784
Reference Well For Structural Comparison Chester Williams Muhlheim #1 C-NE-SE Sec. 15-13s-21w			

Drilling Contractor		Discovery Drilling, Rig #2	
Commenced 2-3-18		Completed 2-9-18	
Samples Saved From 3200		To RTD	
Drilling Time Kept From 3100		To RTD	
Samples Examined From 3200		To RTD	
Geological Supervision From 3200		To RTD	

Summary and Recommendations

Due to structural position, DST recovery, and log evaluation, it was decided to set 5 1/2" production casing for completion.

Respectfully Submitted,

Marc A. Downing

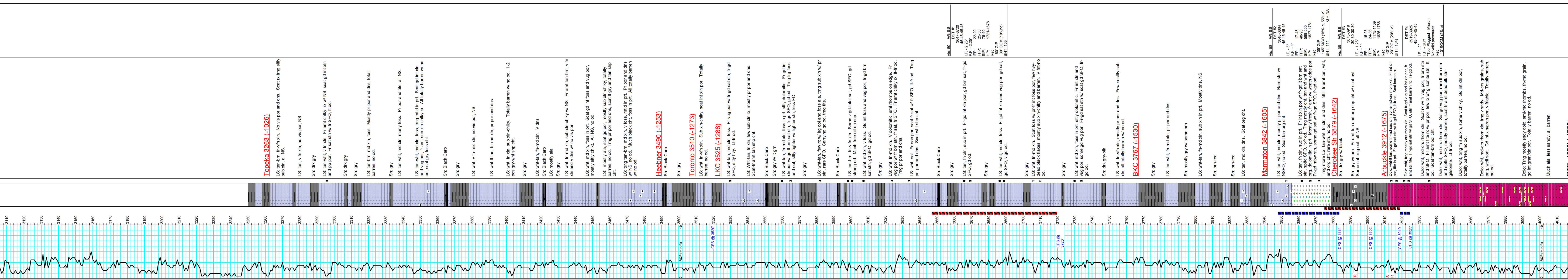
ROCK TYPES
 Carbon Sh
 Unst fwt/ shale, gry

ACCESSORIES
 Chert, dark
 Dolomite
 Sandstone
 carb shale

STRINGER
 Sandstone
 carb shale

OIL SHOWS
 Even Sh
 Spotted Sh 50-75%
 Spotted Sh 25-50%
 Spotted Sh 25-50%
 Questionable Sh
 Dead Oil Sh
 Fluorescence

DST
 DST Int
 DST alt
 Core
 Tan Pipe



Printed by GEOSTrip VC Striplog version 4.0.8.15 (www.drsl.ca)