



DRILL STEM TEST REPORT

Prepared For: **Downing-Nelson Oil Co., Inc.**

PO Box 1019
Hays, KS 67601

ATTN: Marc Downing

La-Se-Ba Unit #1-4

4-13S-21W Trego, KS

Start Date: 2018.03.26 @ 22:55:08

End Date: 2018.03.27 @ 05:17:59

Job Ticket #: 63417 DST #: 1

Trilobite Testing, Inc
1515 Commerce Parkway Hays, KS 67601
ph: 785-625-4778 fax: 785-625-5620

Printed: 2018.03.29 @ 08:53:26



TRILOBITE TESTING, INC.

DRILL STEM TEST REPORT

Dow ning-Nelson Oil Co., Inc.

4-13S-21W Trego, KS

PO Box 1019
Hays, KS 67601

La-Se-Ba Unit #1-4

Job Ticket: 63417

DST#: 1

ATTN: Marc Dow ning

Test Start: 2018.03.26 @ 22:55:08

GENERAL INFORMATION:

Formation: **LKC "E"**

Deviated: No Whipstock: ft (KB)

Time Tool Opened: 01:47:44

Time Test Ended: 05:17:59

Test Type: Conventional Bottom Hole (Initial)

Tester: Brannan Lonsdale

Unit No: 73

Interval: 3586.00 ft (KB) To 3600.00 ft (KB) (TVD)

Reference Elevations: 2222.00 ft (KB)

Total Depth: 3600.00 ft (KB) (TVD)

2214.00 ft (CF)

Hole Diameter: 7.88 inches Hole Condition: Fair

KB to GR/CF: 8.00 ft

Serial #: 8524 Outside

Press@RunDepth: 48.87 psig @ 3587.00 ft (KB)

Capacity: 8000.00 psig

Start Date: 2018.03.26

End Date:

2018.03.27

Last Calib.:

2018.03.27

Start Time: 22:55:09

End Time:

05:17:59

Time On Btm:

2018.03.27 @ 01:47:29

Time Off Btm:

2018.03.27 @ 03:48:44

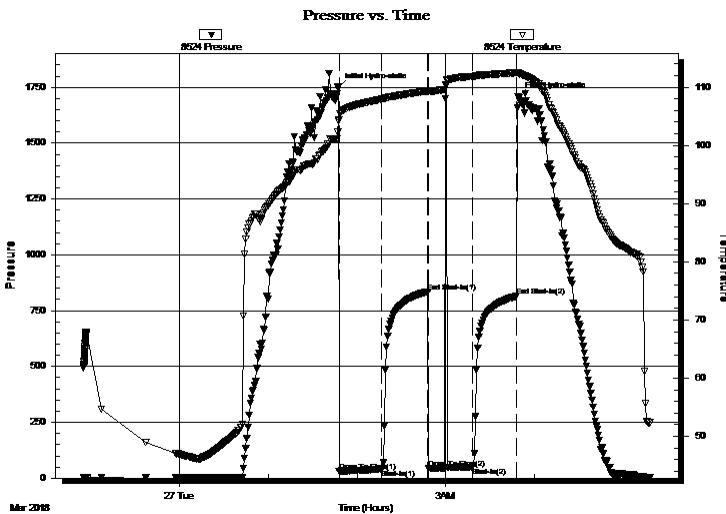
TEST COMMENT: 30- IF- Weak blow .5"

30- IS- No blow

30- FF- Very weak surface blow . Flushed tool. Weak surface blow died 2mins

30- FSI- No blow

PRESSURE SUMMARY



Time (Min.)	Pressure (psig)	Temp (deg F)	Annotation
0	1749.19	104.30	Initial Hydro-static
1	31.25	104.42	Open To Flow (1)
30	40.31	107.92	Shut-In(1)
61	835.10	109.35	End Shut-In(1)
61	43.00	109.21	Open To Flow (2)
91	48.87	111.84	Shut-In(2)
121	814.63	112.48	End Shut-In(2)
122	1707.86	112.43	Final Hydro-static

Recovery

Length (ft)	Description	Volume (bbl)
40.00	M	0.27

Gas Rates

Choke (inches)	Pressure (psig)	Gas Rate (Mcf/d)



**TRILOBITE
TESTING, INC.**

DRILL STEM TEST REPORT

TOOL DIAGRAM

Dow ning-Nelson Oil Co., Inc.

4-13S-21W Trego, KS

PO Box 1019
Hays, KS 67601

La-Se-Ba Unit #1-4

Job Ticket: 63417

DST#: 1

ATTN: Marc Dow ning

Test Start: 2018.03.26 @ 22:55:08

Tool Information

Drill Pipe:	Length: 3550.00 ft	Diameter: 3.82 inches	Volume: 50.32 bbl	Tool Weight: 2000.00 lb
Heavy Wt. Pipe:	Length: ft	Diameter: inches	Volume: - bbl	Weight set on Packer: 25000.00 lb
Drill Collar:	Length: 32.00 ft	Diameter: 2.25 inches	Volume: 0.16 bbl	Weight to Pull Loose: 66000.00 lb
			<u>Total Volume: - bbl</u>	Tool Chased 0.00 ft
Drill Pipe Above KB:	16.00 ft			String Weight: Initial 55000.00 lb
Depth to Top Packer:	3586.00 ft			Final 56000.00 lb
Depth to Bottom Packer:	ft			
Interval betw een Packers:	14.00 ft			
Tool Length:	34.00 ft			
Number of Packers:	2	Diameter: 6.75 inches		

Tool Comments:

Tool Description

Tool Description	Length (ft)	Serial No.	Position	Depth (ft)	Accum. Lengths
Change Over Sub	1.00			3567.00	
Shut In Tool	5.00			3572.00	
Hydraulic tool	5.00			3577.00	
Packer	5.00			3582.00	20.00 Bottom Of Top Packer
Packer	4.00			3586.00	
Stubb	1.00			3587.00	
Recorder	0.00	6771	Inside	3587.00	
Recorder	0.00	8524	Outside	3587.00	
Perforations	10.00			3597.00	
Bullnose	3.00			3600.00	14.00 Bottom Packers & Anchor
Total Tool Length:	34.00				



**TRILOBITE
TESTING, INC.**

DRILL STEM TEST REPORT

FLUID SUMMARY

Dow ning-Nelson Oil Co., Inc.

4-13S-21W Trego, KS

PO Box 1019
Hays, KS 67601

La-Se-Ba Unit #1-4

Job Ticket: 63417

DST#: 1

ATTN: Marc Dow ning

Test Start: 2018.03.26 @ 22:55:08

Mud and Cushion Information

Mud Type: Gel Chem

Cushion Type:

Oil API:

deg API

Mud Weight: 9.00 lb/gal

Cushion Length:

ft

Water Salinity:

ppm

Viscosity: 60.00 sec/qt

Cushion Volume:

bbbl

Water Loss: 7.59 in³

Gas Cushion Type:

Resistivity: ohm.m

Gas Cushion Pressure:

psig

Salinity: 2000.00 ppm

Filter Cake: inches

Recovery Information

Recovery Table

Length ft	Description	Volume bbbl
40.00	M	0.271

Total Length: 40.00 ft

Total Volume: 0.271 bbl

Num Fluid Samples: 0

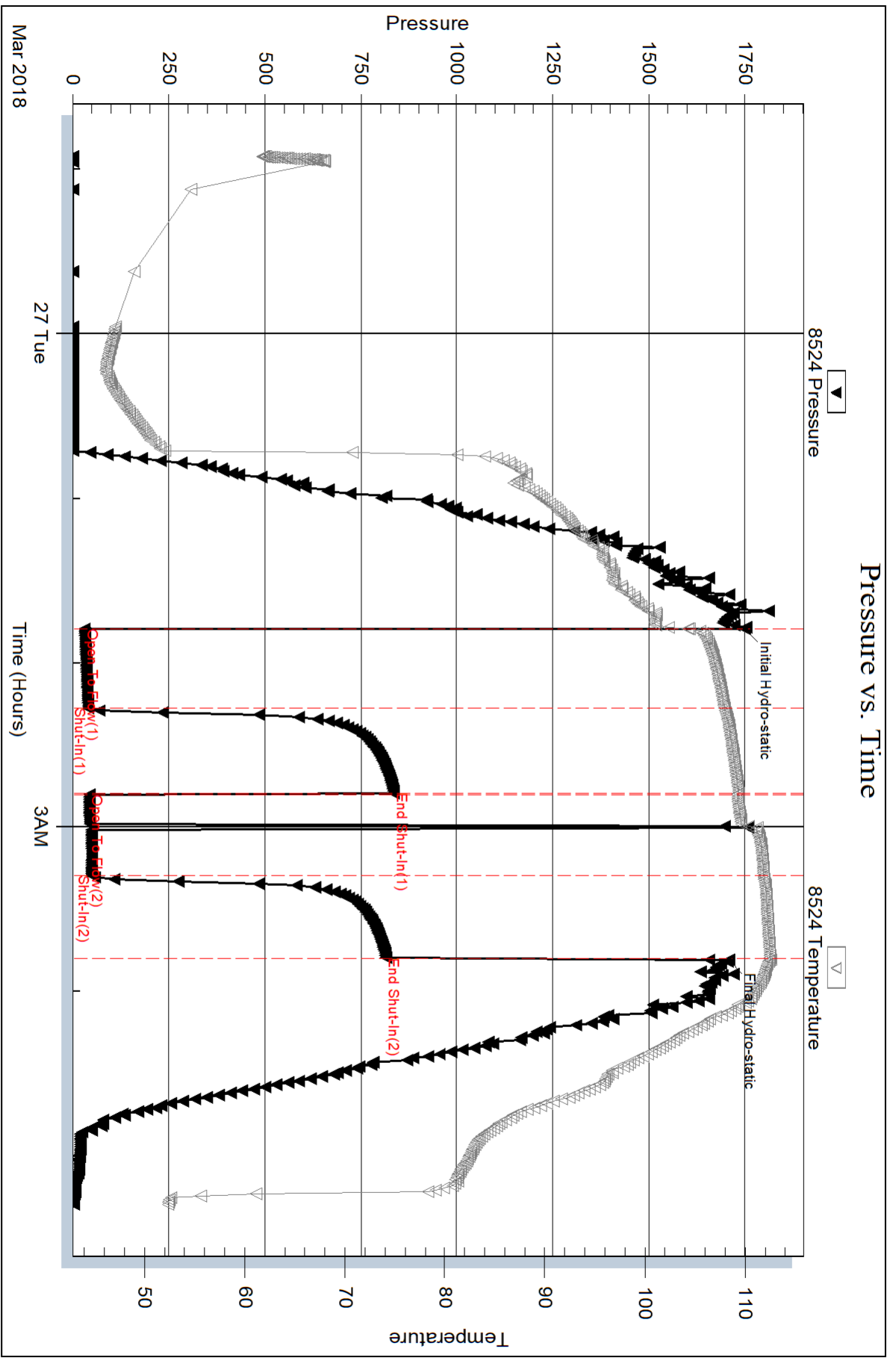
Num Gas Bombs: 0

Serial #:

Laboratory Name:

Laboratory Location:

Recovery Comments:



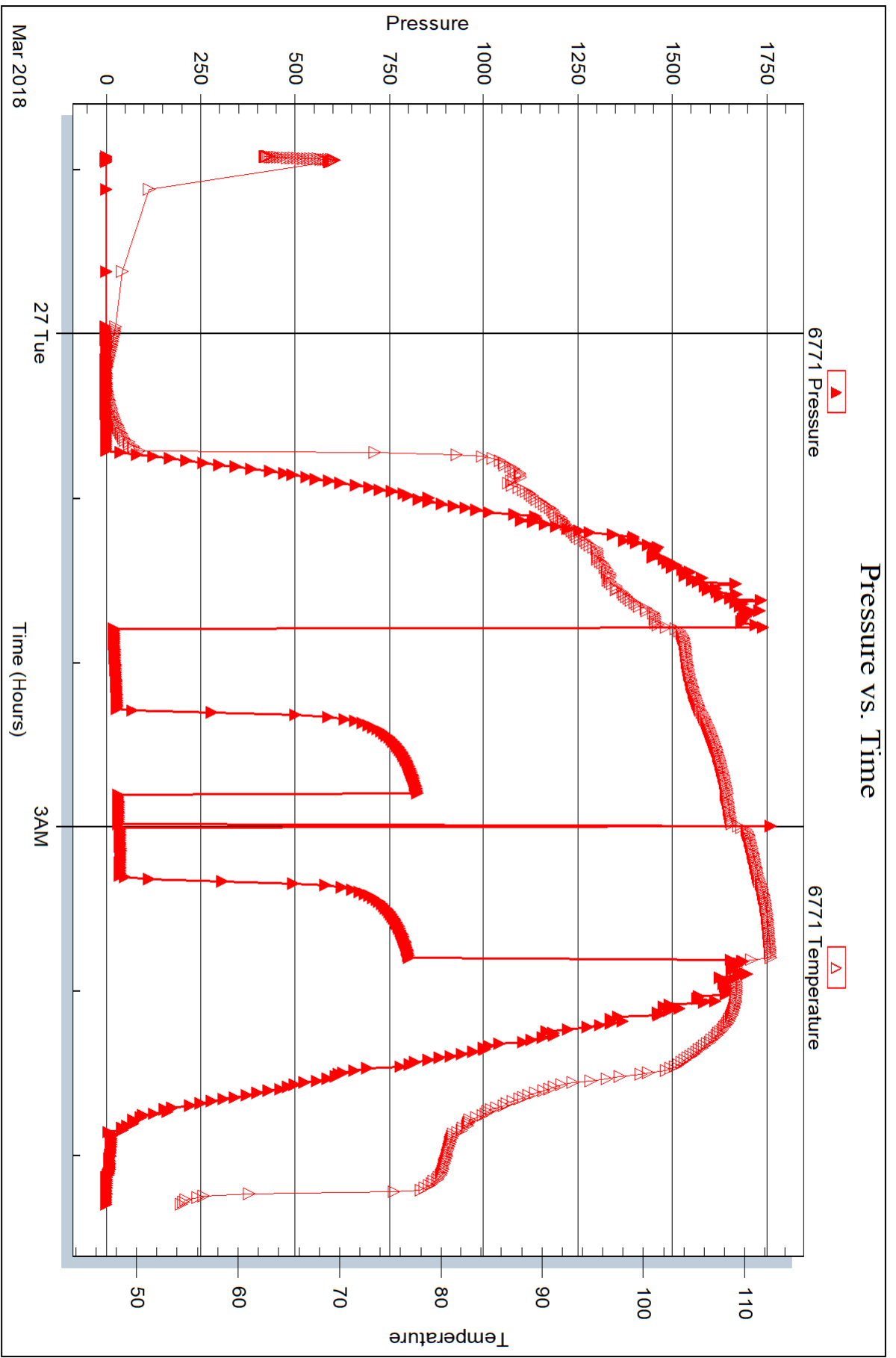
Serial #: 6771

Inside

Dow nting-Nelson Oil Co., Inc.

La-Se-Ba Unit #1-4

DST Test Number: 1





DRILL STEM TEST REPORT

Prepared For: **Downing-Nelson Oil Co., Inc.**

PO Box 1019
Hays, KS 67601

ATTN: Marc Downing

La-Se-Ba Unit #1-4

4-13S-21W Trego, KS

Start Date: 2018.03.28 @ 01:30:53

End Date: 2018.03.28 @ 07:03:29

Job Ticket #: 63418 DST #: 2

Trilobite Testing, Inc
1515 Commerce Parkway Hays, KS 67601
ph: 785-625-4778 fax: 785-625-5620

Printed: 2018.03.29 @ 08:52:53



TRILOBITE TESTING, INC.

DRILL STEM TEST REPORT

Dow ning-Nelson Oil Co., Inc.

4-13S-21W Trego, KS

PO Box 1019
Hays, KS 67601

La-Se-Ba Unit #1-4

Job Ticket: 63418

DST#: 2

ATTN: Marc Dow ning

Test Start: 2018.03.28 @ 01:30:53

GENERAL INFORMATION:

Formation: **Marmaton**

Deviated: No Whipstock: ft (KB)

Time Tool Opened: 03:30:59

Time Test Ended: 07:03:29

Test Type: Conventional Bottom Hole (Reset)

Tester: Brannan Lonsdale

Unit No: 73

Interval: 3835.00 ft (KB) To 3865.00 ft (KB) (TVD)

Reference Elevations: 2222.00 ft (KB)

Total Depth: 3865.00 ft (KB) (TVD)

2214.00 ft (CF)

Hole Diameter: 7.88 inches Hole Condition: Fair

KB to GR/CF: 8.00 ft

Serial #: 8524 Outside

Press@RunDepth: 61.20 psig @ 3836.00 ft (KB)

Capacity: 8000.00 psig

Start Date: 2018.03.28

End Date:

2018.03.28

Last Calib.:

2018.03.28

Start Time: 01:30:54

End Time:

07:03:29

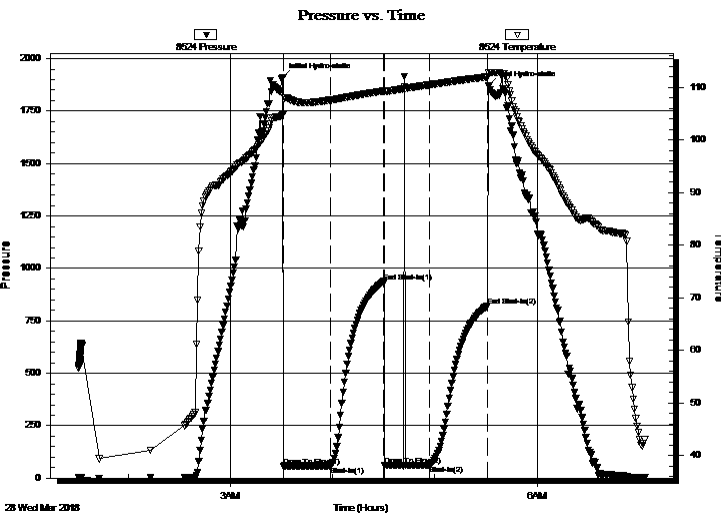
Time On Btm:

2018.03.28 @ 03:30:44

Time Off Btm:

2018.03.28 @ 05:31:44

TEST COMMENT: 30- IF- Weal surface blow
30- IS- No blow
30- FF- No blow . Flushed tool. No blow
30- FS- No blow



PRESSURE SUMMARY

Time (Min.)	Pressure (psig)	Temp (deg F)	Annotation
0	1908.53	104.90	Initial Hydro-static
1	56.35	104.83	Open To Flow (1)
28	58.88	107.59	Shut-In(1)
60	937.04	109.35	End Shut-In(1)
60	59.72	109.17	Open To Flow (2)
86	61.20	110.50	Shut-In(2)
120	821.19	112.02	End Shut-In(2)
121	1868.98	112.85	Final Hydro-static

Recovery

Length (ft)	Description	Volume (bbl)
50.00	M	0.41

* Recovery from multiple tests

Gas Rates

Choke (inches)	Pressure (psig)	Gas Rate (Mcf/d)



**TRILOBITE
TESTING, INC.**

DRILL STEM TEST REPORT

TOOL DIAGRAM

Dow ning-Nelson Oil Co., Inc.

4-13S-21W Trego, KS

PO Box 1019
Hays, KS 67601

La-Se-Ba Unit #1-4

Job Ticket: 63418

DST#: 2

ATTN: Marc Dow ning

Test Start: 2018.03.28 @ 01:30:53

Tool Information

Drill Pipe:	Length: 3805.00 ft	Diameter: 3.82 inches	Volume: 53.94 bbl	Tool Weight: 2000.00 lb
Heavy Wt. Pipe:	Length: ft	Diameter: inches	Volume: - bbl	Weight set on Packer: 25000.00 lb
Drill Collar:	Length: 32.00 ft	Diameter: 2.25 inches	Volume: 0.16 bbl	Weight to Pull Loose: 66000.00 lb
			<u>Total Volume: - bbl</u>	Tool Chased 5.00 ft
Drill Pipe Above KB:	22.00 ft			String Weight: Initial 60000.00 lb
Depth to Top Packer:	3835.00 ft			Final 60000.00 lb
Depth to Bottom Packer:	ft			
Interval betw een Packers:	30.00 ft			
Tool Length:	50.00 ft			
Number of Packers:	2	Diameter: 6.75 inches		

Tool Comments:

Tool Description

Tool Description	Length (ft)	Serial No.	Position	Depth (ft)	Accum. Lengths
Change Over Sub	1.00			3816.00	
Shut In Tool	5.00			3821.00	
Hydraulic tool	5.00			3826.00	
Packer	5.00			3831.00	20.00 Bottom Of Top Packer
Packer	4.00			3835.00	
Stubb	1.00			3836.00	
Recorder	0.00	6771	Inside	3836.00	
Recorder	0.00	8524	Outside	3836.00	
Perforations	26.00			3862.00	
Bullnose	3.00			3865.00	30.00 Bottom Packers & Anchor
Total Tool Length:	50.00				



**TRILOBITE
TESTING, INC.**

DRILL STEM TEST REPORT

FLUID SUMMARY

Dow ning-Nelson Oil Co., Inc.

4-13S-21W Trego, KS

PO Box 1019
Hays, KS 67601

La-Se-Ba Unit #1-4

Job Ticket: 63418

DST#: 2

ATTN: Marc Dow ning

Test Start: 2018.03.28 @ 01:30:53

Mud and Cushion Information

Mud Type: Gel Chem

Cushion Type:

Oil API:

deg API

Mud Weight: 9.00 lb/gal

Cushion Length: ft

Water Salinity: ppm

Viscosity: 50.00 sec/qt

Cushion Volume: bbl

Water Loss: 7.99 in³

Gas Cushion Type:

Resistivity: ohm.m

Gas Cushion Pressure: psig

Salinity: 3000.00 ppm

Filter Cake: inches

Recovery Information

Recovery Table

Length ft	Description	Volume bbl
50.00	M	0.413

Total Length: 50.00 ft Total Volume: 0.413 bbl

Num Fluid Samples: 0

Num Gas Bombs: 0

Serial #:

Laboratory Name:

Laboratory Location:

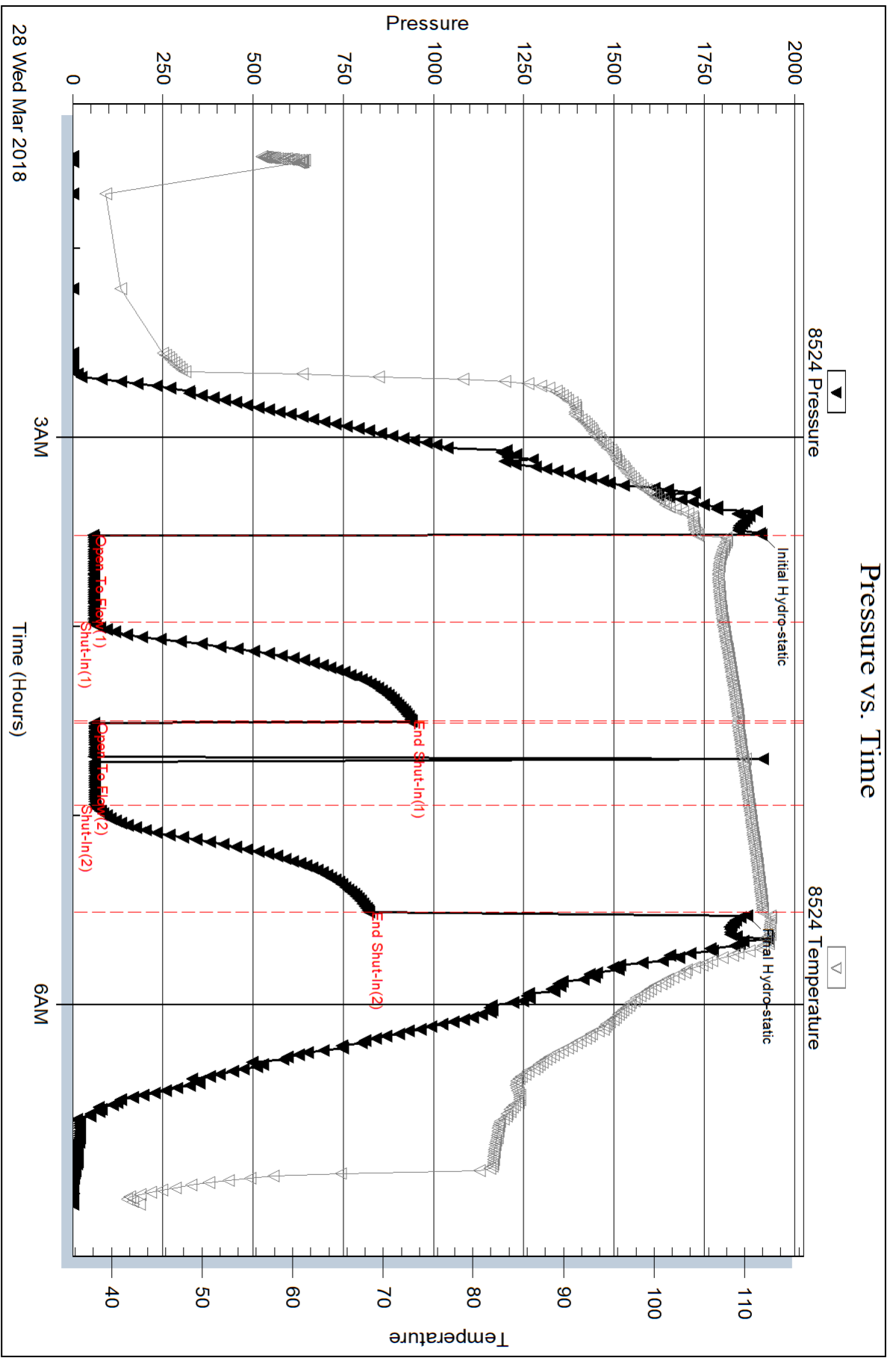
Recovery Comments:

Serial #: 8524

Outside Dow nting-Nelson Oil Co., Inc.

La-Se-Ba Unit #1-4

DST Test Number: 2



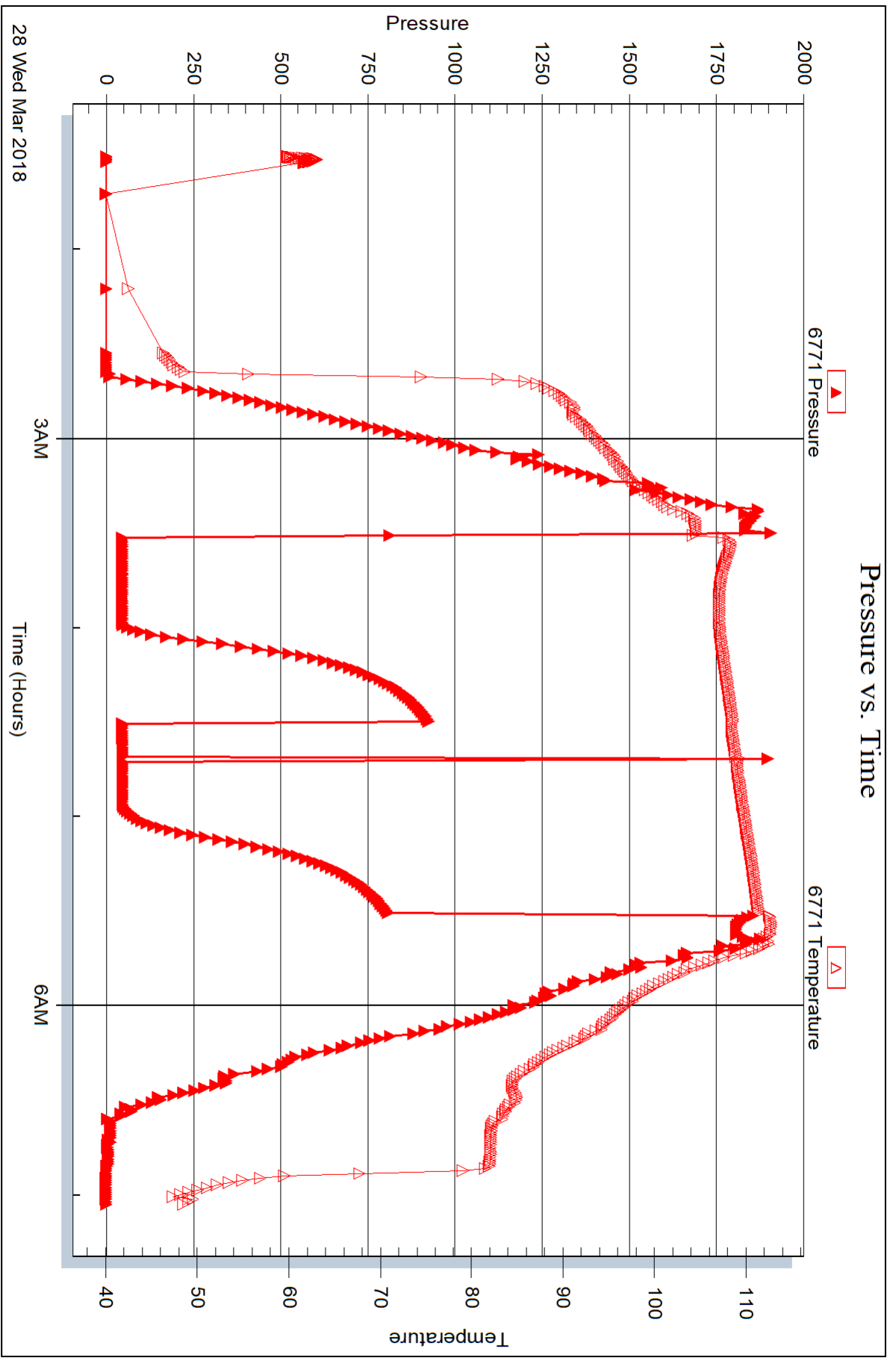
Serial #: 6771

Inside

Dow nting-Nelson Oil Co., Inc.

La-Se-Ba Unit #1-4

DST Test Number: 2



Trilobite Testing, Inc

Ref. No: 63418

Printed: 2018.03.29 @ 08:52:54



DRILL STEM TEST REPORT

Prepared For: **Downing-Nelson Oil Co., Inc.**

PO Box 1019
Hays, KS 67601

ATTN: Marc Downing

La-Se-Ba Unit #1-4

4-13S-21W Trego, KS

Start Date: 2018.03.28 @ 13:50:09

End Date: 2018.03.28 @ 20:04:30

Job Ticket #: 63419 DST #: 3

Trilobite Testing, Inc
1515 Commerce Parkway Hays, KS 67601
ph: 785-625-4778 fax: 785-625-5620

Printed: 2018.03.29 @ 08:51:42



**TRILOBITE
TESTING, INC.**

DRILL STEM TEST REPORT

Dow ning-Nelson Oil Co., Inc.

4-13S-21W Trego, KS

PO Box 1019
Hays, KS 67601

La-Se-Ba Unit #1-4

ATTN: Marc Dow ning

Job Ticket: 63419

DST#: 3

Test Start: 2018.03.28 @ 13:50:09

GENERAL INFORMATION:

Formation: **Arbuckle**

Deviated: No Whipstock: ft (KB)

Time Tool Opened: 15:39:00

Time Test Ended: 20:04:30

Test Type: Conventional Bottom Hole (Reset)

Tester: Brannan Lonsdale

Unit No: 73

Interval: 3860.00 ft (KB) To 3896.00 ft (KB) (TVD)

Reference Elevations: 2222.00 ft (KB)

Total Depth: 3896.00 ft (KB) (TVD)

2214.00 ft (CF)

Hole Diameter: 7.88 inches Hole Condition: Fair

KB to GR/CF: 8.00 ft

Serial #: 8524 Outside

Press@RunDepth: 112.90 psig @ 3861.00 ft (KB)

Capacity: 8000.00 psig

Start Date: 2018.03.28 End Date: 2018.03.28

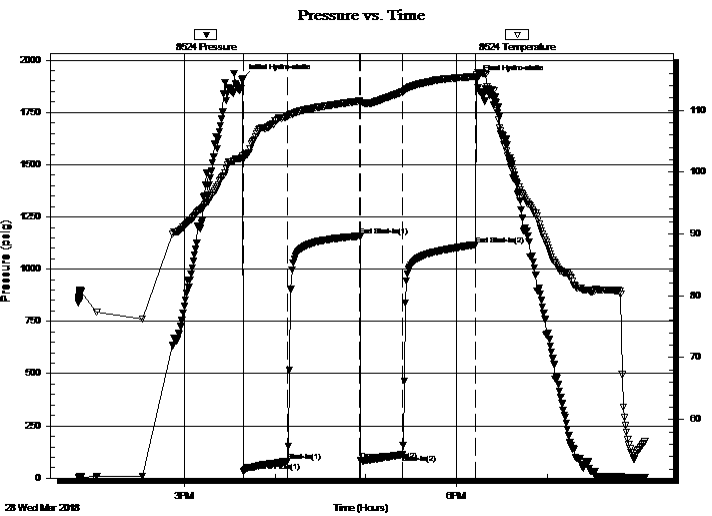
Last Calib.: 2018.03.28

Start Time: 13:50:10 End Time: 20:04:30

Time On Btm: 2018.03.28 @ 15:38:45

Time Off Btm: 2018.03.28 @ 18:13:30

TEST COMMENT: 30- IF- BOB 18mins(17.5")
45- IS- No blow
30- FF- BOB 17mins(18.25")
45- FSI- .5" blow



PRESSURE SUMMARY

Time (Min.)	Pressure (psig)	Temp (deg F)	Annotation
0	1912.92	102.61	Initial Hydro-static
1	33.23	102.08	Open To Flow (1)
30	81.98	109.03	Shut-In(1)
78	1158.29	111.46	End Shut-In(1)
78	84.03	111.23	Open To Flow (2)
106	112.90	112.95	Shut-In(2)
154	1116.42	115.45	End Shut-In(2)
155	1905.73	115.78	Final Hydro-static

Recovery

Length (ft)	Description	Volume (bbl)
190.00	SGMCO, 5%G 35%M 60%O	2.40
32.00	CGO, 20%G 80%O	0.45
0.00	95' GIP	0.00

* Recovery from multiple tests

Gas Rates

	Choke (inches)	Pressure (psig)	Gas Rate (Mcf/d)



**TRILOBITE
TESTING, INC.**

DRILL STEM TEST REPORT

TOOL DIAGRAM

Dow ning-Nelson Oil Co., Inc.

4-13S-21W Trego, KS

PO Box 1019
Hays, KS 67601

La-Se-Ba Unit #1-4

Job Ticket: 63419

DST#: 3

ATTN: Marc Dow ning

Test Start: 2018.03.28 @ 13:50:09

Tool Information

Drill Pipe:	Length: 3836.00 ft	Diameter: 3.82 inches	Volume: 54.38 bbl	Tool Weight: 2000.00 lb
Heavy Wt. Pipe:	Length: ft	Diameter: inches	Volume: - bbl	Weight set on Packer: 25000.00 lb
Drill Collar:	Length: 32.00 ft	Diameter: 2.25 inches	Volume: 0.16 bbl	Weight to Pull Loose: 62000.00 lb
			<u>Total Volume: - bbl</u>	Tool Chased 0.00 ft
Drill Pipe Above KB:	28.00 ft			String Weight: Initial 60000.00 lb
Depth to Top Packer:	3860.00 ft			Final 61000.00 lb
Depth to Bottom Packer:	ft			
Interval betw een Packers:	36.00 ft			
Tool Length:	56.00 ft			
Number of Packers:	2	Diameter: 6.75 inches		

Tool Comments:

Tool Description

Tool Description	Length (ft)	Serial No.	Position	Depth (ft)	Accum. Lengths
Change Over Sub	1.00			3841.00	
Shut In Tool	5.00			3846.00	
Hydraulic tool	5.00			3851.00	
Packer	5.00			3856.00	20.00 Bottom Of Top Packer
Packer	4.00			3860.00	
Stubb	1.00			3861.00	
Recorder	0.00	6771	Inside	3861.00	
Recorder	0.00	8524	Outside	3861.00	
Perforations	32.00			3893.00	
Bullnose	3.00			3896.00	36.00 Bottom Packers & Anchor
Total Tool Length:	56.00				



**TRILOBITE
TESTING, INC.**

DRILL STEM TEST REPORT

FLUID SUMMARY

Dow ning-Nelson Oil Co., Inc.

4-13S-21W Trego, KS

PO Box 1019
Hays, KS 67601

La-Se-Ba Unit #1-4

Job Ticket: 63419

DST#: 3

ATTN: Marc Dow ning

Test Start: 2018.03.28 @ 13:50:09

Mud and Cushion Information

Mud Type: Gel Chem

Cushion Type:

Oil API:

36 deg API

Mud Weight: 9.00 lb/gal

Cushion Length:

ft

Water Salinity:

ppm

Viscosity: 53.00 sec/qt

Cushion Volume:

bbbl

Water Loss: 7.99 in³

Gas Cushion Type:

Resistivity: ohm.m

Gas Cushion Pressure:

psig

Salinity: 3000.00 ppm

Filter Cake: inches

Recovery Information

Recovery Table

Length ft	Description	Volume bbbl
190.00	SGMCO, 5%G 35%M 60%O	2.397
32.00	CGO, 20%G 80%O	0.454
0.00	95' GIP	0.000

Total Length: 222.00 ft

Total Volume: 2.851 bbl

Num Fluid Samples: 0

Num Gas Bombs: 0

Serial #:

Laboratory Name:

Laboratory Location:

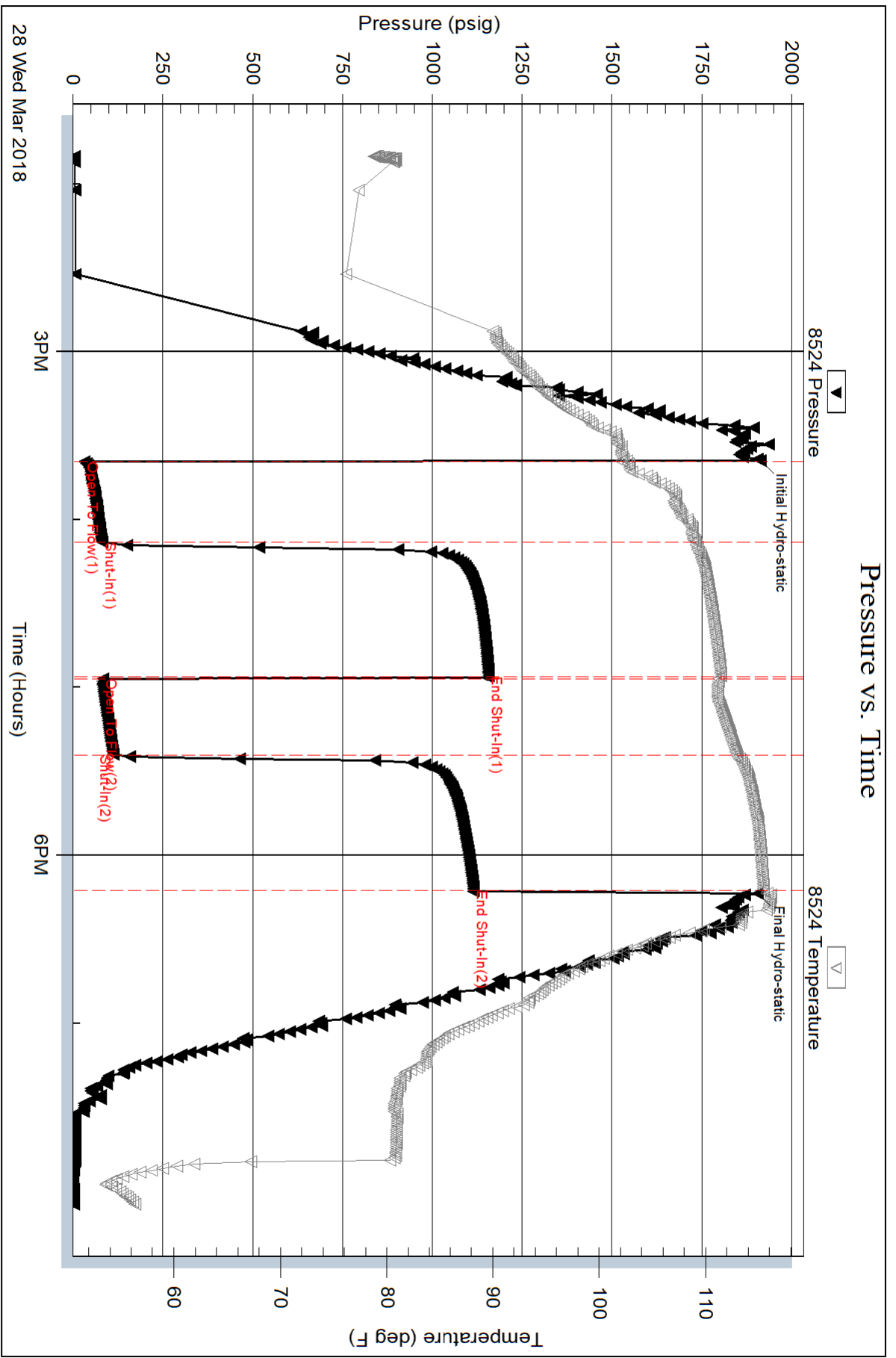
Recovery Comments:

Serial #: 8524

Outside Dow nting-Nelson Oil Co., Inc.

La-Se-Ba Unit #1-4

DST Test Number: 3



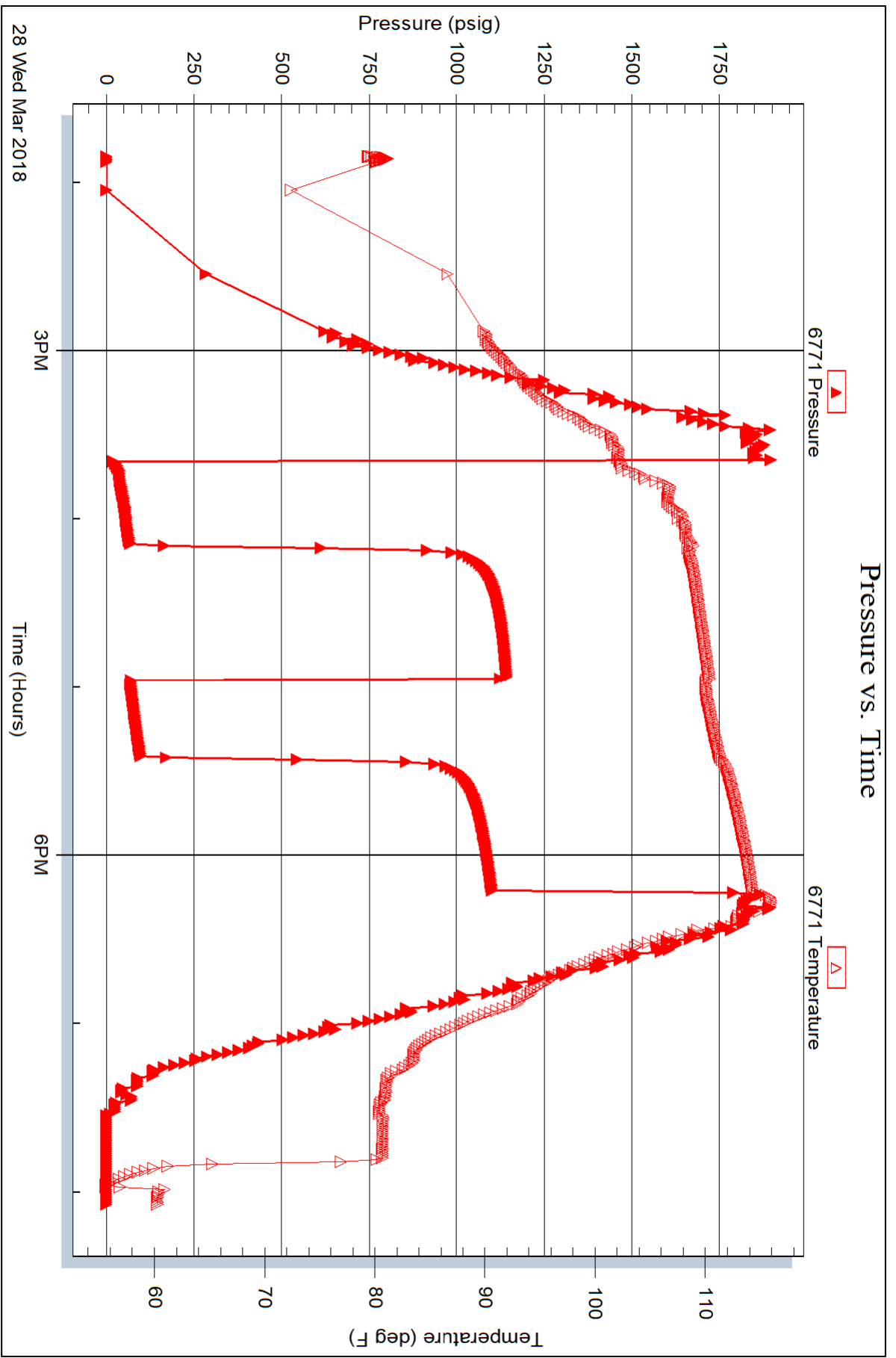
Serial #: 6771

Inside

Dow nting-Nelson Oil Co., Inc.

La-Se-Ba Unit #1-4

DST Test Number: 3



Triobite Testing, Inc

Ref. No: 63419

Printed: 2018.03.29 @ 08:51:43



TRILOBITE TESTING INC.

1515 Commerce Parkway • Hays, Kansas 67601

Test Ticket

NO. 63417

Well Name & No. La-Se-Ba Unit #1-4 Test No. 1 Date 3/26/18
 Company Dawning-Nelson Oil Co, Inc. Elevation 2222 KB 2214 GL
 Address PO Box 1019 Hays, KS 67601
 Co. Rep / Geo. Marc Dawning Rig Discovery #4
 Location: Sec. 4 Twp 13 S Rge. 21 W Co. Trego State KS

Interval Tested 3586-3600 Zone Tested LKC "E"
 Anchor Length 14' Drill Pipe Run 3550 Mud Wt. 8.7
 Top Packer Depth 3581 Drill Collars Run 32 Vis 60
 Bottom Packer Depth 3586 Wt. Pipe Run --- WL 7.6
 Total Depth 3600 Chlorides 2000 ppm System LCM 2#

Blow Description IF - Weak blow 1/2"
ISJ - No blow
PF - Weak surface blow. Flushed tool. Weak surface blow died 2mins
FST - No blow

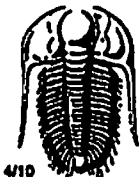
Rec	Feet of	%gas	%oil	%water	%mud
<u>40</u>	<u>M</u>				
Rec	Feet of	%gas	%oil	%water	%mud
Rec	Feet of	%gas	%oil	%water	%mud
Rec	Feet of	%gas	%oil	%water	%mud
Rec	Feet of	%gas	%oil	%water	%mud

Rec Total 40' BHT 113° Gravity --- API RW --- @ --- ° F Chlorides --- ppm
 (A) Initial Hydrostatic 1749 Test 1050 T-On Location 2220
 (B) First Initial Flow 31 Jars --- T-Started 2255
 (C) First Final Flow 40 Safety Joint --- T-Open 3/27 0147
 (D) Initial Shut-In 835 Circ Sub --- T-Pulled 0347
 (E) Second Initial Flow 43 Hourly Standby --- T-Out 0517
 (F) Second Final Flow 49 Mileage 54 RT 54 Comments ---
 (G) Final Shut-In 815 Sampler ---
 (H) Final Hydrostatic 1708 Straddle ---
 Ruined Shale Packer ---
 Ruined Packer ---

Initial Open 30 Extra Packer --- Extra Copies ---
 Initial Shut-In 30 Extra Recorder ---
 Final Flow 30 Day Standby ---
 Final Shut-In 30 Accessibility ---
 Sub Total 1104 Total 1104 MP/DST Disc't ---

Approved By _____ Our Representative Brian Lonsdale

TriLOBITE TESTING INC. shall not be liable for damaged of any kind of the property or personnel of the one for whom a test is made, or for any loss suffered or sustained, directly or indirectly, through the use of its equipment, or its statements or opinion concerning the results of any test, tools lost or damaged in the hole shall be paid for at cost by the party for whom the test is made.



TRIOBITE TESTING INC.

1515 Commerce Parkway • Hays, Kansas 67601

Test Ticket

NO. 63418

Well Name & No. La-Se-Ba Unit #1-4 Test No. 2 Date 3/28/18
 Company Downing-Nelson Oil Co, Inc. Elevation 2222 KB 2214 GL
 Address PO Box 1019 Hays, KS 67601
 Co. Rep / Geo. Marc Downing Rig Discovery #4
 Location: Sec. 4 Twp 13 S Rge. 21 W Co. Trego State KS

Interval Tested 3835-3865 Zone Tested Marmaton
 Anchor Length 30' Drill Pipe Run 3805 Mud Wt. 9.0
 Top Packer Depth 3830 Drill Collars Run 32 Vis 50
 Bottom Packer Depth 3835 Wt. Pipe Run — WL 8.0
 Total Depth 3865 Chlorides 300 ppm System LCM 1 1/2"

Blow Description IF-Weak surface blow
ISF-No blow
FF-No blow, Flushed tool No blow
FST-No blow

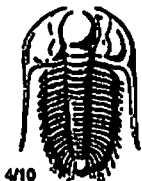
Rec	Feet of	%gas	%oil	%water	%mud
<u>50</u>	<u>M</u>				
Rec	Feet of	%gas	%oil	%water	%mud
Rec	Feet of	%gas	%oil	%water	%mud
Rec	Feet of	%gas	%oil	%water	%mud
Rec	Feet of	%gas	%oil	%water	%mud

Rec Total 50' BHT 112° Gravity — API RW — @ — F Chlorides — ppm
 (A) Initial Hydrostatic 1909 Test 1050 T-On Location 0120
 (B) First Initial Flow 56 Jars — T-Started 0130
 (C) First Final Flow 59 Safety Joint — T-Open 0329
 (D) Initial Shut-In 937 Circ Sub — T-Pulled 0529
 (E) Second Initial Flow 60 Hourly Standby — T-Out 0703
 (F) Second Final Flow 61 Mileage 54 BT 54 Comments —
 (G) Final Shut-In 821 Sampler —
 (H) Final Hydrostatic 1869 Straddle — Ruined Shale Packer —
 Shale Packer — Ruined Packer —
 Extra Packer — Extra Copies —
 Extra Recorder —

Initial Open 30
 Initial Shut-In 30
 Final Flow 30
 Final Shut-In 30
 Sub Total 1104
 Total 1104
 MP/DST Disc't —

Approved By — Our Representative Brian Lonsdale

Triobite Testing Inc. shall not be liable for damaged of any kind of the property or personnel of the one for whom a test is made, or for any loss suffered or sustained, directly or indirectly, through the use of its equipment, or its statements or opinion concerning the results of any test, tools lost or damaged in the hole shall be paid for at cost by the party for whom the test is made.



TRILOBITE TESTING INC.

1515 Commerce Parkway • Hays, Kansas 67601

Test Ticket

NO. 63419

Well Name & No. La-Se-Ba Unit #14 Test No. 3 Date 3/28/18
 Company Downing-Nelson Oil Co, Inc. Elevation 2222 KB 9214 GL
 Address PO Box 1019 Hays, KS 67601
 Co. Rep / Geo. Marc Downing Rig Discovery #4
 Location: Sec. 4 Twp 13 S Rge. 21 W Co. Trego State KS

Interval Tested 3860 - 3896 Zone Tested Arbuckle
 Anchor Length 36' Drill Pipe Run 3836 Mud Wt. 8.9
 Top Packer Depth 3855 Drill Collars Run 32 Vis 53
 Bottom Packer Depth 3860 Wt. Pipe Run _____ WL 8.0
 Total Depth 3896 Chlorides 3,080 ppm System LCM 1 1/2"[#]

Blow Description IF-BOB 18mins (17.5")
FST- No blow
FF-BOB 17mins (18.25")
FST- 1/2" blow

Rec	Feet of	%gas	%oil	%water	%mud
<u>190</u>	<u>SGMCO</u>	<u>5</u>	<u>60</u>	<u>35</u>	
<u>32</u>	<u>CGO</u>	<u>20</u>	<u>80</u>		
	<u>95' ATP</u>				

Rec Total 222' BHT 115° Gravity 36 API RW _____ @ _____ °F Chlorides _____ ppm
 (A) Initial Hydrostatic 1913 Test 1050 T-On Location 1339
 (B) First Initial Flow 33 Jars _____ T-Started 1350
 (C) First Final Flow 82 Safety Joint _____ T-Open 1536
 (D) Initial Shut-In 1152 Circ Sub _____ T-Pulled 1808
 (E) Second Initial Flow 84 Hourly Standby _____ T-Out 2004
 (F) Second Final Flow 113 Mileage 54RT 54 Comments _____
 (G) Final Shut-In 1116 Sampler _____
 (H) Final Hydrostatic 1906 Straddle _____ Ruined Shale Packer _____
 Shale Packer _____ Ruined Packer _____
 Extra Packer _____ Extra Copies _____
 Initial Open 30 Extra Recorder _____ Sub Total 0
 Initial Shut-In 45 Day Standby _____ Total 1104
 Final Flow 30 Accessibility _____ MP/DST Disc't _____
 Final Shut-In 45 Sub Total 1104

Approved By _____ Our Representative Brannon Lonsdale

TriLOBITE TESTING INC. shall not be liable for damaged of any kind of the property or personnel of the one for whom a test is made, or for any loss suffered or sustained, directly or indirectly, through the use of its equipment, or its statements or opinion concerning the results of any test, tools lost or damaged in the hole shall be paid for at cost by the party for whom the test is made.