



SUPERIOR
Hays,
Kansas

DUAL RECEIVER CEMENT BOND LOG

Company VINCENT OIL CORPORATION

Well IMEL #1-5

Field

County FORD

State KANSAS

Location:

2240' FNL & 2310' FWL
N/2 - SE - SE - NW

API #: 15-057-20676-0000

Other Services

PERF

SEC 5 TWP 29S RGE 22W

Elevation

GROUND LEVEL Elevation 2496

Log Measured From KELLY BUSHING 12' A.G.L.

Drilling Measured From KELLY BUSHING

K.B. 2508
D.F. 2506
G.L. 2496

Company
Well IMEL #1-5
Field
County FORD
State KANSAS

Date 5/11/10

Run Number ONE

Depth Driller 5420

Depth Logger 5370

Bottom Logged Interval 5369

Top Log Interval 4050

Open Hole Size 7 7/8

Type Fluid WATER

Density / Viscosity

Max. Recorded Temp. 4160

Estimated Cement Top

Time Well Ready

Time Logger on Bottom

Equipment Number 747

Location HAYS, KANSAS

Recorded By R. SMITH

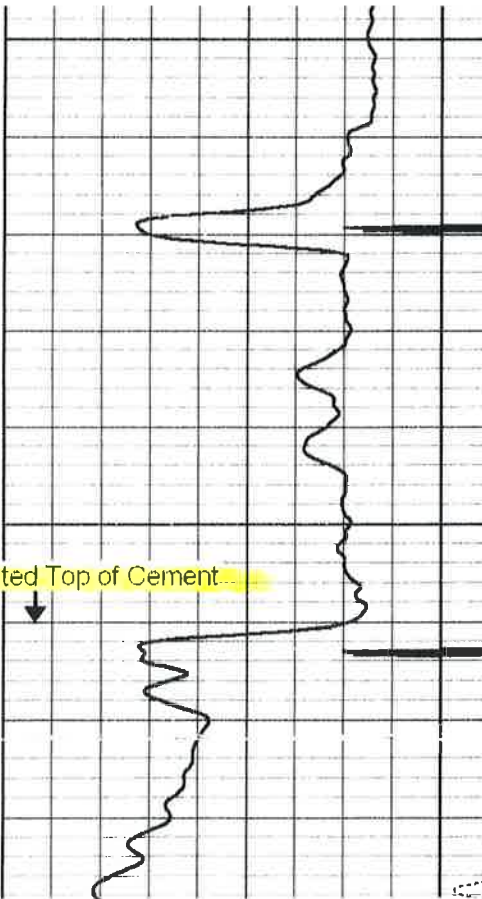
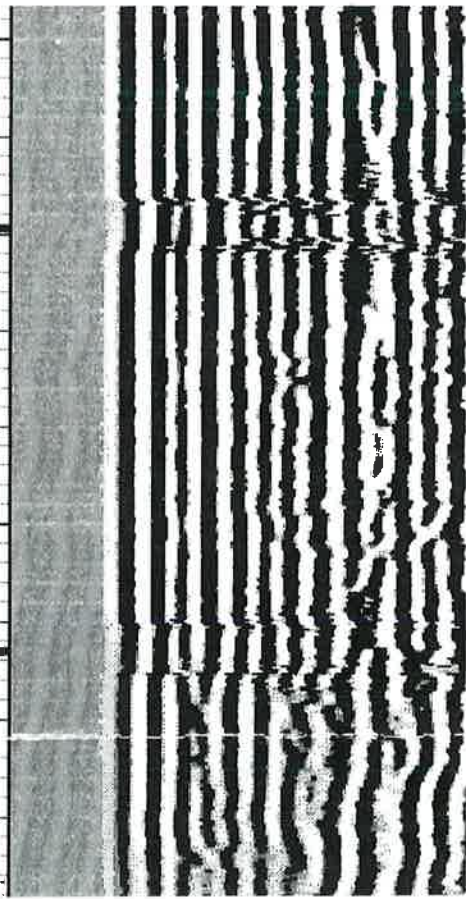
Witnessed By P. MAST

Borehole Record		Tubing Record					
Run Number	Bit	From	To	Size	Weight	From	To

Casing Record		Weld/Ft	
Surface String	Size	Top	Bottom
3 5/8		0	613

Prot. String	
Production String	Size
4 1/2	

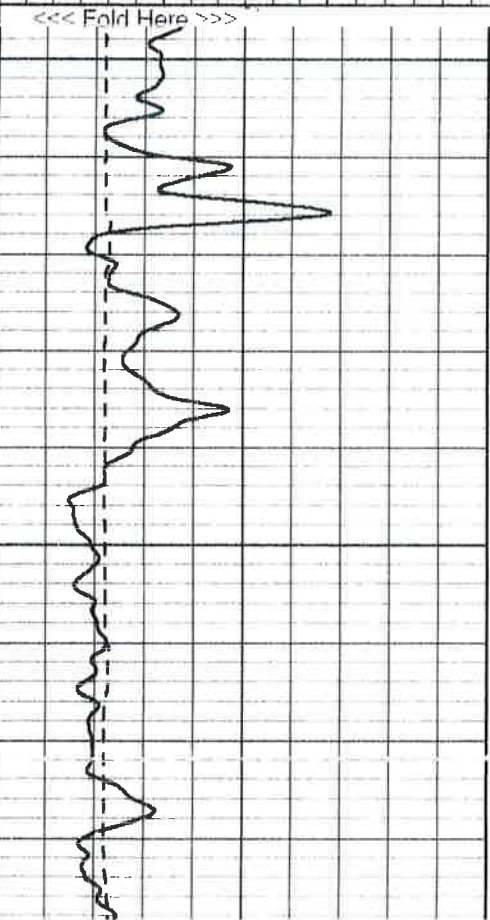
Liner



4100

4150

4160' Estimated Top of Cement



<<< Fold Here >>>