



Fall & Associates
 Stake and Elevation Service
 P.O. Box 222
 Pretty Prairie, KS. 67570
 785-243-7506

Date 5-10-18

Invoice Number 0509181

BEREXCO, LLC

2-17

Ardene

Operator

Number

Farm Name

Cheyenne-KS

17

2s

37w

1980'FNL 1980'FEL

County-State

S

T

R

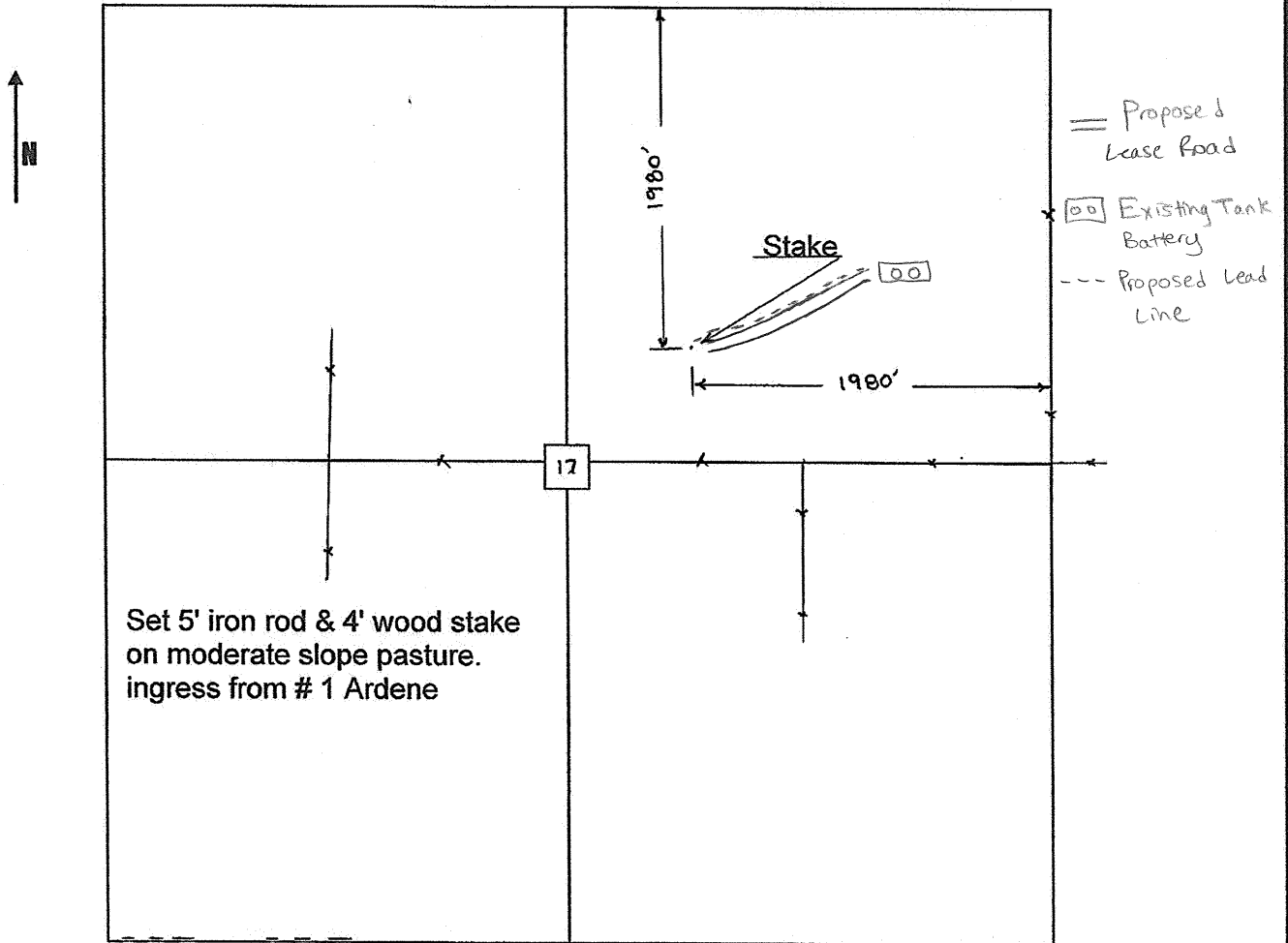
Location

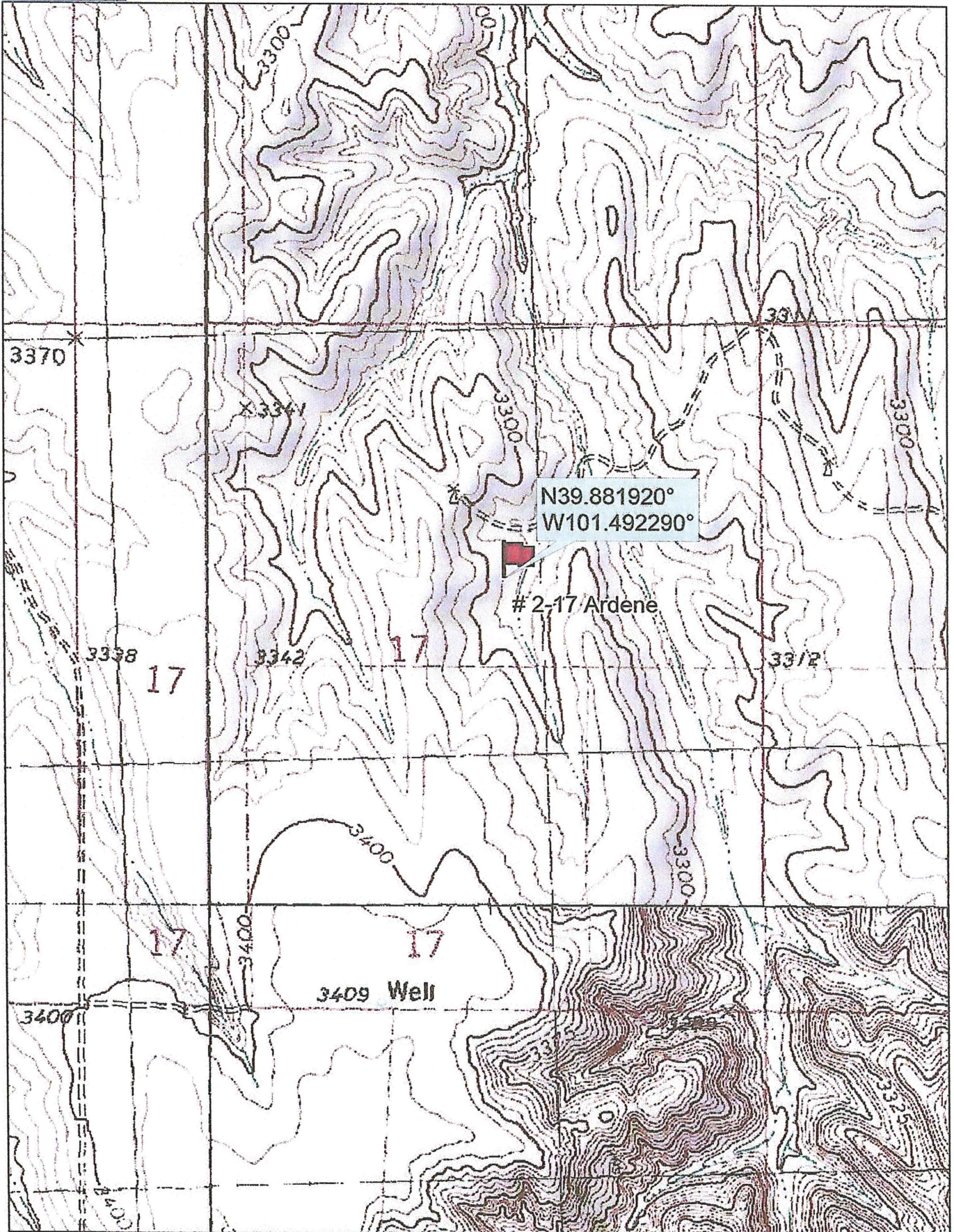
Berexco. LLC
 2020 N. Bramblewood Drive
 Wichita, KS. 67206

Elevation 3284 Gr.

Ordered By: Dana

Scale 1"=1000'





Data use subject to license.

© DeLorme. Topo North America™ 9.

www.delorme.com

