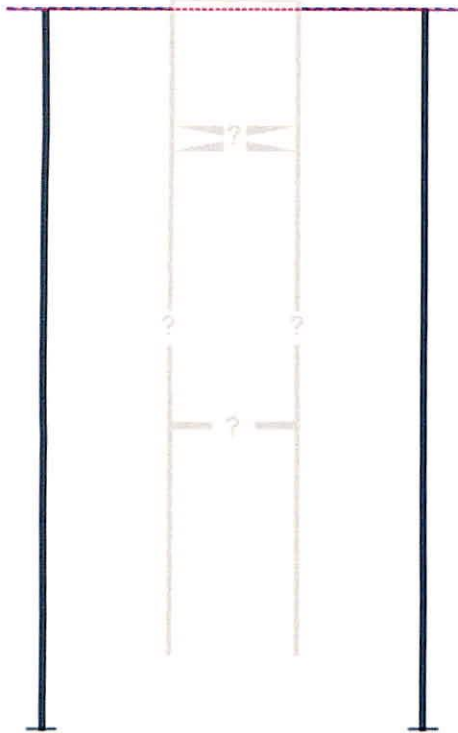


**Producing Shot
Manual Input**



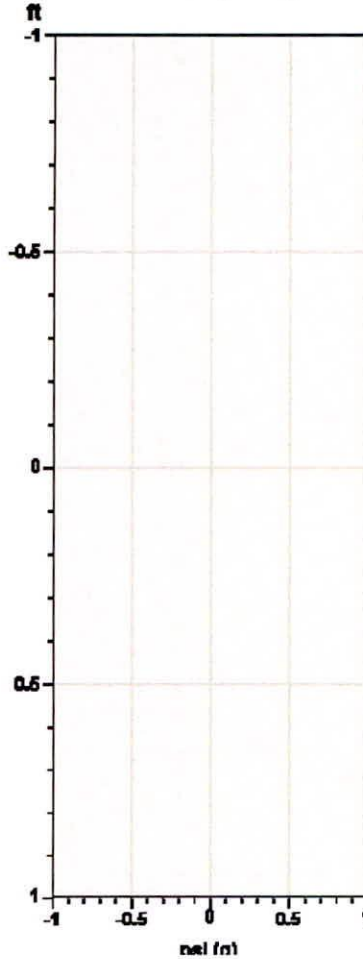
Manually Entered Production

Liquid Level 0 ft
Percent Liquid 100.00%

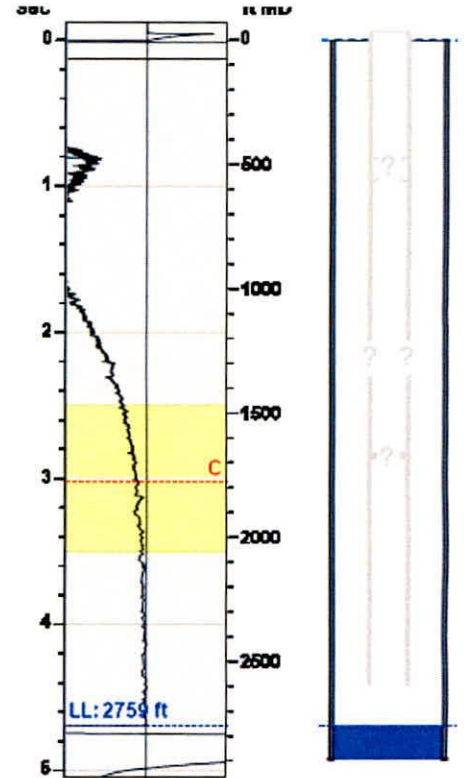
**Static Bottomhole Pressure
*. * psi (g) @ *. * ft TVD**

Static Liquid Level 2759 ft MD
Oil Column Height *. * ft MD
Water Column Height *. * ft MD

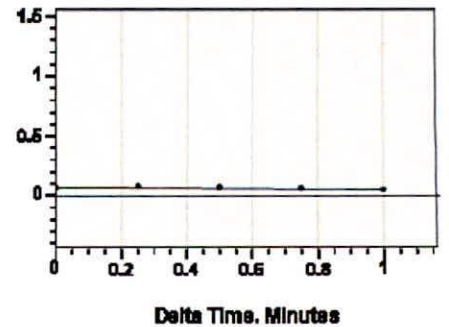
Pressure Profile (TVD)



**Static Shot
03/09/2018 11:32:09AM**



Casing Pressure Buildup



Casing Pressure 0.1 psi (g)
Buildup -0.0 psi (g)
Buildup Time 1 min 0 sec
Gas Gravity

Well Test

Oil *. * BBL/D
Water *. * BBL/D

**Comments and
Recommendations**

Static test taken for TA well

Casing Pressure

Pressure 0.1 psi (g)

Annular Gas Flow

Gas Flow *. * Mscf/D