

Fall & Associates

Stake and Elevation Service

P.O. Box 222

Pretty Prairie, KS. 67570

785-243-7506

Date 5-10-18

Invoice Number 0509182

MURFIN DRILLING

1-27

Kopriva 'A'

Operator

Number

Farm Name

Rawlins-KS

27

2s

35w

2310'FNL 1980'FWL

County-State

S

T

R

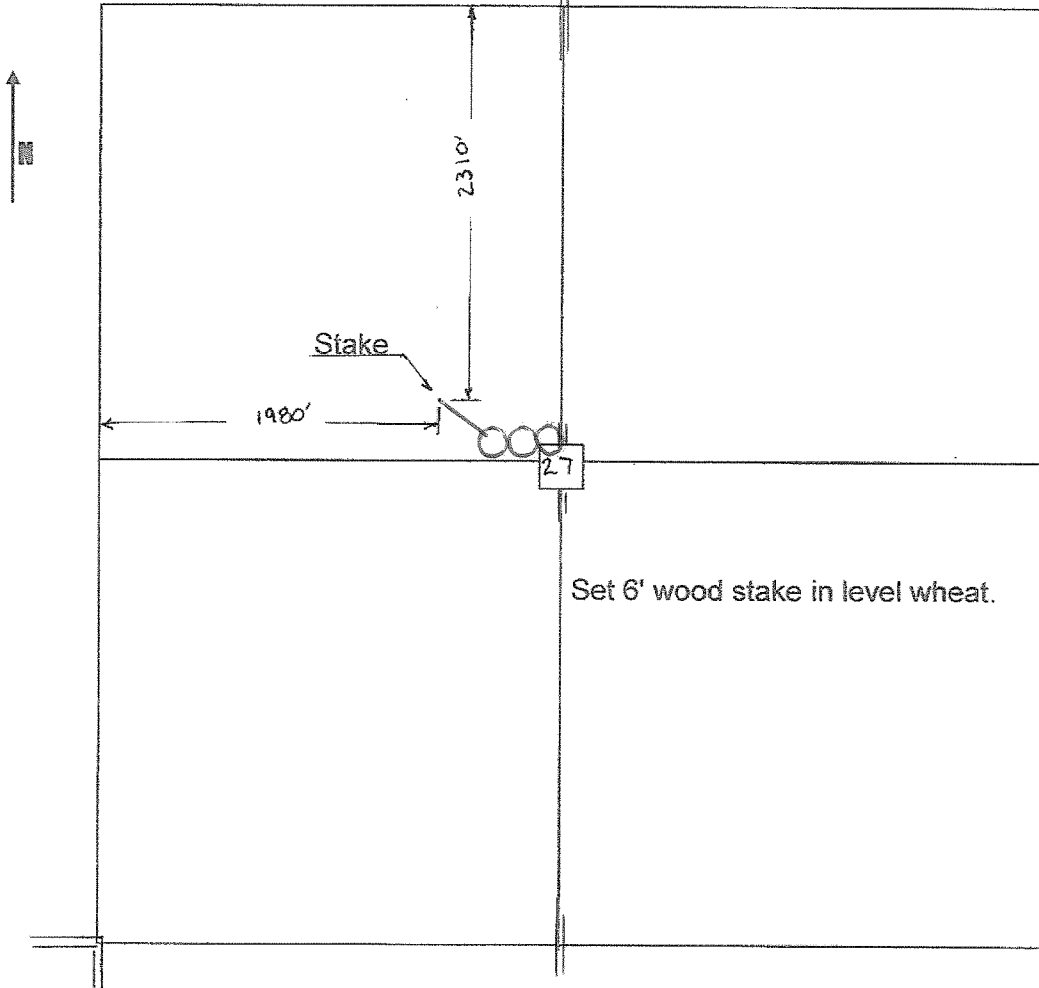
Location

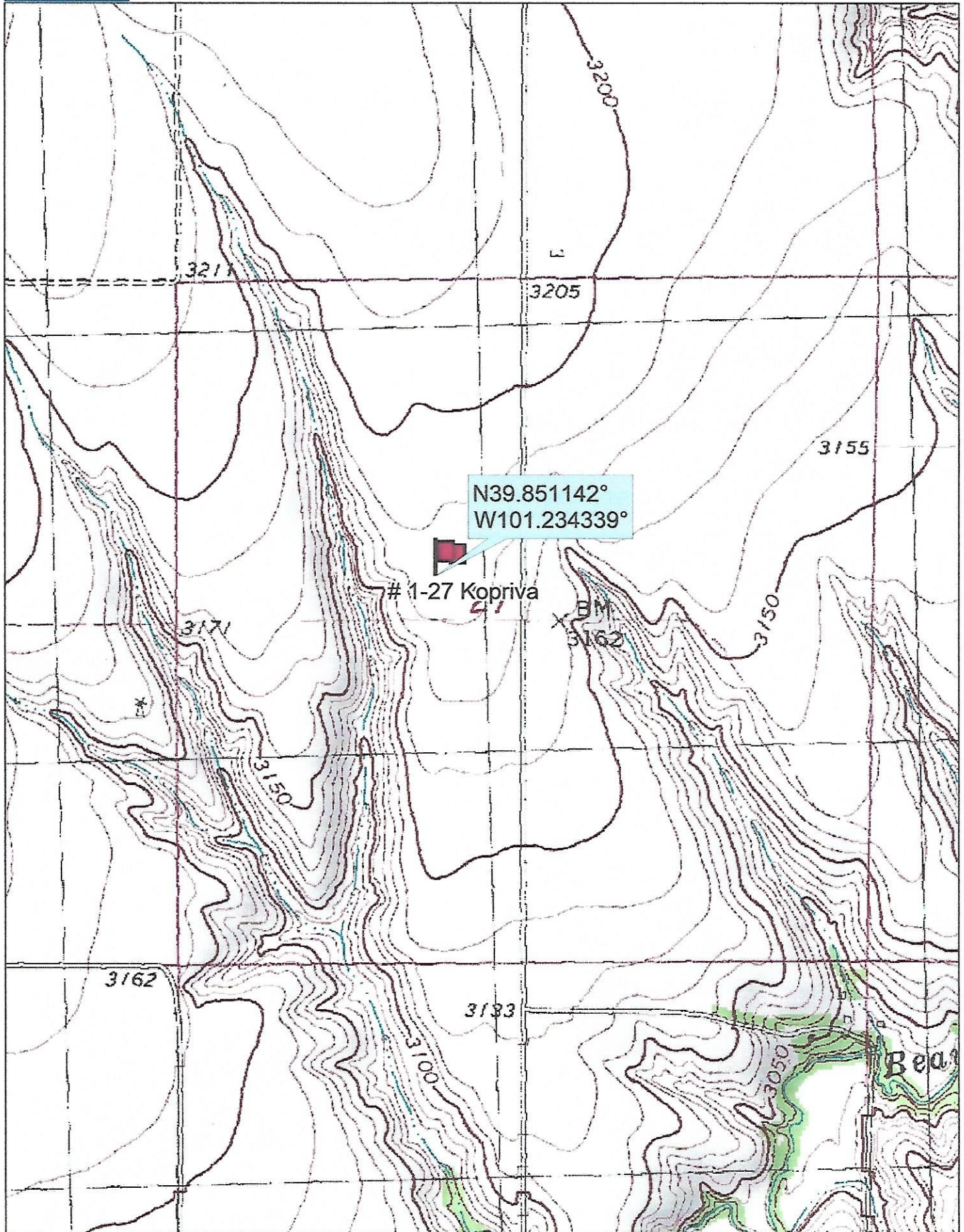
Murfin Drilling
250 N Water
Suite 300
Wichita, KS. 67202

Elevation 3178 Gr.

Ordered By: Shauna

Scale 1"=1000'





N39.851142°
W101.234339°

1-27 Kopriva
41

BM
3162

